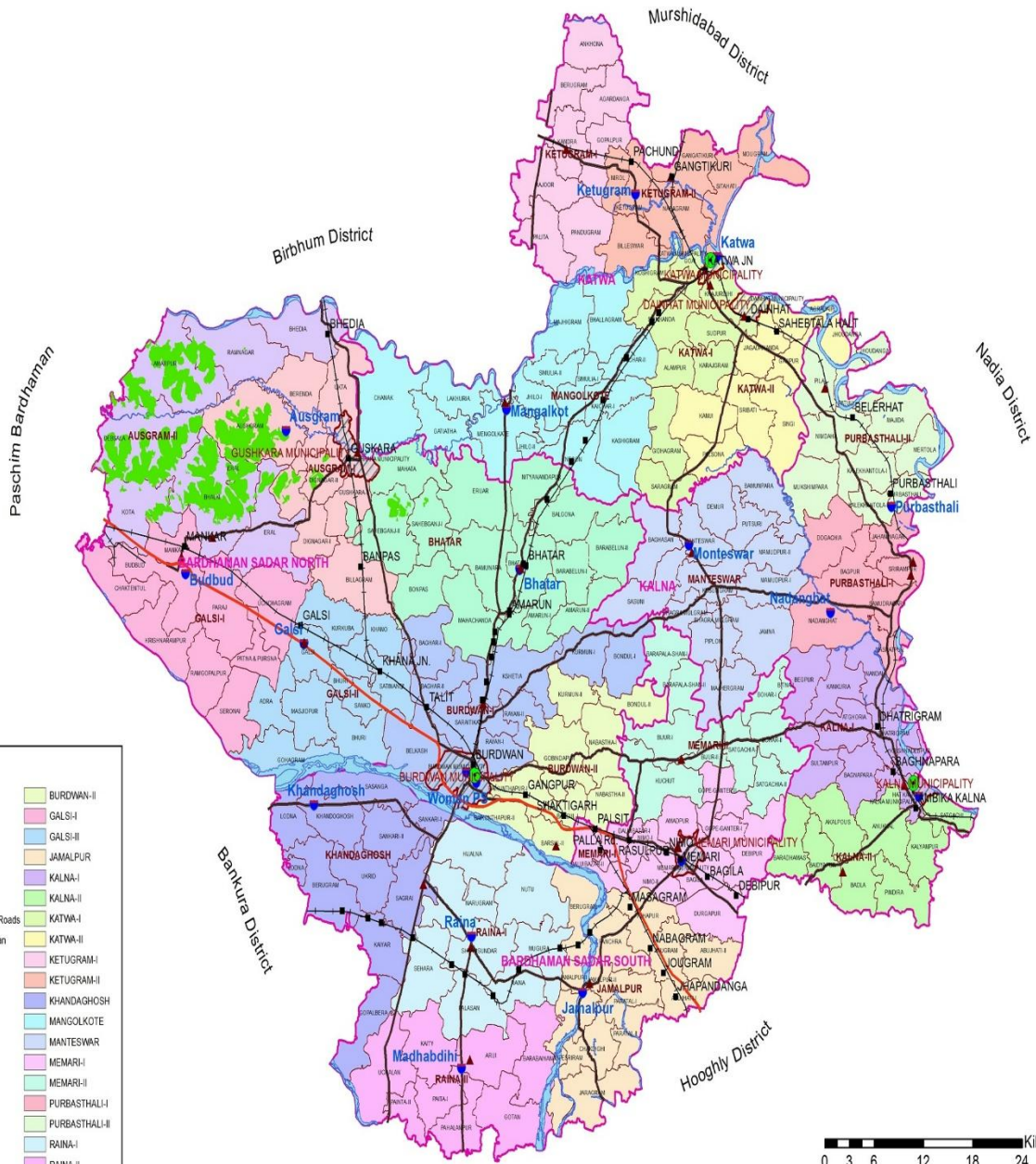


DISTRICT PROFILE

PURBA BARDHAMAN

Administrative Map of Purba Bardhaman District



0 3 6 12 18 24 Kilometers

1. INTRODUCTION

Purba Bardhaman district, carved out of the erstwhile Bardhaman district in 2017, is located in the central part of West Bengal with Bardhaman town as its headquarters. Renowned as the "rice bowl of West Bengal," the district is one of the state's leading producers of paddy and other crops, making agriculture the backbone of its economy. Alongside its strong agrarian base, Purba Bardhaman also has a growing industrial presence, particularly in rice mills, agro-based industries, and small-scale manufacturing units. Several industrial estates and clusters have developed in and around Bardhaman town, catering to sectors like engineering goods, textiles, food processing, and chemicals. The district is well-connected by major highways and rail routes to Kolkata and other parts of the state, which facilitates both agricultural trade and industrial growth. With its fertile lands, evolving industrial base, and rich cultural heritage, Purba Bardhaman plays a vital role in the socio-economic landscape of West Bengal.

2. CLIMATIC CONDITIONS

Purba Bardhaman has a tropical climate with hot summers, heavy monsoon rains, and mild winters. Summers (March–May) are dry and often exceed 40°C, while winters (Nov–Feb) are cool, with lows near 9°C. The district receives around 1,300 mm of rainfall annually, mostly during June–September. Pre-monsoon *Kalbaisakhi* storms are a notable weather feature.¹

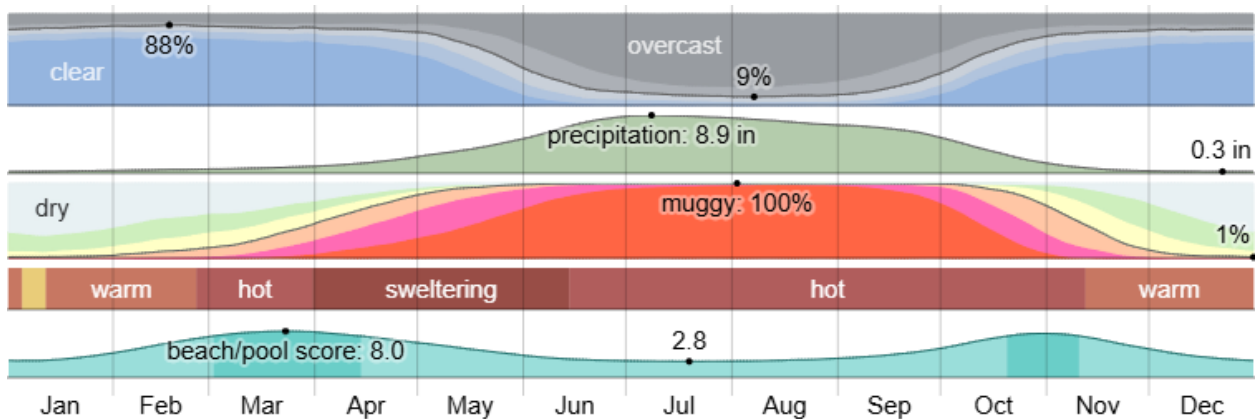


Fig 1 : Climatic Mapping of Bardhaman
Source: Weather Spark

¹ Data taken from, "[Purba Bardhaman](#)"

3. ADMINISTRATIVE PROFILE

The administrative order of the district is led by the District Magistrate. Under him there are 6 Additional District Magistrates. They supervise 4 Sub-divisional Officers who look after the 4 sub-divisions of the district, **Bardhaman Sadar (North), Bardhaman Sadar (South), Katwa and Kalna**. Under them, come the Block Development Officers who look after 23 Blocks, under which there are further the Gram Panchayats. For the urban areas there are 6 Municipalities under the sub-divisions. Further details for the same can be found in Table A 1 and A 2 in Annexure.

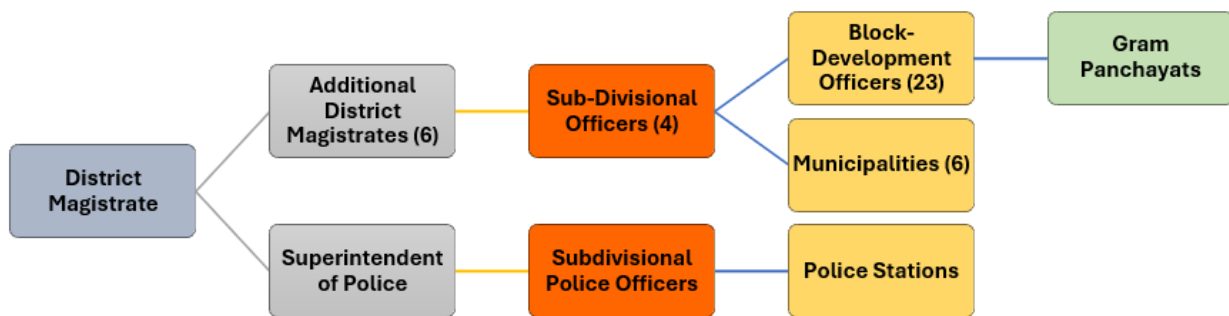


Fig 2 Administrative Order of Purba Bardhaman
Source: Information gathered from [Purba Bardhaman](#) Website

4. LOCATION AND GEOGRAPHY

The district **Purba Bardhaman**, one of the important districts of the Burdwan Division, is situated between 23°53' N to 22°56' N Latitude and 88°25' E to 87°56' E Longitude. It contains an area of 5432.69 Sq.K.M. as ascertained by the latest survey. Geographically, the district lies in the central part of the state, surrounded by Murshidabad, Nadia, Hooghly, Bankura, Paschim Bardhaman and Birbhum districts.²

There are some forest areas in the western part of the district.

The major rivers of the district are,

- Ajay (in the northern part)

² Information gathered from [Purba Bardhaman](#)

- Bhagirathi (at the North-Eastern Part)
- Kumari (Central-Northern Part)
- Damodari (Southern Part)

5. DEMOGRAPHY

According to the Official website of the district, Being bifurcated in 2017, Purba Bardhaman has a **population** of around **4.84 Million** people or 48,35,532 people, with a **Population Density of 890** people per sq. km. There are **51.07 % male** and **48.93% female** population in the district.

The major share, **84.98 %** of the total population belong to the **rural economy** while only **15.02% are urban population**. **40.36 %** of the population are in the **Work Force**. Amongst the total population, **75.48%** people are **literate**.³

The demographic distribution of the district is given as follows,

Table 1: Demographic Distribution

Parameters	Population
Total Population	4.84 Million [48,35,532]
Population Density	890 people/sq. km
Male Share	51.07%
Female Share	48.93%
Rural Population	84.98%
Urban Population	15.02%
Work Force	40.36%
Literacy Rate	75.48%

Source: Data compiled from [Purba Bardhaman District Website](#)

³ Recast Census Data 2011, ([Purba Bardhaman](#))

6. LOGISTIC INFRASTRUCTURE PROFILE

The major townships of Bardhaman are, Burdwan, Memari, Guskara, Kalna, Katwa and Dainhat. Purba Bardhaman exhibits robust logistics groundwork through its road and rail networks, with improving road infrastructure and strong rail connectivity.

Road Transport:

The district is well connected through a wide-spread network of Roadways maintained by the local authorities of the district. There is a rich connection established by the state highways, through almost all parts of the state.

- State Highway 6 (Connects Katwa and Kalna and passing through areas like Behula Ketugram)
- State Highway 7 (Connects the city of Bardhaman to Arambagh, with a section of approximately 33 kms within the district)

The **National Highway 19** also passes through the district. The highway starting from its junction with NH-44 near Agra connecting Kanpur, Allahabad, Varanashi in the State of Uttar Pradesh, Mohania, Aurangabad, Dobhi in the State of Bihar, Barhi, Bagadar, Gobindpur in the State of Jharkhand, Asansol, Palsit and terminating at its junction with NH-16 near Kolkata in the State of West Bengal. Rail Transport

Rail transport is a key strength, with **Bardhaman Junction** serving as a major hub on the Howrah–Delhi route, supported by multiple chord and loop lines including the **Howrah–Bardhaman main and chord lines**, and the **Bardhaman–Katwa** and **Bankura–Masagram** sections. Therefore through Howrah all the intranational distance could be reached. Bihar and Karnataka can also be connected through Bardhaman.

Water Transport

Bhagirathi, Ajay and Damodar are the major rivers of the district capable of assisting on the logistics aspects. Amongst these, Bhagirathi is a part of **National Waterway 1 (NW-1)** further south; with the potential for barge movement during peak flow. This waterway covers Uttar Pradesh, Bihar and Jharkhand.

Air transport

Purba Bardhaman itself does not have any airports within its district boundaries. The nearest airports are the Kazi Nazrul Islam Airport (RDP) in Andal, Paschim Bardhaman district (a domestic airport), and the Netaji Subhas Chandra Bose International Airport (CCU) in Kolkata (an international airport).

- **Kazi Nazrul Islam Airport (KNI Airport / RDP)**

Kazi Nazrul Islam Airport (IATA: RDP, ICAO: VEDG) serves Durgapur and surrounding regions. It's situated at Andal, approximately 17 km from Durgapur city centre and about 34 km from Asansol's bus terminus and about 100 km distant from Purba Bardhaman.

The airport spans 650 acres, featuring a 2,800-meter runway, night-landing capability, and CAT I ILS. The 5,750 sqm terminal handles up to 1 million passengers annually, with airline expansion possible. It also includes ATMs, check-in counters, baggage belts, F&B outlets, Wi-Fi, medical clinic. There's a dedicated cargo terminal, and IndiGo CarGo operates an office at the airport, handling various cargo services and shipments. ⁴

- **Netaji Subhash Chandra Bose International Airport**

This airport in Kolkata is about 105 km distant from Purba Bardhaman.

Export Infrastructure at Netaji Subhash Chandra Bose International Airport (CCU), Kolkata:

Netaji Subhas Chandra Bose International Airport (CCU), Kolkata, boasts a well-developed International Air Cargo Terminal, essential for facilitating exports from the region and connecting businesses to global markets. Here's a breakdown of its key features: International air cargo terminal

- Established Expertise:

Kolkata's International Air Cargo Terminal

- holds the distinction of being the first of its kind in India, commissioned in 1975.

⁴ Information gathered from KNI Airport, BAPL

- Strategic Location: It's situated conveniently, just half a kilometer north of the international terminal building, with robust road infrastructure for seamless cargo movement.
- Extensive Facilities:
 - Covered Area: The terminal encompasses a vast 21,906 square meters of covered space, [according to www.nscbiaairport.com](http://www.nscbiaairport.com).
 - Capacity: It has an impressive annual holding capacity of 120,000 metric tons, including transshipment cargo.
 - Aircraft Accommodation: Four dedicated parking bays cater to freighter aircraft, accommodating large models like the Boeing 747.
- Integrated Services: The Airports Authority of India (AAI) has meticulously designed the terminal to offer a comprehensive range of facilities for efficient cargo processing, comparable to international standards.
- One-Stop Shop: All major airlines and regulatory agencies involved in pre-shipment formalities and clearance are conveniently housed under one roof, streamlining the export process.
- Export Wing: A dedicated export wing within the cargo terminal provides a covered area of 8,516 square meters, including an Elevated Transfer Vehicle (ETV) area of 1,333 square meters.
- Special Cargo Handling:
 - Cold Storage: Dedicated facilities with three chambers and controlled temperatures cater to temperature-sensitive cargo like pharmaceuticals, vegetables, fruits, and meat.
 - Strong Room: A secure strong room handles valuable cargo.
 - Hazardous Cargo Shed: A designated shed safely stores and manages hazardous cargo.
 - Transshipment Shed: Facilitates efficient transfer of goods between flights.
- General facilities
 - Integrated Cargo Management System (ICMS): An online system streamlines data processing and ensures efficient cargo management.

- Equipment: Forklifts, high reach takers, electronic and mechanical weighing machines, cargo trolleys, and power pallet trucks enhance operational efficiency.
 - Parking & Docking: Dedicated idle Unit Load Device (ULD) parking areas and 16 truck docks ensure smooth flow of vehicles and cargo handling.
 - Disposal Unit: Facilitates the disposal of unclaimed or uncleared cargo.
- Connectivity and reach
- Serves as a critical hub for air cargo services across the entire Eastern and Northeastern regions of India.
 - It facilitates international freight transactions with six major global market regions, including South-Asian, South-East Asian Countries, Western Countries, Middle-East Countries, and Central Asia.

In summary, Kolkata Airport's robust export infrastructure, including a well-equipped and strategically located cargo terminal, efficient processing systems, and dedicated facilities for various types of cargo, positions it as a vital gateway for businesses looking to export goods from Eastern India to the global marketplace⁵.

7. EXPORT INFRASTRUCTURE

Purba Bardhaman, with its strong agrarian economy, relies on a well-developed road and rail network to transport its products to key export facilities outside the district. The main export infrastructure is not located within Purba Bardhaman itself, but rather in nearby districts, most notably Kolkata and Paschim Bardhaman, from which goods are shipped internationally.

Land Custom Stations

There is **no Land Custom Station (LCS) located within Purba Bardhaman district**. Land Customs Stations are situated at border crossings to handle trade with neighboring countries like Bangladesh, Nepal, and Bhutan. Since Purba Bardhaman is an inland district and does not share an international border, it does not have an LCS.

⁵ Data Compiled from Airport Authority of India

For all customs-related formalities, residents and businesses in Purba Bardhaman must rely on facilities located in other districts of West Bengal.

Nearby customs facilities and ports

The export infrastructure for Purba Bardhaman is located at other key points in West Bengal, which are accessible via the district's road and rail network.

- **Integrated Check Post (ICP), Petrapole:** This is the closest and largest Indo-Bangladesh border crossing, located in the North 24 Parganas district. It is about 80 km from Kolkata and handles a significant portion of the land-border trade between India and Bangladesh.
- **Inland Container Depot (ICD), Durgapur:** In the neighboring Paschim Bardhaman district, this AEO-certified ICD is operated by Allied ICD Services Ltd. and is a vital hub for cargo handling and customs clearance for exports from the region.
- **Kolkata Customs House:** Located in Kolkata, this is the main customs administrative office for the region and oversees customs clearance for cargo moving through the city's ports and airports.
- **Haldia Port:** For bulk cargo exports, Haldia Port is a major gateway in West Bengal.

Integrated Check posts in Purba Bardhaman

There are no Integrated Checkposts (ICPs) located in Purba Bardhaman district. Integrated Checkposts are facilities established by the Indian government at the country's international land borders to manage cross-border trade and the movement of passengers.

Purba Bardhaman is an inland district that does not share a border with any other country. Therefore, goods from the district must be transported to other parts of West Bengal to be processed for export.

Closest operational Integrated Check post: The nearest major operational ICP for trade with Bangladesh is at Petrapole situated in the North 24 Parganas district, which is significantly south and east of Purba Bardhaman. The ICP at Petrapole is a key land port that handles a high volume of trade between India and Bangladesh.

Cold Storages facilities in the District

There are total 81 storages in Bardhaman, as according to the National Horticulture Board data. Eventually all of these storages are Potato storages. The Jay Maa Kali Cold Storage Pvt. Ltd. Has the most (5) chambers. Amongst 81, 21 storages does not have any additional facilities. However, the rest 60 storages are equipped with facilities like Packaging, Grading, Drying, pre-cooling, Ripening Chamber – according to their own needs. Two of these storages are presently being used Multi-purposefully - Bedia Cold Storage Pvt. Ltd. and Shree Durga Cold Storage Pvt. Ltd. These have capacities of 8000 MT and 138887 qtl. respectively. The Bedia Cold Storage Pvt. Ltd. Is the only storage to get subsidy⁶.

Further details of all the storages can be found in Table A3, in the Annexure section.

Warehouse facilities in the District

Purba Bardhaman, with its strong agricultural and growing industrial base, has a variety of warehouse and storage facilities, including government-operated centers and numerous private options. The warehouses cater to different needs, from agricultural produce and cold storage to industrial goods and general merchandise.

There are 24 warehouses, out of which 15 are for only Rice under the Rural Infrastructure Development Fund of the state government of total capacity of 75000 MT. 4 warehouses are rented by the State Government for multi-purpose usage of capacity of 17442 MT. 5 warehouses are also registered under Warehouse Regulatory Development authority having a total capacity of 53000 MT⁷. (Refer Table A4 in the Annexure)

8. AGRICULTURAL PROFILE

Purba Bardhaman is the only district in the state of West Bengal that is fortunate both in industry and agriculture. On an average about 58 percent of the total population belongs to the agricultural population while the non-agricultural sector accounts for the remaining 42 percent. The eastern, northern, southern and central areas of the district are extensively cultivated but the soil of the

⁶ Data compiled from National Horticulture Board and MOFPI

⁷ Data compiled from State Warehousing Corporation and Warehouse Regulatory Development Authority

western portion being of extreme lateritic type is unfit for cultivation except in the narrow valleys and depressions having rich soil and good moisture.

Amongst the reporting land of 698.74 thousand Hectares, 22.27 thousand Hectares (3.19%) are Forest infested. The net-cropped area is 466.63 thousand Hectares.

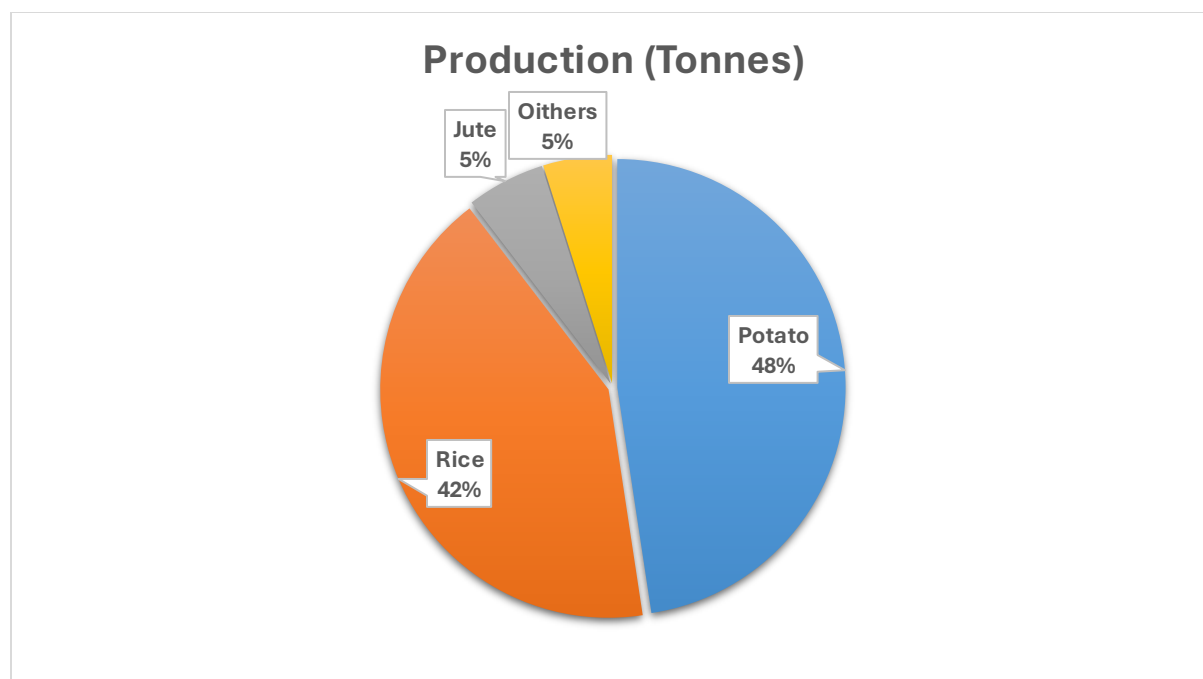


Fig 3 Agricultural production of Purba Bardhaman

As can be observed from Figure 8.1, **Potato** is the most produced crop of the district with a share of 48%. It covers an area of 67,692.00 Hectares.

Purba Bardhaman has traditionally been called the Rice Bowl of West Bengal. Consequently, **Rice** is the second highest produced crop of the district, not lagging by much from Potato, covers about 42% of the agricultural basket of Purba Bardhaman. It covers around 5,38,441.00 Hactares of land for cultivation.

Further, **Jute** is produced about 5% of the agricultural basket of the district, covering land of 11,018.00 hactaers.

There are several other crops being cultivated in the district with not yet significant output (production-wise). These are, Sugarcane, Rapeseed & Mustard, Sesamum, Masoor, Wheat, Gram, Khesari, Groundnut, Mesta, Moong (Green Gram), Maize, Peas & beans (Pulses), Urad, Linseed, Arhar/ Tur and Sunflower.

The detailed data of agricultural production is reported in Table A5, in the Annexure section. ⁸

Horticulture Profile

Horticulture is developing in Purba Bardhaman, a district rich in agricultural potential, with a focus on diversifying crops beyond rice to include fruits, vegetables, and flowers to provide better returns for farmers.

Table 2 Fruit Production in Purba Bardhaman

Name	Area in (Thousand ha)	Production in Crore Sticks (2023-24)	Unit
Mango	3.945	26.865	Thousand MT
Banana	9.026	199.470	
Papaya	0.675	20.372	
Guava	0.74	9.48	
Total	14.386	256.19	

Source: "Report from the Directorate of Horticulture Dept. of FPI & H, Govt. of W.B."

Banana is the most produced fruit of Purba Bardhaman, having a 77.86% share of the production of the major fruits. Consequently, it also subscribes to the maximum land cultivated, 62.74% amongst the above listed.

Table 3 Flower Production in Purba Bardhaman

Name	Area in (Thousand ha)	Production in Crore Sticks (2023-24)	Unit
-------------	------------------------------	---	-------------

⁸ Information gathered from [Purba Bardhaman District Website](#)

Rose	0.002	0.016	Thousand MT
Chrysanthemum	0.186	33.745	
Gladiolus	0.25	5.797	
Marigold	0.069	0.239	
Total	0.507	39.797	

Source: "Report from the Directorate of Horticulture Dept. of FPI & H, Govt. of W.B."

Chrysanthemum is the maximum cultivated flower (84.80%). Gladiolus also has some considerable production (14.57%).

Table 4 Vegetable Production in Purba Bardhaman

Name	Area in (Thousand ha)	Production (2023-24) [Thousand MT]
Other Vegetables	10.616	130.831
Brinjal	6.832	124.246
Cabbage	3.341	95.826
Cauliflower	3.405	89.606
Onion	3.09	51.2
Ladies Finger	3.195	46.766
Other Cucurbits	1.22	46.694
Tomato	2.1	35.48
Arum (Kachu)	1.624	31.357
All Vegetable	52.699	814.922

Source: [2023-24 Final Estimate of Area and Production of Vegetables](#), Department of Food Processing Industries and Horticulture

Other Vegetables being an accumulated group, tops the table with 16.05% share of production. Apart from that, **Brinjal** (15.25%), **Cabbage** (11.76%) and **Cauliflower** (11%) have the major shares in the output basket.

Table 5 National Agricultural Mandi in Purba Bardhaman

Name	Major Commodities Trading
Kalna sub-market yard	Bitter gourd, brinjal, cabbage, carrot, cauliflower, cucumber, ginger, green chilli, ladies finger, onion, parwal, potato, tomato

Source: Data taken from [West Bengal State Agricultural Marketing Board](#)

Therefore, a lot of the vegetables, produced in the district [such as, Brinjal, Cabbage, Cauliflower, Ladies Finger, Onion, Tomato] are being sold at the Mandi.

9. INDUSTRIAL PROFILE

Purba Bardhaman is majorly an agriculture-intensive district, therefore, the major industries present here are also primarily agrarian or agro-product based. Mainly Rice Mills, Oil Mills and processing units of food products are the face of the industrial profile of the district. Some of the notable rice mills are

- **Bardhaman Agro Products (I) Private Limited:** Specializes in premium varieties like Jeerakasala and Gobinda Bhog rice, serving markets across India and abroad.
- **Santi Rice Mills:** An established name in the production of muri (puffed rice).
- **Aditya Agro Industries:** A supplier and commission agent for rice, paddy, and husk

The other notable industrial existence in the district are :

- **Shaktigarh Textile and Industries Limited**

With over 6 decades of experience in the Jute Industry, they are one of the largest extant manufacturers of jute products. Their expertise is amplified by the machinery, technology, and product innovation employed.

They are equipped with **modern design sheds, manufacturing floors, warehouses, and state-of-the-art infrastructure**. More than 50% of the areas in the factories are dedicated to common facilities and open greenery for a healthy working environment.

Skill development and training programmes are their core focus.

- **Indian Stainless Steel Development Association (ISSDA)**

The Indian Stainless Steel Development Association (ISSDA) is a not-for-profit organization committed to the growth and development of stainless steel industry in India. Founded in 1989 by leading stainless steel producers, it was formed with the explicit objective of diversifying the applications of stainless steel in India and increasing usage volumes in the country.

- **Shaktigarh Industrial Estate, Phase-I**

Located in Barsul Post Office area, the SHAKTIGARH INDUSTRIALESTATE, PHASE-I covers an area of 3.10 Acre. There is one Plot, 20 Sheds, and four stalls under it. The estate has **12 functional units** and 5 non-functional units. The concentration of this estate is on **Electronics goods** etc. The direct employment of the estate is **140 people** and indirectly it employs 50 people.⁹

MSME Clusters

According to the Directorate of MSME, Govt. of West Bengal, there are 50 clusters in Purba Bardhaman.

However, among them, except for 3, all the rest 47 clusters belong to the Textile and Readymade garments Industry, whereby, majority of them deal with Production of Jamdani Saree. Around 19000 workers are engaged in the jamdani and Tangail weaving in the district

Apart from the Readymade Garment sector, there is one Food Products & Processing Cluster for producing Sugarcane jaggery, one Basic Metal & Alloy Industries Cluster and one Jute & Other Fibre Based Products Cluster. These three together employ 600 people (2.99% of the total employment by the clusters) and possess, 63 units of operation (0.36% amongst the total units by the clusters).

There are also two SFURTI clusters in this district namely the Dokra Craft Cluster and Coir Cluster of Panuhat giving employment to 500 and 600 workers respectively.

⁹ Information gathered from [WBSIDC booklet](#)

The pollution control board of West Bengal also indicates the existence of Zari & Zardozi Industrial Cluster in Bajitpur, Sehrabazaar which operates through **Seharabazar Zari & Zardoushi Product Manufacturing Industrial Cluster Co-operative Society Ltd¹⁰**

The details of all these clusters is given in Table A6, in the Annexure section.

10. Banking Profile

There are 971 branches of all categories of banks viz. Commercial Banks (254), Regional Rural Banks (RRBs) (60), Cooperatives (Short Term – 29, Long Term - 6, Primary Agriculture Cooperative Society - 517) and others including private sector banks and small finance banks (105) in the district.

The leading bank of the district is, UCO Bank.

Due to various efforts and measures undertaken, the **CD Ratio** of the district has **improved to 52%** as on 31 March 2023. For achieving CD ratio of 60% and beyond, it is suggested that banks should pro-actively come forward and **finance MSME sector** as well as SHGs and JLGs, ancillary activities etc.¹¹

¹⁰ Data comailed from West Bengal Pollution Control Board

¹¹ Information taken from [Potential Linked Credit Plan, 2024-25, Purba Bardhaman, NBARD](#)

11.ODOP Sector of the District

Four Products have been identified the ODOP sectors for Purba Bardhaman.

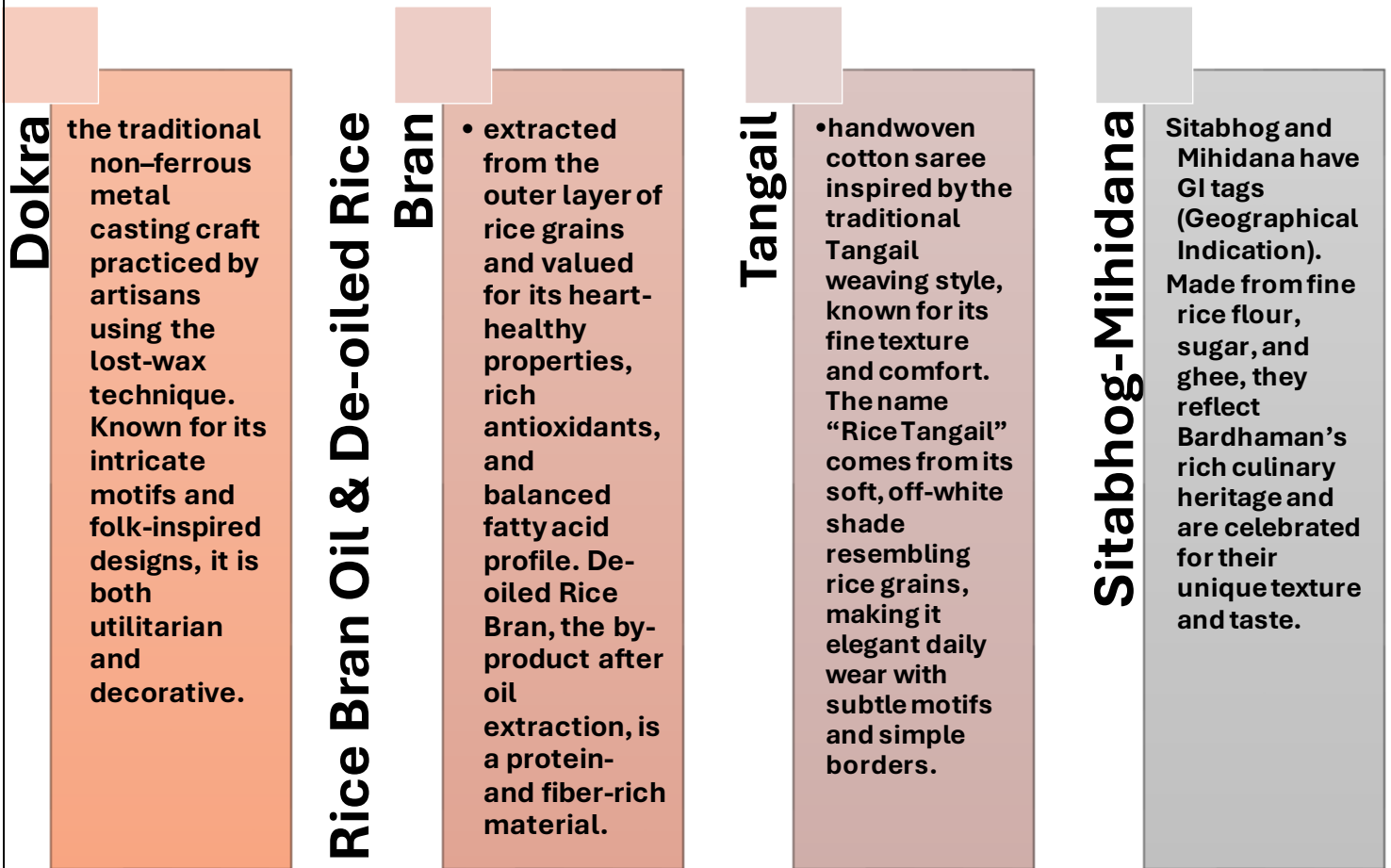


Fig 4 : ODOP and GI of the District

12.EXPORT PROSPECTS & POTENTIALITY OF THE DISTRICT

Purba Bardhaman, with its rich agricultural base, possesses significant export potential, particularly in agro-based products and specialized processed foods. The district leverages its position as the "rice bowl of West Bengal" and benefits from state and central government initiatives to promote exports. The export volume of Purba Bardhaman has increased from 2022-23 to 2024-25, by 30.71%.

Parboiled Rice (10063010) dominates the export basket with a share of 50.45%. Except for that, Other Rice products given by, 10063090 and 10062000 make the Top 3 most exported products

from the district. Together the Rice products make for 83.96% of the total export basket of the district.

There are other products like chemical goods, engineering goods, Iron & Steel casts, Jute products etc. Their individual contribution to the district's export are negligible, 2.29%. Together they make for 16.04% of the exports.(Refer Table A7 in the Annexure)

In Fig 5 given below, as observable, the Rice products take up about 84% of the whole pie. In the second position are the Chemical products with a huge difference in share, 7.1%. Then there are Iron & Steel, Paper products and a very negligible portion of Jute products.

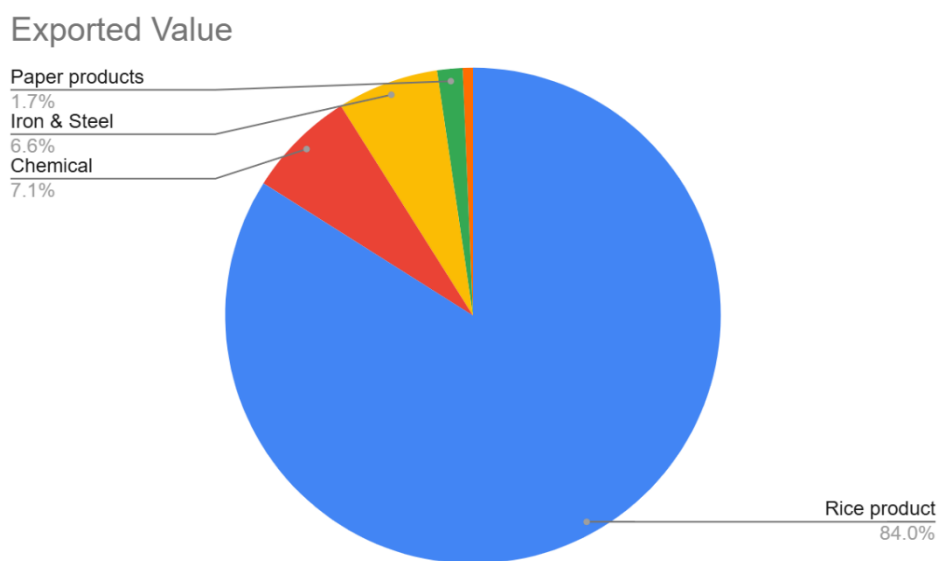


Fig 5 Sectorial Composition of Exported products from Purba Bardhaman

Potential Market Analysis for the District

In this section we highlight the products having potential for the new entrants and report the product trends behaving in an abrupt non-linear fashion.

The top most exported product (10063010) from the district has grown by 114.43% in the recent years (2022-23-2024-25). Its global demand has also increased by a 47.17%, that indicates positive potential for the market in future.

HS Code 10063090 or Milled Rice, however, despite being the second most exported product of the district, has actually declined in its exports from India by 13.84%, while its global demand keeps growing at 47.17%. Despite the decrease in exports in recent times, India still is ranked first amongst the competition.

On the contrary, the third item exported, Dregs and Wastes (23033000) has shot up its export from India by a 77790.27% in the recent years. Its global demand has grown by 53.46%. India is ranked third in exports of the same.

Similarly, the Indian export of Husked or Brown Rice (10062000) has also grown by 1558.09%. Its global demand however, has grown only by 14.18%.

The export of Fluting Papers (48051900), from India, has declined as well in the recent years, by a 67.24%, while its global demand keeps increasing by 9.73%. Infact, India is ranked 21 in the exporter's rank. The fact that India is not supplying to the major importing countries of the product, is observed from the data given.

The market for Jute Handbags (42022230) has grown by 18.72%, in the supply side during the period while the global demand has grown by 53.23%. India is ranked seventh in world exports. The top importing countries are yet to be exploited by India, enough so that, they become India's top market.

India's export growth (41.84%) and the world import growth (41.43%) for Testliners (48052400) go almost in parity. India however, is ranked twenty first in the exporter's list. The top five countries India is exporting to, do not resemble the top global importer's list for the product.

Further details of the market statistics for the products can be observed in Table 5 below

Table 5: Export Prospect Analysis of Purba Bardhaman

Unit: USD Millions

Export Status	HS Code	Product Details	Exported value in 2020	Exported value in 2021	Exported value in 2022	Exported value in 2023	Exported value in 2024	Export growth of India in five years (in %)	World Import Growth of the sector @ 6 digit in five years (in %)	Top five importers of India	Top ten importer of the sector @ 6 digit in world market	India's rank in world exporter list of the sector
Currently exporting from the district	10063010	Semi-milled or wholly milled rice, whether or not polished or glazed: Rice parboiled	1807.79	2965.22	2769.67	3151.22	3876.45	114.43	47.17	Benin,Guinea, Côte d'Ivoire,Togo, Somalia,	Indonesia,Philippines,Saudi Arabia,Iraq, United States of America,Malaysia, Côte d'Ivoire,Iran, United Arab Emirates, Benin	1
	10063090	Semi-milled or wholly milled rice, whether or not polished or glazed: Rice except parboiled (excluding basmati rice)	1333.61	1971.93	2123.72	1350.74	1149.00	-13.84	47.17	Cameroon, Viet Nam, Malaysia, Kenya, Guinea	Indonesia,Philippines, Saudi Arabia,Iraq, United States of America,Malaysia, Côte d'Ivoire,Iran, United Arab Emirates, Benin	1
	23033000	BREWING OR DISTILLING DREGS AND WASTE	0.11	1.12	4.73	37.97	88.02	77790.27	53.46%	Viet Nam, Bangladesh, Nepal, Sri Lanka, Malaysia	Mexico,Korea, Republic of Viet Nam,Türkiye,Indonesia, Canada,Ireland,United Kingdom,Japan,New Zealand	3
	10062000	Husked or Brown Rice	10.96	30.37	12.32	54.34	181.73	1558.09	14.18	Viet Nam, Malaysia, Nigeria, Netherlands, Benin	Korea,United Kingdom, Belgium,Brazil,Spain, Netherlands,Viet Nam, Nigeria,Portugal, France	4
	73259999	Cast articles of iron or steel, n.e.s. (excluding articles of non-	215.98	291.95	269.30	233.34	244.22	13.07	28.51	USA, Italy, germany, Spain, UK	Italy,Germany,United States of America,France,Poland,	1

		malleable cast iron, and grinding balls and similar articles for mills): Other cast articles of iron or steel n.e.s									United Kingdom, Netherlands, Spain, Czech Republic, Austria	
	72023000	Ferro-silico-manganese	602.12	1273.79	1612.74	1077.91	1021.98	69.73	27.00	Japan, Egypt, UAE, Italy, Taipei	United States of America, Türkiye, Japan, Italy, Germany, Korea, Indonesia, Egypt, United Arab Emirates, Taipei, Chinese	1
	48051900	Fluting paper, uncoated, in rolls of a width > 36 cm or in square or rectangular sheets with one side > 36 cm and the other side > 15 cm in the unfolded state (excluding semi-chemical fluting paper and straw fluting paper)	154.44	321.64	130.06	85.08	50.59	-67.24	9.73	UAE, China, Bangladesh, Sri Lanka, Tanzania	China, Poland, Germany, Italy, France, Czech Republic, Belgium, United Kingdom, Portugal, United States of America	21
	73259910	Cast articles of iron or steel, n.e.s. (excluding articles of non-malleable cast iron, and grinding balls and similar articles for mills): Other cast articles of iron malleable	209.84	295.21	314.31	270.88	303.80	44.77	28.51	United States of America, Germany, Italy, United Kingdom, Spain	Italy, Germany, United States of America, France, Poland, United Kingdom, Netherlands, Spain, Czech Republic, Austria	1
	42022230	Handbags, whether or not with shoulder straps, incl. those without handles, with outer surface of plastic sheeting or	63.62	106.12	107.96	85.31	75.53	18.72	53.23	France, United States of America,	China, United States of America, France, Italy, Hong Kong, Korea, Germany, Spain, United Kingdom, Japan	7

		textile materials: Jute hand bags/shopping bags.									United Kingdom, Belgium, Netherlands		
	480524 00	Testliner "recycled liner board", uncoated, in rolls of a width > 36 cm or in square or rectangular sheets with one side > 36 cm and the other side > 15 cm in the unfolded state, weighing <= 150 g/m ²	26.42	98.42	73.01	45.09	37.48	41.84	41.43		Sri Lanka, United Arab Emirates, China, Tanzania, Oman	China,Poland,France,Italy,United Kingdom,Germany,Belgium,Canada,Czech Republic,United States of America	21

Source: Data compiled from [Trademap](#)

13.SWOT ANALYSIS

Studying and examining the different aspects of the district and collecting data from the primary and secondary sources and the focus group discussions conducted in the district, the SWOT Analysis of the district in terms of export development has been depicted below

<p>STRENGTHS</p> <ul style="list-style-type: none"> • “Rice Bowl” of West Bengal • Well-connected Rail & Road transport • Full Value Chain presence for rice production with the presence of strong millers. • The endorsed products of the district perform well for the nation's export, given by India’s exporting rank. • Existence of organized clusters for production of Jamdani sarees • Ample cold storage and warehousing facilities. • Availability of skilled workforce. • Two GIs for Sweet Meat – Sitabhog and Mihidana. • Good support industries for agricultural sector. 	<p>WEAKNESSES</p> <ul style="list-style-type: none"> • Highly cluttered with clusters for Jamdani sarees denying scale economies. • By-products of paddy except rice lacks support • CFCs are established in coir and zri products which have very limited scales. • Lack of Export Facilitation and International Marketing Assistance, especially regarding the authenticity of the ODOP or GI products. • Lack of support for R&D, Quality Certifications required for agricultural and handloom products. • High dependence on rice and potato in most of the economic activities in the district. • Low productive handloom saree segment
<p>OPPORTUNITIES</p> <ul style="list-style-type: none"> • Growing International market for Food Processing and rice. • E-commerce exports are gaining momentum • Supportive schemes of both the Central and State Governments for exports • Opportunities for value addition in farm products like rice husk, rice bran etc. 	<p>THREATS</p> <ul style="list-style-type: none"> •Emergence of sustainability and ESG parameters as NTBs for agricultural and non-agricultural farming. •Rice is subject to geo-political and volatile policy environment. •Importance of organic farming (vs) productivity.

- | | |
|--|--|
| | <ul style="list-style-type: none">• Climate changes and unstable monsoon conditions impacting the agricultural farming. Over-congestion of the cluster due to horizontal expansion, especially in the Readymade Garments section |
|--|--|

14.EXPORT CHALLENGES OF THE DISTRICT

Purba Bardhaman district is predominantly based on agricultural products majorly Rice. However, there are many handloom textile units involved in jamdani saree production. The major contributions for exports from the district is accounted by Rice and Rice products (84%). This is followed by Chemical and Iron & Steel (13.7%) which are predominantly accounted by the MSMEs. Though the export as captured in the trade data indicates more exports of Rice there are considerable exports of handloom jamdani, kantha stich and Tangail fabrics, jute bags etc. through traders from outside the district or state. The broad issues for the exported and potential products include insufficient R&D and testing facilities for agro products, limited market access, and lack of awareness about modern and effective production practices.

Infrastructure and logistics

- Warehouse and cold storage facilities: The district has ample cold storage facilities for majorly potato and warehouses for rice. However, the facilities available for agricultural and horticultural products are very limited and insufficient to boost exports.
- Though the district has more handloom clusters they are more cluttered and following no uniform patterns which sans CFCs. Hence the scale benefits could not be obtained.
- The infrastructure and logistics for export of value added agricultural and horticultural products remained unexplored.

- Transport: The district has one of the most robust transport facilities in the state which promotes economic activities to a larger extent. It has good road and rail connectivity and also the inland waterways.

Market access and finance

- Difficulty reaching export markets: Exporters, particularly small artisans and handicraft producers, have trouble accessing international markets due to lack of awareness and hence depend on the traders from different states and Kolkata which not only denies direct export but also fetches low price. The rice exports also are carried out majorly by traders.
- Limited access to formal credit: Financing challenges, such as high initial investment costs for upgrades to infrastructure or technology, are significant barriers for many small producers and SHGs which requires creation of common facilitation centres. Most of the MSMEs are also reluctant to have the GST registrations fearing compliance cost. Money lenders are the major source of agricultural credit.
- Weak export strategy: Though government initiatives exist to boost exports, there are gaps in the district-level execution of a robust strategy for products with high export potential, such as handlooms and dogra arts.
- Though the district has two GIs, they are not well exploited for export markets.
- The SEFC should make specific interventions to implement the district level initiatives.

Operational and Environmental challenges

- Though there are two CFCs for Zari & Zardosi and Coir products, their effectiveness and scale are very minimal. The effectiveness of the CFCs needs to be monitored and increased.
- Climate change impacts: Irregular rainfall, frequent floods, and climate changes significant risks to both agriculture and horticulture sectors.. Unpredictable weather directly disrupts crop yields.
- Though there are storage facilities they provide more standalone services which could bring in service bundling along with storage like certifications, testing etc.

- Lack of modern technology: Cold storages and the ware houses in the district lack modern machinery and technological knowledge, for economical storage and shelf life of agricultural products.
- Given the requirements for organic farming and use of technology the farmers need proper training on modern technologies in agricultural operations.

GIST OF THE ANALYSIS

The following are the salient points which emerge from the above discussions:

- The major export of the district is contributed by Rice products which accounts for around 84% of the total exports as reported in the year 2024-25, followed by 13.7 % of Chemical and Iron Steel products. Though the district hosts industrial clusters for handloom fabrics, jute products and dogra art products their export contribution is minimal.
- Opportunities for value added exports of rice based products and paddy by-products like rice bran oil and husks are high.
- The district has sufficient warehouse and cold storage facilities majorly for rice and potato but lacks proper modern facilities.
- Several units located in the handloom clusters are majorly acting as feeder units for MSMEs located in other districts.
- Most of the cluster items produced from the district by MSMEs are suitable for e-commerce exports.
- Exports of MSME products of the district are mostly routed through traders in Kolkata/outside the state.

15. EXPORT ACTION PLAN SUGGESTED

Based on the above facts, analysis of the data and the input from the stakeholders, the following action plan is suggested. The action plan also indicates the desired output of the strategic actions, the responsible agency and the proposed intervention/tool for implementation. It has also been highlighted the activity/activities where a DPR may be required.

Strategic Action	Output Desired	Suggested Agency	Instrument/Intervention
Creation of centralised procurement/Marketing unit for the Handloom products	Scale benefits for exports	MSME&T, WB	MSME&T, WB may unite the existing Handloom textile clusters through a centralised system for effective market reach of the products. It should be formed by the existing cooperative industrial clusters and the Department may oversee the formation and operation of the same.
Operational issues at the CFCs for Zari and Coir products	Increased capacity utilization for exports	State Govt	The issues faced by the interested units to utilise the CFCs need to be taken up by the State Government through the DIC and address the barriers to effective utilisation of the CFCs. As the raw material required for the CFS is are to be procured from outside the district, necessary steps need to be taken for proper flow of raw materials for the CFCs.
Foreign Post office facility in for E com Exports	Ease of E-Com exports through Dak Niryat Kendra	Postal Dept. + Customs	Mobile foreign post office visiting the district on designated days
Strengthening the processes of Warehouse and Cold Storage facilities available in the district for potato and rice.	Utilization by other agricultural producers with value added services for testing, packing and packaging etc	State Govt	The Warehouses may provide licensed or franchised testing and cold storage services to the other suitable products. They may also utilise packaging services through empanelled vendors.

Handholding for direct exports of MSMEs	Increased direct exports from the state	State Govt + GoI	Use acceleration services by institutions like IIFT under suitable schemes. The State Govt. may also launch export incubation fund for supporting the Direct Exports.
Training on effective practices and packaging for MSME handicraft producers, majorly dogra and handloom fabrics.	Improved productivity and market reach	State Govt.	The Ministry of MSME&T may take up suitable training facilities for the MSMEs and SHGs with expert agencies. Similarly a suitable facilitation for packing and packaging practices may be arranged by the Dept. of MSME. The products identified for the same includes dogra handicrafts, handloom fabrics and jute products.
Product and district specific capacity building on exports of MSMEs	Direct exports from MSMEs to diverse markets	State Government	The existing SEFC should undertake time bound product and district specific capacity building of MSMEs in rice and value-added rice products, handloom and handicrafts.
Motivation for Rice Bran Oil and Rice bran cakes etc production	Export product diversification	State Government +GOI	Given the rice production in the state, the by-products of paddy may be used for rice bran oil production and environmentally friendly bran and husk bricks which will enjoy a niche in the export markets.

16.ANNEXURE

Table A1 Subdivision of Purba Bardhaman District

Subdivision-Name	Address	Contact number
Bardhaman Sadar (North)	New Administrative Building,Court Compound,Bardhaman 713101	0342-2662353
Bardhaman Sadar (South)	New Administrative Building,Court Compound,Bardhaman 713101	0342-2663319
Katwa	Sanhati Pally, Katwa, West Bengal 713130	03453-255550
Kalna	Kalna Rd, Uttar Goara, West Bengal 713409	03454-255028

Table A2 Blocks of Purba Bardhaman District

Blocks-Name	Address	Contact number
Ausgram-I	Vill.+ P.O. – Gushkara,Purba Bardhaman-713128	03452-255056
Ausgram-II	Vill.+ P.O. – Amrargarh,Purba Bardhaman-713155	0343-2517226
Galsi-I	Vill.+ P.O. – Budbud,Purba Bardhaman-713403	0343-2512244
Galsi-II	Vill.+ P.O. – Galsi,Purba Bardhaman-713406	0342-2450243
Khandaghosh	Vill.+ P.O. – Sagrai,Purba Bardhaman-713424	03451-253310
Burdwan-I	Vill. – Kamnara,P.O. – Mirzapur,Purba Bardhaman-713102	0342-2622577
Burdwan-II	Vill. – Borsul, P.O. – Borsul (Unnayani),Purba Bardhaman-713124	0342-2586243

Bhatar	Vill.+ P.O. – Bhatar,Purba Bardhaman-713125	0342-2322235
Raina-I	Vill.+ P.O. – Shyamsundar,Purba Bardhaman-713424	03451-260222
Raina-II	Vill.+ P.O. – Madhabdihi,Purba Bardhaman-713424	03451-251226
Jamalpur	Vill.+ P.O – Jamalpur,Purba Bardhaman- 713 408	03451-288251
Memari-I	Vill.+ P.O – Memari,Purba Bardhaman-713 146	0342-2250204
Memari-II	Vill.+ P.O – Paharhati,Purba Bardhaman-713 168	0342-2700271
Monteswar	Vill.+ P.O – Monteswar,Purba Bardhaman-713 145	0342-2750278
Mongalkote	Vill.+ P.O. – Natunhat,Purba Bardhaman- 713147	03453-266222
Ketugram-I	Vill.+ P.O – Kandra,Purba Bardhaman-713129	03453-273231
Ketugram-II	Vill.+ P.O – Gangatikuri,Purba Bardhaman- 713 515	03453-270260
Katwa-I	Vill. – Panchghara,P.O – Khajurdihi,Purba Bardhaman-713 156	03453-255253
Katwa-II	Vill.+ P.O – Dainhat,Purba Bardhaman-713 502	03453-244238
Purbasthali-I	Vill.+ P.O – Srirampur,Purba Bardhaman-713 502	03472-240335
Purbasthali-II	Vill.+ P.O – Patuli,Purba Bardhaman-713 512	03453-244238
Kalna-I	Vill.- Rangpara, Lichutala,Purba Bardhaman-713 409	03454-255150
Kalna-II	Vill.+ P.O – Singarkone,Purba Bardhaman-713 170	03454-241226

Source: Information collected from Purba Bardhaman Website

Table A3 : Cold storage in the District

S.No.	Name of the Cold Storage	Type of Cold Storage	Total Capacity	No of Chambers	Other Facilities Available
1	Jay Maa Kali Cold Storage Pvt. Ltd.	Potato		5	, , , ,
2	Durgamata Cold Storage	Potato	178226 qtl	4	Packing, , Grading, Pre-Cooling, Drying
3	Khajurdhi Samabaya Cold Storage	Potato	5600 mt	4	Packing, Ripening

4	Khajurdhi Samabaya Cold Storage	Potato	5600 mt	4	chamber, Grading, Pre-Cooling,
5	Krisak Kalyan Samabay Himghar Ltd.	Multipurpose	Potato-210000 pckts, Egg-12000 box	4	, , , Pre-Cooling, Drying
6	Magra Cold Storage Pvt. Ltd.	Potato		4	, , , ,
7	Vikrampur Cold Storage Pvt. Ltd.	Potato		4	, , , ,
8	Agrasen Cold Storage Pvt. Ltd.	Potato		4	, , , ,
9	Kunurika Bahumukhi Samabay Himghar	Multipurpose	10000 mt	3	Packing, , Grading, Pre-Cooling, Drying
10	Sivashanti Cold Storage Pvt. Ltd.	Potato	100000 qtl	3	Packing, Ripening chamber, Grading, Pre-Cooling,
11	Kalyan Cold Storage	Potato	108000 qntl	3	, , , ,
12	Ramaswarpur Cold Storage (P) Ltd.	Potato	112293 qtl	3	Packing, , Grading, Pre-Cooling,
13	Satimata Himghar.	Potato	2,91,122 Packets	3	, , , Pre-Cooling,
14	Seva Cold Storage	Potato	260000 qntl	3	Packing, , Grading, Pre-Cooling,
15	E.R Cold Storage Pvt. Ltd.	Potato	377000 pkt	3	, , , Pre-Cooling,
16	Sri Krishna Potato Storage (P) Ltd.	Potato	780 mt	3	, , , ,
17	Annapurna cold storage.	Potato	94,191 qtl.	3	, , , ,
18	B. D. Cold Storage	Potato		3	Packing, , Grading, ,
19	Mahamaya Cold Storage Pvt. Ltd.	Potato		3	, , , ,
20	Shridharpur Co-Op Bank Cold Storage	Potato		3	, , , ,
21	Kailash cold storage pvt.ltd.	Potato	1,50,600 qtl.	2	Packing, , Grading, Pre-

					Cooling, Drying
22	Rasulpur Cold Storage	Potato	105000 bags	2	, , , ,
23	Dakhin Damodar Cold Storage	Potato	190000 Bags	2	Packing, , Grading, Pre- Cooling, Drying
24	Dharmaraj Cold Storage Pvt. Ltd.	Potato	280000 bags	2	
25	Shri Jagannath Cold Storage	Potato	280000 qtl	2	Grading
26	Satyanarayan Cold Storage Pvt. Ltd.	Potato	398000 bags	2	Grading, Pre- Cooling, Drying
27	Bengal cold storage.	Potato	79602 qtl.	2	Grading, Pre- Cooling, Drying
28	Ankur Cold Storage	Potato	958	1	Packing, Grading, Drying
29	Shivasakti Cold Storage	Potato	959	1	
30	Kalna- II CADP F.S.C.S	Potato	1000	1	
31	Kali Mata Cold Storage	Potato	1052	1	
32	M/S Kalyan Stores (Dhatrigram) Pvt. Ltd	Potato	1083	1	
33	Ambika Himghar Pvt. Ltd.	Potato	1114	1	
34	Rameswarpur Cold Storage	Potato	1122	1	
35	Bulbulitala Cold Storage	Potato	1150	1	
36	Mogra Cold Storage	Potato	1157	1	
37	Singerkone Maa Annapurna Cold Storage & Agro Projects (P) Ltd.	Potato	1200	1	
38	Hemanta Cold Storage	Potato	1238	1	
39	Kamal Cold Storage	Potato	1269	1	
40	Rajrajeswar Cold Storage	Potato	1378	1	
41	Debnath Cold Storage	Potato	1400	1	
42	Baidyapur Himghar	Potato	1400	1	
43	Guptipur Cold Storage	Potato	1405	1	
44	B. D. Cold Storage	Potato	1686	1	
45	Agrasen Cold Storage	Potato	1960	1	
46	Khalishpur Cold Storage	Potato	2037	1	
47	Biswanath Cold Storage	Potato	3000	1	
48	Kalna- II CAMS	Potato	3442	1	
49	Samudragarh Cold Storage	Potato	3950	1	

50	Krishi Vikash	Potato	4000	1	
51	Satima Cold Storage	Potato	4494	1	
52	Golock Cold Storage	Potato	5977	1	
53	Joy Makali Cold Storage	Potato	6500	1	
54	Kulti Samabay Cold Storage	Potato	6653	1	
55	Shri Krishna Potato Storage Private Ltd.	Potato	7800	1	
56	Memari Cold Storage	Potato	9000	1	
57	Utra Cold Storage	Potato	9568	1	
58	Kalna Cold Storage	Potato	9895	1	
59	Boharia Ice & Cold Storage	Potato	42095	1	
60	Sree Hanuman Ice & Cold Storage	Potato	101000 bags	1	
61	Shree Durga Cold Storage Pvt. Ltd.	Potato	138887 qtl	1	Grading
62	Semia Jain And Com	Potato	192964 qtl	1	Grading,Drying
63	Shamali Cold Storage	Potato	288000 packets	1	Packing, Ripening chamber,
64	Samudragarh Cold Storage	Potato	400000 bags	1	Grading, Pre-Cooling,
65	Katwa Cold Storage	Potato	66482 qtl	1	Packing, ,
66	Bedia Cold Storage Pvt. Ltd.	Potato	8000 MT	1	Grading, Pre-Cooling,
67	Jawala Cold Storage	Potato	92000 qtl	1	, , , ,
68	Himalaya Cold Storage	Potato	98000 qtl	1	, Ripening chamber, , Pre-Cooling,
69	Satima Cold Storage	Potato		1	, , , ,
70	Burdwan Cold Storage Pvt. Ltd.	Potato		1	, , , ,
71	Memari Cold Storage	Potato		1	, , , ,
72	BhulbhuliTalla Cold Storage Pvt. Ltd.	Potato		1	, , , , Drying
73	Biswanath Cold Storage	Potato		1	, , , ,
74	Shyam Ali Cold Storage Pvt. Ltd.	Potato		1	, , , ,
75	Paharhati Outtar Memari Co-Operative Cold Storage	Potato		1	, , , ,
76	Kalimata Cold Storage	Potato		1	Packing, Ripening

					chamber, Grading, Pre- Cooling,
77	Guptipur Cold Storage	Potato		1	, , , ,
78	Shakti cold storage .	Potato	227000 bag		, , , ,
79	Tirupati cold storage (P) ltd.	Potato	391000 Packets		, , Grading, Pre-Cooling,
80	Moyangori Cold Storage Pvt. Ltd.	Potato			, , , ,
81	Jayanti Cold Storage	Potato			, , , ,

Source : Data compiled from National Horticulture Borad

Table A4 : Warehouse facility in the district

Sr.No	Details of warehouse	Capacity (MT)	Sector
1	Guskara RIDF Govt. Food Godown,Kamalnagar, Nadipatti, Ward No. 1, PO – Guskara, Pin – 713128	5000	Rice Under RIDF Scheme
2	Ketugram ,RIDF Govt. Food Godown,No.2, PO – Gangatikuri , Pin -713123	5000	
3	Memari RIDF Govt. Food Godown, Near Agricultural Firm, PO- Baghila, Dist. – Bardhaman , Pin – 713146	5000	
4	RIDF Govt. Food Godown, Galsi (Block -2), Shed III, PO + PS – Galsi Pin – 713406	5000	
5	RIDF Govt. Food Godown, Galsi (Block -2), Shed IV, PO + PS – Galsi, Pin – 713406	5000	
6	RIDF Govt. Food Godown, Galsi (Block -2), Shed V, PO + PS – Galsi, Pin – 713406	5000	
7	RIDF Govt. Food Godown, Galsi , Galsi (Block -2), Shed II , PO + PS – Galsi, Pin – 713406	5000	
8	RIDF Govt. Food Godown, Kalna, Litchutala, near B.D.O. office, kalna, Bardhaman – 713409	5000	

9	RIDF Govt. Food Godown, Mongolkot, near Agriculture farm, Natunhat School more, PO + PS - Mangolkot, Pin - 713147	5000	Rice Under RIDF Scheme		
10	RIDF Govt. Food Godown, Monteswar, Kusumgram, Agricultural farm, Dakbanglo More, PO- Kusumgram , Pin - 713145	5000			
11	RIDF Govt. Food Godown, near Agricultural Firm, College Gate no.01, PO- Nari, Pin - 713101	5000			
12	RIDF Govt. Food Godown, Near B.D.O. Office, PO - Bhatar, Pin - 713125	5000			
13	RIDF Govt. Food Godown, Purbasthali , Nimtala , PO- Samudragarh , Pin - 713519	5000			
14	RIDF Govt. Food Godown, Srikhanda Block-1, PO- Srikhanda, PS- Katwa, Pin - 713150	5000			
15	RIDF Govt. Food Godown,Galsi (Block -2); SHED I, PO + Vill - Galsi , Pin - 713406	5000			
16	CENTRAL WAREHOUSE BURDWAN I, SADARGHAT ROAD(OPPOSITE PNB), POST- SRIPALLY,, DIST-PURBA BARDHAMAN,	4742		Multipurpose registered under WRDA	
17	Central Warehouse Burdwan, ALISHA, HASIMUL, PO - JOTRAM,	16683			
18	Central Warehouse Sarul, VILL - URA, PO-PURBA BARDHAMAN,	28620			
19	Sonai Food Marketing Private Limited, Plot No. 2585, Khatian No.1748, J.L. No. 044, Mouza- Kansra, G.P.- Jamalpur -II, P.S.- Jamalpur,,	1196			
20	SUSAMA RANI KONER, VILL - GOPINATH BATI, PO-GONNA-DARIAPUR, P.S- AUSGRAM, BARDDHAMAN,, VILL - GOPINATH BATI, PO-GONNA-DARIAPUR, P.S- AUSGRAM, BARDDHAMAN,	6800			
21	Mahadebi Hired Godown Amila Bazar, P.O. Amila, P.S. Khandoghosh, Plot No. - 478, 479, 491, under Khatian No. 385, 386, 198, Mouza- Amila, J.L. No.- 93	3650			Multipurpose rented godown by State Warehousing Corporation
22	Biswajoy Dey Vill + Mouza + PO+PS. Ketugram, Katwa, Sub. Division, Dist. Burdwan	1050			
23	Smt.Sushma Rani Koner, Vill. Gopinath Bati, PO- Gonna-Dwariapur, PS- Aushgram Dist. Burdwan Pin- 713128	6817			

24	Sambhu Nath Agarwal Vill. & Mouza – Srirampur, P.O. & P.S. Kalna	5925	
----	--	------	--

Source: Data compiled from State Warehousing Corporation and Warehouse Regulatory & Development Authority

Table A5: Agricultural Production and Coverage Data

Sl. No.	Crop	Area (Hectare)	Production (Tonnes)	Yield (Ton./Ha.)
1	Potato	67,692.00	19,26,104.00	28.45
2	Rice	5,38,441.00	16,98,091.00	3.15
3	Jute	11,018.00	2,24,388.00	20.37
4	Sugarcane	1,615.00	1,22,971.00	76.14
5	Rapeseed & Mustard	31,279.00	33,160.00	1.06
6	Sesamum	23,066.00	20,236.00	0.88
7	Masoor	7,903.00	7,331.00	0.93
8	Wheat	1,312.00	3,689.00	2.81
9	Gram	1,861.00	2,264.00	1.22
10	Khesari	1,503.00	2,172.00	1.45
11	Groundnut	993.00	1,973.00	1.99
12	Mesta	95.00	1,346.00	14.17
13	Moong (Green Gram)	948.00	1,082.00	1.14
14	Maize	96.00	564.00	5.88
15	Peas & beans (Pulses)	219.00	270.00	1.23
16	Urad	231.00	168.00	0.73
17	Linseed	49.00	16.00	0.33
18	Arhar/Tur	8.00	13.00	1.63
19	Sunflower	2.00	2.00	1.00
	Total	6,88,331.00	40,45,840.00	164.56

Source: [Directorate of Economics and Statistics](#)

Table A6 MSME Clusters Data

Sl No.	Cluster Sector	Name of Cluster	Activity of Cluster	No. of Unit/Weaver/ Artisan	No. of Employees
1	Food Products & Processing	Ketugram Ii Jaggery Akher Gur Cluster	Production Of Akher Gur	18	400
2	Basic Metal & Alloy Industries	Knief And Seissors		20	40
3	Textiles & Readymade Garments	Nonarmath Uttar Hatsimla Handloom Cluster Development Society	Production Of Jamdani Saree, Tangail Varieties Saree Etc.	520	520
4	Textiles & Readymade Garments	Rail Bazar Samudraghar Handloom Cluster Development Society Ltd.	Production Of Jamdani Saree, Tangail Varieties Saree Etc.	500	500
5	Jute & Other Fibre Based Products	Mamudpur Sheep Wool Blanket Cluster	Blanket From Sheep Wool	25	160
6	Textiles & Readymade Garments	Dhatrigram Handloom Cluster Development Society	Production Of Jamdani Saree, Tangail Varieties Saree Etc.	505	505
7	Textiles & Readymade Garments	Dakshinbati Handloom Cluster Development Society	Production Of Jamdani Saree, Tangail Varieties Saree Etc.	512	512
8	Textiles & Readymade Garments	Badhagachi Msf Handloom Cluster Development Society	Production Of Jamdani Saree, Tangail Varieties Saree Etc.	504	504
9	Textiles & Readymade Garments	Gramkalna Satbaghi Handloom Cluster Development Society	Production Of Jamdani Saree, Tangail Varieties Saree Etc.	530	530
10	Textiles & Readymade Garments	Dakshin Dhatrigram Handloom Cluster Development Society	Production Of Jamdani Saree, Tangail Varieties Saree Etc.	520	520
11	Textiles & Readymade Garments	Stationpara Dhatrigram Handloom Cluster Development Society	Production Of Jamdani Saree, Tangail Varieties Saree Etc.	510	510
12				510	510

	Textiles & Readymade Garments	Dhatrigram Udbastu Handloom Cluster Development Society	Production Of Jamdani Saree,Tangail Varieties Saree Etc.		
13	Textiles & Readymade Garments	Ambika Handloom Cluster Development Society	Production Of Jamdani Saree,Tangail Varieties Saree Etc.	518	518
14	Textiles & Readymade Garments	Kushodanga Jewdhara Hl.Cl.Dev.Socy	Production Of Jamdani, Tangail Varity Saree Etc	560	560
15	Textiles & Readymade Garments	Purba Dhatrigram Handloom Cluster Development Society	Production Of Jamdani Saree,Tangail Varieties Saree Etc.	510	510
16	Textiles & Readymade Garments	Maa Bhabani Handloom Cluster Development Society	Production Of Jamdani Saree,Tangail Varieties Saree Etc.	570	570
17	Textiles & Readymade Garments	Natungram Handloom Co-Op.Society Ltd.	Production Of Jacquard Saree	1	130
18	Textiles & Readymade Garments	Maa Mahismardini Handloom Cluster Development Society	Production Of Jamdani Saree,Tangail Varieties Saree Etc.	521	521
19	Textiles & Readymade Garments	Nonarmath Vivekananda Handloom Cluster.	Production Of Jamdani Saree,Tangail Varieties Saree Etc.	500	500
20	Textiles & Readymade Garments	Ghoranash Handloom Co-Operative Society Ltd	Production Of Handloom Saree And Scarves	1	101
21	Textiles & Readymade Garments	Tamaghata Handloom Co-Operative Society Ltd	Production Of Jacquard Saree	1	400
22	Textiles & Readymade Garments	Lakshmipur Handloom Cluster Development Society	Project Running. Production Will Be Start After Completion Of Project.	1	505
23	Textiles & Readymade Garments	Saspur Handloom Cluster Development Society	Production Of Jamdani Saree,Tangail Varieties Saree Etc.	550	550
24	Textiles & Readymade Garments	Debipur Handloom Cluster Dev Socy	Production Of Saree,Dhuti, Stole Etc.	371	371
25				505	505

	Textiles & Readymade Garments	Badhagachi Swarajpur Dhatrigram Hl.Cl.Dev.Socy	Production Of Jamdani Saree,Tangail Varieties Saree Etc.		
26	Textiles & Readymade Garments	Gramkalna Dakshinpara Hl. Cl. Dev. Socy	Production Of Jamdani Saree,Tangail Varieties Saree Etc.	505	505
27	Textiles & Readymade Garments	Chanduli Handloom Cluster Development Society	Production Of Cotton Than And Scarves	1	432
28	Textiles & Readymade Garments	Srirampur Kundupara Handloom Cluster Dev Socy	Production Of Jamdani Saree,Tangail Varieties Saree Etc.	1	538
29	Textiles & Readymade Garments	Khanpur Handloom Cluster Development Society	Production Of Jamdani Saree,Tangail Varieties Saree Etc.	505	505
30	Textiles & Readymade Garments	Khes Cluster	Making Of Khes Product	300	300
31	Textiles & Readymade Garments	Bhedia Purbapara Janakalyan Swechhasevi Sangha	Mfg Of Kantha Stitch Items	412	412
32	Metal Fabrication & Furniture	Dariyapur Dokra Artisans Co-Operative Industrial Society Ltd.	Making Of Dokra Craft Items	166	166
33	Metal Fabrication & Furniture	Memari Cluster Steel Furniture Product Co-Operative Society Ltd	Steel Furniture Manufacturing	21	72
34	Textiles & Readymade Garments	Ranibandha Kakuria Handloom Cluster Development Society		505	505
35	Textiles & Readymade Garments	Paschim Nasaratpur Handloom Cluster Development Society	Production Of Jamdani Saree,Tangail Varieties Saree Etc.	520	520
36	Textiles & Readymade Garments	Maa Siddheswari Handloom Cluster Dev. Society	Production Of Jamdani Saree,Tangail Varieties Saree Etc.	511	511
37	Textiles & Readymade Garments	Purnalaxmi Tala Handloom Development Society	Production Of Jamdani Saree,Tangail Varieties Saree Etc.	518	518
38	Textiles & Readymade Garments	Schoolpara Handloom Cluster Development Society	Production Of Jamdani Saree,Tangail Varieties Saree Etc.	499	499

39	Textiles & Readymade Garments	Kalna-Ii Handloom Cluster Development Society	Production Of Jamdani Saree, Tangail Varieties Saree Etc.	505	505
40	Textiles & Readymade Garments	Madhya Dakshin Srirampur Handloom Cluster Development Society	Production Of Saree, Lungi	328	328
41	Textiles & Readymade Garments	Gopinathpur Madhyapara Handloom Cluster Development Society	Production Of Jamdani Saree, Tangail Varieties Saree Etc.	500	500
42	Textiles & Readymade Garments	Nandai Handloom Cluster Development Society	Production Of Jamdani, Tangail Varieties Saree Etc.	505	505
43	Textiles & Readymade Garments	Hatsimla Tant Shilpi Samabay Samity Limited	Production Of Jamdani Saree, Tangail Varieties Saree Etc.	100	100
44	Textiles & Readymade Garments	Uttar Goalpara Weavers Co-Operative Society Limited	Production Of Jamdani Saree, Tangail Varieties Saree Etc.	150	150
45	Textiles & Readymade Garments	Uttar Goara Tant Silpa Samabay Samity Ltd.	Production Of Jamdani Saree, Tangail Varieties Saree Etc.	100	100
46	Textiles & Readymade Garments	Samudragarh Weavers Co-Operative Society Ltd.	Production Of Jamdani Saree, Tangail Varieties Saree Etc.	101	101
47	Textiles & Readymade Garments	Gourangapara Handloom Cluster Development Society	Production Of Jamdani Saree, Tangail Varieties Saree Etc.	505	505
48	Textiles & Readymade Garments	Uttar Dhatrigram Weavers Co-Operative Society Ltd.	Production Of Jamdani Saree, Tangail Varieties Saree Etc.	160	160
49	Textiles & Readymade Garments	Nasaratpur Handloom Cluster Development Society	Production Of Jamdani Saree, Tangail Varieties Saree Etc.	350	350
50	Textiles & Readymade Garments	Satapati Malopara Handloom Cluster, Malopara	Production Of Jamdani Saree, Tangail Varieties Saree Etc.	342	342

Source: [Directorate of MSME](#), Govt. of West Bengal

Cluster Name	Technical Agency	Implementing Agency	Agency Name	No. of Artisans
Dokra Craft Cluster	EPCH	Swatirtha Charitable Trust	IIE	500
Coir Cluster	M/s. Foundation for MSME Clusters	M/s Panuhat Karmaudyog Welfare Society	Coir Board	600

TABLE A7 DISTRICT EXPORT DATA 24-25

ITCHS Code	Item_Desc.	Sum of Value (INR Billions)
10063010	Rice Parboiled	20.03
10063090	Rice Excptg Parboiled (Excl Basmati Rice)	9.27
10062000	Husked (Brown) Rice	4.04
23033000	Brewing Or Distilling Dregs And Waste	2.35
73259999	Other Cast Articles of Iron or Steel N.E.S	2.24
72023000	Ferro-Silico-Manganese	0.46
48051900	Other Fluting Paper	0.40
73259910	Other Cast Artcles of Iron Malleable	0.39
42022230	Jute Hand Bags/Shopping Bags.	0.27
48052400	Testliner(Recycled Liner Bord) of Wt<=150 G/M2	0.26

Source: Data compiled from [Ministry of Commerce and Industry Website](#)

TABLE A8 FGD REMARKS

Post FGD Report					
Section A					

Districts Covered		Date		Duration	
Purba Burdwan		28.07.25		2.00 - 4.00 PM	
No. of participants					
Total					
Entrepreneurs / Association/Cooperation/Chamber of commerce					
Trade Facilitation Institution					
Government Stakeholders					
IIFT Team Participant	5				
Mr. Kaustav Bhattacharyya	Ms. Rwitika Chakraborty				
Section B					
Products					
Salient Inputs from the FGD					
Products	Physical Infra Core	Physical Infrastructure Support	Soft Infrastructure	Others	Activities

			Requirement of Handholding		Standalone for SEFC - Morehandholding and reach
	Facilities for value addition of flower				to be included in ZEHAP for DPR
	Cold stoarge, packaging system and cold transportation facility for horticulture products				to be included in ZEHAP for DPR
	Packaging and cold staorage for vegetable				
			Financial help to Wig Cluster		Awareness of Financial schemes by SEFC &

					Awareness programme by Banks
			Marketing Assistance to Wig Cluster		Marketing expert to be assigned - to be included in ZEHAP
			Raw material bank - Association with net cluster - Karur Cluster, Tamil Nadu		To be included in ZEHAP. Guidance from CH(KR)
		Custom Unit in Postal Division with DNK			To be done by Indian Post will be added in ZEHAP
	Display Unit in Zori Hub Cluster				to be included in ZEHAP for DPR

