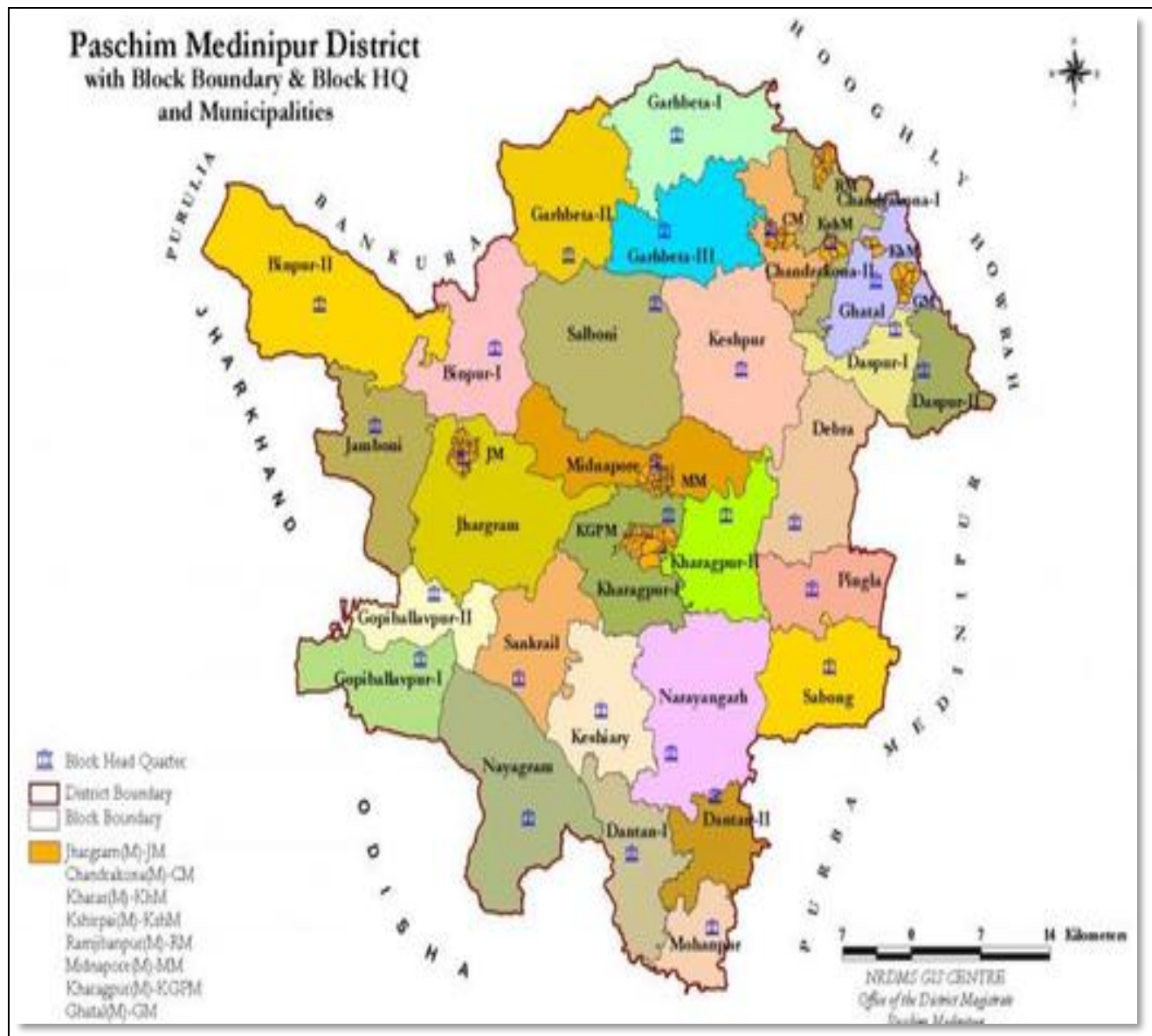


DISTRICT PROFILE

PASCHIM MEDINIPUR



CONTENT

1. INTRODUCTION

Paschim Medinipur is a prominent district located in the state of West Bengal, India. Formed after the bifurcation of the erstwhile undivided Medinipur district in 2002, it shares its borders with Bankura, Purulia, Jhargram, and the state of Odisha. It is the second-largest district in the state in terms of area (9,295.28 km²), after South 24-Parganas (9,960 km²). It is bounded by Jhargram district in the West and by the Mayurbhanj and Balasore District of Orissa in the south. To its eastern side is the Purba Medinipore, while the district Bankura lies to its North. The district headquarters is located in **Midnapore town**, a historical center known for its educational institutions and cultural heritage.

2. CLIMATIC CONDITIONS

Paschim Medinipur has a humid sub-tropical climate with hot, oppressive summers and moderately cold winters, characterized by high relative humidity and significant rainfall from the South-West monsoon. The climate varies from west to east, with drier, drought-prone areas on the lateritic uplands in the west and more fertile, marshy, and irrigated conditions in the alluvial plains to the east. The district experiences hot summers and moderately cold winters. The average annual temperature ranges from roughly 54°F to 98°F, rarely falling below 49°F or exceeding 104°F. The average annual rainfall is approximately 1626.8 mm, with about 80% of this coming from the South-West monsoon. Rainfall can vary from about 1295 mm to 1637 mm across the district.

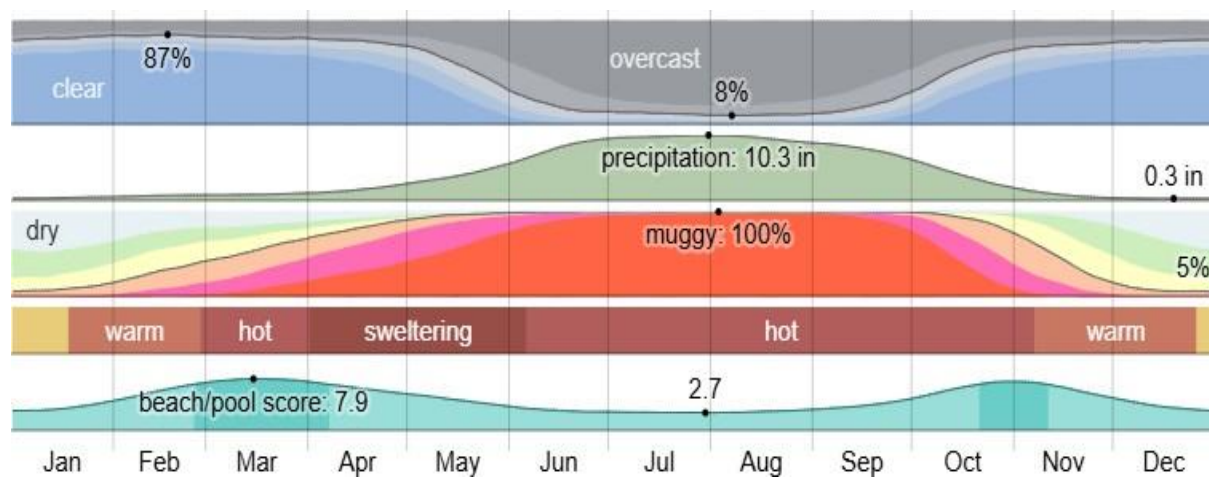


Fig 1 : Climatic Mapping of Paschim Medinipur
 Source: Weather Spark

3. ADMINISTRATIVE PROFILE

The district comprises three subdivisions: Kharagpur, Medinipur Sadar and Ghatal. Kharagpur subdivision consists of Kharagpur municipality and ten community development blocks. Medinipur Sadar subdivision consists of Midnapore municipality and six community development blocks. Ghatal subdivision consists of five municipalities and five community development blocks. Midnapore is the district headquarters. There are 28 police stations, 21 development blocks, 7 municipalities and 290 gram panchayats in this district. Other than municipality area, each subdivision contains community development blocks which in turn are divided into rural areas and census towns. In total there are 11 urban units: 7 municipalities and 4 census towns

The distribution of the administrative order has been detailed below in fig 2. The details of the same are given in the annexure (Ref: Table A1, A2, A3, in the Annexure section)

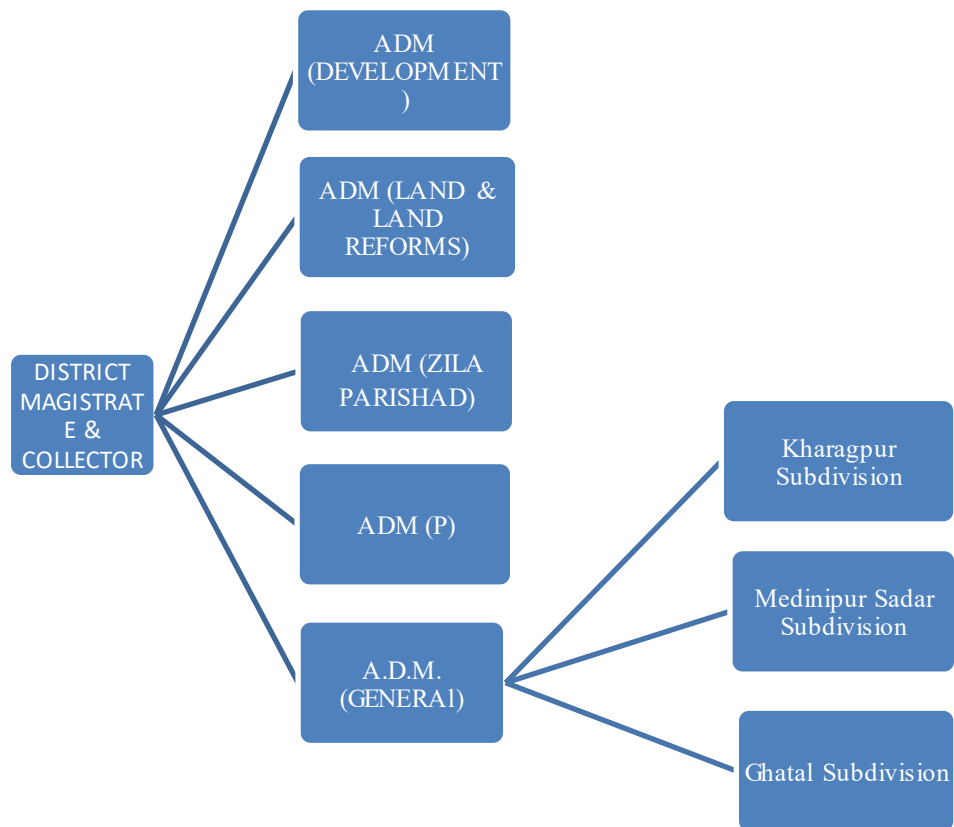


Fig 2: Administrative Flow of Paschim Medinipur

4. LOCATION AND GEOGRAPHY

Spanning across an expansive 9,345 sq km, the district is strategically positioned between 86.40°E – 87.52°E longitude and 21.47°N – 23.00° N latitude. The topographical features of the region reveal two distinct natural divisions, delineated by the intersecting NH 14 and NH 16 (formerly NH 60) from Bankura to Balasore. To the east of this thoroughfare lies fertile alluvial soil, creating a flat terrain, while to the west, the Chota Nagpur Plateau imparts undulating contours with infertile laterite rocks.

Natural Divisions:

The district is broadly divided by NH 14 and NH 16 (old NH 60), running from Bankura to Balasore:

East of the highway: Flat terrain with fertile alluvial soil.

West of the highway: Undulating terrain descending from the Chota Nagpur Plateau, with dry deciduous forests and infertile laterite soil.

Major Cities and Towns:

- District HQ: Midnapore
- Largest City: Kharagpur

Other key towns:

Salboni, Ghatal, Belda, Chandrakona, Ramjibanpur, Garbeta, Balichak, Dantan, Mohanpur, Keshiari, Keshpur, Narayangarh, Sabang, Daspur, Goaltore, Debra.

Forest: The woodland expanse in Paschim Medinipur district (prior to its division) extends over a vast 171,935 hectares, with protected zones encompassing 160,179.30 hectares and reserved areas spanning 6,182.34 hectares. The verdant tapestry hosts a diverse array of vegetation, including the majestic Sal, Teak, Babble, Maher, and Amla. The district is graced with extensive dense forests, primarily concentrated in the Jhargram, Garhbeta, Midnapore, Kharagpur, Jamboni, and Narayangarh C.D.

Blocks¹.

5. DEMOGRAPHY

According to the 2011 Census, Paschim Medinipur district is home to 5.91 million residents, making it West Bengal's second most populous district while maintaining a relatively low population density of 631 persons per square kilometer due to its expansive geographical area. The district recorded a 14.44% population growth during 2001-2011 and shows balanced gender demographics with 960 females per 1000 males. Educational indicators reveal significant progress, with literacy rates improving from 70.41% in 2001 to 79.04% in 2011, though a pronounced urban-rural divide persists with only 12.36% urbanization².

The demographic distribution of Paschim Medinipur is given by the following data:

Table: 1 Major Demographic Distribution of Paschim Medinipur

Parameters	Total	Rural	Urban
Number of Households	1301610	1142875	158735
Total Population (Persons)	5913457	5190771	722686
Total Population (Males)	3007885	2641721	366164
Total Population (Females)	2905572	2549050	356522
Literates (Persons)	4078412	3515817	562595
Literates (Males)	2266913	1967008	299905
Literates (Females)	1811499	1548809	262690
Total Workers (Persons)	2509159	2257799	251360
Total Workers (Males)	1757358	1557586	199772
Total Workers (Females)	751801	700213	51588
Agricultural Labourers	1105201	1088006	17195
Workers in Household Industries	142602	135032	7570

¹ Compiled from the District Survey Report of Paschim Medinipur by Department of Industry, Commerce & Enterprise, Govt of West Bengal

² Census data, 2011

6. LOGISTIC INFRASTRUCTURE PROFILE

Paschim Medinipur district, with Medinipur as its administrative headquarters and Kharagpur as its largest city, encompasses several important urban centers including Jhargram, Ghatal, Chandrakona, Dantan, and numerous other towns. The district enjoys excellent connectivity through a well-developed transport infrastructure, featuring major national highways like NH-60 (connecting Kharagpur to Balasore) and NH-116 (linking to Howrah). Its rail network, served by the South Eastern Railway, boasts significant junctions at Kharagpur - home to one of India's largest railway yards - and Midnapore. While currently dependent on Kolkata's international airport located 170 km away, the district anticipates improved air connectivity with the revival of Kharagpur's domestic airport. This comprehensive transport network solidifies Paschim Medinipur's position as a crucial economic and logistical corridor between West Bengal and the neighboring states of Jharkhand and Odisha, with Kharagpur particularly emerging as a key industrial and transportation hub.

Road Transport

Paschim Medinipur district has a robust road transport network, serving as a vital link between major cities in West Bengal and neighboring states. While major national and state highways provide good connectivity, the road network, particularly in rural areas, faces challenges related to congestion, road conditions, and maintenance.

Key road network

- ***National highways***

Paschim Medinipur is crisscrossed by several national highways that facilitate inter-district and inter-state movement of goods and passengers.

- NH 16 (formerly NH 6): This major highway passes through Kharagpur and connects Chennai and Kolkata.
- NH 14 (formerly NH 60): This highway runs through Kharagpur, Midnapore town, and passes through different parts of the district.

- NH 116A: Connects various areas within the district.

- ***State highways***

The district's state highway network ensures connectivity to various sub-divisions, blocks, and neighboring districts.

- SH 4: This highway passes through Chandrakona, Ghatal, and other areas within the district.
- SH 5: Connects Kharagpur and Belda in the district.

The list of the Roadways is presented in Annexure (Ref: table A 4, A5, in the Annexure section)³.

Rail Transport

Paschim Medinipur district has a robust and strategic railway network, primarily managed by the South Eastern Railway zone. The railway system is vital for both passenger and freight transport, connecting major urban centers within the district and providing crucial links to the rest of India.

Key railway lines

- Howrah–Kharagpur–Midnapore line: This is a major corridor and a key suburban section of the Kolkata Suburban Railway network.
 - The line is crucial for daily commuters traveling between Midnapore, Kharagpur, and Kolkata.
 - Sections of this line are heavily utilized, with multiple tracks to accommodate both suburban and express trains.
- Kharagpur–Balasore–Chennai main line: Kharagpur is a major junction on this line, linking West Bengal to southern states.

³ Data compiled from the official website of PWD and West Bengal Traffic Police

- Kharagpur–Tatanagar–Mumbai main line: Another important route, this line connects the region to central and western India.
- Adra–Midnapore–Howrah line: This line, under the Adra railway division, serves areas like Garhbeta, Salboni, and other parts of Paschim Medinipur, connecting them to major hubs like Kharagpur, Adra, and Howrah.
- Kharagpur–Haldia line: While branching off towards the adjacent district of Purba Medinipur, this line is critical for freight movement from the Haldia Port, which has significant implications for the wider region⁴.

Major railway stations

- Kharagpur Junction (KGP) : The largest and most important railway station in the district, and one of the busiest in the South Eastern Railway zone. It is a major junction connecting multiple trunk routes. The Kharagpur workshop, a major facility for South Eastern Railways, is also located here.
- Midnapore railway station (MDN) : As the district headquarters, this station is a vital hub for passenger services, connecting the town to other parts of the district and beyond.
- Jhargram railway station (JGM) : An important station located in the western part of the district, serving the Jhargram sub-division.
- Other key stations: The district has numerous other stations, including Garhbeta (GBA), Salboni (SLB), and Narayangarh (NYA), which serve local communities and link to the broader network⁵.

Freight transport

Freight transport in Paschim Medinipur relies heavily on a robust network of railways and national highways, with the strategic location of Kharagpur Junction serving as a key logistical hub. The district's proximity to the Haldia Port and its connection to the rest of

⁴ Data compiled from South Eastern Railway Zone

⁵ Data compiled from Indian Railways

West Bengal and other states via major transport corridors makes it a significant area for the movement of goods.

- Rail freight
 - Kharagpur Division: The Kharagpur Division of the South Eastern Railway handles a significant volume of freight traffic. During the COVID-19 pandemic, the Kharagpur Division recorded a record-high parcel cargo loading, demonstrating its capacity for large-scale freight operations.
 - Connectivity: The district's rail network, including the Kharagpur-Balasore-Chennai and Kharagpur-Tatanagar-Mumbai main lines, enables the efficient transport of heavy cargo over long distances. The rail cargo service is considered a dependable and economical option for businesses in the region.
 - Logistics services: Several logistics companies in Paschim Medinipur offer rail cargo services, managing shipments and ensuring the safe and timely delivery of goods for businesses of all sizes⁶.
- Road freight
 - National highways: The district is served by major national highways, including NH 16 (Chennai-Kolkata) and NH 14, providing excellent road connectivity for freight movement.
 - Transport hubs: Companies like TCI Freight operate branches in Kharagpur, leveraging the area's strong transport infrastructure. Other local and regional transport companies also service the district and connect it to various parts of West Bengal and neighboring states.
 - Logistics challenges: Despite the good highway connectivity, the road transport sector in West Bengal, including Paschim Medinipur, faces challenges such as high freight costs, fragmented infrastructure, and regulatory hurdles. The state government's Logistics Policy 2023 aims to address these issues⁷.

⁶ Data compiled from South Eastern Railways & Indian Railways

⁷ West Bengal State Logistic Policy 2023

Water Transport

Paschim Medinipur, though located inland, is endowed with important river systems that provide potential for inland water transport and business linkages. The key rivers flowing through the district are the **Kangsabati (Kasai), Subarnarekha, Silabati (Silai), Shilabati, and Kaliaghai**, along with their tributaries. These rivers flow eastwards or southeastwards and ultimately meet larger river systems that connect to the Bay of Bengal through adjoining districts like Purba Medinipur.

The **Kangsabati River**, which passes through Midnapore town, plays a central role in the district's water system and is a tributary of the Haldi River that eventually drains into the Hooghly near Haldia. The Subarnarekha River forms part of the southwestern boundary of the district before entering Balasore (Odisha) and the Bay of Bengal.

While Paschim Medinipur does not have a major port installation of its own, its **strategic proximity to the Haldia Dock Complex (HDC)** in neighboring Purba Medinipur provides opportunities for water-based trade. HDC, under the Shyama Prasad Mookerjee Port, Kolkata, specializes in handling dry bulk and liquid bulk cargo and connects to the **National Waterway system**. Paschim Medinipur's river routes, particularly through the Kangsabati-Haldi linkage, create potential connectivity to this network⁸.

Air Transport

Paschim Medinipur currently lacks a fully operational airport, though the **Kharagpur Airstrip** (domestic) is being developed for future civilian use. The proposed development of Kharagpur Airport is expected to significantly improve regional connectivity. The proposed development of Kharagpur Airport is expected to significantly improve regional connectivity.

Nearby airports

- Netaji Subhash Chandra Bose International Airport (CCU), Kolkata : This is the primary airport serving Paschim Medinipur, located around 130–140 km away. It provides excellent connectivity for both domestic and international travel and cargo.

⁸ Data Compiled from Haldia Dock Complex and Haldia Dock Authority

- Kazi Nazrul Islam Airport (Durgapur) : Located approximately 200 km from Paschim Medinipur, this regional airport offers limited flights but can be an option for certain businesses

Export infrastructure at [Netaji Subhash Chandra Bose International Airport \(CCU\), Kolkata](#)

Netaji Subhas Chandra Bose International Airport (CCU), Kolkata, boasts a well-developed International Air Cargo Terminal, essential for facilitating exports from the region and connecting businesses to global markets.

Here's a breakdown of its key features: International air cargo terminal

- Established Expertise:
Kolkata's International Air Cargo Terminal holds the distinction of being the first of its kind in India, commissioned in 1975.
- Strategic Location: It's situated conveniently, just half a kilometer north of the international terminal building, with robust road infrastructure for seamless cargo movement.
- Extensive Facilities:
 - Covered Area: The terminal encompasses a vast 21,906 square meters of covered space, [according to www.nscbiairport.com](http://www.nscbiairport.com).
 - Capacity: It has an impressive annual holding capacity of 120,000 metric tons, including transshipment cargo.
 - Aircraft Accommodation: Four dedicated parking bays cater to freighter aircraft, accommodating large models like the Boeing 747.
- Integrated Services: The Airports Authority of India (AAI) has meticulously designed the terminal to offer a comprehensive range of facilities for efficient cargo processing, comparable to international standards.
- One-Stop Shop: All major airlines and regulatory agencies involved in pre-shipment formalities and clearance are conveniently housed under one roof, streamlining the export process.
- Export Wing: A dedicated export wing within the cargo terminal provides a covered area of 8,516 square meters, including an Elevated Transfer Vehicle (ETV) area of 1,333 square meters.
- Special Cargo Handling:

- Cold Storage: Dedicated facilities with three chambers and controlled temperatures cater to temperature-sensitive cargo like pharmaceuticals, vegetables, fruits, and meat.
- Strong Room: A secure strong room handles valuable cargo.
- Hazardous Cargo Shed: A designated shed safely stores and manages hazardous cargo.
- Transshipment Shed: Facilitates efficient transfer of goods between flights.

General facilities

- Integrated Cargo Management System (ICMS): An online system streamlines data processing and ensures efficient cargo management.
- Equipment: Forklifts, high reach takers, electronic and mechanical weighing machines, cargo trolleys, and power pallet trucks enhance operational efficiency.
- Parking & Docking: Dedicated idle Unit Load Device (ULD) parking areas and 16 truck docks ensure smooth flow of vehicles and cargo handling.
- Disposal Unit: Facilitates the disposal of unclaimed or uncleared cargo.

Connectivity and reach

- Kolkata International Air Cargo Terminal serves as a critical hub for air cargo services across the entire Eastern and Northeastern regions of India.
- It facilitates international freight transactions with six major global market regions, including South-Asian, South-East Asian Countries, Western Countries, Middle-East Countries, and Central Asia.

In summary, Kolkata Airport's robust export infrastructure, including a well-equipped and strategically located cargo terminal, efficient processing systems, and dedicated facilities for various types of cargo, positions it as a vital gateway for businesses looking to export goods from Eastern India to the global marketplace⁹.

7. EXPORT INFRASTRUCTURE

Paschim Medinipur's export infrastructure is centered around robust rail and road networks that provide critical connectivity to the nearby Haldia Port in Purba Medinipur and the port of Kolkata.

⁹ Data Compiled from Airport Authority of India

This land-based transport system is supported by West Bengal's broader logistics policies, though the district itself lacks significant inland waterways for major commercial transport.

Land Custom Stations

Paschim Medinipur does not have its own Land Custom Station (LCS). Being an inland district in West Bengal, its external trade depends on a robust road and rail network to connect to ports and land customs stations in other parts of the state.

Nearest land customs stations

Exporters and importers in Paschim Medinipur utilize land customs stations located in other districts of West Bengal that border neighboring countries like Bangladesh.

- Petrapole LCS: Located in North 24 Parganas, Petrapole is the most important land port on the India-Bangladesh border and the largest LCS in Asia. It is the primary gateway for trade with Bangladesh for the entire region.
- Mahadipur LCS: Situated in Malda district, this is another significant LCS for trade with Bangladesh.
- Hilli LCS: Located in Dakshin Dinajpur, Hilli is a key LCS for northern West Bengal and also serves as a point of trade with Bangladesh¹⁰.

Integrated Check posts

Paschim Medinipur does not have any Integrated Check Posts (ICPs) or direct international borders. As an inland district in West Bengal, it relies on ICPs and ports located in neighboring districts for cross-border trade. The district's strategic transport network, however, plays a vital role in connecting local exporters to these crucial trade gateways.

Nearest integrated check posts (ICPs)

Exporters and importers from Paschim Medinipur utilize the following major ICPs for trade with neighboring countries, primarily Bangladesh and Nepal:

¹⁰ Data compiled from Kolkata Customs and Land Port Authority of India

- **Petrapole ICP:** Located in North 24 Parganas, this is the largest land port in South Asia and the main gateway for trade with Bangladesh from Southern Bengal. It handles a significant portion of the trade and passenger movement between India and Bangladesh.
- **Other ICPs in West Bengal:** Several other ICPs are operational or in development in other border districts, including Ghojadanga, Changrabandha, Fulbari, and Hilli, which facilitate trade with Bangladesh.

Cold Storages

Paschim Medinipur has a significant number of cold storage facilities, reflecting its strong agricultural base, particularly in potato cultivation. With 47 cold storage units, the district ranks as one of the top locations in West Bengal for storage capacity.

The cold storage in Paschim Medinipur is majorly focused on potatoes: A vast majority of the district's cold storage facilities are dedicated to storing potatoes. This supports local farmers and traders by preserving the crop after harvest and regulating its release into the market throughout the year. (Refer Table A6 in Annexure)

Warehouse

Paschim Medinipur, leveraging its strong agricultural sector and strategic location near major transport corridors, has a well-established network of warehouse and cold storage facilities. The facilities cater to both agricultural and industrial needs, serving as crucial links in the supply chain for local industries and export-oriented businesses.

The district is dominated by a number of private warehouses operate in the district, offering various services to industrial goods and agricultural products. Major industrial towns like Kharagpur have multiple private facilities.

There are around 6 government warehouses under state and central government with more than 73 thousand metric tonne capacity. (Refer Table A7 in the Annexure).

8. AGRICULTURAL PROFILE

As collected from the data of Directorate of Economics & Statistics, in year 2023-24, Paschim Medinipur has a gross cropped area (GCA) of 938.64 thousand ha, with 558.70 thousand ha net sown area and a cropping intensity of 168%. About 428.12 thousand ha is irrigated, mainly through canals (27%) and lift irrigation (32%), while 510.52 thousand ha remains rainfed. The district receives an average annual rainfall of 1569.5 mm, mostly during the South-West monsoon (June - September). Paschim Medinipur agriculture is characterized by the dominance of rice and potato, supported by oilseeds, pulses, and cash crops. During the reported year, rice was cultivated over 5,96,968 hectares, producing 19,70,165 tonnes at an average yield of 3.3 tonnes/ha, making it the staple crop of the district. Potato is another major crop, grown on 71,974 hectares, with a very high productivity of 26.78 tonnes/ha, resulting in 19,27,186 tonnes of production.

Other important crops include sugarcane (1,29,669 tonnes), sesamum (67,561 tonnes), jute (63,014 tonnes), and groundnut (35,725 tonnes). Oilseeds such as rapeseed & mustard (16,550 tonnes) also contribute to the district's crop economy¹¹.

Among pulses, masoor, moong, gram, peas & beans, urad, arhar/tur, khesari, and horse-gram are cultivated, though in smaller quantities. Maize and wheat are also grown but on a limited scale.

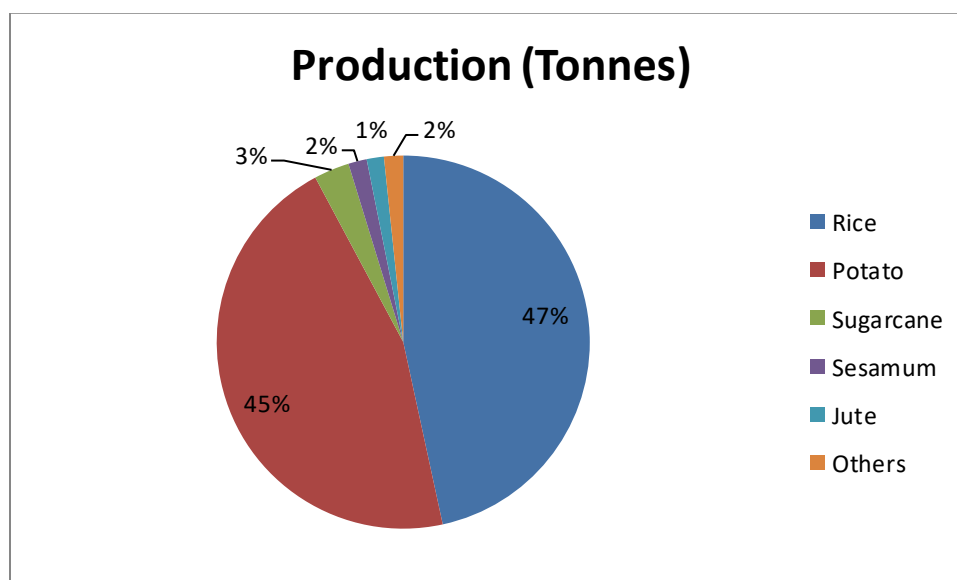


Fig 3: Agricultural Production Share in Paschim Medinipur

¹¹ Data compiled from Directorate of Economics & Statistics

From the above Fig 3, we can see that in this district, rice accounts for the largest share of agricultural production, contributing 47% of the total. It covers 596968 Hectares of land for cultivation. Potato is the second major crop, making up 46% of the production, covering land of 71974 Hectares. Apart from these, several other crops are also cultivated in smaller proportions. These are Sugarcane, Sesamum, Jute, Groundnut, Rapeseeds & Mustard, Maize, Masoor, Moong (green gram), Wheat, Khesari, Peas & Beans (Pulses), Gram, Urad, Arhar/Tur, Horse-gram etc. The detailed Data of agricultural production is reported in the annexure (Ref: Table A 8, in the annexure section)

Horticulture Profile of the District

Paschim Medinipur district is known for its diverse and flourishing horticultural practices. The region's favorable climate and fertile soil support the cultivation of a variety of fruits, vegetables, flowers, and spices. Major horticultural crops grown here include mango, guava, banana, papaya, and various citrus fruits. Vegetable cultivation is also widespread, with crops like tomato, brinjal, cucumber, and leafy greens playing a significant role in local agriculture. The district has seen increased focus on horticulture as a means to boost farmers' income and diversify agricultural production¹².

Vegetables Production:

Vegetables occupy the largest share in horticulture. During 2023–24, a total of 47.597 thousand hectares was under vegetable cultivation, with a production of 737.721 thousand MT. Leading vegetables include cabbage (128.799 thousand MT), brinjal (125.303 thousand MT), cauliflower (106.722 thousand MT), tomato (84.560 thousand MT), and onion (54.414 thousand MT). Other significant crops are ladies finger, cucurbits, pumpkin, watermelon, radish, yam, cucumber, arum, pointed gourd, bottle gourd, and sweet potato, along with smaller contributions from carrot, beans, peas, chili, and capsicum. This wide range of vegetables ensures year-round supply and contributes to both household consumption and commercial markets.¹³ (Refer Table A9 in the Annexure)

Fruit Production:

¹² Directorate of Horticulture, Govt of West Bengal

¹³ Directorate of Horticulture, Govt of West Bengal

During 2023–24, the district recorded a total fruit cultivation area of 10.873 thousand hectares, yielding 117.465 thousand metric tonnes of fruits. Among individual fruits, banana occupied 1.599 thousand hectares with the highest production of 33.120 thousand MT, followed closely by mango with 31.257 thousand MT from 4.712 thousand hectares. Other major fruits include guava (15.694 thousand MT), papaya (13.499 thousand MT), and jackfruit (11.379 thousand MT). This reflects the district's diverse fruit basket and its potential in both domestic consumption and marketable surplus¹⁴.(Refer Table A10 in the Annexure)

Flower Production:

Paschim Medinipur also plays a vital role in the floriculture sector of West Bengal. In 2023–24, a total of 4.207 thousand hectares was under flower cultivation. The district produced 66.016 crore cut flowers and 9.389 thousand MT of loose flowers. Among cut flowers, tuberose (32.059 crore sticks) and rose (28.992 crore sticks) are the leading contributors. In loose flowers, marigold dominated production with 7.828 thousand MT, followed by chrysanthemum and gladiolus¹⁵. (Refer Table A11 in the Annexure)

9. INDUSTRIAL SCENARIO OF PASCHIM MEDINIPUR DISTRICT:

Paschim Medinipur's economy features industries focused on handicrafts, including conch shell and patachitra, along with manufacturing in areas like machinery and steel, centered around the Vidyasagar Industrial Park in Kharagpur. The region also has strong agricultural and food processing sectors, with clusters of micro and small enterprises involved in food processing, and is supported by a network of village and handicraft industries.

Key Industrial Sectors and Clusters

- **Kharagpur Industrial Park** Kharagpur Industrial Park is one of the important industrial hubs in Paschim Medinipur district, West Bengal. The park has a total land area of 257 acres. At present, the park houses 28 units. reflecting its growing importance as a center of

¹⁴ Directorate of Horticulture, Govt of West Bengal

¹⁵ Directorate of Horticulture, Govt of West Bengal

industrial activity. Some prominent industrial units are The Tata Iron & Steel Company Limited - Bearing Manufacturing Division, Flender Ltd. producing Industrial Gears, Century Extrusions Ltd. producing Structural Aluminum Sections and Japfa Comfed India Ltd., producing Poultry & cattle feed.

The lease premium (rates in Rupees per acre) is 46.92 lacs, making it an attractive investment destination for medium and large industries. The park has already drawn significant industrial investment, amounting to nearly Rupees 632 crore. 7 Units employing more than 100 people, 9 units more than 10 crore investment¹⁶.

- **Vidyasagar Industrial Park**

An expansive 1,167-acre park that hosts major companies. The region hosts a dynamic mix of industries across key sectors:

Engineering & Manufacturing: Leading firms in construction machinery, engineering services, industrial components, and induction technology drive infrastructure and industrial growth.

Agro & Food Processing: Major players in food products, animal feed, crop protection, and seeds support the agro-economy and nutrition sector.

Energy & Chemicals: Presence of a major oil corporation and companies producing specialty chemicals and composites ensures strong support for manufacturing and construction.

Metallurgy & Allied: Metallurgical units and metal processing firms add to the region's industrial strength.

Together, these industries contribute to employment, innovation, and sustained regional development¹⁷.

- **Salboni Industrial Park**

A large 4,300-acre industrial park in Salboni is being developed with major investment from the JSW Group. The projects within this park focus on:

¹⁶ Data compiled from WBIIDC

¹⁷ Data compiled from WBIDC

Cement manufacturing, Paint production, Steel production and Solar power units¹⁸

- **MSME Cluster:**

Micro, small and medium Enterprises (MSMEs) form the backbone of the district's economy. Contributing significantly to Industrial growth, employment generation and inclusive development. The sector comprises diverse clusters such as handloom, wooden furniture, copper ornaments and steel fabrication, which reflect both traditional craftsmanship and modern industrial skill. MSMEs not only provide livelihood opportunities, especially in rural and semi-urban areas, but also support entrepreneurship, innovation and value addition in local industries. (Refer Table A12 in the Annexure)

- **Steel Fabrication Sector**

Steel fabrication cluster is an important industrial segment that supports various sectors such as construction, engineering, infrastructure and manufacturing. Steel fabrication, Garbeta – II and Narayangarh steel fabrication around 97 units are there which gives and engages 3455 labour force.

- **Wooden Furniture Sector**

The wooden furniture cluster is known for its traditional craftsmanship and modern design skill. It produces a wide range of household and office furniture. The cluster supports many small scale units, providing livelihood to local artisans and carpenters. Ranisarai wooden furniture cluster in Narayangarh and wooden furniture, Balarampur, Kharagpur – II. Total 45 units engaging 142 people.

- **Copper Ornament Sector**

Copper ornament cluster is renowned for its traditional artistry in crafting ornaments with cultural and aesthetic value. The cluster sustains age – old skill passed down through generations, producing items that are popular in local as well as regional markets. Daspur copper ornament cluster in Daspur – II 44 units. It provides employment to artisans and supports the preservation of cultural heritage while contributing to the local economy

- **Handloom Sector**

¹⁸ Data compiled from JSW Industrial Park

The handloom cluster plays a significant role in preserving traditional weaving practices while supporting the livelihoods of artisans. The two handloom clusters are Vidyasagar handloom cluster and Shyamsundarpur handloom cluster under MSME department 2 units and generating 543 nos of employment.

- **Handicraft Sector**

Craft-based industries play an equally vital role. Patachitra painting in Pingla sustains 250 artisans, while bamboo crafts in Sabang provide livelihoods to 100 people. The Mat weaving cluster in Sabang stands out with 9 units and 930 employees, indicating its large-scale social and economic importance.

The district is known for its traditional handicrafts, which are supported by government-promoted clusters and cooperatives.

- Patachitra: Narajole is home to a traditional Patachitra cluster, famous for its scroll painting folk art.
- Madur (mat) weaving: The Sabang region is known for its traditional mat weaving cluster. The Mat Craft Cluster is a SFURTI Cluster implemented by Child and Social Welfare Society which gives livelihood to around 500 employees.
- Other crafts: Include conch shell products and copper ornaments.
- Small and medium enterprises (MSMEs): Thousands of MSMEs in the manufacturing and service sectors operate in the district. The District Industries Centre assists with permits, loans, and marketing¹⁹.

10.BANKING SECTOR:

Paschim Medinipur has a strong financial network with 19 commercial banks, 1 RRB (BGVB), and 5 cooperative banks, supported by 377 branches and 402 ATMs (as on 31 March 2023).

¹⁹ Directorate of MSME, Govt of West Bengal

Deposits grew by 9.41% to ₹28,951.84 crore, while loans increased by 14.95% to ₹14,280.12 crore, of which 85.95% were priority sector advances.

The Credit Deposit (CD) ratio improved to 49.32% in 2023-24 but remains below the RBI benchmark of 60%, indicating untapped credit potential. Cooperative banks continue to face imbalances and NPAs, though efforts like PACS computerisation and NABARD-led financial literacy initiatives are ongoing.

The district also has 480 PACS, 1 Small Finance Bank (Ujjivan), 1508 Banking Correspondents, and Airtel Payments Bank services. Additionally, one RSETI (managed by Indian Bank) provides regular skill training to unemployed youth, though relocation to Midnapore is pending for better accessibility. (Refer Table A13 in the Annexure)

11. ODOP SECTOR OF THE DISTRICT

From the above-mentioned industries and sectors of production, the following have been chosen to be the ODOP sectors. Patachitra is one of the three prominent ODOP products of Paschim Medinipur district and holds the prestigious GI (Geographical Indication) tag. Patachitra style of painting is one of the oldest and most popular art forms of Bengal. The subjects or themes are chosen from story of ancient god and goddesses and also modern trends of civilization or social problems. The Patachitra are narrative in style and are thus accompanied by song. Natural colours are used in painting²⁰.

²⁰ IPR – GI Registry



Fig 4: ODO details of the district

12.EXPORT PROSPECTS AND POTENTIALITY OF THE DISTRICT

Paschim Medinipur 2022-23 to 2024-25, exports have declined by -51.64%, indicating a significant fall in the district's export performance. The **total export of Paschim Medinipur in 2024-25 stands at Rs. 13,78,91.3 lakh (Rs. 13,789 crore)**, driven by a diverse range of products such as Human Hair, Rice, Organic Chemicals, Ferro-Silico-Manganese, Spun Pipes, Iron & Steel Castings, Machinery, and Automotive Components.

In 2024-25, paschim medinipur's exports reached a diverse basket of products. The largest contributor was Organic Chemicals – Linear Alkylbenzenesulphonic Acids HS Code: 34023100 28.8% followed by Human Hair (Dressed or Worked) HS Code: 67030010 at 18.2% and Ferro-Silico-Manganese HS Code: 72023000 at 14.5%. industrial products such as Spun Pipes HS Code: 73030030 contributing 10.8% and Mounted Brake Linings HS Code: 87083000 contributing 9.0% also made significant contributions.

Other important items include Human Hair (Unworked) HS Code: 5010010 at 6.1%, Machinery with revolving super structure HS Code: 84295200 5.3% and Rice (Parboiled and Non-Parboiled) – Together HS Codes: 10063010 & 10063090, contributing 5.5% . export Other Cast Articles of Iron or Steel (HS Code: 73259999), contributing 2.4%.

Overall, the district’s exports are dominated by chemicals, hair and industrial products, which together account for nearly 87% of the total export value, while agriculture – based export like rice play a smaller but notable role. (Refer Table A14 in the Annexure)

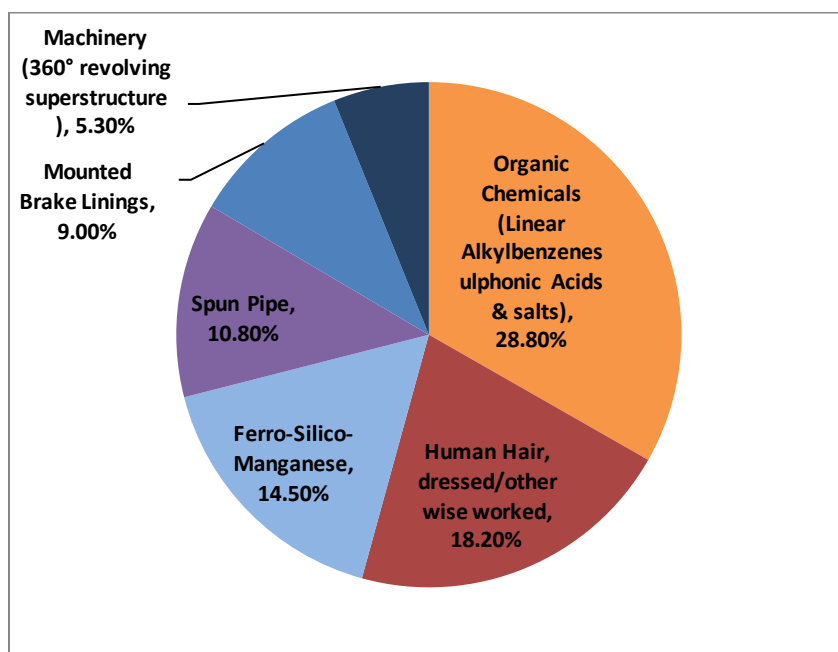


Fig 5 : Sector Contribution in Paschim Medinipur Exports

Source : Data compiled from the Dashboard of Ministry of Commerce & Industry, Govt of India

On analysing the current export profile of the district and comparing the same with the India’s export trend, it has been found that, except for unworked human hair (HS Code 05010010) all the product of interest of Paschim Medinipur are having a positive growing market, especially for products like Rice , Dressed Human Hair, Spun pie, Other Cast articles of iron , machinery and mounted brakes. This is because, all these products are having good positive world import growth in last five years ending 2024. For products like machinery and mounted brakes (HS Codes 84295200 and HS Code 8708300), India ‘s export rank in world market is around 11 which means India is lagging behind in the world competition. However, in these five years India has shown a remarkable growth in exporting these products by 34% and 18% respectively. On the other hand, for the unworked human hair, though India has shown a remarkable growth of 177%, the world import has fallen sharply by 66% in the time period 2020-2024. There is a positive scope of parboiled rice in the world market. Analysing the market it has been seen that there are many demanding importing markets which are not in top five target market list of India. Hence India

should tap more the markets which have a higher demand than what India is supplying. (Refer Table 2 below).

Table 2 : Export Potentiality Analysis of Paschim Medinipur

Export Status	HS Code	Product Details	Exported value in 2020	Exported value in 2021	Exported value in 2022	Exported value in 2023	Exported value in 2024	Export growth of India in five years (in %)	World Import Growth of the sector @ 6 digit in five years (in %)	Top five importers of India	Top ten importer of the sector @ 6 digit in world market	India's rank in world exporter list of the sector
Currently exporting from the district	05010010	Human Hair, Unworked; Whether Or Not Washed Or Scoured	10,544	139,685	128,604	179,441	187,839	177	-66	Myanmar, Bangladesh, Viet Nam, Spain, Sweden,	Myanmar, Austria, Italy, Israel, Viet Nam, Bangladesh, Sweden, Korea, United Kingdom, Poland	1
	10063010	Rice Parboiled	1,807,787	2,965,216	2,769,668	3,151,222	3,876,450	114.43	47	Benin, Guinea, Cote D'Ivoire, Togo, Somalia	Indonesia, Philippines, Saudi Arabia, Iraq, USA, Malaysia, Côte d'Ivoire, Iran, Islamic Republic of, United Arab Emirates, Benin	1
	10063090	Rice Except Parboiled (Excl Basmati Rice)	1,333,614	1,971,926	2,123,723	1,350,738	1,148,999	-13.84	47	Cameroon, Viet Nam, Malaysia, Kenya, Guinea	Indonesia, Philippines, Saudi Arabia, Iraq, USA, Malaysia, Côte d'Ivoire, Iran, Islamic Republic of, United Arab Emirates, Benin	1

34023100	Linear Alkylbenzenesulphonic Acids And Their Salts (Anionic Organic Surface Active Agents, W/N Put Up For Retail Sale)	0	0	71,107	134,432	151,723	10	8	Bangladesh, Brazil, USA, Sri Lanka, Philippines, UAE	France, USA, China, Poland, Canada, Brazil, Germany, Spain, Netherlands, Viet Nam	5
67030010	Human Hair Dressed Or Otherwise Worked	299,705	603,866	479,050	551,504	583,039	13	26	China, Viet Nam, USA, Paraguay, Tunisia	China, Korea, Viet Nam, USA, Israel, Indonesia, United Kingdom, Germany, Italy, Bangladesh, Hongkong	1
72023000	Ferro-Silico-Manganese	603,374	1,276,572	1,601,214	1,077,310	1,021,844	9	2	Japan, Egypt, UAE, Italy, Taipei Chinese	USA, Turkiye, Japan, Italy, Germany, Korea, Indonesia, Egypt, UAE, Taipei, Netherlands	1
73030030	Spun Pipe	126,895	151,473	180,653	187,925	137,228	8.7	12.93	Bahrain, United Kingdom, Italy, France, Singapore, Morocco	Italy, Indonesia, France, Kuwait, Germany, United Kingdom, Egypt, Iraq, Canada, Switzerland	3
73259999	Other Cast Articles Of Iron Or Steel N.E.S	215,983	291,954	269,300	233,340	244,215	13.48	28.52	USA, Italy, Germany, Spain, United Kingdom	Italy, Germany, USA, France, Poland, United Kingdom, Netherlands, Spain, Czech Republic Austria	1
84295200	Mchnry Wth A 360 Dgr. Rvlng Supr-Strctr	139,393	340,793	363,163	425,273	536,619	34	13	Ghana, UAE, South Africa, Saudi Arabia, Belgium	USA, Belgium, Canada, Indonesia, Germany, United Kingdom, Russian Federation, Italy, Netherlands, Australia	11
87083000	Mounted Brake Linings	413,922	611,822	697,614	746,995	849,344	18	10	USA, Germany, Mexico, Türkiye, United Kingdom	USA, Germany, Mexico, China, Canada, Poland, France, United Kingdom. Czech Republic, Italy	12

Source : Trade Map

13.SWOT ANALYSIS

Studying and examining the different aspects of the district and collecting data from the primary and secondary sources and the focus group discussions conducted in the district the SWOT Analysis of the district in terms of export development has been depicted below

<p>STRENGTHS</p> <ul style="list-style-type: none"> • Strategic location of Kharagpur which is a major rail junction and road hub (NH-16/SH network) enables movement of goods and people. • Production capacity for rice, oilseeds and pulses. The district also possesses Sal and mixed forests supporting NTFP (honey, lac, medicinal plants). • Existence of Kharagpur Industrial Park • Existence of organized clusters producing non-traditional products like human hair wigs and copper handicrafts. The district also holds GI for Patchitra paintings. • Availability of adequate and skilled workforce • Production of Agricultural and Horticultural products suitable for exports 	<p>WEAKNESSES</p> <ul style="list-style-type: none"> • Flood vulnerability in Ghatal - Daspur -nearby riverine belts, seasonal disruptions to roads and farms. • Lack of export infrastructure and effective CFCs in the clusters. Out of the 4 CFCs only two are functional. • Requirement of Export Facilitation and International Marketing Assistance • Cold storage infrastructure is more focused on Potato only. • In adequate warehousing facility for agricultural and other products. • Over dependence of MSMEs on traders in Kolkata/outside the state for markets
<p>OPPORTUNITIES</p> <ul style="list-style-type: none"> • Growing International market for organic chemicals products • Growing fashion trends and acceptability of dressed human hair in both domestic and international markets. • Growing markets for agro and food products • E-commerce exports are gaining momentum • Supportive schemes of both the Central and State Governments for exports • Emergence of multi model transport corridors for 	<p>THREATS</p> <ul style="list-style-type: none"> • Emergence of NTBs like CBAM etc in international markets • Over-congestion of the cluster due to horizontal expansion • Draft issues of riverine port hampering logistics • Poor availability of vessels for smooth movement of goods • Lack of facilities in the clusters leading to migration of value addition to other districts/states

14. EXPORT CHALLENGES IN PASCHIM MEDINIPUR DISTRICT

Paschim Medinipur district is predominantly based on agricultural and horticultural sectors. However, the Industrial sector of the district is accounted by Vidyasagar Industrial Park, Kharagpur. The major contributions for exports from the district is accounted by Organic Chemical products (28.8%) by big firms. This is followed by Human Hair (18.2%) which are predominantly accounted by the MSMEs. Though the export as captured in the trade data indicates more exports of Industrial and chemical products and human hair, there are considerable exports of handicrafts, agricultural food products including rice and vegetables are exported through traders from outside the district or state. The broad issues for the exported and potential products include insufficient road infrastructure, R&D and testing facilities, limited market access, and lack of awareness about modern and effective production practices.

Infrastructure and logistics

- Warehouse and cold storage facilities: The district has ample cold storage facilities for majorly potato. However, the facilities available for agricultural and horticultural products are very limited and insufficient to boost exports.
- Pack house facility is required for food, agricultural and horticultural products from the district.
- Though the district has more production of agricultural, horticultural and fresh flowers, the export potential of the same has not been explored more. The infrastructure and logistics for export of agricultural and horticultural products is a major constraint.
- Transport: The district has one of the most robust transport facilities in the state which promotes economic activities to a larger extent. The Khargpur industrial park rail and port link needs to be strengthened which is suffering from the coordination issues with state agencies, railways and port authorities.

Market access and finance

- Difficulty reaching export markets: Exporters, particularly small artisans and handicraft producers, have trouble accessing international markets due to lack of awareness and hence depend on the traders from different states and Kolkata which not only denies direct export but also fetches low price. The artisans of copper handicrafts and Patchitra paintings need training even in the basic business functions and upkeep.
- Limited access to formal credit: Financing challenges, such as high initial investment costs for upgrades to infrastructure or technology, are significant barriers for many small producers and SHGs which requires creation of common facilitation centres. Most of the MSMEs are also reluctant to have the GST registrations fearing compliance cost.
- Weak export strategy: Though government initiatives exist to boost exports, there are gaps in the district-level execution of a robust strategy for products with high export potential, such as handicrafts, vegetables and flowers. The SEFC should make specific interventions to implement the district level initiatives.

Operational and Environmental challenges

- Though there are four CFCs for Steel furniture, Mat products etc, two of them are not even functional. The effectiveness of the CFCs needs to be monitored and increased.
- The human hair cluster in the district lacks modern processes and value additions due to which mostly raw underworked human hair products are exported and suffers from poor use of technology and scale.
- Climate change impacts: Irregular rainfall, frequent floods, and coastal erosion pose significant risks to both agriculture and horticulture sectors. Unpredictable weather directly disrupts crop yields.
- Though there are storage facilities they provide more standalone services which could bring in service bundling along with storage like certifications, testing etc.
- Lack of modern technology: Many producers in industrial clusters lack modern machinery and technological knowledge, which hinders productivity and the adoption of scientific production methods.

15.GIST OF THE ANALYSIS

The following are the salient points which emerge from the above discussions:

- The major exports of the district is contributed by Organic Chemicals and Human hair which accounts for around 47% of the total exports as reported in the year 2024-25, followed by 25.3 % of Ferro products and Spun pipe exports. Though the district hosts industrial clusters for mat products, steel furniture and copper handicrafts and many agricultural and horticultural products their export contribution is minimal.
- Opportunities for exports of flower and other horticultural, agricultural and food products are high.
- The district has sufficient warehouse and cold storage facilities, majorly for potato but lacks proper facilities for other agricultural and food products..
- Several units located in the clusters are majorly acting as feeder units for MSMEs located in other districts.
- Most of the cluster items produced from the district by MSMEs are suitable for e-commerce exports.
- Exports of MSME products of the district are mostly routed through traders in Kolkata/outside the state.

16.EXPORT ACTION PLAN SUGGESTED

Based on the above facts, analysis of the data and the input from the stakeholders, the following action plan is suggested. The action plan also indicates the desired output of the strategic actions, the responsible agency and the proposed intervention/tool for implementation. It has also been highlighted the activity/activities where a DPR may be required.

Category	Strategic Action	Output Desired	Suggested Agency	Instrument/Intervention
	Operational issues at the CFCs	Increased capacity utilization for exports	State Govt	The issues faced by the interested units to utilise the CFCs need to be taken up by the State Government through the DIC and address the barriers to effective utilisation of the CFCs.
	Foreign Post office facility in for E com Exports	Ease of E-Com exports through Dak Niryat Kendra	Postal Dept. + Customs	Mobile foreign post office visiting the district on designated days
	Strengthening the processes of Warehouse and Cold Storage facilities available in the district for potato.	Utilization by other agricultural and horticultural producers with value added services for testing, packing and packaging etc	State Govt	The Warehouses may provide licensed or franchised testing and cold storage services to the other suitable products. They may also utilise packaging services through empanelled vendors.
	Handholding for direct exports of MSMEs	Increased direct exports from the state	State Govt + GoI	Use acceleration services by institutions like IIFT under suitable schemes. The State Govt. may also launch export incubation fund for supporting the Direct Exports.
	Pack House, Testing and Certification Services	The pack house is required in the district for the food, agri and	State Govt.	The Pack house facility may be created and presented for appropriate funding by

		horticultural products for increased quality of products and their direct exports.		Government Resources. (DPR)
	Training on effective practices and packaging for MSME handicraft producers, majorly silver filigree and Zari and embroidered garments.	Improved productivity and market reach	State Govt.	The Ministry of MSME&T may take up suitable training facilities for the MSMEs and SHGs with expert agencies. Similarly a suitable facilitation for packing and packaging practices may be arranged by the Dept. of MSME. The products identified for the same includes copper handicrafts, human hair, vegetable and other horticultural products including flowers.
	Product and district specific capacity building on exports of MSMEs	Direct exports from MSMEs to diverse markets	State Government	The existing SEFC should undertake time bound product and district specific capacity building of MSMEs in handicrafts, Shrimp and human hair products.

17.ANNEXURES

Table A1: Details of the District Administrator

District Magistrate and Collector

Name	Designation	Email	Phone
Shri Khursheed Ali Qadri, IAS	District Magistrate & Collector	dmpmid@gmail.com	—

Table A 2: Details of the Additional District Magistrate

Additional District Magistrate

Name	Designation	Email	Phone
Sri Sandeep Tudu, WBCS(Exe.)	A.D.M. (Gen.)	admng09[at]gmail[dot]com	8348691701
Smt. Moumita Saha, WBCS(Exe.)	A.D.M. (P)	admpmid[at]gmail[dot]com	8348691781
Sri Kempa Honnaiah, IAS	A.D.M. (Dev.)	adm[dot]midnapore[dot]kh[at]gmail[dot]com	9907445587
Sri Shrinivas Vyankatrao Patil, IAS	A.D.M. (ZP)	aeopasmidzp[at]gmail[dot]com	8348691704
Sri Suman Sourav Mohanty, IAS	A.D.M. (L.R.)	report[dot]admlr[at]gmail[dot]com	9434063796

Source: <https://paschimmedinipur.gov.in/collectorate>

Table A 3: Details at the Sub-Division level

Blocks in Paschim Medinipur (Detailed)

Subdivision	Block (CD Block)
Medinipur Sadar	Medinipur Sadar
	Salboni
	Keshpur
	Garhbeta-I
	Garhbeta-II
	Garhbeta-III
Kharagpur	Kharagpur-I
	Kharagpur-II

Subdivision	Block (CD Block)
	Debra
	Pingla
	Keshiari
	Dantan-I
	Dantan-II
	Narayangarh
	Mohanpur
	Sabang
Ghatal	Ghatal
	Chandrakona-I
	Chandrakona-II
	Daspur-I
	Daspur-II

Table A 4: DIVISION: MIDNAPORE HIGHWAY DIVISION

Category Name	Road Name	Length(in Km)
Major District Road	Adhkatha - Palaschabri Road	5
Major District Road	Barbetia Jamna Road	22.4
Major District Road	Barda Kharar Road	6.4
State Highway	Belda Keshiary Road	13
Other District Road	Bishnupur LowadaChakripan Road	15.2
Major District Road	Bishnupur Radhamohanpur Railway Station Road	5.5
Major District Road	Bridge over river Shilabati at Pancharol on Jharbani - Maita Road	4.85
State Highway	Chandrakona Goaltore SarengaSimlighat Road (0.00 kmp to 29.00 kmp)	29
Major District Road	Debra Maratola Cosai Bank Road	10.25
Major District Road	Debra Sabang Road	26.8
Major District Road	DhadikaKalyanchawk Road	24

Major District Road	Garbeta to Chandrakona Town Road via Raskundu	22.4
Major District Road	Goaltore Industrial Hub (Goaltore-Humgarh Road) (From 17.70 to 29.909)	16
Major District Road	Godapiasal Keshpur via Anandapur Road	6.75
VR	Gologram Malihati Road	9.5
Major District Road	Hematpur Taturpur Road, MDR 8.48	11
Major District Road	Jhapetapore Keshijore via Abhoy Ashram Road	5.24
Major District Road	KalaberiaPirakataDhansole Lalgah Road (0.00 to 28.00 kmp)	28
Major District Road	KalmijoreGopiganj Road	14.5
Major District Road	Kalyanchak Srinagar Road	13.4
State Highway	Keshpur Chandrakona Road	21.25
Major District Road	Keshpur Narajole Road	17.68
Major District Road	Kharar Hazipur Road	16.5
Other District Road	Kharar Irpala Road	5.6
State Highway	KhirpaiRamjibanpur Road	18
Major District Road	Khudiram Road	4.8
VR	Makrampur - Temathani Road, MDR 20.50	22
Major District Road	Midnapore Anandanagar Chandra Dheruaghat Road	24.3
State Highway	Midnapore Keshpur Road	20.55
Major District Road	Mundumari Pingla Paramanandapur Moyna Road (0.00 kmp to 20.00 kmp)	20
Major District Road	NarajoleDaspur Road	14.5
Other District Road	NH 6 to MadpurRailway Station Road	1.9
Major District Road	Palashchabrigat Srinagar Road	5.65
State Highway	PanskuraGhatal Road (9.00 kmp to 33.75 km)	24.75
Other District Road	Patashpur Banguchak Road (11.00 kmp to 28.80 km)	17.8

Major District Road	Pirakata - Chandra Road	13.3
Major District Road	Pirakata - Sijua - Goaltore Road, MDR 16.157	18
Major District Road	Poktapole to Sabang Dasagram Road	13.7
Other District Road	Ramjibanpur Bye Pass Road	2.6
Major District Road	Sabang Mohar Road	12
Other District Road	ShyamalpurDemouli Road	12.54

Table A5: DIVISION: MIDNAPUR DIVISION

Category Name	Road Name	Length (in Km)
Major District Road	Amlagora Link Road	2.3
Major District Road	BalighaiMohanpur Solpatta Road (12.00 km to 31.60 km)	19.6
Major District Road	Belda Bye Pass Road	3.8
State Highway	ChandrakonaGhatal Road	43.28
State Highway	Contai Belda Road (33.80 km to 56.36 km)	22.56
Major District Road	Dantan Bye Pass Road	7
VR	Dantan to Jahaldah	23.3
Major District Road	Garbeta Hoomgarh Road	13
VR	Hoomgarh to Amlasuli	11
Major District Road	I.I.T. Kharagpur Byepass Road MDR 3.92	3.92
Major District Road	Kalaikunda Road	3
VR	Khakurda to Mohonpur	24
Major District Road	Kharagpur Bye Pass Road	18
State Highway	Kharagpur Keshiary Road SH 27.00	27
Major District Road	Link road from Keranitala More to LIC More	0.9
Major District Road	Malancha Road	3.6
Major District Road	Missing link to N.L. Khan Road (Bottala Chawk to M.K.N Road Junction)	1.75

Major District Road	Mohanpur Lachmanpur Road	4.2
VR	Mugbasan - Amanpur - Khetua	15
Other District Road	Mugneeram Ramcoomer Bangur TB Sanatorium (M.R.B.S) Link Road	2
VR	Narayangarh Bazar to Sabang MasantaPukur Road	15.5
Major District Road	Narayangarh Bye Pass Road	4.9
Major District Road	Narendra Lal (N.L) Khan Link Road	6.2
Major District Road	Narendra Lal (N.L) Khan Road	5.63
Major District Road	Orissa Trunk (O.T) Road to Kola (Hatihalka)	7
Major District Road	RadhanagarBirsinghaKharar Road	7.1
VR	Radhanagar to Kuthighat	11
Major District Road	Raniganj - Medinipur Road (147.50 to 151.50 km)	4
Major District Road	Sampriti Sarani	3
Major District Road	SolpattaSonakania Road	7
Major District Road	Sonakonia Bye Pass Road	3.51
Major District Road	Town Road (Municipal Road)	1.2

Source: <https://pwd.wb.gov.in/roads>

Table A6 : Cold Storage in the District

S.No.	Details of the Cold Storage	Product	Total Capacity	Remarks
1	Maa Sarabaswari Him Ghar	Potato		
2	Bishwa Janani Cold Storage	Potato	140500 qtl	
3	Geeta Hemghar	Potato	220000 packet	
4	Sree Nagar Cold Storage	Potato		
5	Nirmal Cold Storage	Potato	70000 qtl	
6	Narendranth cold storage.	Potato	2,80,000 q.	
7	Shree krishna cold storage .	Potato	3,60,000 qtl.	
8	Ohmanand Hemand Pvt. Ltd.	Potato	144088 q	
9	Purnima Cold Storage	Potato	213000 qtl	
10	Baba Bhoudtnath Cold Storage	Potato	300000 qntl	
11	Maa sarada	Potato	188 qtl.	
12	Krishnakanta Himghar & Food Processors	Multipurpose	5880	

13	Maa Saradeswari Himghar Pvt. Ltd.	Potato		
14	Vidya Sagar himghar Pvt. Ltd.	Potato	280000 bags	
15	D.Raj cold storage.	Potato	280,000 packt.	
16	Swambhunath Cold Storage	Potato	242.146 qtl	
17	Maa Subhala Cold Storage Pvt. Ltd.	Potato	183000	
18	Shree Paharimata Cold Storage	Potato	90879 qtl	
19	Maa Saradaswari Himghar Pvt. Ltd.	Potato	400000	
20	Dandpat Cold Storage	Potato	240048 qtl	
21	Sandha Himghar P. Ltd.	Potato	14000	
22	Natraj Cold Storage	Potato	26815	
23	Maa saradeswari Himghar Pvt ltd	Potato	21000 qtl	
24	Sree Basukinath Cold Storage	Potato	1591	
25	Vidya Sagar Himghar Pvt Ltd	Potato	140000 QTL	
26	Geeta Himghar	Potato	110,000 qtl	
27	Biswa Janani Cold Store	Potato	140500 qtl	
28	Dandapat cold store	Potato	240048 qtl	
29	Shree Pohatimata Cold Storage	Potato	90879 QTL	
30	Maa Subhala Cold storage pvt ltd	Potato	183000 qtl	
31	Gauranga Cold Store pvt ltd.	Potato	385000 qtl	
32	Sandha Himghar Pvt. Ltd. Unit- II	Potato	12350	
33	Narayan Cold Storage	Potato	76550 qtl	
34	Sandhya Himghar (P) ltd.	Potato	140,000 q.	
35	Manna cold storage .	Potato	188000 q.	
36	Mahalashame cold storage .	Potato	125700 q.	
37	Gauranga cold storage pvt.ltd.	Potato	7,70,000 b.	
38	Purnima Cold Storage	Potato		
39	Jagatmata Cold Storage	Potato		
40	Shree Nava Singha Cold Storage	Potato		
41	Joymahaprovu Cold Storage	Potato		
42	Chandimata Cold Storage	Potato		
43	Geeta Himghar	Potato		
44	Bankim Cold Storage	Potato		
45	Mahalakhxmi Cold Storage	Potato		
46	Chowdhary Cold Storage	Potato		
47	Biwapita Cold Storage	Potato	13.400mt	

TABLE A7 : WAREHOUSE IN THE DISTRICT

Sr. No	WH Name	Capacity(in MT)	Product
1	Central Warehouse C.K. Road RANGAMATI, PO - DIGRI, PS - GARBETA,	31600	registered under Central Warehouse Development Regulatory Authority
2	Central Warehouse Kharagpur RAKHAJUNGLE, KHARAGPUR,	21500	
3	Central Warehouse Belda VILL - GAZNA, PO - BELDA,	4100	
4	Malabika Cold Storage Private Limited Baikunthapur, PO shankarpur, Daspur,	6200	
5	SWC GARBETA GANGANI, P.O - GARBETA,	6002	
6	M.B. Agrovet Firm Plot No.–90/202, J.L. No.-233, Khatian No. – 25/3 , Mouza- Ranichak, P.S. Kotwali, P.O. Amrakuch	4357	rented by State Warehouse Corporation

Agricultural Production Data**TABLE A 8 : MAJOR CROPS OF PASCHIM MEDINIPUR**

Sl. No.	State/Crop/District	Area (Hectare)	Yield (Ton./Ha.)	Production (Tonnes)
1.	Rice	596968	3.3	1970165
2.	Potato	71974	26.78	1927186
3.	Sugarcane	2507	51.72	129669
4.	Sesamum	65601	1.03	67561
5.	Jute	3194	19.73	63014
6.	Groundnut	12522	2.85	35725
7.	Rapeseed & Mustard	14751	1.12	16550
8.	Maize	1672	3.32	5546
9.	Masoor	3112	1.44	4496
10.	Moong(Green Gram)	3625	1.07	3870
11.	Wheat	605	2.43	1468

12.	Khesari	1778	0.82	1451
13.	Peas & beans (Pulses)	187	2.03	379
14.	Gram	189	1.47	277
15.	Urad	307	0.62	189
16.	Arhar/Tur	36	1.28	46
17.	Horse-gram	3	0.33	1

Source: [Directorate of Economics & Statistics](#)

<https://data.desagri.gov.in/website/crops-apy-report-web>

Vegetables:

TABLE A 9: VEGETABLES PRODUCTION OF PASCHIM MEDINIPUR

Name	Area in (Thousand ha)	Production (2023-24)	Unit
Cabbage	5.431	128.799	Thousand MT
Brinjal	6.653	125.303	
Cauliflower	5.325	106.722	
Tomato	2.887	84.560	
Onion	3.139	54.414	
Ladies Finger	3.047	34.657	
Other Cucurbits	2.831	31.397	
pumpkin	2.296	26.696	
Watermelon	1.865	27.836	
Other Vegetables	3.586	20.607	
Elephants Foot Yam	0.891	19.618	
Radish	1.374	19.465	

Cucumber	1.200	15.450	
Arum	0.753	14.139	
Pointed Gourd	1.028	14.066	
Bottle gourd	1.543	12.238	
Sweet Potato	0.793	7.620	
Carrot	0.278	4.767	
Beans	1.157	4.692	
Peas	0.481	2.690	
Green Chili	1.042	1.584	
Capsicum	0.017	0.302	
All Vegetables	47.597	737.721	

Source: “[Report from the Directorate of Horticulture Dept. of FPI & H, Govt. of W.B.](#)”

Fruits:

TABLE A 10: FRUIT PRODUCTION OF PASCHIM MEDINIPUR

Name	Area in (Thousand ha)	Production (2023-24)	Unit
Banana	1.599	33.120	Thousand MT
Mango	4.712	31.257	
Guava	1.563	15.694	
Papaya	0.720	13.499	
Jackfruit	0.828	11.379	
All Fruits	10.873	117.465	

Source: “[Report from the Directorate of Horticulture Dept. of FPI & H, Govt. of W.B.](#)”

Flowers:

TABLE A 11: FLOWER PRODUCTION OF PASCHIM MEDINIPUR

Name	Area in (Thousand ha)	Production (2023-24)	Unit
Total Cut Flower	2.318	66.016	(Cr. Cut Flowers)
Tuberose	1.145	32.059	Crore Sticks
Rose	0.467	28.992	Crore Sticks
Total Loose Flower	2.318	9.389	Thousand MT
Marigold	0.975	7.828	Thousand MT
Chrysanthemum	0.123	2.267	Crore Sticks
Gladiolus	0.151	2.264	Crore Sticks
All Flowers	4.207	9.389 (Th. MT) & 66.016 (Cr. Cut Flowers)	

Source: “[Report from the Directorate of Horticulture Dept. of FPI & H, Govt. of W.B.](#)”

TABLE A 12: LIST OF MSME CLUSTER

Name Of Cluster	Location	Activity Of Cluster	Cluster Under Dpt.	No Of Unit	No. Of Employees
STEEL FABRICATI ON, GARBETA-II	GARBETA-II	<u>METAL FABRICATION & FURNITURE</u>	MSME	35	105

RANISARAI WOODEN FURNITURE CLUSTER	NARAYANGARH	WOODEN FURNITURE & ALLIED PRODUCTS	MSME	20	63
DASPUR COPPER ORNAMENT CLUSTER	DASPUR-II	JEWELLERY	MSME	44	200
WOODEN FURNITURE, BALARAMPUR	KHARAGPUR-II	WOODEN FURNITURE & ALLIED PRODUCTS	MSME	25	79
NARAYANGA RH STEEL FABRICATION		METAL FABRICATION & FURNITURE	MSME	62	240
VIDYASAGAR HANDLOOM CLUSTER	GHATAL	TEXTILES & READYMADE GARMENTS	HANDLOOM	1	105
SHYAMSUND ARPUR HANDLOOM CLUSTER	DANTAN-II	TEXTILES & READYMADE GARMENTS (PRODUCTION AND SELL GUMCHA)	HANDLOOM	1	438
BAMBOO CRAFTS ITEM	SABANG	JUTE & OTHER FIBRE BASED PRODUCTS (BAMBOO CRAFTS ITEM)	KHADI	1	100
PATACHITRA	PINGLA	PATACHITRA PRINTING	KHADI	1	250
MAT	SABANG	JUTE & OTHER FIBRE BASED PRODUCTS (MAT WEAVING)	KHADI	9	930

Source: [Cluster Section | Micro, Small & Medium Enterprises, Government of West Bengal](#)

Cluster Name	Technical Agency	Implementing Agency	Agency Name	No. of Artisans
CSWS Mat Craft Cluster	Fair Trade Forum – India (FTF-I)	Child & Social Welfare Society	IMEDF	500

TABLE A 13: BANKING PROFILE

Banking Profile

District:	Pas. Medinipur	State:	West Bengal	Lead Bank:	PNB
------------------	-----------------------	---------------	--------------------	-------------------	------------

1. NETWORK & OUTREACH (As on 31/03/2023)

Agency	No. of Banks/Sec.	No. of Branches				No. of Non-Formal Agencies Associated			Per Branch Outreach	
		Total	Rural	Semi-urban	Urban	mFIs/mPOs	SIBGs/JLGs	BCs/BFs	Villages	Households
Commercial Banks	19	394	--	--	--	--	--	1385	n/a	n/a
Regional Rural Banks	1	30	--	--	--	--	--	123	n/a	n/a
District Central Coop Banks	2	32	--	--	--	--	--	0	n/a	n/a
Coop. Agr. & Rural Dev. Bank	2	8	--	--	--	--	--	0	n/a	n/a
Primary Agr. Coop. Societe	480	480	--	--	--	--	--	0	n/a	n/a
Others	1	3	--	--	--	--	--	0	n/a	n/a
All Agencies	505	867	--	--	--	--	--	1508	n/a	n/a

2. DEPOSITS OUTSTANDING

Agency	No. of accounts					Amount of Deposit (₹ lakh)				
	31 Mar 21	31 Mar 22	31 Mar 23	Growth (%)	Share (%)	31 Mar 21	31 Mar 22	31 Mar 23	Growth (%)	Share (%)
Commercial Banks	n/a	n/a	n/a	n/a	n/a	2217670.00	2278196.00	2517916.00	10.51%	86.96%
Regional Rural Banks	n/a	n/a	n/a	n/a	n/a	97653.00	101056.00	100231.00	-0.82%	3.46%
Cooperative Banks	n/a	n/a	n/a	n/a	n/a	243919.00	264376.00	270572.00	2.35%	9.33%
Others	n/a	n/a	n/a	n/a	n/a	2432.00	2512.00	6725.00	167.71%	0.23%
All Agencies	n/a	n/a	n/a	n/a	n/a	2568713.00	2646280.00	2895184.00	9.41%	100.00%

3. LOANS & ADVANCES OUTSTANDING

Agency	No. of accounts					Amount of Loan (₹ lakh)				
	31 Mar 21	31 Mar 22	31 Mar 23	Growth (%)	Share (%)	31 Mar 21	31 Mar 22	31 Mar 23	Growth (%)	Share (%)
Commercial Banks	n/a	n/a	n/a	n/a	n/a	940757.00	1079898.00	1225428.00	13.48%	85.83%
Regional Rural Banks	n/a	n/a	n/a	n/a	n/a	39654.00	41937.00	42728.00	1.80%	2.99%
Cooperative Banks	n/a	n/a	n/a	n/a	n/a	111322.00	109545.00	148813.00	35.86%	10.42%
Others	n/a	n/a	n/a	n/a	n/a	10870.00	10900.00	11023.00	1.13%	0.77%
All Agencies	n/a	n/a	n/a	n/a	n/a	1111003.00	1242800.00	1428032.00	14.65%	100.00%

4. CD-RATIO

Agency	CD Ratio		
	31 Mar 21	31 Mar 22	31 Mar 23
Commercial Banks	42.82	47.40	48.67
Regional Rural Banks	39.98	41.74	42.63
Cooperative Banks	45.63	41.43	55.94
Others	433.31	433.92	154.94
All Agencies	43.33	46.95	49.32

5. PERFORMANCE UNDER FINANCIAL INCLUSION (No. of A/cs)

Agency	Cumulative up to 31 Mar 2023			
	PMJDY	PMSBY	PMJJBY	APY
Commercial Banks	n/a	n/a	n/a	n/a
Regional Rural Banks	n/a	n/a	n/a	n/a
Cooperative Banks	n/a	n/a	n/a	n/a
Others	n/a	n/a	n/a	n/a
All Agencies	2928982	1431593	469191	245250

6. PERFORMANCE TO FULFIL NATIONAL GOALS (As on 31/03/2023)

Agency	Priority Sector Loans		Loans to Agri. Sector		Loans to Weaker Sections		Loans under DRI Scheme		Loans to Women	
	Amount (₹ lakh)	% of Total Loans	Amount (₹ lakh)	% of Total Loans	Amount (₹ lakh)	% of Total Loans	Amount (₹ lakh)	% of Total Loans	Amount (₹ lakh)	% of Total Loans
Commercial Banks	1069678.00	86.09%	513282.00	78.34%	n/a	n/a	n/a	n/a	n/a	n/a
Regional Rural Banks	41805.00	3.41%	32025.00	4.88%	n/a	n/a	n/a	n/a	n/a	n/a
Cooperative Banks	119542.00	9.75%	102142.00	15.58%	n/a	n/a	n/a	n/a	n/a	n/a
Others	9286.00	0.76%	7890.00	1.19%	n/a	n/a	n/a	n/a	n/a	n/a
All Agencies	1227401.00	100.00%	655579.00	100.00%	n/a	n/a	n/a	n/a	n/a	n/a

7. AGENCY-WISE PERFORMANCE UNDER ANNUAL CREDIT PLANS

Agency	2020-21			2021-22			2022-23			Average Ach [%] in last 3 years
	Target (₹ lakh)	Ach'ment (₹ lakh)	Ach'ment [%]	Target (₹ lakh)	Ach'ment (₹ lakh)	Ach'ment [%]	Target (₹ lakh)	Ach'ment (₹ lakh)	Ach'ment [%]	
Commercial Banks	1137839.00	587253.00	51.66%	1326285.00	693375.00	48.13%	1474375.00	1056678.00	71.67%	57.95%
Regional Rural Banks	60000.00	37490.00	62.31%	132095.00	39658.00	29.27%	150435.00	41805.00	27.79%	34.41%
Cooperative Banks	189500.00	97757.00	51.59%	89814.00	67950.00	80.07%	95229.00	119642.00	125.66%	77.42%
Others	7000.00	0.00	N/A	0.00	0.00	N/A	0.00	9286.00	n/a	N/A
All Agencies	1394339.00	722410.00	51.81%	1542194.00	744983.00	48.31%	1720039.00	1227400.00	71.36%	57.87%

8. SECTOR-WISE PERFORMANCE UNDER ANNUAL CREDIT PLANS

Broad Sector	2020-21			2021-22			2022-23			Average Ach [%] in last 3 years
	Target (₹ lakh)	Ach'ment (₹ lakh)	Ach'ment [%]	Target (₹ lakh)	Ach'ment (₹ lakh)	Ach'ment [%]	Target (₹ lakh)	Ach'ment (₹ lakh)	Ach'ment [%]	
Crop Loan	486447.00	353595.00	72.69%	604762.00	329944.00	55.05%	n/a	n/a	n/a	n/a
Term Loan (Agri)	489410.00	71279.00	24.67%	203463.00	115170.00	48.30%	n/a	n/a	n/a	n/a
Total Agri. Credit	775367.00	424874.00	54.79%	843225.00	448084.00	53.14%	969006.00	655770.00	66.02%	58.53%
MSME	454520.00	187188.00	41.18%	506405.00	229115.00	45.22%	521374.00	522052.00	100.13%	62.82%
Other Priority Sector*	164422.00	110348.00	67.11%	192564.00	74084.00	38.94%	205659.00	49760.00	24.20%	41.78%
Total Priority Sector	1394339.00	722410.00	51.81%	1542194.00	744983.00	48.31%	1720039.00	1227400.00	71.36%	57.87%

9. NPA Position (Outstanding)

Agency	2020-21			2021-22			2022-23			Average NPA [%] in last 3 years
	Total O/S (₹ lakh)	NPA Amt. (₹ lakh)	NPA [%]	Total O/S (₹ lakh)	NPA Amt. (₹ lakh)	NPA [%]	Total O/S (₹ lakh)	NPA Amt. (₹ lakh)	NPA [%]	
Commercial Banks	n/a	n/a	n/a	n/a	n/a	n/a	n/a	n/a	n/a	n/a
Regional Rural Banks	n/a	n/a	n/a	n/a	n/a	n/a	n/a	n/a	n/a	n/a
Cooperative Banks	n/a	n/a	n/a	n/a	n/a	n/a	n/a	n/a	n/a	n/a
Others	n/a	n/a	n/a	n/a	n/a	n/a	n/a	n/a	n/a	n/a
All Agencies	n/a	n/a	n/a	n/a	n/a	n/a	n/a	n/a	n/a	n/a

*O/S includes Export Credit, Education, Housing, Social Infrastructure, Renewable Energy

Source: Lead Bank and SEBC

N/A: Not applicable

n/a: Data not available

Source: Source: <https://www.nabard.org/>

Table A 14 : PRODUCTS EXPORTED FROM PASCHIMMEDINIPUR

ITCHS Code	Item Desc	Sum of Value (INR)
5010010	HUMAN HAIR,UNWORKED; WHETHR OR NOT WASHD OR SCoured	835632654
10063010	RICE PARBOILED	389793286
10063090	RICE EXCPTG PARBOILED (EXCL BASMATI RICE)	374802089
34023100	LINEAR ALKYL BENZENESULPHONIC ACIDS AND THEIR SALTS (ANIONIC ORGANIC SURFACE ACTIVE AGENTS, W/N PUT UP FOR RETAIL SALE)	3964905231
67030010	HUMAN HAIR DRESSED OR OTHERWISE WORKED	2508467389
72023000	FERRO-SILICO-MANGANESE	2002728159
73030030	SPUN PIPE	1490746491
73259999	OTHER CAST ARTICLES OF IRON OR STEEL N.E.S	337237356
84295200	MCHNRY WTH A 360 DGR. RVLVNG SUPR-STRCTR	731172095
87083000	MOUNTED BRAKE LININGS	1237624514

Source: Dashboard of Ministry of Commerce & Industry, Govt of India

Table A 15: FGD Report of Paschim Medinipur

Section A				
Districts Covered		Date		Duration
Paschim Medinipur		18.07.2025		1.30 PM - 4.30 PM
No. of participants				
Total	90			
Entrepreneurs / Association/Cooperation/Chamber of commerce	82			
Trade Facilitation Institution	5			
	1			
Government Stakeholders	2			
IIFT Team Participant	5			
Mr. Raktim Mitra				
Ms. Tina Majumder				
Section B				
Products				

Sabui & Babui Handicrafts	PotChitra	Copper Ornaments	Mat Products	Text Print (Hossiey - Bed Sheets)	
Steel Fabrication	Steel Furniture	Rice	Jute Products		
<i>Salient Inputs from the FGD</i>					
Products	Physical Infra Core	Physical Infa Support	Soft Infrastructure	Others	Activities
			Marketing Assistance to Sabui & Babui Handicrafts Cluster		Marketing expert to be assigned - to be included in ZEHAP
			Requirement of Handholding for the Handicrafts Products - Export Awareness, Marketing, etc		Standalone for SEFC - Morehandholding and reach
			Handholding required for Pricing Strategy (Price Competitiveness) & Marketing Assistance & Packaging Knowledge for Copper Ornaments		One / Two days Handholding Export Training Camp is required
	Display Unit required for Sabui Babui Handicrafts, PotChitra,				to be included in ZEHAP for DPR

	Copper Ornaments				
	Packaging for Handicrafts Products required				to be included in ZEHAP for DPR
		Custom Unit in Postal Division with DNK	Proper Packaging like Bubble wrapping for Handicrafts item		To be done by Indian Post will be added in ZEHAP

Facilities Available

Paschim Medinipur	CFC	Steel Fabrication (Galvanisation)			
	Upcoming CFC	Steel Furniture			
	HUB	Gold Hub	Mat & Mat Product Hub		