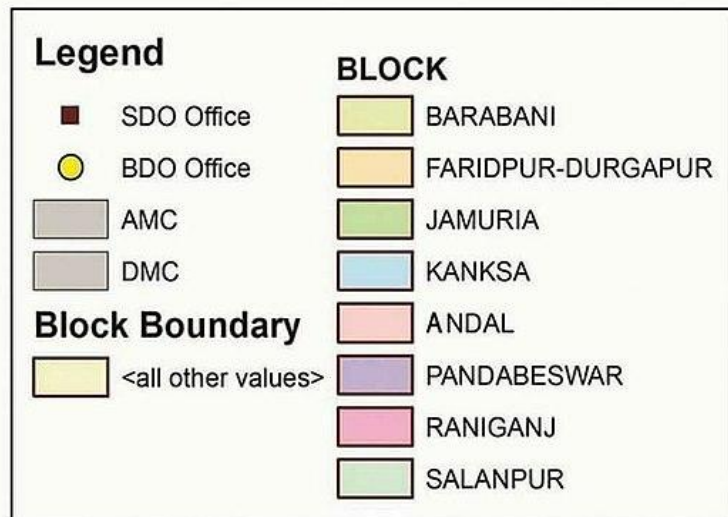
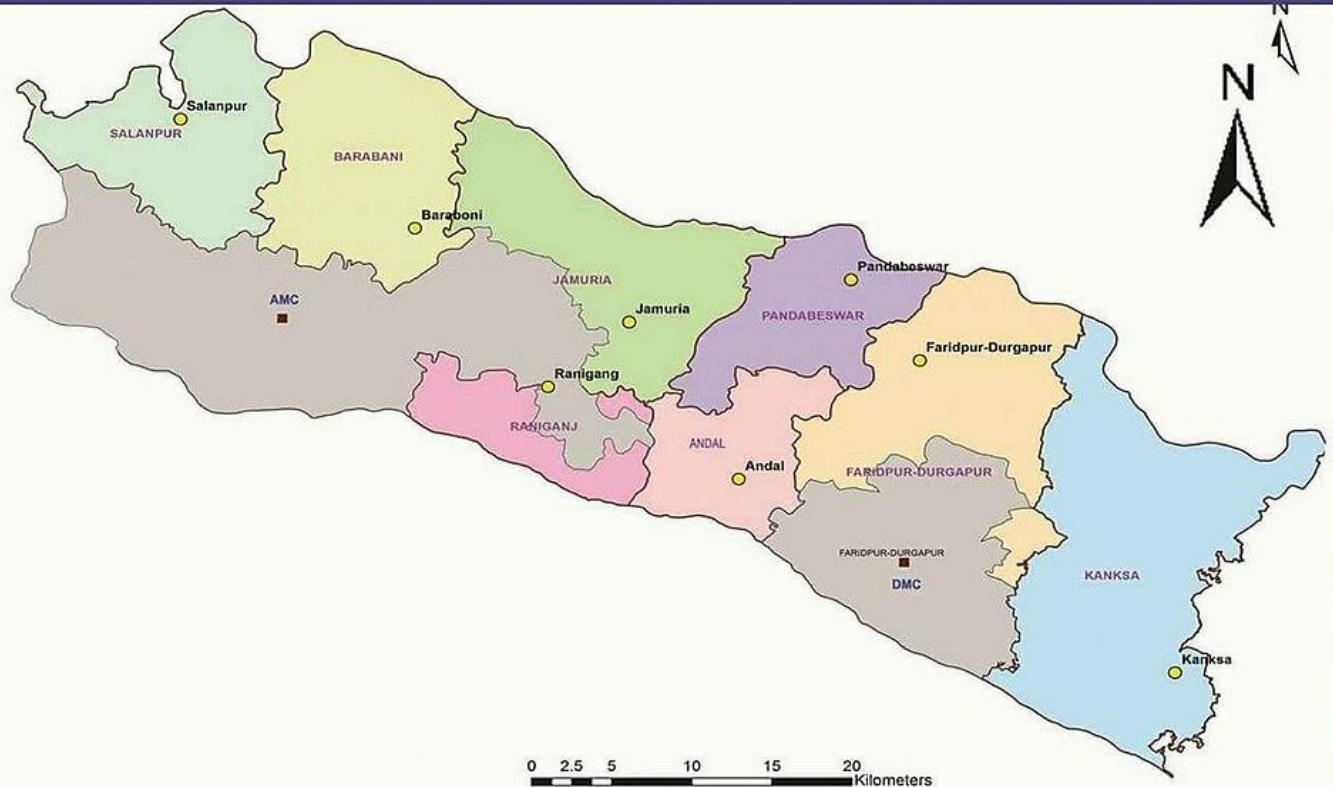


# DISTRICT PROFILE

## PASCHIM BARDHAMAN

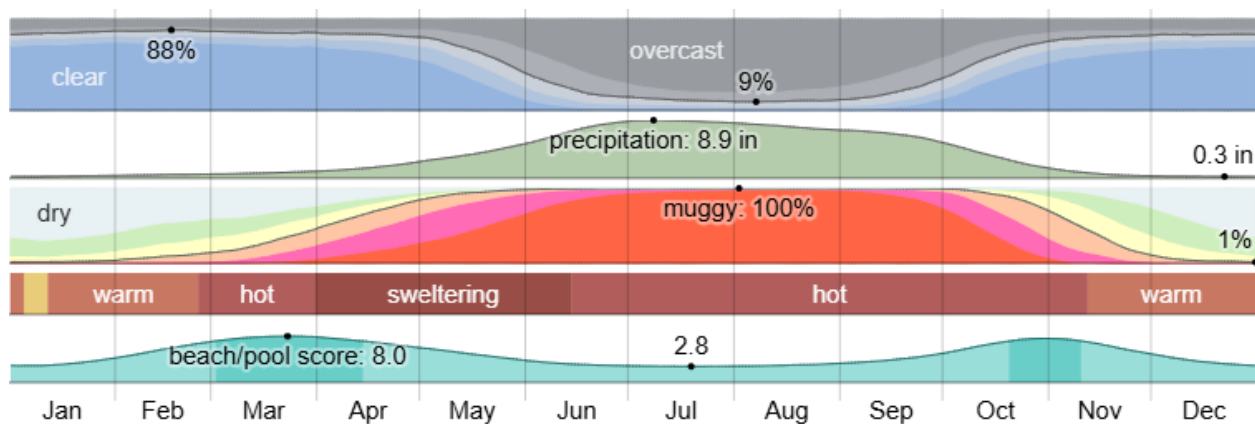


## 1. INTRODUCTION

**Paschim Bardhaman**, located in the state of West Bengal, India, is a predominantly urban and industrial district formed on **7 April 2017** after the bifurcation of the erstwhile Bardhaman district. With its headquarters in **Asansol**, the district spans an area of **1,603 sq km** and is home to over **2.88 million people**. Known for its **rich coal reserves and steel production**, it houses major industrial hubs like the **IISCO Steel Plant** and **Durgapur Steel Plant**, making it one of the most economically vital regions in the state.

## 2. CLIMATIC CONDITIONS

The climate of the district is normally moderate. The temperature ranges from 24°C to 44°C in Summer and 6°C to 26°C in Winter. The annual average rainfall of the district is 1,300 mm.<sup>1</sup>



**Fig 1 : Climatic Mapping of Bardhaman**  
Source: Weather Spark

## 3. ADMINISTRATIVE PROFILE

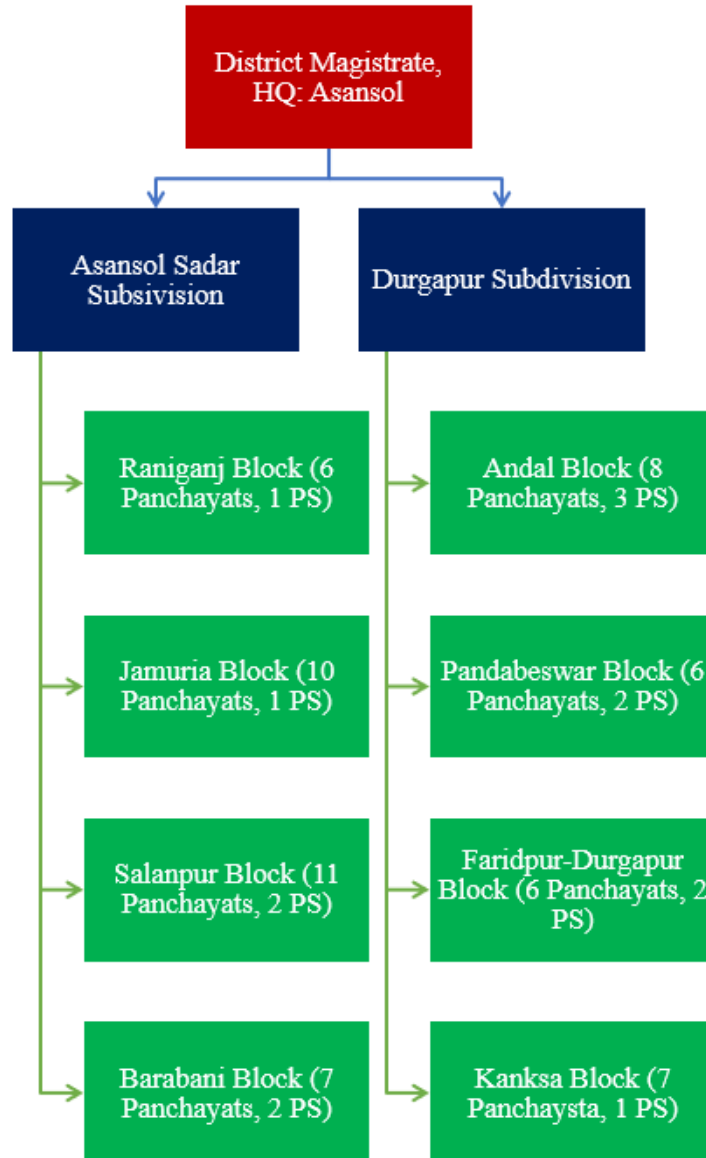
The administrative order of Paschim Bardhaman is led by one District Magistrate and four Additional District Magistrates. The district has two subdivisions,

- Asansol Subdivision
- Durgapur Subdivision

<sup>1</sup> Data compiled from Paschim Bardhaman|Agriculture

The urban governance is managed by the Municipalities while the rural governance is dealt by the Gram Panchayats.

Asansol Sadar subdivision has 4 panchayat samitis, 35-gram panchayats, 181 mouzas and 165 inhabited villages. Durgapur subdivision has 4 panchayat samitis, 27-gram panchayats, 171 mouzas and 151 inhabited villages. The major component of the administrative structure is shown below through a flow chart, in Fig below



**Fig 3.1 Flow Chart of Administrative Order of Paschim Bardhaman**

The details of the administrative head's office can be found in **Table A1, A.2 and A3** in the Annexure section.

#### **4. LOCATION AND GEOGRAPHY**

Paschim Bardhaman is located in the central-left part of West Bengal. Being surrounded by, Birbhum at the North, Purba Bardhaman in the East, Bankura and Purulia in South and Jharkhand on its left, it has access to both the central part of the state and the western boundary itself that facilitates interstate exchange.

Paschim Bardhaman covers an **area of 1,603 sq. km.** Within this area, the district has 12% area under forest. The Durgapur forests are continued in the Birbhum district beyond the Ajay while the forest area in the Asansol subdivision forms a part of the forest area of Dumka district of Jharkhand.

Paschim Bardhaman is one of the premier districts in India in terms of value of mineral. The Raniganj coalfield was the birthplace of the Indian coal industry. Besides coal, important minerals found in the district are iron ores, calcium carbonate, abrasives, silica bricks and moulding sands, glass sands, building materials, manganese, bauxite, laterite etc.<sup>2</sup>

#### **5. DEMOGRAPHY**

According to the district's official website, the **population** of the district is 28,82,031 or about **28 Lakh 82 thousand**. The **population density** is, about **1798** people per sq. km. Amongst these, **78.75%** are **literate**, i.e. about **22,69,599.42 people** are **literate**. The **sex ratio** is **922** Females to 1000 Men. There are 1,497,479 (52%) males and 1,384,452 (48%) females as per the CDAP by Krishi Vigyan Kendra, Burdwan.<sup>3</sup>

The demographic distribution of Paschim Bardhaman is shown below in Table 1,

---

<sup>2</sup> Information gathered from [Paschim Bardhaman](#) and [CDAP](#) by Krishi Vigyan Kendra Burdwan

<sup>3</sup> Information gathered from [Paschim Bardhaman](#) and [CDAP](#) by Krishi Vigyan Kendra Burdwan

*Table 1: Demographic Distribution of Paschim Bardhaman*

Parameters	Population
Total Population	28,82,031
Male Population	14,97,479
Female Population	13,84,452
Literate	22,69,599.42
Sex Ratio	922

Source: Data compiled from [Paschim Bardhaman](#) and [CDAP](#) by Krishi Vigyan Kendra Burdwan

## 6. LOGISTIC PROFILE

Paschim Bardhaman has two major central urban agglomerations

- Asansol, Kulti, Bhanowara, Jamuria, Jemari, Raniganj, Amkula, Murgathaul, Raghunathchak and Ballavpur together form the Asansol UA.
- Durgapur UA consists of Durgapur, Arrah, Bamunara, Amlajora, Kanksa, Panagarh, Mankar, Shibpur, Andal, Ukhra, Kajora, Pandabeswar, Ichhapur and Madhaiganj.

Asansol in the west and Durgapur in the Eastern region of the district, both functioning as industrial hubs, demand smooth functioning of their logistic system.

### *Road Transport*

In Paschim Bardhaman, there are two major Roadways divisions,

- Asansol Division (23 Roads, 159.52 km.)
- Asansol Highway Division (31 Roads, 255.32 km.)

- In the Asansol Division, there are total 23 roads, including major district roads, Village roads and 4 State Highways. These State highways are,

- ❖ Barakar Purulia Road
- ❖ Lithuria Road

- ❖ Radhanagar Dishergarh Road
- ❖ Sitarampur Rupnarayanpur Road

-The Asansol Highway Division has got total 31 roads, among which, there are 2 State highways,

- ❖ NH 2 to Durgapur Barrage Road with link to Railway Station
- ❖ Panagarh Ilambazar Road<sup>4</sup>

Apart from these,

**National Highway 19 and 114** pass through the district provisioning the connectivity for WB/Jharkhand Border to Second Vivekananda Bridge and from Burdwan to Mallarpur respectively.<sup>5</sup>

### ***Rail Transport***

The district has two major Rail stations: Asansol Railway Station and Durgapur Railway Station.

The Asansol Railway Station offers logistics services primarily for parcels and luggage, managed by Indian Railways Parcel Services. The station is on the Howrah–Delhi main line. It is the 8th busiest railway station in India in terms of frequency of trains after Kanpur Central, Vijayawada Junction, Delhi Junction, New Delhi, Ambala Cant, Howrah and Patna Junction.

Durgapur railway station offers logistical connectivity via rail to major Indian cities, access to road transport through National Highway 2 and state highway connections, and facilities like a **Private Freight Terminal** (PFT) and an Inland Container Depot (ICD) with customs and warehousing services. The station also features a bus stand connecting to mini-bus and other city bus routes for local transport.

Allied **ICD** Services Ltd. (AISL) is the custodian of ICD Durgapur in West Bengal, the only AEO Certified Inland Container Depot in eastern India. Inaugurated in 2006, Allied ICD Services Ltd. is a part of the PDP Group. ICD Durgapur is EDI enabled and is a common user facility having a full-fledged customs house functioning within its customs notified area. <sup>6</sup>

---

<sup>4</sup> Information gathered from [PWD](#)

<sup>5</sup> Information taken from [National Highways|PWD](#)

<sup>6</sup> Data taken from ["Bardhaman-Asansol MEMU 63505"](#). India Rail Info.

### ***Water Transport***

The major rivers of Paschim Bardhaman are, Damodar, Ajay and Barakar. None of these are significant from a logistical point of view. Ajay is seasonal, and Barakar is majorly used as a source of hydropower, thereby being divided effectively into multiple water channels by the dams.

As for Damodar, it is majorly used for the water supply of the industrial belts of Durgapur. Furthermore, the barrages made on it make it non-navigable.

### ***Air Transport***

Paschim Bardhaman has The Kazi Nazrul Islam (KNI) - Domestic Airport at Durgapur.

#### **Kazi Nazrul Islam Airport (KNI Airport / RDP)**

Kazi Nazrul Islam Airport (IATA: RDP, ICAO: VEDG) serves Durgapur and surrounding regions. It's situated at Andal, approximately 17 km from Durgapur city centre and about 34 km from Asansol's bus terminus and about 100 km distant from Purba Bardhaman.

The airport spans 650 acres, featuring a 2,800-meter runway, night-landing capability, and CAT I ILS. The 5,750 sqm terminal handles up to 1 million passengers annually, with airline expansion possible. It also includes ATMs, check-in counters, baggage belts, F&B outlets, Wi-Fi, medical clinic. There's a dedicated cargo terminal, and IndiGo CarGo operates an office at the airport, handling various cargo services and shipments. <sup>7</sup>

Apart from this, The Kolkata Airport can also be reached through the highways (201.9 km) and railways (113 km).

#### **Export infrastructure at Netaji Subhash Chandra Bose International Airport (CCU), Kolkata**

Netaji Subhas Chandra Bose International Airport (CCU), Kolkata, boasts a well-developed International Air Cargo Terminal, essential for facilitating exports from the region and connecting businesses to global markets. Here's a breakdown of its key features: International air cargo terminal

---

<sup>7</sup> Information gathered from KNI Airport, BAPL

- Established Expertise:

### **Kolkata's International Air Cargo Terminal**

- holds the distinction of being the first of its kind in India, commissioned in 1975.

- Strategic Location: It's situated conveniently, just half a kilometer north of the international terminal building, with robust road infrastructure for seamless cargo movement.
- Extensive Facilities:
  - Covered Area: The terminal encompasses a vast 21,906 square meters of covered space, [according to www.nscbiairport.com](http://www.nscbiairport.com).
  - Capacity: It has an impressive annual holding capacity of 120,000 metric tons, including transshipment cargo.
  - Aircraft Accommodation: Four dedicated parking bays cater to freighter aircraft, accommodating large models like the Boeing 747.
- Integrated Services: The Airports Authority of India (AAI) has meticulously designed the terminal to offer a comprehensive range of facilities for efficient cargo processing, comparable to international standards.
- One-Stop Shop: All major airlines and regulatory agencies involved in pre-shipment formalities and clearance are conveniently housed under one roof, streamlining the export process.
- Export Wing: A dedicated export wing within the cargo terminal provides a covered area of 8,516 square meters, including an Elevated Transfer Vehicle (ETV) area of 1,333 square meters.
- Special Cargo Handling:
  - Cold Storage: Dedicated facilities with three chambers and controlled temperatures cater to temperature-sensitive cargo like pharmaceuticals, vegetables, fruits, and meat.
  - Strong Room: A secure strong room handles valuable cargo.
  - Hazardous Cargo Shed: A designated shed safely stores and manages hazardous cargo.
  - Transshipment Shed: Facilitates efficient transfer of goods between flights.

- General facilities
  - Integrated Cargo Management System (ICMS): An online system streamlines data processing and ensures efficient cargo management.
  - Equipment: Forklifts, high reach takers, electronic and mechanical weighing machines, cargo trolleys, and power pallet trucks enhance operational efficiency.
  - Parking & Docking: Dedicated idle Unit Load Device (ULD) parking areas and 16 truck docks ensure smooth flow of vehicles and cargo handling.
  - Disposal Unit: Facilitates the disposal of unclaimed or uncleared cargo.
- Connectivity and reach
  - Serves as a critical hub for air cargo services across the entire Eastern and Northeastern regions of India.
  - It facilitates international freight transactions with six major global market regions, including South-Asian, South-East Asian Countries, Western Countries, Middle-East Countries, and Central Asia.

In summary, Kolkata Airport's robust export infrastructure, including a well-equipped and strategically located cargo terminal, efficient processing systems, and dedicated facilities for various types of cargo, positions it as a vital gateway for businesses looking to export goods from Eastern India to the global marketplace<sup>8</sup>.

## **7. EXPORT INFRASTRUCTURE**

In Paschim Bardhaman, export infrastructure is primarily centered around road and rail connectivity, leading to major ports and airports, along with the Inland Container Depot (ICD) in Durgapur. As an industrial hub, the district relies on these facilities for customs clearance, storage, and logistical services.

### ***Land Custom Station***

Paschim Bardhaman district does not have any Land Custom Stations (LCS) because it is an inland district and does not share a land border with any other country. Land Custom Stations are

---

<sup>8</sup> Data Compiled from Airport Authority of India

specifically located at international borders to facilitate the clearance of goods and passenger movement.

Relevant customs facilities

While there are no land border crossings in Paschim Bardhaman, the district is home to an Inland Container Depot (ICD) , which handles customs clearance for goods moved by road and rail.

- Allied ICD Services Limited (ICD Durgapur) : Located in the Industrial Area of Durgapur, this Inland Container Depot handles customs-related cargo and logistics services for the region. It provides a key hub for industrial Paschim Bardhaman, allowing for the import and export of goods without needing to travel to a coastal port. The ICD has its own port code (INDUR6) for tracking cargo<sup>9</sup>.

### ***Integrated Check posts***

Paschim Bardhaman does not have any Integrated Check Posts (ICPs) because it is an inland district and does not share an international land border. ICPs are specifically constructed at a country's border to streamline the movement of goods and people.

The nearest ICPs for residents and businesses in Paschim Bardhaman are in other districts of West Bengal that border neighboring countries.

Nearest operational ICP

- Petrapole, North 24 Parganas

: This is the largest and most active land port in South Asia. It facilitates the movement of both goods and passengers between India and Bangladesh. For businesses in Paschim Bardhaman, this is the primary route for land-based trade with Bangladesh

### ***Cold Storages***

There are total 81 storages in Bardhaman, as according to the National Horticulture Board data. Eventually all of these storages are Potato storages. The Jay Maa Kali Cold Storage Pvt. Ltd. Has

---

<sup>9</sup> Land Custom Stations, Kolkata

the most (5) chambers. Amongst 81, 21 storages do not have any additional facilities. However, the rest 60 storages are equipped with facilities like Packaging, Grading, Drying, pre-cooling, Ripening Chamber – according to their own needs. Two of these storages are presently being used Multi-purposefully - Bedia Cold Storage Pvt. Ltd. and Shree Durga Cold Storage Pvt. Ltd. These have capacities of 8000 MT and 138887 qtl. respectively. The Bedia Cold Storage Pvt. Ltd. is the only storage to get subsidy.

Further details of all the storages can be found in Table A4, in the Annexure section.

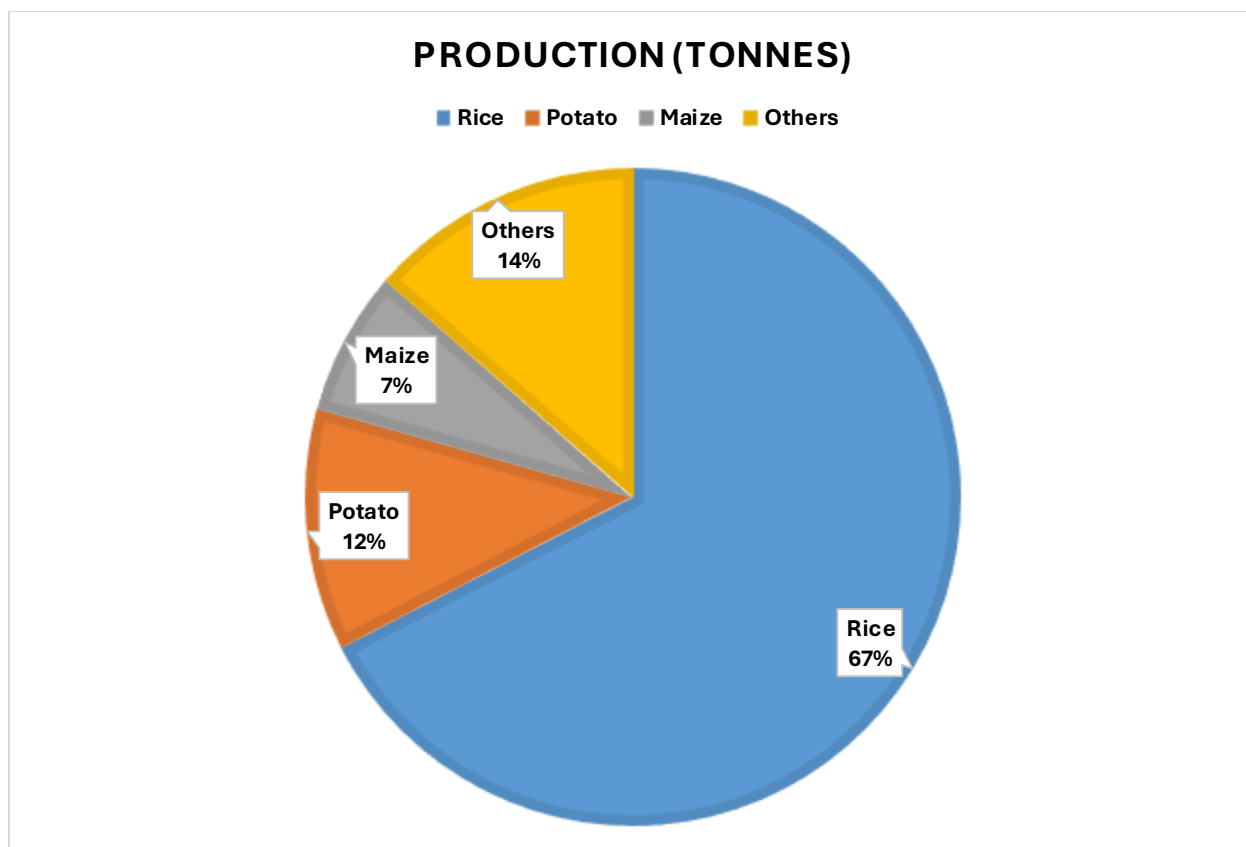
### ***Warehouse***

Paschim Bardhaman, as a key industrial district, has robust warehouse infrastructure supported by strategic logistics hubs, road networks, and development projects. However, as per the government data, the government registered warehouses are located in Purba Bardhaman. Major private warehouses in Paschim Bardhaman include large logistics parks and specialized facilities operated by established logistics and real estate companies. These modern spaces offer state-of-the-art infrastructure for storage, third-party logistics (3PL) services, and inventory management.

## **8. AGRICULTURAL PROFILE**

The district comprises one Agricultural Subdivision namely Durgapur Subdivision. The present **cropping intensity is 120%**, which could be improved through better irrigational facility as well as upgraded technological infusion in the agrarian production system.

The major crops of Paschim Bardhaman are, **Rice, Potato and Maize**. Rice alone contributes 67% to the gross agricultural produce of the district. Although at a substantial difference, Potato and Maize are respectively in second and third position, with 12% and 7% contribution. The contribution of the other crops individually is negligible; therefore, they are shown as a clubbed group, “Others”, which ensembled, takes 14% share of the gross agricultural product of the district.



**Fig 3 Agricultural composition of Paschim Bardhaman**

The list of all crops cultivated in Paschim Bardhaman, along with their yield, production and land coverage statistics are given in **Table A5** in the Annexure Section. <sup>10</sup>

### ***Horticulture Profile***

Paschim Bardhaman's horticulture focuses on diversifying traditional agriculture by promoting various horticultural crops, including fruits like mango, banana, and apple, vegetables like tomatoes and onions, and potential for flowers, due to the district's transitional climate and soil suitability for such crops.

### ***Fruits:***

<sup>10</sup> Data collected from [Agriculture|Paschim Bardhaman](#)

---

*Table 2 Major Fruit Production for Paschim Bardhaman*

---

Name	Area in (Thousand ha)	Production in Crore Sticks (2023-24)	Unit
Mango	0.855	7.6	Thousand MT
Guava	0.243	2.54	
Jackfruit	0.11	1.69	
Total	1.208	11.83	

Source: "Report from the Directorate of Horticulture Dept. of FPI & H, Govt. of W.B."

- ❖ As can be observed, Mango is both the most produced fruit and covers the most land.
- ❖ Mango has a share of 64.24%.

**Flowers:**

---

*Table 3 Major Flower Production for Paschim Bardhaman*

---

Name	Area in (Thousand ha)	Production in Crore Sticks (2023-24)	Unit
Rose	0.006	0.056	Thousand MT
Chrysanthemum	0.003	0.021	
Tuberose	0.003	0.058	
Marigold	0.020	0.088	
Total	0.032	0.223	

Source: "Report from the Directorate of Horticulture Dept. of FPI & H, Govt. of W.B."

- ❖ Marigold is the most produced flower of the district (39.46%).
- ❖ Even area-wise Marigold tops the rank.

**Vegetables:**

---

*Table 4 Major Vegetable Production for Paschim Bardhaman*

---

<i>Name</i>	<i>Area in (Thousand ha)</i>	<i>Production in Crore Sticks (2023-24)</i>	<i>Unit</i>
<i>Onion</i>	<i>1.2</i>	<i>26.41</i>	Thousand MT
<i>Brinjal</i>	<i>1.428</i>	<i>25.675</i>	
<i>Ladies Finger</i>	<i>1.798</i>	<i>19.81</i>	
<i>Pumpkin</i>	<i>0.726</i>	<i>11.688</i>	
<i>Pointed Gourd</i>	<i>1.039</i>	<i>9.951</i>	
<i>Cucumber</i>	<i>0.668</i>	<i>9.124</i>	
<i>Bottle Gourd</i>	<i>0.97</i>	<i>8.749</i>	
<i>Cauliflower</i>	<i>0.207</i>	<i>4.74</i>	
<i>Cabbage</i>	<i>0.155</i>	<i>3.782</i>	
<i>Tomato</i>	<i>0.185</i>	<i>3.252</i>	
<i>Radish</i>	<i>0.288</i>	<i>3.105</i>	
<i>Green Chili</i>	<i>0.879</i>	<i>2.961</i>	
<i>Beans</i>	<i>0.605</i>	<i>2.89</i>	

Source: "Report from the Directorate of Horticulture Dept. of FPI & H, Govt. of W.B."

- ❖ Onion is the most produced vegetable of the district (20%), followed by Brinjal (19%) and Ladies Finger (15%).

## 9. INDUSTRIAL PROFILE

Paschim Bardhaman is a heavily industrialized district of West Bengal, known for its rich mineral resources and a robust network of heavy and micro, small, and medium enterprises (MSME). The industrial landscape is concentrated in the Asansol-Durgapur belt and is defined by several key sectors.

### ***Key industries and economic drivers***

#### Iron and steel

- Major hub for secondary steel: The district is a major producer of iron and secondary steel products in eastern India. The Durgapur industrial belt alone hosts over 136 secondary steel units, including sponge iron plants, steel melting units, and rerolling mills.
- Key players: Major steel plants include:
  - IISCO Steel Plant (Burnpur)

- Durgapur Steel Plant (SAIL)
- Alloy Steel Plant (Durgapur)

#### Coal and mining

- Coal reserves: The Raniganj coalfield, one of India's oldest and most extensive, forms the backbone of the district's industrial profile. This provides a consistent and affordable energy source for local industries.
- Heavy mining activity: The region is home to numerous coal mines, managed primarily by Eastern Coalfields Limited (ECL).

#### Power and energy

- Thermal power plants: Paschim Bardhaman hosts major thermal power plants, which are vital for the state's energy supply and attract energy-intensive industries.
- Notable installations: The Durgapur Thermal Power Station is a significant energy asset in the district.

#### Heavy engineering and manufacturing

- Railways: Chittaranjan Locomotive Works (CLW) is a major public-sector enterprise that manufactures electric locomotives for Indian Railways.
- Historical importance: Other heavy engineering firms, such as the Mining and Allied Machinery Corporation (MAMC), have historically been important to the district's industrial legacy.
- Supporting industries: The larger plants have fostered a vast ecosystem of smaller engineering and fabrication units that provide support services.

#### Chemicals

- Chemical production: Durgapur Chemicals Ltd. is a major producer of chemical products, contributing to the district's diversified industrial base.

- Carbon black: The presence of companies like Philips Carbon Black further highlights the significance of the chemical sector<sup>11</sup>.

### ***Industrial Parks***

Paschim Bardhaman features several key industrial parks that cater to a range of industries, from heavy manufacturing to logistics and information technology<sup>12</sup>

- **Bengal Aerotropolis Project at Durgapur**

The Aviation sector is all set to have a new look in the industrial canvas of West Bengal. WBIDC which plays a pioneering role in provision of industrial infrastructure in West Bengal has entered into a Joint Venture Development Agreement (JVDA) with Bengal Aerotropolis Projects Ltd. (BAPL) in 2008 to set up Durgapur Aerotropolis in DURGAPUR-ASANSOL region in Burdwan district of West Bengal. Durgapur Aerotropolis, with state-of-art industrial, urban and social infrastructure will house apart from a green field Airport, aviation-intensive businesses and related enterprises, clusters of business parks, logistics parks, industrial parks and a township. Durgapur Aerotropolis will be **India's first Aerotropolis project and first privately owned merchant airport.**

- Located at a distance of 160 km from Kolkata, Durgapur city is the home to some of the largest industrial units in the state, Durgapur Steel Plant, an integrated steel plant of SAIL; Alloy Steels Plant of SAIL and CMERI, a CSIR laboratory.
- **Panagarh Industrial Park at Panagarh**

West Bengal Industrial Development Corporation Limited (WBIDC) is setting up a modern Industrial Park over 1466.099 acres at Panagarh in Burdwan district. Panagarh-Kanksa belt is a favorable destination for industries due to the availability of industrial infrastructure and climate. Recently Panagarh is emerging as one of the finest places of technical education. Already 2 major engineering and management Institutes (DIATM & AIEM) are running under the belt of Panagarh. Both the Indian Army and Air Force have their establishment at Panagarh. An airport is also located

---

<sup>11</sup> District website of Paschim Bardhaman, NABARD Report of Paschim Bardhaman District, 2019-20

<sup>12</sup> Data compiled from West Bengal Industrial Development Corporation

here which is extensively used by Indian Air Force. It is well connected with road and railway. Sufficient power is available for the prospective industries at the park.

- ❖ The park is well connected by railways. The nearest railway station is Panagarah at 0.8 Km from site.
- ❖ The site is bounded by National Highway No: 2 connecting it to the Delhi. Site is also connected with NH - 34 and Panagarh-Moregram State Highway.
- ❖ The anchor unit of the park M/s. Matix Fertilizers & Chemicals Ltd. has set up their unit in the park in approximately 498.49 acres of land.

- **Durgapur Industrial Estate, Ph-I**

Located at Jadavendra Panja Avenue, Durgapur, the Durgapur Industrial Estate, Ph-I was established in 1974. The estate has nearby connectivity to Durgapur Railway station and to the Kazi Nazrul Islam Airport at Andal.

The estate is maintained by WBSIDC.

The estate is based over a total area of 20.14 Acres. There are 65 plots and 32 Sheds in it. The number of functioning units in the industrial estate is 32, while, there are 14 non-functional units.

Mainly, the estate's operations focus upon **Fabrication job and Engineering work.**

It employs 200 people directly and about 190 people are indirectly employed under the estate.

- **Durgapur Industrial Estate, Ph-II**

Durgapur Industrial Estate, Ph-II, is another industrial organisation set up by WBSIDC. Established in 2010, this industrial estate is situated over 27.34 Acres of land, with accessibility to the nearby railway station, Durgapur. It also has nearby access to National Highway 2, (under 10 km) and to the Airports of Durgapur and Kolkata.

There are 59 Plots in it.

- **Durgapur Industrial RIP**

Durgapur Industrial RIP, located near Durgapur Industrial Estate – I, was established in 1968, with similar connectivity to Rail, Road and Air transportation opportunities.

It is located over 12.43 Acres of land. The specialisations of this organisation are, Engineering and Fabrication, Rice Mills, Flour Mills Etc. It has 77 Plots in it, with 43 functioning units and 08 non-functioning ones. It is maintained by By WBSIDCL.

The association employs 200 people directly while 370 people are employed under it indirectly.

- **Durgapur Industrial EPIP**

Located in Banscopa, this organisation was established in 2004. Conectivity to Highways, Railways and Airports are the same as previous ones.

The setup is over 4.36 Acres of land. It has 4 plots, 2 Functioning units and 1 non-functioning unit. Its specialization is Engineering Production. Direct employment under it is 15 people while, indirectly, 20 people are employed here.

### ***MSME Clusters***

Paschim Bardhaman's Micro, Small, and Medium Enterprise (MSME) clusters are concentrated around the district's key industrial sectors. Unlike the large-scale industrial plants, these MSMEs are characterized by local, smaller-scale production and often provide ancillary support to larger industries. Table A6 in Annexure provides the detailed data of the MSME clusters present in the district. The insights are drawn from the data<sup>13</sup>.

- In Paschim Bardhaman, there are four clusters of MSME. Two of those belong to the Clay & Ceramic industry while, one is for Metal Fabrication & Furniture and the other being from Textiles & Readymade Garments.
- The Red Bricks – Clay & Ceramic cluster dominates both in terms of the number of units and employment. It has 70 units and employs 6000 people.
- The second largest cluster also belongs to the same industry, named Refractory Bricks Cluster, having 34 units and employment of 1100 people.

---

<sup>13</sup> Data compiled from Directorate of MSME, Government of West Bengal

## 10.BANKING PROFILE

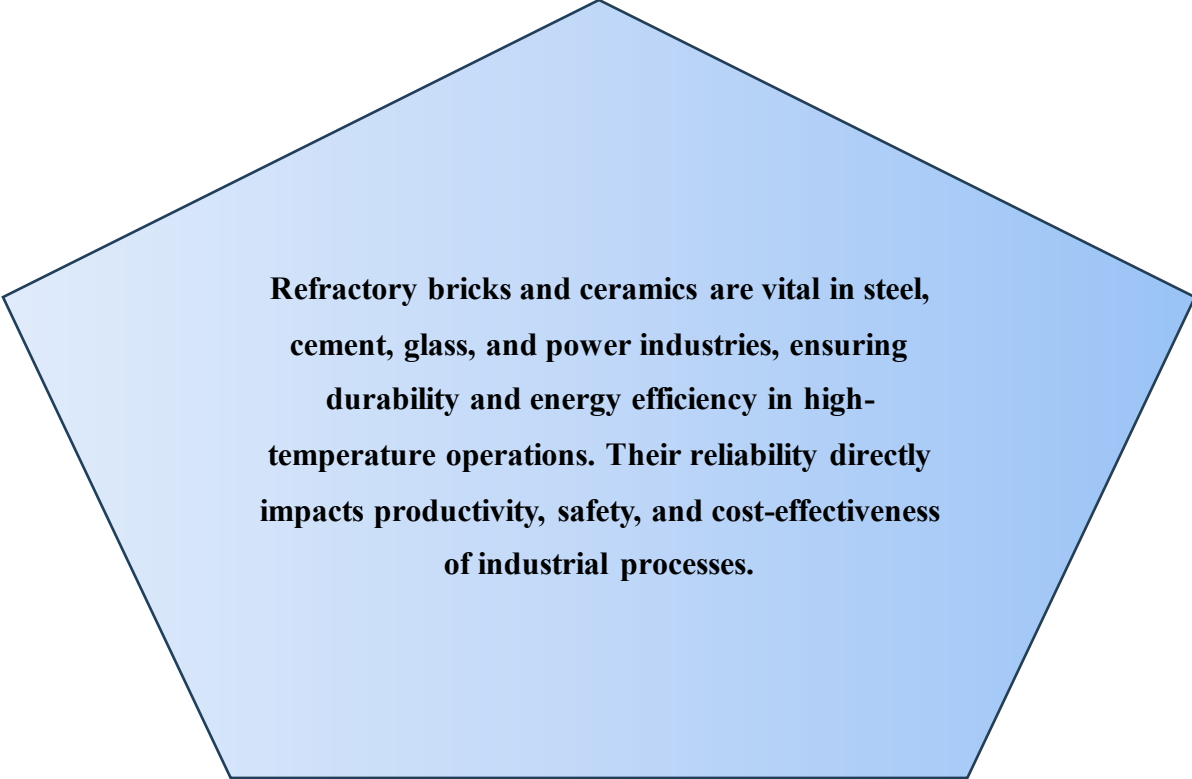
There are 368 branches of all categories of banks viz. Commercial Banks (320), Regional Rural Banks (RRBs) (14), Cooperatives (Short Term -12, Long Term - 2, Primary Agriculture Cooperative Society - 20) and others including private sector banks in the district.

The **State Bank of India** is the **Lead Bank** of the district.

The **CD Ratio** (CDR) during the last few years is a **matter of concern** for the banking fraternity. Despite various efforts and measures undertaken, the CD Ratio of the district hovers **barely over 40%**. It is suggested that unless Banks pro-actively come forward and finance small and micro projects as well as SHG and JLG finance, issue KCC, Weavers' Credit Cards (WCC), etc. the CD ratio will not rise.<sup>14</sup>

## 11.ODOP SECTOR OF THE DISTRICT

Going in perfect parity with the industrial and mining sectors of Paschim Bardhaman, the identified ODOP sector for the district is,



**Refractory bricks and ceramics are vital in steel, cement, glass, and power industries, ensuring durability and energy efficiency in high-temperature operations. Their reliability directly impacts productivity, safety, and cost-effectiveness of industrial processes.**

---

<sup>14</sup> Data taken from NBARD [PLP](#) 2024-25

## 12.EXPORT POTENTIALITY AND PROSPECTS FROM THE DISTRICT

Back-up of the industrial infrastructure, for the district's export is evident from the export basket of Paschim Bardhaman. Except for one agricultural product, all the components of the export basket are industry based.

The total export value of the district has risen from 72.35 billion INR to 73.44 billion INR, a **growth of 1.51%**, during 2022-23 to 2024-25.

The products exported from Paschim Bardhaman are,

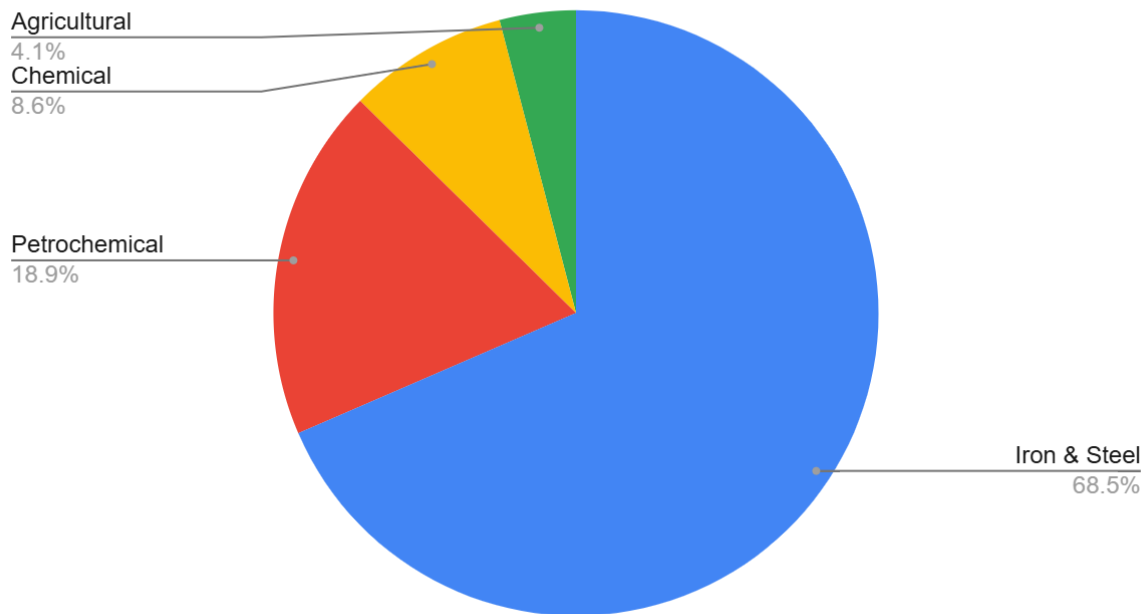
*Table 5: Exports from Paschim Bardhaman*

ITCHS Code	Item_Description	Sum of Value (INR Billions)
72023000	Ferro-Silico-Manganese	13.52
72021100	Fero-Manganese,Carbon Contng>2% By Weight	11.29
27111990	Gaseous Hydrocarbons, Liquefied, N.E.S. (Excluding Natural Gas, Propane, Butane, Ethylene, Propylene, Butylene And Butadiene): Other	8.33
72021900	Other Ferro-Manganese	7.10
85451100	Electrodes Of A Kind Used For Furnaces	5.22
72024900	Other Ferro-Chromium	4.66
28030010	Carbon Blacks	3.14
72071920	Mild Steel (M.S.) Billets	2.90
10063090	Rice Excptg Parboiled (Excl Basmati Rice)	2.48
72024100	Ferro-Chromium Carbon Contng>4% By Wt	2.22

Source: [Ministry of Commerce and Industry](#)

Hence, Ferro-Silico-Manganese is the top most exported product for the district, with a share of 22.21%.

## % Share



**Fig: 4 Sectoral Composition of Export Basket of Paschim Bardhaman**

- ❖ Notice that the Iron & Steel industry not only tops the table of individual product export records for the district, but also, is the major industry for the district, contributing 68.5% of the total exports.
- ❖ The Petro-chemical and Chemical industries have taken 18.9% and 8.6% respectively, followed by a negligible share of the Agricultural sector, for 4.1%.
- ❖ Together the Petro-chemical and the Chemical Industries constitute about 27.43%, which could serve as a strong back-up to the Iron & Steel industry.

### *Product Market Analysis*

In this section we highlight the products having potential for the new entrants and report the product trends behaving in an abrupt non-linear fashion.

The **Ferro-Silico-Manganese** given by **72023000** have a stable market, for both Indian supply and Global demand.

The Indian export product of **Ferro-Manganese** given by HS code **72021100**, has risen by 163.89% in the long term (2020-2024). The imports have also grown by 25.99% providing assurance regarding potential expansion of the whole market.

The Indian export of **Gaseous Hydrocarbons** given by code **27111990**, has hiked by 183.28%, supported by increment in global import demand by 63.82% in the long term. India is the fourth most exporter of the product, globally. However, top globally importing markets like Turkiye, Philippines and Poland are not in the top five markets India exports to.

The Indian exports of **Ferro-Manganese** compound given by **72021900**, has risen by 211.39%, coupled with a global increase in demand by 21.54%.

The market for **Electrodes** given by HS code, **85451100**, has not been stable in the long-run. Despite the fall in global demand by 35.18%, there has been growth in Indian exports, by 19.82%.

The **Ferro-chromium** product given by **72024900**, has a great future potential, in terms of Indian exports; as the same has grown by a huge 2506.50% in the duration of 5 years. The global demand has also risen by 55.81%.

There has also been rise in the Indian exports of **Carbon Blacks**, given by **28030010**, by 353.04% and the global import demand has risen by 68.94%. India's 3<sup>rd</sup> rank in the global exporter's list backs-up this data.

The Indian exports for **Semi-finished products of iron or non-alloy steel** given by **72071920**, has fallen by 89.09%, although, the global demand has risen by this time by 15.33%. The top importers of the product are not all tapped in by the Indian suppliers, as can be observed in Table 12.2. India is at the fourth rank, exporting this product, globally. Moreover, It is also to be noted, that **India itself** is a top importer, considered globally, for the product.

The **Rice** product given by **10063090** has prospects in the global market, given by the increase in global import demand by 47.17%, while the Indian exports has actually decreased by 13.84%. It is also observable, that except for Malaysia, no other member of the top importer's list are included in India's exporting list.

The market indicators of **Electrodes** of graphite or other carbon, for electric furnaces, given by the HS codes, **85451100**, **Ferro-Chromium (72024100)** and **Ferro-Chromium (72024100)** are growing at decent rates.

Further details regarding the market statistics can be found in Table 6

Table 6: Export Potentiality Analysis of the District (Unit: USD Millions)

Export Status	HS Code	Product Details	Exported value in 2020	Exported value in 2021	Exported value in 2022	Exported value in 2023	Exported value in 2024	Export growth of India in five years (in %)	World Import Growth of the sector @ 6 digit in five years (in %)	Top five importers of India	Top ten importer of the sector @ 6 digit in world market	India's rank in world exporter list of the sector
Currently exporting from the district	72023000	Ferro-silico-manganese	602.12	1273.793	1612.735	1077.913	1021.978	69.73	27	Japan, Egypt, UAE, Italy, Taipei	United States of America, Türkiye, Japan, Italy, Germany, Korea, Indonesia, Egypt, United Arab Emirates, Taipei	1
	72021100	Ferro-manganese, containing by weight > 2% of carbon	200.809	625.49	603.453	490.527	529.905	163.89	25.99	UAE, Korea, USA, Türkiye, Canada	United States of America, United Arab Emirates, Germany, Taipei, Korea, Italy, Poland, Japan, Türkiye, Canada	1
	27111990	Gaseous hydrocarbons, liquefied, n.e.s. (excluding natural gas, propane, butane, ethylene, propylene, butylene and butadiene): Other	143.76	373.67	480.786	382.387	407.247	183.28	63.82	Nepal, Sri Lanka, Bhutan, Canada, Nigeria	Türkiye, Pakistan, Philippines, Ukraine, Poland, Nepal, Sri Lanka, Viet Nam, Mexico, Malaysia	4
	72021900	Ferro-manganese, containing by weight <= 2% carbon	68.927	190.007	262.691	123.414	214.629	211.39	21.54	USA, Netherlands, turkiye, Korea, Italy	United States of America, Netherlands, Germany, Türkiye, Canada, Italy, Brazil, Korea, Republic of Poland, France	1

85451100	Electrodes of graphite or other carbon, for electric furnaces	185.128	236.886	289.058	267.202	221.819	19.82	-35.18	USA, Egypt, Turkiye, Korea, Saudi Arabia	Iceland, United States of America, Italy, Turkiye, United Arab Emirates, Korea, Russian Federation, Germany, Egypt, Canada	4
72024900	Ferro-chromium, containing by weight <= 4% of carbon	3.708	11.42	34.38	92.732	96.649	2506.50	55.81	Netherlands, Korea, UAE, USA, Japan	United States of America, Japan, Korea, Germany, Saudi Arabia, Netherlands, Belgium, Austria, Taipei, Spain	3
28030010	Carbon (carbon blacks and other forms of carbon, n.e.s.): Carbon blacks	105.443	259.004	318.425	377.06	477.698	353.04	68.94	USA, Sri Lanka, Thailand, UAE, Viet Nam	China, Thailand, United States of America, Turkiye, Viet Nam, Poland, Indonesia, Germany, Belgium, Japan	3
72071920	Semi-finished products of iron or non-alloy steel containing, by weight, < 0,25% of carbon, of circular cross-section, or of a cross-section other than square or rectangular: Mild steel (m.s.) billets	1268.996	1633.242	728.235	269.555	138.424	-89.09	15.33	Nepal, Saudi Arabia, Taipei, Sri Lanka, Bhutan	Egypt, Indonesia, Saudi Arabia, Taipei, Guatemala, Nepal, India, Romania, Tanzania, Italy	4
10063090	Semi-milled or wholly milled rice, whether or not polished or glazed: Rice excptg parboiled (excl basmati rice)	1333.614	1971.926	2123.723	1350.738	1148.999	-13.84	47.17	Cameroon, Viet Nam, Malaysia, Kenya, Guinea	Indonesia, Philippines, Saudi Arabia, Iraq, United States of America, Malaysia, Côte d'Ivoire, Iran, United Arab Emirates, Benin	1
72024100	Ferro-chromium, containing by weight > 4% of carbon	597.195	979.958	929.47	1067.734	657.542	10.11	54.87	China, Korea, Taipei, Japan, Netherlands	China, Indonesia, Japan, United States of America, Korea, Belgium, Germany, Netherlands, Taipei, Spain	3

Source: Data compiled from [Trademap](#)

## 13.SWOT ANALYSIS

Studying and examining the different aspects of the district and collecting data from the primary and secondary sources and the focus group discussions conducted in the district, the SWOT Analysis of the district in terms of export development has been depicted below

<p><b>STRENGTHS</b></p> <ul style="list-style-type: none"> <li>• Rail, Road &amp; Air Connectivity</li> <li>• Presence of active privately managed Inland Container Depot.</li> <li>• Private Fright Terminals in Durgapur enables free flow of multi modal logistics.</li> <li>• Two hubs of extraction and processing of raw material and industrial operations</li> <li>• Presence of big PSUs like SAIL and ECL leading to active industrial town.</li> <li>• Full value chain operations in steel industry activated with the presence of steel fabricators, Steel rolling mills, re-rolling mills and manufactures of refractory bricks.</li> <li>• Availability of skilled workforce</li> </ul>	<p><b>WEAKNESSES</b></p> <ul style="list-style-type: none"> <li>• High risk district for environmental degradation due heavy mining and steel production units.</li> <li>• Land degradation and deforestation in sonpur and kumardihi areas of the district.</li> <li>• Heavy economic dependence on steel manufacturing and mining activities.</li> <li>• Illegal mining activities in abandoned and uneconomic mines</li> <li>• The bigger units overshadow the MSMEs and make them captivated suppliers.</li> <li>• MSME clusters are majorly servicing the bigger units like ancillary industries.</li> <li>• Requirement of Export Facilitation and International Marketing Assistance</li> <li>• The endorsed ODOP products of the district do not have much export prospects.</li> <li>• Idle resources of industrial estates/parks yet to be filled</li> </ul>
<p><b>OPPORTUNITIES</b></p> <ul style="list-style-type: none"> <li>• Growing international market for iron &amp; Steel and Petro-Chemical products.</li> <li>• E-commerce exports are gaining momentum</li> </ul>	<p><b>THREATS</b></p> <ul style="list-style-type: none"> <li>• Steel and coal-based industries are classified as high-risk industry for environmental degradation and climate change.</li> </ul>

<ul style="list-style-type: none"> <li>• Supportive schemes of both the Central and State Governments for exports</li> <li>• Back-up of the agricultural sector</li> </ul>	<ul style="list-style-type: none"> <li>• Increasing compliance requirements for sustainability and ESG practices in International business.</li> <li>• Usage of sustainability parameters as NTBs in Exports by various countries.</li> <li>• Lack of facilities in the clusters leading to migration of value addition to other districts/states</li> </ul>
--	--

### **14.EXPORT CHALLENGES OF THE DISTRICT**

Paschim Bardhaman district is the Industrial district of West Bengal, predominantly based on steel industry. on agricultural products majorly Rice. The major contributions for exports from the district is accounted by Iron &Steel (68.5%). This is followed by Petro chemical and Chemical products (27.5%). The exports are majorly done by the big firms in the district supported by the MSME units. The district is adequately supported by LCS and PFT. The major export challenge for the MSMEs in the district is entrepreneurship for exports. Moreover, the MSMEs are more focussed on steel and related products without pursuing any diversification.

**Infrastructure and logistics**

- Warehouse and cold storage facilities: The district uses the cold storage facilities for potato and warehouses for rice from the Purba Bardhhaman district.
- The district has Industrial estates and parks rather than clusters. The clusters are majorly in clay and ceramics. Some of the industrial estates and parks are less occupied.
- The infrastructure and logistics for export of steel and coal are sufficient due to the presence of LCS and PFT managed by Private firms.
- Transport: The district has one of the most robust transport facilities in the state which promotes economic activities to a larger extent. It has good road and rail connectivity and PFT helps connectivity to the ports also.

## **Market access and finance**

- Difficulty reaching export markets: MSMEs, particularly in steel and steel related products function as captive units for bigger firms and face difficulties in accessing international markets due to lack of awareness which not only denies direct export but also fetches low price. The rice export from the district is carried out majorly by traders.
- Limited access to formal credit: Financing challenges, such as high initial investment costs for upgrades to infrastructure or technology, are significant barriers for many small steel/ fabrication units. Most of the MSMEs avail trade and supplies credit as provided by the buyers of bigger units.
- Weak export strategy: Though government initiatives exist to boost exports, there are gaps in the district-level execution of a robust strategy for products with high export potential mainly for product diversification.
- The SEFC should make specific interventions to implement the district level initiatives.

## **Operational and Environmental challenges**

- Climate change impacts: As the district poses high risk for environmental degradation due heavy mining and steel production units, land degradation and deforestation occur and contribute to climate change and lowering of the water table.
- Irregular rainfall, frequent floods, and climate changes significant risks to both agriculture and mining sectors.. Unpredictable weather directly disrupts crop yields.
- Lack of modern technology: The MSME manufacturing units being captive suppliers are devoid of pressure for innovation and lack modern machinery and technological knowledge to improve productivity and innovative products.

## **15.GIST OF THE ANALYSIS**

The following are the salient points which emerge from the above discussions:

- The major export of the district is contributed by Iron and Steel products which accounts for around 68.5% of the total exports as reported in the year 2024-25, followed by 27.5 % of Chemical and Petrochemical products. Though the district hosts industrial clusters for ceramic and clay products their export contribution is minimal.
- Opportunities for value added exports of engineering and fabricated products are high.
- The district has sufficient warehouse and cold storage facilities majorly for rice and potato utilised from Purbo Bardhaman but lacks proper modern facilities.
- Several units located in the clay and ceramic clusters are majorly acting as feeder units for bigger firms in the district.

## 16.EXPORT ACTION PLAN SUGGESTED

Based on the above facts, analysis of the data and the input from the stakeholders, the following action plan is suggested. The action plan also indicates the desired output of the strategic actions, the responsible agency and the proposed intervention/tool for implementation. It has also been highlighted the activity/activities where a DPR may be required.

Strategic Action	Output Desired	Suggested Agency	Instrument/Intervention
Revamping the industrial clusters and units in the Industrial estates/parks for product diversification.	Boosting direct exports of MSMEs in Engineering and Steel sector	MSME&T, WB	MSME&T, WB may organise special programmes for the MSMEs in steel and fabrication towards the direct opportunities for exports in association with EEPC, FIEO and SEFC.
Operational issues at the Industrial Parks	Increased capacity utilization of Industrial Parks for exports	State Govt	The Industrial parks in Durgapur is still underutilised due to operational constraints. The State Govt may intervene with the concerned government agencies for the full utilisation of the capacity created in these parks and may encourage the industrial units undertaking product diversification.

Foreign Post office facility in for E com Exports	Ease of E-Com exports through Dak Niryat Kendra	Postal Dept. + Customs	Mobile foreign post office visiting the district on designated days
Strengthening the processes of Warehouse and Cold Storage facilities available in the district for potato and rice.	Utilization by other agricultural producers with value added services for testing, packing and packaging etc	State Govt	The Warehouses may provide licensed or franchised testing and cold storage services to the other suitable products. They may also utilise packaging services through empanelled vendors.
Handholding for direct exports of MSMEs	Increased direct exports from the state	State Govt + GoI	Use acceleration services by institutions like IIFT under suitable schemes. The State Govt. may also launch export incubation fund for supporting the Direct Exports.
Product and district specific capacity building on exports of MSMEs	Direct exports from MSMEs to diverse markets	State Government	The existing SEFC should undertake time bound product and district specific capacity building of MSMEs in Engineering products.

## 17. Annexure

*Table A1: Collectorate Office*

<b>Name</b>	<b>Designation</b>
Shri Ponnambalam S. , IAS	District Magistrate & District Collector
Ms.Subashini E ,IAS	Additional District Magistrate(General)
Shri Prashant Raj Shukla, IAS	Additional District Magistrate & Additional Executive Officer, Paschim Bardhaman ZP
Shri Sanjoy Paul, WBCS(EXE)	Additional District Magistrate(Development)
Shri Aranya Banerjee, WBCS(Exe)	Additional District Magistrate(L & LR)

Source: [Paschim Bardhaman](#)

*Table A2: Subdivisions*

<b>SUBDIVISIONS</b>	<b>BLOCKS</b>
<u><a href="#">Asansol Sub Division</a></u>	1. <u><a href="#">Raniganj</a></u> 2. <u><a href="#">Jamuria</a></u> 3. <u><a href="#">Salanpur</a></u> 4. <u><a href="#">Barabani</a></u>
<u><a href="#">Durgapur Sub Division</a></u>	1. <u><a href="#">Andal</a></u> 2. <u><a href="#">Pandabeswar</a></u> 3. <u><a href="#">Faridpur Durgapur</a></u> 4. <u><a href="#">Kanksa</a></u>

Source: [Paschim Bardhaman](#)

*Table A3 : Blocks*

<b>Sub Division</b>	<b>Block</b>	<b>Police Station</b>	<b>Block Address</b>
Asansol	Raniganj	Raniganj	Block Development Officer, Raniganj P.O – Searsole Rajbari Dist : Burdwan PIN : 713 358 Phone : 8170018243
Asansol	Jamuria	Jamuria	Block Development Officer, Jamuria Vill.+ P.O. – Bahadurpur Dist : Burdwan PIN : 713 362 Mobile : 8170018241 Phone : 0341-2667047
Asansol	Barabani	Barabani, Asansol (North)	Block Development Officer, Barabani P.O – Domahani Bazar Dist : Burdwan PIN : 713 334 Phone : 0341-2772647
Asansol	Salanpur	Chittaranjan, Salanpur	Block Development Officer, Salanpur P.O. – Rupnarayanpur Bazar Dist : PaschimBardhaman PIN : 713386 Phone : 0341-2530243
Durgapur	Durgapur Faridpur	Faridpur-Durgapur, New Township	Block Development Officer, Faridpur-Durgapur Vill.+ P.O. – Loudaha Dist : Burdwan PIN : 713 385 Phone : 0341-2670600
Durgapur	Andal	Andal, Pandabeswar, Durgapur Coke Oven	Block Development Officer, Andal Vill. – Andal More, P.O. – Andal Dist : Burdwan PIN : 713 321 Phone : 0341-2373448

Durgapur	Kanksa	Kanksa	Block Development Officer, Kanksa Vill. – Izzatganj, P.O. – Panagarh Bazar Dist : Burdwan PIN : 713 148 Phone : 0343-2524504
Durgapur	Pandabeswar	Pandabeswar, Andal	Block Development Officer, Pandabeswar Vill.+ P.O. – Pandabeswar Dist : Burdwan PIN : 713 346 Phone : 0341-2677506

Source: [Paschim Bardhaman](#)

*Table A4 Cold Storages in the District*

S.No.	Name of the Cold Storage	Type of Cold Storage	Total Capacity
1	Jay Maa Kali Cold Storage Pvt. Ltd.	Potato	
2	Durgamata Cold Storage	Potato	178226 qtl
3	Khajurdhi Samabaya Cold Storage	Potato	5600 mt
4	Khajurdhi Samabaya Cold Storage	Potato	5600 mt
5	Krisak Kalyan Samabay Himghar Ltd.	Multipurpose	Potato-210000 pkcts, Egg-12000 box
6	Magra Cold Storage Pvt. Ltd.	Potato	
7	Vikrampur Cold Storage Pvt. Ltd.	Potato	
8	Agrasen Cold Storage Pvt. Ltd.	Potato	
9	Kunurika Bahumukhi Samabay Himghar	Multipurpose	10000 mt
10	Sivashanti Cold Storage Pvt. Ltd.	Potato	100000 qtl
11	Kalyan Cold Storage	Potato	108000 qntl
12	Ramaswarpur Cold Storage (P) Ltd.	Potato	112293 qtl
13	Satimata Himghar.	Potato	2,91,122 Packets
14	Seva Cold Storage	Potato	260000 qntl
15	E.R Cold Storage Pvt. Ltd.	Potato	377000 pkt
16	Sri Krishna Potato Storage (P) Ltd.	Potato	780 mt
17	Annapurna cold storage.	Potato	94,191 qtl.
18	B. D. Cold Storage	Potato	
19	Mahamaya Cold Storage Pvt. Ltd.	Potato	
20	Shridharpur Co-Op Bank Cold Storage	Potato	
21	Kailash cold storage pvt.ltd.	Potato	1,50,600 qtl.

22	Rasulpur Cold Storage	Potato	105000 bags
23	Dakhin Damodar Cold Storage	Potato	190000 Bags
24	Dharmaraj Cold Storage Pvt. Ltd.	Potato	280000 bags
25	Shri Jagannath Cold Storage	Potato	280000 qtl
26	Satyanarayan Cold Storage Pvt. Ltd.	Potato	398000 bags
27	Bengal cold storage.	Potato	79602 qtl.
28	Ankur Cold Storage	Potato	958
29	Shivasakti Cold Storage	Potato	959
30	Kalna- II CADP F.S.C.S	Potato	1000
31	Kali Mata Cold Storage	Potato	1052
32	M/S Kalyan Stores (Dhatrigrām) Pvt. Ltd	Potato	1083
33	Ambika Himghar Pvt. Ltd.	Potato	1114
34	Rameswarpur Cold Storage	Potato	1122
35	Bulbulitala Cold Storage	Potato	1150
36	Mogra Cold Storage	Potato	1157
37	Singerkone Maa Annapurna Cold Storage & Agro Projects (P) Ltd.	Potato	1200
38	Hemanta Cold Storage	Potato	1238
39	Kamal Cold Storage	Potato	1269
40	Rajrajeswar Cold Storage	Potato	1378
41	Debnath Cold Storage	Potato	1400
42	Baidyapur Himghar	Potato	1400
43	Guptipur Cold Storage	Potato	1405
44	B. D. Cold Storage	Potato	1686
45	Agrasen Cold Storage	Potato	1960
46	Khalishpur Cold Storage	Potato	2037
47	Biswanath Cold Storage	Potato	3000
48	Kalna- II CAMS	Potato	3442
49	Samudragarh Cold Storage	Potato	3950
50	Krishi Vikash	Potato	4000
51	Satima Cold Storage	Potato	4494
52	Golock Cold Storage	Potato	5977
53	Joy Makali Cold Storage	Potato	6500
54	Kulti Samabay Cold Storage	Potato	6653
55	Shri Krishna Potato Storage Private Ltd.	Potato	7800
56	Memari Cold Storage	Potato	9000
57	Utra Cold Storage	Potato	9568
58	Kalna Cold Storage	Potato	9895
59	Boharia Ice & Cold Storage	Potato	42095
60	Sree Hanuman Ice & Cold Storage	Potato	101000 bags
61	Shree Durga Cold Storage Pvt. Ltd.	Potato	138887 qtl

62	Semia Jain And Com	Potato	192964 qtl
63	Shamali Cold Storage	Potato	288000 packets
64	Samudragarh Cold Storage	Potato	400000 bags
65	Katwa Cold Storage	Potato	66482 qtl
66	Bedia Cold Storage Pvt. Ltd.	Potato	8000 MT
67	Jawala Cold Storage	Potato	92000 qtl
68	Himalaya Cold Storage	Potato	98000 qtl
69	Satima Cold Storage	Potato	
70	Burdwan Cold Storage Pvt. Ltd.	Potato	
71	Memari Cold Storage	Potato	
72	BhulbhuliTalla Cold Storage Pvt. Ltd.	Potato	
73	Biswanath Cold Storage	Potato	
74	Shyam Ali Cold Storage Pvt. Ltd.	Potato	
75	Paharhati Outtar Memari Co-Operative Cold Storage	Potato	
76	Kalimata Cold Storage	Potato	
77	Guptipur Cold Storage	Potato	
78	Shakti cold storage .	Potato	227000 bag
79	Tirupati cold storage (P) ltd.	Potato	391000 Packets
80	Moyangori Cold Storage Pvt. Ltd.	Potato	
81	Jayanti Cold Storage	Potato	

Source: [National Horticulture Board](#)

**Table A5: Crop Cultivation of Paschim Bardhaman**

Sl. No.	Crop	Area (Hectare)	Production (Tonnes)	Yield (Ton./Ha.)
1	Rice	18895	55067	2.91
2	Potato	272	9731	35.78
3	Maize	894	5800	6.49
4	Rapeseed & Mustard	3135	2852	0.91
5	Sugarcane	33	2607	79
6	Wheat	709	1651	2.33
7	Masoor	1313	1238	0.94
8	Gram	566	795	1.4
9	Khesari	722	772	1.07
10	Sesamum	420	375	0.89
11	Groundnut	230	246	1.07
12	Mesta	16	227	14.19
13	Moong(Green Gram)	138	158	1.14
14	Peas & beans (Pulses)	78	83	1.06

15	Arhar/Tur	26	41	1.58
16	Urad	33	24	0.73

Source: [Directorate of Economics and Statistics](#)

*Table A6: MSME Clusters of Paschim Bardhaman*

Cluster Sector	Name of the Cluster	Activity of Cluster	Name of Unit/Weaver/Artisan	No. of Employees
Clay & Ceramic	Red Bricks		70	6000
Metal Fabrication & Furniture	Jamuraia Steel Fabrication Cluster Industrial Cooperative Society Ltd.	Gate, Grill And Steel Fabrication	18	208
Textiles & Readymade Garments	Durgapur Kathastich Cluster		25	75
Clay & Ceramic	Refractory Bricks Cluster		34	1100

Source: [Directorate of MSME, Govt. of West Bengal](#)

*Table A7: FGD Remarks*

Product	Physical Core	Infra	Physical Support	Infra	Soft Infrastructure	Others	Activities
Makhana					Packaging Unit required, Training on Exports & Marketing Assistance		
Spices					Marketing Assistance is required	Lab Testing Unit Required	

Glass		Turn Around Time in Port is very high leading to delay in carriage	Marketing Assistance is required	Knowledge of Central Govt. Subsidy Schemes is required	
Aluminium		Turn Around Time in Port is high, leading to higher freight movement charges	Marketing Assistance is required	Needs better Customs Clearance Management, Want equalization of Freight movement Charges & cost effective charges	
Casting (Manhole)			Marketing Assistance is required		
Food Processing			Knowledge for Export Process & Documentation, Marketing Assistance is required	Wants Packaging Unit & Lab Testing facilities	