

# DISTRICT PROFILE

## NADIA



**CONTENTS**

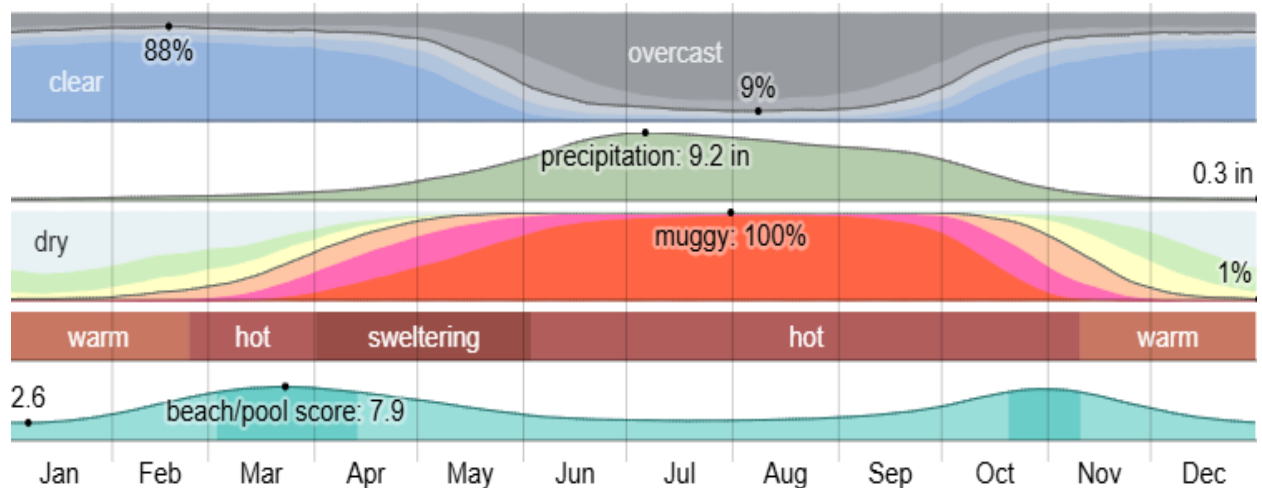
## 1. INTRODUCTION

**Nadia District** of West Bengal, lies in the Presidency division. It borders Bangladesh to the east, North 24 Parganas and Hooghly districts to the south, Purba Bardhaman to the west, and Murshidabad to the north.

Nadia is one of the oldest districts of West Bengal and the ancient Sanskrit learning centre. Nadia is an inseparable part of the religious and cultural history of the state. The traditional city of Krishnanagar is the headquarters of the District. It has a rich cultural and traditional heritage. The Tropic of Cancer divides the district in two parts.

## 2. CLIMATIC CONDITIONS

Nadia district has a sub-tropical climate with hot summers, high humidity, and significant rainfall during the monsoon season. The minimum temperature can drop around to 9 degrees and the maximum can reach upto 39 degrees. The average annual rainfall is approximately 1,467.5 mm.

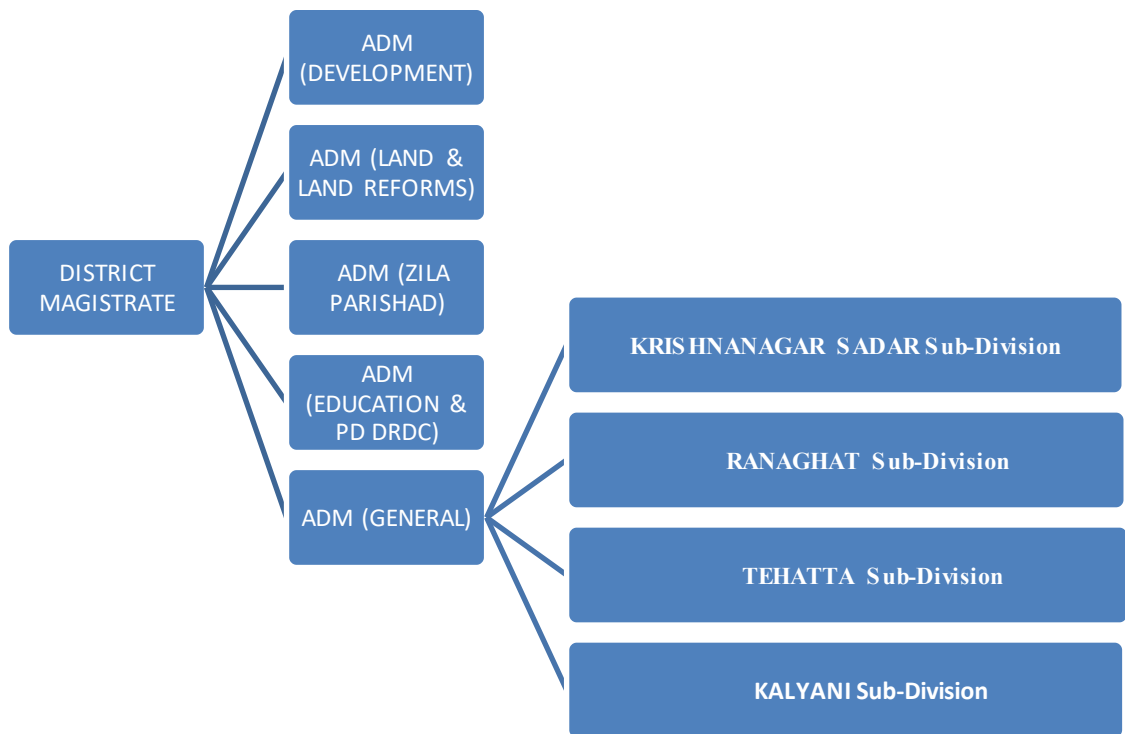


**Fig 1: Climatic Mapping of Ranaghat Town of Nadia District.**  
Source: Weather Spark

### 3. ADMINISTRATIVE PROFILE

The administrative setup of the district is led by the **District Magistrate cum Collector**. Under the District Magistrate, there are 5 Additional District Magistrates.

Nadia has **4 Sub-divisions**: Krishnanagar Sadar, Ranaghat, Tehatta & kalyani. Within these sub-divisions, there are **21 Police Stations** in total. Further, there are **7 Municipalities, 2 Municipal Corporations, 18 Community Development Blocks, 1069 Gram Panchayats, 14 Census Towns & 1681 Villages** under Nadia District. The distribution of the administrative order has been detailed below in Fig 2. The details of the same are given in the annexure (Ref : Table A1 and A2, in the ANNEXURE section).



**Fig 2: Administrative Flow of Nadia**

Source: Compiled from official website of Nadia, Govt. of West Bengal & DCMSME for Nadia.

#### 4. LOCATION AND GEOGRAPHY:

**Nadia is situated between 22°53" and 24°11" North latitude and 88°09" and 88°48" East longitude**, this District is linear in shape with orientation of North-South. The District is Approximately 46 ft. above the mean sea level. The Tropic of cancer divides the district in two parts.

The **geographical boundary of Nadia** district comprises **Bangladesh in the East, Bardhaman and Hoogly district on the West, Murshidabad district on the North and North West and North 24 Parganas towards South and South East.**

Situated on the main rail route connecting Howrah/Kolkata and New Jalpaiguri (NJP) including parts of North Eastern states, the Nadia district can easily be accessed by rail. The International Rail Link connecting India and Bangladesh passes through Nadia District with Gede as the last railway station at Indian Border.

The district is largely an alluvial plain, formed by the constant shifting of the various rivers of the Ganges Delta. To the west of the district is the Bhagirathi (or Hooghly) river, which was once the main distributary of the Ganga towards the Bay of Bengal, and is still considered to be the continuation of the Ganga for Hindus. As the main flow of the Ganga ran east into the Padma, the Bhagirathi largely dried up. Most of the rivers flowing through Nadia now have little water in them. Nearly all the district has been converted into farmland.

The major rivers are:

- The **Padma**, now the main distributary of the Ganga, touches the district on its northeastern end.
- The **Jalangi**, which flows from Murshidabad district, forms much of the northwestern border of the district with Murshidabad, before flowing south into Nadia district. Around Krishnanagar, it turns west and flows into the Bhagirathi near Nabadwip.
- The **Mathabhanga** originates in the far northeast of the district and forms part of the border with Bangladesh. It then flows into Bangladesh until it, again forming part of the border, re-enters the district at Gede.
- At **Maijdia**, it splits into the Churni and Ichamati. The Churni flows southwest and merges with the Bhagirathi at Shibpur near Ranaghat. The Ichamati flows into Bangladesh near

Mubarakpur and reenters India near Duttaphulia. It then flows south into North 24 Parganas district.

## 5. DEMOGRAPHY

According to the 2011 census Nadia District has a **population of 5,167,600**. The district has a **population density of 1316 inhabitants per square kilometer**. Its population growth rate over the decade 2001-2011 was 12.24%.

Nadia has a **sex ratio of 947 females for every 1000 males**, and a **literacy rate of 75.58%**. 27.84% of the population lives in urban areas.

**Education Index of this district is 0.74**. Scheduled Castes and Scheduled Tribes make up 29.93% and 2.72% of the population respectively.

Bengali is the predominant language spoken by 98.02% population.

**The demographic distribution of Nadia is given by the following data:**

**Table: 1 Major Demographic Distribution of Nadia**

Unit: Population in Lakhs

PARAMETERS	TOTAL	RURAL	URBAN
Number of Households	12.32	8.83	3.49
Total Population (Persons)	51.68	37.29	14.39
Total Population (Males)	26.54	19.21	7.33
Total Population (Females)	25.14	18.08	7.06
Literates (Persons)	34.81	23.54	11.26
Literates (Males)	18.79	12.81	5.97
Literates (Females)	16.02	10.73	5.29
Total Workers (Persons)	18.43	12.91	5.52
Total Workers (Males)	15.54	11.21	4.33
Total Workers (Females)	2.89	1.69	1.19
Agricultural Labourers	0.95	0.90	0.05
Workers in Household Industries	1.30	0.63	0.67

Source: Data Compiled from Census, 2011

## 6. LOGISTIC INFRASTRUCTURE PROFILE

Nadia district's logistics infrastructure includes significant road and rail networks, proximity to ports and an international airport, and waterways for short-distance travel. Key roads include the Kalyani-Barrackpore Expressway and National Highway-34. For rail, the district is intersected by 230 km of track and is near the international rail link at Gede, with its closest stations being Kalyani and Ranaghat. The Kolkata Port is the closest major port, and the district is about 48 km from the Netaji Subhash Chandra Bose International Airport.

### *Road Transport*

#### **Key National Highways in the District:**

- **National Highway 34 (NH 34, now NH12):** This highway connects the district, while the Kalyani-Barrackpore Expressway provides access to Kolkata. The highway connects Nadia to Assam, the gateway to North East India.
- **National Highway 35 (NH 35):** This highway (Barasat to Indo-Bangladesh Border) also serves the district, though its primary route is in North 24 Parganas, facilitating international travel and commerce.

#### **Key State Highways in the District:**

- **State Highway 1 (SH 1): Krishnanagar Karimpur Jalangi Road:** Passes through the districts of Nadia and North 24 Parganas. In Nadia, it covers sections like Bongaon-Chakdah, Chakdah-Birohi (via NH 34), and Birohi-Madanpur-Kalyani.
- **State Highway 8 (SH 8):** The Krishnagar-Nabadwip Dham road is located in Nadia district and is undergoing widening and strengthening projects.
- **State Highway 5 (SH 5):** Has a long stretch in the Nadia district, which is a portion of the entire highway that also passes through Birbhum and Murshidabad districts.

## Rail Transport

Nadia district has a well-developed rail network, with major stations like Nabadwip Dham and Ranaghat connecting to Kolkata and northern parts of West Bengal. It is also on the international rail route to Bangladesh, with Gede as the border station. The railway network includes a main line from Howrah/Kolkata to New Jalpaiguri (NJP) and a Sealdah-Lalgola line passing through Ranaghat.

### Major railway stations

- **Nabadwip Dham:** A major station on the Bandel–Katwa line, it is the main railway station for Nabadwip and is situated on the main route to Kolkata/Howrah..
- **Ranaghat:** A major junction on the Sealdah-Lalgola line, it serves as a key connecting point for trains from Kolkata to northern West Bengal.
- **Gede:** The last station in Nadia on the Indian border, it is part of the international rail link to Bangladesh
- **Krishnanagar City:** It is the gateway to Murshidabad district to Beharampore. Important Stations on this route are Bethuadahari & Plassey.

### Connectivity to Other States:

- **Assam:** The Bandel Katwa line continues into Assam & further North East, providing direct connectivity to cities like Guwahati, Dibrugarh, Tinsukia, Silchar, Agartala.
- **Jharkhand & Bihar:** The Bandel Katwa line also further connects to Bihar & Jharkhand, with connections to cities like Kishanganj, Katihar & Dalkhola<sup>1</sup>.

### *Water Transport*

Water transport in Nadia plays a crucial role in facilitating local trade and connecting the district to larger logistics hubs. While it is not a center for large-scale international maritime trade, the extensive river network supports cost-effective movement of goods and boosts local economic

---

<sup>1</sup> Information cumulated from Indian Rail Info

activity through commerce and tourism. Nadia's water transport network is primarily based on its natural river system, including the Bhagirathi-Hooghly, Jalangi, Churni, and Mathabhanga rivers, though many have less water now. Historically, this network was vital, and while the government is promoting inland waterways, current large-scale public transport is limited, with some local services like those on the Anjana Canal and commercial logistics providers operating in the area. It is not a major hub for large-scale cargo shipping, which is handled by nearby ports like the Haldia Dock Complex and Kolkata Port<sup>2</sup>. For major cargo handling and large-scale logistics, the district relies on the extensive rail and road networks connecting to the larger ports in the state.

### ***Air Transport***

While Nadia currently lacks a commercial airport within the district itself, its proximity to Kolkata offers significant advantages for air-based business development.

Nearby airports

- Netaji Subhash Chandra Bose International Airport (CCU), Kolkata

**This is the primary airport serving Nadia, located around 120 km away.** It provides excellent connectivity for both domestic and international travel and cargo.

- Kazi Nazrul Islam Airport (Durgapur)

**Located approximately 170 km from Nadia,** this regional airport offers limited flights but can be an option for certain businesses

### **Export infrastructure at Netaji Subhash Chandra Bose International Airport (CCU), Kolkata**

Netaji Subhas Chandra Bose International Airport (CCU), Kolkata, boasts a well-developed International Air Cargo Terminal, essential for facilitating exports from the region and connecting businesses to global markets.

Here's a breakdown of its key features: International air cargo terminal

- Established Expertise:

---

<sup>2</sup> Haldia Dock Complex and Haldia Dock Authority

## Kolkata's International Air Cargo Terminal

holds the distinction of being the first of its kind in India, commissioned in 1975.

- **Strategic Location:** It's situated conveniently, just half a kilometer north of the international terminal building, with robust road infrastructure for seamless cargo movement.
- **Extensive Facilities:**
  - **Covered Area:** The terminal encompasses a vast 21,906 square meters of covered space, [according to www.nscbiaairport.com](http://www.nscbiaairport.com).
  - **Capacity:** It has an impressive annual holding capacity of 120,000 metric tons, including transshipment cargo.
  - **Aircraft Accommodation:** Four dedicated parking bays cater to freighter aircraft, accommodating large models like the Boeing 747.
- **Integrated Services:** The Airports Authority of India (AAI) has meticulously designed the terminal to offer a comprehensive range of facilities for efficient cargo processing, comparable to international standards.
- **One-Stop Shop:** All major airlines and regulatory agencies involved in pre-shipment formalities and clearance are conveniently housed under one roof, streamlining the export process.
- **Export Wing:** A dedicated export wing within the cargo terminal provides a covered area of 8,516 square meters, including an Elevated Transfer Vehicle (ETV) area of 1,333 square meters.
- **Special Cargo Handling:**
  - **Cold Storage:** Dedicated facilities with three chambers and controlled temperatures cater to temperature-sensitive cargo like pharmaceuticals, vegetables, fruits, and meat.
  - **Strong Room:** A secure strong room handles valuable cargo.
  - **Hazardous Cargo Shed:** A designated shed safely stores and manages hazardous cargo.
  - **Transshipment Shed:** Facilitates efficient transfer of goods between flights.

General facilities

- Integrated Cargo Management System (ICMS): An online system streamlines data processing and ensures efficient cargo management.
- Equipment: Forklifts, high reach takers, electronic and mechanical weighing machines, cargo trolleys, and power pallet trucks enhance operational efficiency.
- Parking & Docking: Dedicated idle Unit Load Device (ULD) parking areas and 16 truck docks ensure smooth flow of vehicles and cargo handling.
- Disposal Unit: Facilitates the disposal of unclaimed or uncleared cargo.

#### Connectivity and reach

- Kolkata International Air Cargo Terminal

serves as a critical hub for air cargo services across the entire Eastern and North Eastern regions of India.

- It facilitates international freight transactions with six major global market regions, including South-Asian, South-East Asian Countries, Western Countries, Middle-East Countries, and Central Asia.

In summary, Kolkata Airport's robust export infrastructure, including a well-equipped and strategically located cargo terminal, efficient processing systems, and dedicated facilities for various types of cargo, positions it as a vital gateway for businesses looking to export goods from Eastern India to the global marketplace<sup>3</sup>.

## 7. EXPORT INFRASTRUCTURE

The export infrastructure in Nadia district is primarily centered on cross-border trade with Bangladesh, facilitated by a key railway link and supported by agricultural and industrial facilities. However, for large-scale international maritime exports, the district relies on the ports of Kolkata and Haldia.

---

<sup>3</sup> Data Compiled from Airport Authority of India

## Cross-border infrastructure

- **Gede–Darshana rail link:** Nadia is crucial for India's rail trade with Bangladesh, with Gede serving as the final Indian railway station and a Land Customs Station (LCS).
- **Customs and inspection:** The LCS at Gede has the necessary infrastructure for customs clearance of both freight and passenger rail traffic. In 2022, the Customs Electronic Data Interchange (EDI) System was launched here to improve the efficiency of cross-border trade.
- **Preventive presence:** The Kolkata Customs Preventive Commissionerate monitors the Nadia-Bangladesh border to deter illegal smuggling.
- **Rail connectivity expansion:** A third railway line is being added between Ranaghat and Krishnanagar to reduce congestion and increase freight traffic to Bangladesh via the Gede–Darshana link. New goods sheds have also been commissioned at Dhubulia to support this increase.

## *Land Custom Stations*

Nadia District directly shares the border with Bangladesh, it does have its own Land Custom Stations (LCS) for road & rail-based trade in the name of Gede land Customs Station. However, Exports and imports via land from Nadia District must be routed through the major, well-established LCS located in the neighbouring district of North 24 Parganas. Although the district does not have its own riverine customs station for trade via inland waterways, but it do have access to such riverine customs station situated very close to the District (in Hooghly District).

Major land custom stations in & near Nadia District are<sup>4</sup>:

- **Gede Land Customs Station, Nadia:** The Gede Land Customs Station is a border checkpoint on the India-Bangladesh border, located in the Nadia district of West Bengal. It is primarily a rail-based crossing and is a key point of transit for the Maitree Express, which connects Kolkata and Dhaka

---

<sup>4</sup> Kolkata Customs Portal

## **Operations and services**

- ✓ **Rail transit:** The station primarily handles rail freight and passenger traffic. The Maitree Express, a passenger train service between Kolkata's Sealdah station and Dhaka in Bangladesh, uses this route.
- ✓ **Regulatory authorities:** Various government agencies operate at the station, including the Border Security Force (BSF), the Bureau of Immigration, and Customs personnel from the Central Board of Excise and Customs.
- ✓ **Trade:** While Gede is active for rail cargo, other land customs stations in the region, such as Petrapole, handle a larger volume of road trade. Some reports have noted that the rail traffic at Gede can be less consistent than at other ports.
- ✓ **Customs administration:** Gede falls under the jurisdiction of the Kolkata Customs (Preventive) Commissionerate, which is responsible for anti-smuggling work, duty collection, and clearance of import-export cargo<sup>5</sup>.
- **Petrapole Land Port, North 24 Parganas:** This is the largest and most significant land port in South Asia, located approximately 80 km from Kolkata. It handles a substantial volume of trade and passenger traffic between India and Bangladesh.
- **Ghojadanga Land Customs Station, North 24 Parganas:** Another very active and important land port for trading with Bangladesh, also located in the North 24 Parganas district.

### ***Integrated Check posts***

Nadia District share a land border with Bangladesh; but it does not have an ICP within its boundaries. The nearest ICP are the Petrapole & Ghojadanga in North 24 Paraganas, Changrabandha in Coochbehar, Fulbari in Jalpaiguri, and Hilli in Dakhin Dinajpur on the India-Bangladesh border, and Jaigaon in Alipurduar District.

---

<sup>5</sup> Export Promotion Policy, West Bengal 2023

### ***Cold storages in the district***

Nadia District possesses one cold storage under National Horticulture Board and Ministry of Food Processing & Industries with 3300 metric tonne capacity. Due to poor marine profile, the district has no cold storage for marine and fishery under MPEDA. (Refer Table A3 in Annexure)

### ***Warehouse in the District***

There are 2 warehouses registered under Warehouse Regulatory Development Authority with 13670 MT capacity. However, specifically for rice under RIDF scheme, the district has 2 warehouses registered by West Bengal State Warehousing Corporation of 10. Also, WBSWC has hired rented godown for general product category (Refer Table A4 in Annexure)

## **8. AGRICULTURAL PROFILE**

The total Geographical area of Nadia is 3927 sq. km. The Net cropped / sown area of land is 272135 hectares & the Area under Misc. Tree crops and others is 4404 hectares. **The cropping intensity is 280%**. Refer Table A5 in the Annexure

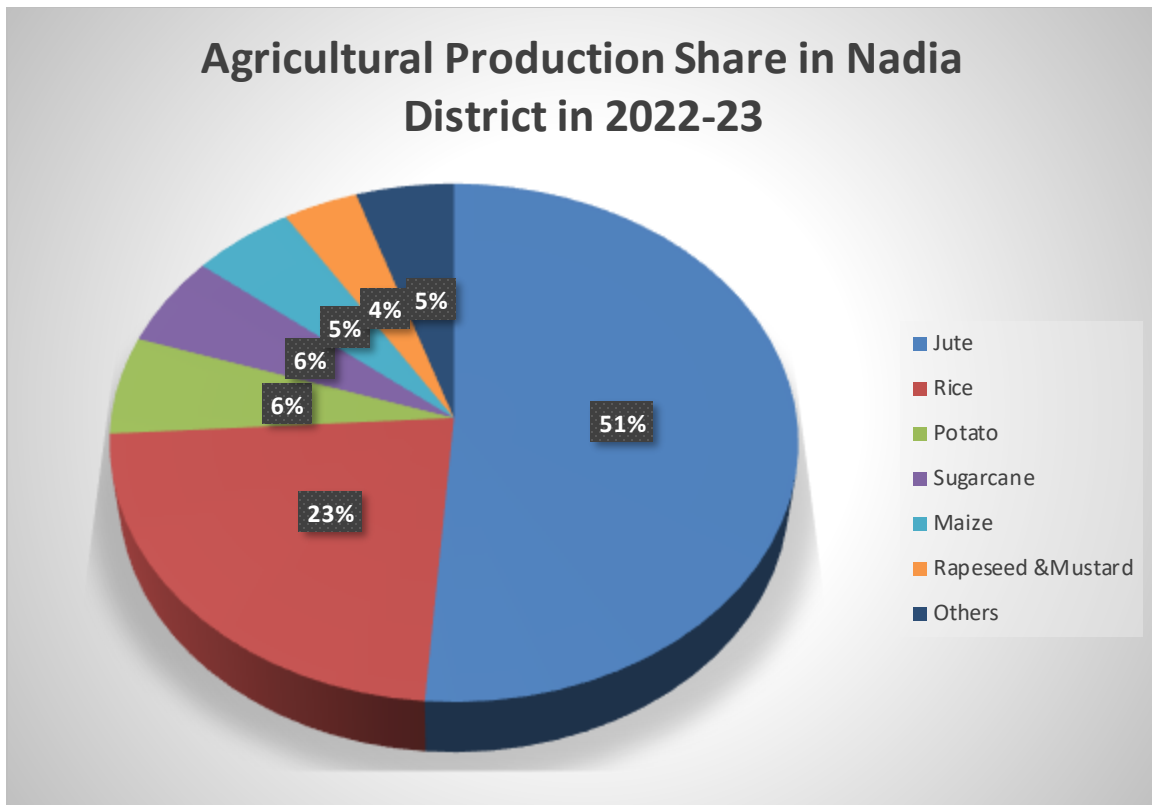
The core agricultural crops of the district are **Jute, Rice, Potato, Sugarcane, Maize, Rapeseed & Mustard.**

**Other Crops include** Khesari, Urad, Groundnut, Gram, Masoor, Moong (Green Gram), Wheat, Peas & Beans (Pulses) etc.

**Jute accounts to 51.23%** of the agricultural produce from the district, **Rice being 22.80%**, followed by **Potato 6.10%**, **Sugarcane 5.68%**, **Maize 5.28%**, **Rapeseed & Mustard 3.86%** & **Other Crops being 5.05%**<sup>6</sup> as shown in the graph below. The detailed production details & yield details is given in Table A6 in the Annexure.

---

<sup>6</sup> Data compiled from Directorate of Economics and Statistics



**Fig 3: Agricultural Production Share in Nadia**

The **production technology is gradually strengthening its capital composition** in terms of greater use of fertilizer, improved seeds & pesticides. Farmers are now habituated to use modern Farm machinery & implements like Tractor, Power Tiller, Power Thresher, Solar Pump set, Power Sprayer, Combined Harvester, and Paddy Transplanter etc.

**River water is an important source of irrigation for agricultural activities** in the district. They provide great scale of convenience to the large number of agriculture-dependent population of the district.

**To maintain ecological balance, the Agriculture Department is emphasizing organic farming / sustainable farming and use of bio-fertilizers / organic manures and bio-pesticides in crop production are being given top most priority.**

### ***Horticulture Profile of the District:***

The district also has a good production of Flowers, Fruits, Plantation & Vegetables<sup>7</sup>.

#### ***Flowers:***

Nadia District produces **77.55 thousand metric tons of Tuberose** which is approximately **48.15% of the total Tuberose production from the state**, followed by **Miscellaneous Flower** which is **approx. 29.73%**, **Marigold** which is **approx. 27.80%**, **Gerbera** which is **approx. 22.57%**, **Seasonal Flower** which is **approx. 19.47%**, & **Orchids** which is **approx. 19.42%**, of the total respective flower production from the state.

The District produces **23.2 thousand metric tons of Total Loose Flowers** which is approximately **26.76% of the total loose flower production from the state**.

The District produces **96.57 crores of Total Cut Flowers** which is approximately **24.49% of the total cut flower production from the state**.

**Table 2: Flower Production of Nadia**

<b>Name</b>	<b>Area in ha (in Thousands)</b>	<b>Production (2023-24)</b>	<b>% of Total Produce from West Bengal</b>	<b>Units</b>
Tuberose	3.35	77.55	48.15%	in Crore Sticks
Miscellaneous Flower	1.04	1.14	29.73%	in thousand MT
Marigold	2.2	20.21	27.80%	
Gerbera	0.007	1.310	22.57%	in Crore Sticks
Seasonal Flower	1.18	1.85	19.47%	in thousand MT
Orchid	0.001	0.060	19.42%	in Crore Sticks
Gladiorus	0.38	5.02	10.76%	
Rose	0.336	11.36	10.12%	
Chrysanthemum	0.05	1.27	1.87%	

**Source: "Report from the Directorate of Horticulture Dept. of FPI & H, Govt. of W.B."**

<sup>7</sup> Directorate of Horticulture, Govt of West Bengal

### ***Fruits:***

Nadia District produces **564.137 thousand metric tons of Fruits** which is **approximately 14.54%** of the total fruit production from the state.

The District produces **29.66% of the total Banana** produced in the State, followed by **Jackfruit, Litchi, Papaya, Guava, Mango & Other Citrus Fruits** which is **approx. 12.01%, 10.00%, 8.28%, 6.01%, 5.71% & 5.54%** of the respective fruits total produce of the state.

**Table 3: Fruit Production of Nadia**

<b>Name</b>	<b>Area in ha (in Thousands)</b>	<b>Production (2023-24)</b>	<b>% of Total Produce from West Bengal</b>	<b>Units</b>
Banana	12.560	427.100	29.66%	Thousand MT
Jackfruit	1.300	27.355	12.01%	
Litchi	1.063	8.250	10.00%	
Papaya	0.970	27.665	8.28%	
Guava	1.500	13.450	6.01%	
Mango	6.295	50.412	5.71%	
Other Citrus	0.550	6.070	5.54%	
Miscellaneous Fruits	0.319	3.083	3.33%	
Dragon	0.007	0.070	2.81%	
Bael	0.006	0.062	1.42%	

*Source: "Report from the Directorate of Horticulture Dept. of FPI & H, Govt. of W.B."*

### ***Vegetables:***

Nadia District produces **1586.604 thousand metric tons of Vegetables** which is **approximately 9.66%** of the total fruit production from the state.

The District produces **17.01% of the total Peas (Green)** produced in the State, followed by **Carrot, Radish, Ladies Finger, Elephants Foot Yam, Cucumber, Onion & Cauliflower** which is **13.72%, 12.48%, 12.45%, 12.39%, 11.93%, 10.31% & 10.13%** of the respective total vegetables produce of the state.

**Table 4: Vegetables Production of Nadia**

Name	Area in ha (in Thousands)	Production (2023-24)	% of Total Produce from West Bengal	Units
Peas (Green)	2.780	26.212	17.01%	Thousand MT
Carrot	1.805	34.235	13.72%	
Radish	5.420	71.880	12.48%	
Ladies Finger	8.299	118.873	12.45%	
Elephants Foot Yam	1.759	41.977	12.39%	
Cucumber	1.670	41.757	11.93%	
Onion	4.907	90.081	10.31%	
Cauliflower	7.785	202.310	10.13%	
Cabbage	8.390	237.865	9.94%	
Brinjal	11.904	301.068	9.72%	
Other Vegetables	12.843	80.940	9.66%	
Green Cjilli	5.410	24.345	9.14%	
Tomato	4.905	122.625	8.98%	
Pointed Guard	2.630	32.080	8.38%	
Pumpkin	1.755	27.450	8.34%	
Arum (Kachu)	1.558	33.458	7.84%	
Other Cucurbits	5.132	60.168	7.35%	
Sweet Potato	0.751	9.370	5.33%	
Capsicum	0.426	7.346	4.52%	
Bottle Guard	1.640	9.256	3.89%	
Beans	1.750	6.843	3.17%	
Watermelon	0.416	6.465	2.91%	

Source: "Report from the Directorate of Horticulture Dept. of FPI & H, Govt. of W.B."

**Plantation:**

**Coconut:** Nadia District produces 173.764 lakhs of Coconuts cultivated over 1.359 thousand hectares of land which is approximately 4.13% of the total Coconut production from the state.

**Arecanut:** Nadia District produces 1.099 thousand MT of Arecanuts cultivated over 0.392 thousand hectares of land which is approximately 4.41% of the total Arecanuts production from the state.

**Betel Leaves:** Nadia District produces 6.487 Lakh motes of Betel Leaves cultivated over 0.980 thousand hectares of land which is approximately 4.69% of the total Betel Leaves production from the state.

## **9. INDUSTRIAL SCENARIO OF NADIA DISTRICT:**

Nadia's industrial landscape is characterized by a mix of traditional and modern sectors, with a strong emphasis on handicrafts, handlooms, and food processing, complemented by medium to large-scale industries in areas like engineering, chemicals, and steel. The district is particularly famous for its clay crafts, especially idol making, and its handloom industry, which is known for the Shantipur Tanta saree. The presence of major rivers and its location near Bangladesh also support specific industrial activities like food processing and potential trade.

### ➤ **Industrial Parks**

- **Haringhata Industrial Park, Haringhata, Nadia:**

West Bengal Industrial Development Corporation (WBIDC) under the aegis of Department of Industry Commerce & Enterprises Government of West Bengal has set up **Haringhata industrial park, at Haringhata in Nadia**, West Bengal. The Park is spread over approx. 358 acres of land. The project site is bound by NH-34 towards North-West side (having a total road frontage of 912 m) connecting to Dalkhola, where it meets NH 31, which connects it to Siliguri. **Anchor units:** A major occupant of the park is Flipkart, which operates one of its largest fulfilment centres in the country at the site. The park is designed to attract a variety of industries, including agro-based industries and food and allied products, complementing the existing dairy and paper industries in the surrounding areas.

- **Kalyani Industrial Park, Phase-I:**

This Industrial Park was **set up by WBIIDC** (West Bengal Industrial Infrastructure Development Corporation). Kalyani Industrial Park in three locations viz. - Kalyani Phase -I, Kalyani Phase -II, Kalyani Phase - III was established in 1976 in the Nadia district of West Bengal. Phase I of the Kalyani Industrial Park is located within Kalyani Township under Gayespur Municipality at 50 Km distance from Kolkata. The Total Area of Land is 102 acres, Allotable area being 92 acres, and comprising of 19 Industrial Units.

- **Kalyani Industrial Park, Phase-II:**

Kalyani Industrial Park, Phase - II was **set up by WBIIDC** (West Bengal Industrial Infrastructure Development Corporation). Kalyani Industrial Park, Phase II is located under Kalyani Municipality. The Total Area of Land is 134 acres, Allotable area being 134 acres, and comprising of 20 Industrial Units.

- **Kalyani Industrial Park, Phase-III:**

Kalyani Industrial Park, Phase - III was **set up by WBIIDC** (West Bengal Industrial Infrastructure Development Corporation). Kalyani Industrial Park, Phase III is located under Kalyani Municipality. The Total Area of Land is 88 acres, Allotable area being 71 acres, and comprising of 39 Industrial Units.

- **Kalyani Industrial Estate, Phase-I:**

Kalyani industrial Estate, Phase I was **set up by WBSIDCL** (West Bengal Small Industries Development Corporation Limited). The Industrial Estate is on 35 Acres of land, and comprising of 72 nos. of functioning Units, mostly of Engineering Fabrication Job, Woolen Fancy Garments.

- **Kalyani Industrial Estate, Phase-II:**

Kalyani industrial Estate, Phase II is **set up by WBSIDCL** (West Bengal Small Industries Development Corporation Limited). The Industrial Estate is on 30 Acres of land, and comprising of 58 nos. of functioning Units, mostly of Engineering Fabrication Job, Plastic & packaging.

- **Kalyani Industrial Estate, Phase-III:**

Kalyani industrial Estate, Phase II is **set up by WBSIDCL** (West Bengal Small Industries Development Corporation Limited). The Industrial Estate is on 5 Acres of land, and comprising of 1 no. of functioning Units, mostly of Engineering Fabrication.

➤ **MSME CLUSTERS:**

The district promotes the growth of Micro, Small, and Medium Enterprises (MSMEs) through various clusters. There are **70 Clusters (5 under MSME Department, 64 under Handloom & 1 under Khadi Department)** in Nadia District registered under MSME, Handloom & Khadi Department & comprises of a total of **173 Units & generates 30048 employments**. The Handloom Units generates **a total employment of 28678** followed by MSME & Khadi which is 1300 & 70 respectively.

The sector comprises diverse clusters such as Textiles & Readymade Garments, Jewellery, Machinery & Equipment other than transport & Steel Furniture Manufacturing; which reflect both traditional craftsmanship and modern industrial skill. MSMEs not only provides livelihood opportunities, especially in rural and semi-urban areas, but also support entrepreneurship, innovation and value addition in local industries. (Refer Table A7 in the Annexure).

- **Textiles & Readymade Garments Sector:**

This sector comprises of **107 Units & 29202 nos of employee**. Handloom Department has 64 Clusters & MSME Department has 2 Clusters; Krishnanagar II Block Level Cluster, Nakashipara East Block Level Cluster, Nakashipara South Block Level Cluster & Nakashipara South Block Level Cluster has generated 4004, 2283, 1756 & 1692 nos. of employment. MSME Department has Haringhata Readymade Garment Cluster that has generated 375 nos. of employment.

- **Jewellery Sector:**

Ranaghat Sub-Division Gold & Silver Jewellery Cluster is the only cluster in this sector and comprises of 19 Units & 210 Artisans.

- **Metal Fabrication Furniture Sector:**

Nakashipara Steel Furniture Cluster & Karimpur-II Steel Furniture Cluster are the only two Clusters under MSME Department in this sector. A total of 45 Units generating 465 nos. of employment is the highlight of this Sector.

- **Machinery & Equipment Other Than Transport:**

Rural Craft & Cultural Hub Cluster is the only Cluster under the Department of Khadi & the sector.

The details of the Clusters will be given in the table A7 in the Annexure.

## **10.BANKING SECTOR**

The District has 23 Commercial Banks including Private Sector Banks in addition to the RRB viz Bangiya Gramin Vikash Bank. Nadia District Central Co-operative Bank, Nadia ARDB and WBFC functioning through 372 branches of which 287 are rural/semi urban branches and 92 are urban branches. There are 323 Primary Agriculture Credit Societies and the number of ATMs are 506.

**The CD ratio in the district as on 31 March 2019 has increased to 49.11.**

**UNITED BANK OF INDIA is the Lead Bank of the district.**

The details about the Banks present in Nadia District & their performance in terms of Loans, Credit Deposit Ratio, recovery Ratio, e.t.c. is shown in Table A8 in the Annexure.

## **11.ODOP SECTOR OF THE DISTRICT**

From the above-mentioned industries and sector, the following has been approved by the Government as the ODOP products of the district. **Gobindo Bhog rice cultivated in Nadia also has GI tag along with Tangail and Shantipur Saree**

A brief has been given in the figure below:

## CLAY DOLL

- Clay dolls of Nadia refer to the famous handicraft tradition from the Ghurni village in the Krishnanagar region of Nadia district, West Bengal, India. These dolls are renowned for their lifelike detail, expressions, and vibrant colors, often depicting scenes of village life, deities, and animals. The art form has been passed down through generations and received patronage from the Krishnanagar kings, with artists using clay from the Ganga river to create their work

## TANGAIL, JAMDANI SAREE & SHANTIPORE SAREE

- Tangail, Jamdani, and Shantipore are three distinct varieties of handwoven cotton sarees produced in West Bengal's Nadia district, known for their unique weaving techniques and designs. After the partition of India, many skilled weavers from Bangladesh, where these styles originated, migrated and settled in this region, reviving the art of handloom weaving. The Tangail and Shantipore Saree have also received GI Tag.

Fig 4: ODOP details of the district



CLAY DOLL

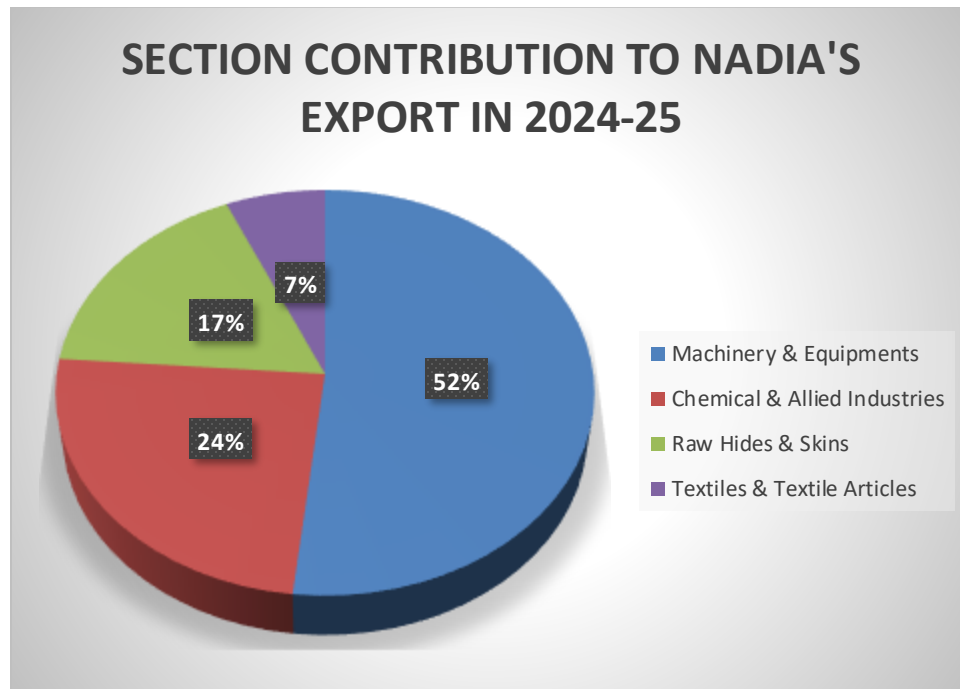


TANGAIL, JAMDANI & SHANTIPORE SAREE

## 12.EXPORT PROSPECTS AND POTENTIALITY OF THE DISTRICT

There is a dip in the total export of Nadia District in the last three years i.e. from 2022-23 to 2024-25, there is a negative growth of -10.88%. However, there is a growth of 7.45% in the total exports from the District as compared to last year i.e. 2023-24 to 2024-25. The total export of Nadia of Rs. 2.04 Billion INR in 2024-25 is **mainly comprised of Machinery & Equipment, Chemical & Allied Industries, Raw Hides & Skins & Textiles & Textiles Articles Section**. The district export is majorly dominated by the Ferrite Cores (HS Code 85051110), Parts of Machinery of heading 8474 (HS Code 84749000), Hand Bags & Shopping Bags of Cotton (HS Code 42022220), Chemical & Allied Industries Products (HS Code 29400000 & 29397900), & Transformers (HS Code 85043100).

The **Machinery & Equipment** has contributed to **51.75%**, **Chemical & Allied Industries** **24.46%**, **Raw Hides & Skin** **17.26%** & **Textiles & Textiles Articles** **6.53%** respectively to the total exports from Nadia District. Refer Table A9 in the Annexure.



**Fig 5: Sector Contribution in Nadia exports**

**Source: Data compiled from the Dashboard of Ministry of Commerce & Industry, Govt of India**

India's exports showed **strong overall growth**, with standout performances in **human hair (+1681%)**, **transformers (+138%)**, **cotton handbags (+81%)**, and **pharma derivatives under Chemical & Allied Industries (+428%)**. These sectors outpaced global demand and highlight India's competitiveness in niche and value-added markets.

Moderate gains were seen in **chemicals and machinery parts**, while **ferrite cores**, **jute handbags**, and **cyclic amides** underperformed despite global demand growth.

Major destinations include the **USA, Germany, China, France, and Japan**, reflecting India's expanding presence in key markets.

India is performing strongly in high-demand, diversified sectors, but needs to focus on value addition and product innovation to sustain export momentum and close gaps in weaker categories.

As analyzed from the analysis below, it is clear that the exported products from Nadia District have a huge potential in the international market as both India's export growth and World Import growth are rapidly increasing in last five years (Ref: Table 5 given below)

**Table 5: Export Potentiality Analysis of Nadia**

HS Code	Product Details	Exported value in 2020 (thousand \$)	Exported value in 2021 (thousand \$)	Exported value in 2022 (thousand \$)	Exported value in 2023 (thousand \$)	Exported value in 2024 (thousand \$)	Export growth of India in five years (in %)	World Import Growth of the sector @ 6 digit in five years (in %)	Top five importers of India	Top ten importer of the sector @ 6 digit in world market
85051110	Permanent magnets of metal and articles intended to become permanent magnets after magnetization (excluding chucks, clamps and similar holding devices): Ferrite cores	15,080	25,176	25,358	16,992	15,297	1.44%	8%	Germany, Hong Kong, Mexico, Brazil, China	China, Japan, Viet Nam, Germany, USA, Phillipines, Switzerland, Netherland, Thailand, Malaysia
84749000	Parts of machinery for working mineral substances of heading 8474, n.e.s.	2,90,679	4,01,449	5,08,873	4,77,106	4,94,508	70.12%	9%	USA, Australia, Russia, South Africa, Ghana	USA, Canada, Australia, Indonesia, Germany, UK, Russia, Peru, Chile, France
42022220	Handbags, whether or not with shoulder straps, incl. those without handles, with outer surface of plastic sheeting or textile materials: Hand bags/shopping bags of cotton	1,78,926	2,31,149	3,09,493	2,98,955	3,24,407	81.31%	11%	China, France, Italy, Hong Kong, Cambodia	China, USA, France, Italy, Hong Kong, S.Korea, Germany, Spain, UK, Japan
29400000	Sugars, chemically pure (excl. sucrose, lactose, maltose, glucose and fructose); sugar ethers, sugar acetals and sugar esters, and their salts (excl. natural or reproduced by	12,01,640	14,62,285	15,21,113	15,59,117	14,74,408	22.70%	5%	Germany, China, USA, France, Netherlands	USA, Japan, Switzerland, Germany, Spain, S.Korea, Poland, France, Italy, India

29397900	eht sevitavired rehto dna sretse ,stlas dna eninogce dna eniacoc ,stlas rieht dna ,senirdehpe dna enieffac ,foereht sevitavired rehto dna sretse ,stlas dna ,etamecar	21,238		94,948	89,298	1,12,196	428.28%	7%	Belgium, Switzerland, Poland, Netherlands, USA	USA, Italy, Germany, Switzerland, UK, Poland, Belgium, Sweden, Brazil, Turkiye
85043100	Transformers having a power handling capacity <= 1 kVA (excl. liquid dielectric transformers)	55,188	73,072	94,423	1,37,223	1,31,331	137.97%	6%	USA, Mexico, Saudi Arabia, Germany, UAE	USA, China, Germany, Hong Kong, Mexico, Viet Nam, Japan, Thailand, India, Canada
5010010	Human hair, unworked, whether or not washed or scoured; waste of human hair	10,544	1,39,685	1,28,604	1,79,441	1,87,839	1681.48%	-22%	Myanmar, Bangladesh, Viet Nam	Myanmar, Austria, Italy, Israel, Viet Nam, Bangladesh, Sweden, S.Korea, UK, Poland
29242190	Ureines and their derivatives; salts thereof: Other ureines and thr drvtvs salts thereof	23,030	25,480	18,939	18,879	27,426	19.09%	-2%	Russia, Singapore, USA, Netherlands, Thailand	Brazil, USA, Japan, India, Indonesia, S.Korea, France, Germany, Singapore, Spain
42022230	Handbags, whether or not with shoulder straps, incl. those without handles, with outer surface of plastic sheeting or textile materials: Jute hand bags/shopping bags.	63,618	1,06,119	1,07,963	85,305	75,526	18.72%	6%	France, USA, UK, Belgium, Netherlands	China, USA, France, Italy, Hong Kong, S.Korea, Germany, Spain, UK, Japan
29242990	Cyclic amides, incl. cyclic carbamates, and their derivatives; salts thereof (excluding ureines and their derivatives, salts thereof, 2-acetamidobenzoic acid "N-acetylanthranilic acid" and its salts and ethinamate "INN"): Other cyclic amides and thr drvtvs and salts	3,72,796	2,92,281	2,99,915	3,42,883	3,78,931	1.65%	1%	Germany, Norway, USA, China, Japan	USA, Ireland, Germany, China, Italy, India, Japan, Brazil, Switzerland, Denmark

## 13.SWOT ANALYSIS OF THE DISTRICT

Studying and examining the different aspects of the district and collecting data from the primary and secondary sources and the focus group discussions conducted in the district, the SWOT Analysis of the district in terms of export development has been depicted below

<p><b>STRENGTHS</b></p> <ul style="list-style-type: none"> <li>• Strong product profile of Machinery &amp; Equipment, Chemical &amp; Allied Products &amp; Textile Products.</li> <li>• Presence of both Rail and Road Connectivity.</li> <li>• Existence of 67 industrial clusters for handloom and textile products alone out of 70 Clusters in the district.</li> <li>• Availability of skilled workforce</li> <li>• Presence of both Industrial Parks and Industrial Estates at Haringhata &amp; Kalyani.</li> <li>• Railway LCS at Gede for freight movements.</li> <li>• Strong Horticulture based products</li> <li>• Increasing Cultivation of Jute in the District and Jute related products esp. Jute bags, which is now acknowledged as a replacement of plastic bags worldwide.</li> <li>• The district has GI for Tangail, Jamdani Shantipore Saree.</li> </ul>	<p><b>WEAKNESSES</b></p> <ul style="list-style-type: none"> <li>• Lack of packaging, cold storage and cold transportation facilities for horticulture products</li> <li>• Requirement of Export Facilitation and International Marketing Assistance</li> <li>• Lack of support for R&amp;D, Quality Certifications</li> <li>• Lack of AZO Test Labs creating hindrance to exports of handwoven textile articles</li> <li>• Lack of knowledge on latest trends of design hampering the textile growth</li> <li>• Over dependence of MSMEs on traders in Kolkata/outside the state for markets.</li> <li>• Lack of Hub &amp; spoke model of development in the industrial estates and parks.</li> <li>• The industrial parks are used majorly as Facility centers for E-commerce firms.</li> <li>• Need for boarder LCS given the diversity of production capabilities of the district.</li> <li>• Lack of efforts to utilize the GI products for exports.</li> </ul>
<p><b>OPPORTUNITIES</b></p> <ul style="list-style-type: none"> <li>• Growing International market for Machinery &amp; Equipment like Transformers, Chemical &amp; Allied Products, Cotton and Jute Handbags &amp; Human Hair.</li> <li>• E-commerce exports are gaining momentum.</li> <li>• A strong Horticulture based products may give rise to exports to neighboring countries.</li> </ul>	<p><b>THREATS</b></p> <ul style="list-style-type: none"> <li>• Formation of clusters with more focus on social objectives deprive scale benefits.</li> <li>• Over-congestion of the cluster due to horizontal expansion</li> <li>• Lack of facilities in the clusters leading to migration of value addition to other districts/states.</li> </ul>

- |  |  |
|--|--|
| <ul style="list-style-type: none"> <li>• Supportive schemes of both the Central and State Governments for exports</li> </ul> | <ul style="list-style-type: none"> <li>• Stricter environmental and safety requirements in international markets for Engineering and Chemical products.</li> <li>• Lack of facilities in the clusters leading to migration of value addition to other districts/states</li> <li>• Emergence of ESG requirements and other non-tariff barriers in international markets.</li> </ul> |
|--|--|

## 14. EXPORT CHALLENGES OF THE DISTRICT

Nadia district is known for its highly diversified product capabilities including manufacturing and agriculture sectors. The major contributions for exports from the district are Machinery and Equipment (52%) followed by Chemical & Allied Products (24%), Raw Hides and Skins (17%) and Textile made-ups (7%), which are predominantly accounted by the MSMEs. Though the exports captured in the trade data indicates more exports of engineering goods, chemicals and Cotton handbags there are considerable exports of human hair, gems & jewelry ,handloom textiles and other agricultural products are exported through traders from outside the district or state. The broad issues for the exported and exportable potential products include insufficient road infrastructure, R&D and testing facilities, limited market access, and lack of awareness about modern and effective production practices among MSMEs.

### Infrastructure and logistics

- Warehouse and cold storage facilities: The district has industrial parks and estates apart from 70 industrial clusters but does not have logistics parks, warehouses and cold storage facilities. Pack house facility is required for food, agricultural and horticultural products from the district.
- There are inadequate CFCs in the clusters which lead to poor business processes.
- Since there are diverse products from the state, R&D and testing facilities are required to meet the increasing quality compliance requirements in international markets.

- The district has clay toys, agricultural and horticultural products which require pack houses and packaging and labeling services.

### **Market access and finance**

- Difficulty reaching export markets: Exporters, particularly small artisans and handicraft producers, garment producers and other MSMEs and farmers have trouble accessing international markets due to lack of awareness and hence depend on the traders from different states and Kolkata which not only denies direct export but also fetches low price. The artisans of clay toys, human hair product producers and other handloom clusters need training even in the basic business functions.
- Limited access to formal credit: Financing challenges, such as high initial investment costs for upgrades to infrastructure or technology, are significant barriers for many small producers and SHGs which require creation of common facilitation centres. Most of the MSMEs are also reluctant to have the GST registrations fearing compliance cost. Hence the Money Lenders play a major role in the business operations of the clusters.
- Weak export strategy: Though government initiatives exist to boost exports, there are gaps in the district-level execution of a robust strategy for products with high export potential, such as human hair products, clay toys and jute products. The SEFC should make specific interventions to implement the district level initiatives.

### **Operational and Environmental challenges**

- There are 67 cluster for handloom textile products in the district which has huge potential but informal systems, scattered presence and barter system followed constrain the benefits from exports.
- Clay toys, Shantipur Sarees, jute products, gems and jewelry products and leather products of the district suffer from poor use of technology and scale.
- Climate change impacts: Irregular rainfall, frequent floods, and coastal erosion pose significant risks to both agriculture and manufacturing. Unpredictable weather directly disrupts crop yields and logistics movements.

- Lack of modern technology: Many producers in industrial clusters lack modern machinery and technological knowledge, which hinders productivity and the adoption of scientific production methods.
- Though the road infrastructure is well connected with the national and state highways, the rail LCS is ineffective for freight careers. The district needs a road LCS. Similarly the inland waterways need to be utilized effectively for movement of goods.

## **15.GIST OF THE ANALYSIS**

The following are the salient points which emerge from the above discussions:

- The major exports of the district are contributed by engineering products for 52% of the total exports as reported in the year 2024-25, followed by 24 % of chemicals and allied products, 17% of raw hides and skins and 7% of textile articles. Though the district hosts industrial clusters for handloom textiles, clay toys, gems & jewelry and other agricultural products their export contribution is minimal.
- Opportunities for exports of human hair wigs, toys, santipur sarees and other agricultural and food products are high.
- The district has poor warehouse and cold storage facilities.
- Several units located in the clusters are majorly acting as feeder units for MSMEs located in other districts.
- Most of the cluster items produced from the district by MSMEs are suitable for e-commerce exports.
- Exports of MSME products of the district are mostly routed through traders in Kolkata/outside the state.

## **16.EXPORT ACTION PLAN SUGGESTED**

Based on the above facts, analysis of the data and the input from the stakeholders, the following action plan is suggested. The action plan also indicates the desired output of the strategic actions, the responsible agency and the proposed intervention/tool for implementation. It has also been highlighted the activity/activities where a DPR may be required.

Category	Strategic Action	Output Desired	Suggested Agency	Instrument/Intervention
	Provision for Warehouses, Cold Storage and Logistics Park.	Economical capacity utilization of the industrial estates facilities	State Govt	The district in spite of having industrial estates lack warehouses, cold storages and logistics parks. The existing land parcels of Industrial estates may be relooked to accommodate logistics parks and warehouses useful for the manufacturing units in industrial estates. The state government may implement a proper policy for their functioning. <b>(DPR)</b>
	Foreign Post office facility in for E com Exports	Ease of E-Com exports through Dak Niryat Kendra	Postal Dept. + Customs	Mobile foreign post office visiting the district on designated days
	Handholding for direct exports of MSMEs	Increased direct exports from the state	State Govt + GoI	Use acceleration services by institutions like IIFT under suitable schemes. The State Govt. may also launch export incubation fund for supporting the Direct Exports.
	Textile Park	The park is required to integrate the 67 clusters in the handloom products so that scale benefits and cost of production benefits may be obtained.	State Govt.	The park will facilitate not only in production but also can have testing centers, packaging and labeling facilities and display facilities. <b>(DPR)</b>
	Training on effective practices and packaging for MSME handicraft producers, majorly for toys and gems & jewelry products.	Improved productivity and market reach	State Govt.	The Ministry of MSME&T may take up suitable training facilities for the MSMEs and SHGs with expert agencies. Similarly a suitable facilitation for packing and packaging practices may be arranged by the Dept. of MSME. The products identified for the same includes products made of gems and jewellery, jute, and clay toys
	Product and district specific capacity building on exports of MSMEs	Direct exports from MSMEs to diverse markets	State Government	The existing SEFC should undertake time bound product and district specific capacity building of MSMEs in handicrafts and human hair products.

## 17. ANNEXURES

**TABLE A1: DETAILS OF THE DISTRICT ADMINISTRATOR<sup>8</sup>**

District Administrator		
Name	Designation	Email
Sri Aneesh Dasgupta, IAS	District Magistrate	dm-ndi[at]nic[dot]in

**TABLE A2: Details of the Additional District Magistrate<sup>9</sup>**

Name	Designation	Email
Sri Ezaz Ahmed, IAS	Additional District Magistrate (Gen.)	admng-ndi[at]nic[dot]in
Smt. Shinjan Shekher, IAS	Additional District Magistrate (Dev.)	admd-ndi[at]nic[dot]in
Sri Pralay Raychaudhuri, WBCS (Exe.)	Additional District Magistrate (L & LR)	admlrnadia[at]gmail[dot]com
Sri Anup Kumar Dutta, WBCS (Exe.)	Additional District Magistrate (Zila Parishad)	aeozp[dot]nadia[at]gmail[dot]com
Sri Saikat Ganguly, WBCS (Exe.)	Additional District Magistrate (Education) & PD DRDC	drdc[dot]nadia[at]gmail[dot]com

**TABLE A3: COLD STORAGE FACILITIES IN THE DISTRICT**

Name & Address	Capacity (MT)	Products
EVER FRESH MULTIPURPOSE COLD STORAGE Vill – Habibpur, P.S. - Ranaghat, P.O. - Begopara Dist: Nadia	3300	Multipurpose

Source: MPEDA, MOFPI & NHB

**TABLE A4: WAREHOUSE IN THE DISTRICT**

<sup>8</sup>Data taken from official district website of Nadia

<sup>9</sup>Data taken from official district website of Nadia

Sr. No	Details	Capacity (MT)	Remarks
1	RIDF Godown Tehatta , Vill – Jidpur, PO- Betai, PS- Tehatta , Dist.- Nadia, Pin – 741163	5000	Under RIDF Scheme for Rice by WBSWC
2	RIDF Govt. Food Godown, Vill- Jahangirpur, PO – Krishnanagar, Pin – 741103	5000	
3	Benfed, Plot No. 2786,2797,2797/5247, JL No. 52, Khatian No. 1775,1776,1828, Mouza – Ruipukur	2800	Rented godown by WBSWC
4	SWC KRISHNANAGAR 3, J.N.Roy Bahadur, Roy Para	7855	Registered under WRDA
5	SATYANARAYAN FLOUR INDUSTRIES CHANDUR, TARAKESWAR	2020	

Source: West Bengal State Warehouse Corporation & Warehouse Development Regulatory Authority

**TABLE A5: LAND UTILIZATION STATISTICS<sup>10</sup>**

(Area in Hectare)

<i>Sl No.</i>	<i>Items</i>	<i>2020-2021</i>
1	Geographical Area	3927 sq. km.
2	Forest	1216 hectares
3	Area under Non Agricultural use	86522 hectares
4	Permanent Pasture	70 hectares
5	Area under Misc. Tree crops and others.	4404 hectares
6	Cultivable Waste Land	700 hectares
7	Current Fallow	6900 hectares
8	Net Area Cultivated	272135 hectares
9	Gross cropped area	761978 hectares
10	Cropping intensity	280%

<sup>10</sup> Data taken from district website of Nadia

**TABLE A6: CROP-WISE YIELD AND PRODUCTION DATA<sup>11</sup>**

2022 - 2023				
SR. NO.	Agricultural Produce	Production in Tonnes	Area in Hectares	Yield in Ton. / Ha.
1	Jute	1425077	95565	14.91
2	Rice	634213	196045	3.24
3	Potato	169688	5228	32.46
4	Sugarcane	158045	2025	78.05
5	Maize	146996	18496	7.95
6	Rapeseed & Mustard	107239	86776	1.24
7	Masoor	38743	32729	1.18
8	Sesamum	31969	31644	1.01
9	Wheat	30939	9643	3.21
10	Urad	11463	14729	0.78
11	Mesta	5891	328	17.96
12	Gram	5471	5680	0.96
13	Moong(Green Gram)	5213	2963	1.76
14	Groundnut	5087	2935	1.73
15	Peas & beans (Pulses)	3071	3687	0.83
16	Khesari	1638	1693	0.97
17	Other Rabi pulses	818	900	0.91
18	Arhar/Tur	57	36	1.58
19	Sunflower	54	30	1.8
20	Linseed	37	91	0.41

\*Jute & Mesta is produced in Bales & Production yield is Bales / Hectare

**TABLE A7: LIST OF MSME CLUSTERS<sup>12</sup>**

CLUSTERS OF NADIA DISTRICT						
SR. NO.	CLUSTER SECTOR	NAME OF CLUSTER	ACTIVITY OF CLUSTER	DEPT.	NO. OF UNITS	NO. OF EMPLOYEES
1	TEXTILES & READYMADE GARMENTS	KRISHNAGAR - II BLOCK LEVEL CLUSTER	INCREASE IN PRODUCTION AND WAGES OF WEAVERS	HANDLOOM	1	4004
2	TEXTILES & READYMADE GARMENTS	NAKASHIPARA EAST BLOCL LEVEL CLUSTER	INCREASE IN PRODUCTION AND WAGES OF WEAVERS	HANDLOOM	1	2283

<sup>11</sup> Data compiled from Directorate of Economics and Statistics

<sup>12</sup>Data taken from Department of MSME

3	TEXTILES & READYMADE GARMENTS	NAKASHIPARA SOUTH BLOCK LEVEL CLUSTER	INCREASE IN PRODUCTION AND WAGES OF WEAVERS	HANDLOOM	1	1756
4	TEXTILES & READYMADE GARMENTS	NAKASHIPARA WEST BLOCK LEVEL CLUSTER	INCREASE IN PRODUCTION AND WAGES OF WEAVERS	HANDLOOM	1	1692
5	TEXTILES & READYMADE GARMENTS	SANTIPUR BLOCK HANDLOOM CLUSTER -1	INCREASE WAGES AND PRODUCTION	HANDLOOM	1	755
6	TEXTILES & READYMADE GARMENTS	SANTIPUR BLOCK HANDLOOM CLUSTER-II	INCREASE WAGES AND PRODUCTION	HANDLOOM	1	715
7	TEXTILES & READYMADE GARMENTS	DARAPPUR HANDDLOOM CLUSTER	INCREASE WAGES AND PRODUCTION	HANDLOOM	1	699
8	TEXTILES & READYMADE GARMENTS	NAGARUKHRA MAHADEBPUR HANDLOOM DEVELOPMENT CLUSTER	INCREASE WAGES AND PRODUCTION	HANDLOOM	1	647
9	TEXTILES & READYMADE GARMENTS	CHARMAJDIA CHARBRAHMANAGAR HANDLOOM CLUSTER	INCREASE IN PRODUCTION AND WAGES OF WEAVERS	HANDLOOM	1	585
10	TEXTILES & READYMADE GARMENTS	SANTIPUR MUNICIPALITY WARD NO 16 HANDLOOM CLUSTER	INCREASING PRODUCTION AND WAGES	HANDLOOM	1	565
11	TEXTILES & READYMADE GARMENTS	BARASAT HANDLOOM DEVELOPMENT CLUSTER SOCIETY		HANDLOOM	1	545
12	TEXTILES & READYMADE GARMENTS	CHARBRAHMANAGAR HANDLOOM CLUSTER	INCREASE IN PRODUCTION AND WAGES OF WEAVERS	HANDLOOM	1	532
13	TEXTILES & READYMADE GARMENTS	GHOLAPARA FAKIRDANGA HANDLOOM CLUSTER	INCREASE IN PRODUCTION AND WAGES OF WEAVERS	HANDLOOM	1	526
14	TEXTILES & READYMADE GARMENTS	RAMNAGAR PASCHIM HANDLOOM DEVELOPMENT CLUSTER	INCREASING PRODUCTION AND WAGES	HANDLOOM	1	517
15	TEXTILES & READYMADE GARMENTS	SACHIMATA HANDLOOM CLUSTER	INCREASE IN PRODUCTION AND WAGES OF WEAVERS	HANDLOOM	1	515

16	TEXTILES & READYMADE GARMENTS	RUDRAPARA HANDLOOM CLUSTER	INCREASE WAGES OF HANDLOOM WEAVERS AND INCREASE SKILL DEVELOPMENT	HANDLOOM	1	513
17	TEXTILES & READYMADE GARMENTS	VALUKA HANDLOOM CLUSTER	INCREASE IN PRODUCTION AND WAGES OF WEAVERS	HANDLOOM	1	512
18	TEXTILES & READYMADE GARMENTS	NABADWIP UTTARANCHAL HANDLOOM CLUSTER	INCREASE IN PRODUCTION AND WAGES OF WEAVERS	HANDLOOM	1	511
19	TEXTILES & READYMADE GARMENTS	GOURNAGAR HANDLOOM CLUSTER	INCREASE IN PRODUCTION AND WAGES OF WEAVERS	HANDLOOM	1	510
20	TEXTILES & READYMADE GARMENTS	BAGDEBIPUR HANDLOOM CLUSTER	INCREASING WAGES	HANDLOOM	1	510
21	TEXTILES & READYMADE GARMENTS	MALIPOTA HANDLOOM CLUSTER	INCREASE IN PRODUCTION AND WAGES OF WEAVERS	HANDLOOM	1	509
22	TEXTILES & READYMADE GARMENTS	SWARUPGANJ HANDLOOM CLUSTER	INCREASE IN PRODUCTION AND WAGES OF WEAVERS	HANDLOOM	1	508
23	TEXTILES & READYMADE GARMENTS	UTTAR MAHISURA HANDLOOM CLUSTER	INCREASE IN PRODUCTION AND WAGES OF WEAVERS	HANDLOOM	1	508
24	TEXTILES & READYMADE GARMENTS	SANTIPUR MUNICIPALITY WARD NO 1 HANDDLOOM CLUSTER	INCREASING PRODUCTION AND WAGES	HANDLOOM	1	507
25	TEXTILES & READYMADE GARMENTS	BOALIA HANDLOOM CLUSTER	INCREASE IN PRODUCTION AND WAGES OF WEAVERS	HANDLOOM	1	506
26	TEXTILES & READYMADE GARMENTS	NABADWIP HANDLOOM CLUSTER	INCREASE IN PRODUCTION AND WAGES OF WEAVERS	HANDLOOM	1	505
27	TEXTILES & READYMADE GARMENTS	KRISHNAGAR - I BLOCK HANDLOOM CLUSTER	INCREASE IN PRODUCTION AND	HANDLOOM	1	505

			WAGES OF WEAVERS			
28	TEXTILES & READYMADE GARMENTS	BABLABAN BHAGINI NIBEDITA HANDLOOM CLUSTER	INCREASING PRODUCTIO N AND WAGES	HANDLOOM	1	504
29	TEXTILES & READYMADE GARMENTS	BIRPUR HANDLOOM CLUSTER	INCREASE IN PRODUCTIO N AND WAGES OF WEAVERS	HANDLOOM	1	502
30	TEXTILES & READYMADE GARMENTS	KRISHNAPURCHAK HANDDLOOM CLUSTERTT	INCREASING WAGES AND PRODUCTIO N	HANDLOOM	1	457
31	TEXTILES & READYMADE GARMENTS	TEHATTA- I BLOCK LEVEL CLUSTER	INCREASE IN PRODUCTIO N AND WAGES OF WEAVERS	HANDLOOM	1	427
32	TEXTILES & READYMADE GARMENTS	HARINGHATA READYMADE GARMENTS CLUSTER	READYMAD E GARMENTS MANUFACT URING	MSME	26	375
33	TEXTILES & READYMADE GARMENTS	CHAPRA BLOCK LEVEL CLUSTER	INCREASE IN PRODUCTIO N AND WAGES OF WEAVERS	HANDLOOM	1	366
34	TEXTILES & READYMADE GARMENTS	KARIMPUR - II BLOCK LEVEL CLUSTER	INCREASE IN PRODUCTIO N AND WAGES OF WEAVERS	HANDLOOM	1	332
35	TEXTILES & READYMADE GARMENTS	CHANDANPUR HANDLOOM CLUSTER	INCREASE IN PRODUCTIO N AND WAGES OF WEAVERS	HANDLOOM	1	312
36	METAL FABRICATION & FURNITURE	NAKASHIPARA STEEL FURNITURE CLUSTER	STEEL FURNITURES MANUFACT URING	MSME	25	285
37	TEXTILES & READYMADE GARMENTS	KALIGANJ BLOCK LEVEL CLUSTER	INCREASE IN PRODUCTIO N AND WAGES OF WEAVERS	HANDLOOM	1	260
38	TEXTILES & READYMADE GARMENTS	CHAKDAHA READYMADE GARMENTS CLUSTER	READYMAD E GARMENTS MANUFACT URING	MSME	18	250
39	JEWELLERY	RANAGHAT SUB-DIVISION GOLD AND SILVER JEWELLERY CLUSTER	MFG.OF GOLD AND SILVER ORNAMENTS	MSME	19	210

40	METAL FABRICATION & FURNITURE	KARIMPUR- II STEEL FURNITURE CLUSTER	STEEL FURNITURE MANUFACTURING	MSME	20	180
41	TEXTILES & READYMADE GARMENTS	RISHI AUROBINDA HANDLOOM CLUSTER	INCREASING PRODUCTION AND WAGES	HANDLOOM	1	120
42	TEXTILES & READYMADE GARMENTS	B R AMBEDKAR HANDLOOM CLUSTER	INCREASE IN PRODUCTION AND WAGES OF WEAVERS	HANDLOOM	1	116
43	TEXTILES & READYMADE GARMENTS	CHARBRAHMANAGAR MAHILA HANDLOOM CLUSTER	INCREASE IN PRODUCTION AND WAGES OF WEAVERS	HANDLOOM	1	111
44	TEXTILES & READYMADE GARMENTS	UTTAR JOYANIA HANDLOOM CLUSTER	INCREASE WAGES OF HANDLOOM WEAVERS AND INCREASE SKILL DEVELOPMENT	HANDLOOM	1	110
45	TEXTILES & READYMADE GARMENTS	UTTAR RAJAPUR HANDLOOM CLUSTER	INCREASE IN PRODUCTION AND WAGES OF WEAVERS	HANDLOOM	1	110
46	TEXTILES & READYMADE GARMENTS	VIBAKANANDA HANDLOOM CLUSTER	INCREASE WAGES OF HANDLOOM WEAVERS AND INCREASE SKILL DEVELOPMENT	HANDLOOM	1	110
47	TEXTILES & READYMADE GARMENTS	DAHAKULA HANDLOOM CLUSTER	INCREASE IN PRODUCTION AND WAGES OF WEAVERS	HANDLOOM	1	110
48	TEXTILES & READYMADE GARMENTS	FULIA TANGAIL HANDLOOM CLUSTER	INCREASE WAGES AND PRODUCTION	HANDLOOM	1	110
49	TEXTILES & READYMADE GARMENTS	NETAJI SUBHASH HANDLOOM CLUSTER	INCREASING PRODUCTION AND WAGES	HANDLOOM	1	109
50	TEXTILES & READYMADE GARMENTS	BIRNAGAR WARD NO 09 TO 11 HANDLOOM DEVELOPMENT CLUSTER	INCREASING PRODUCTION AND WAGES	HANDLOOM	1	106
51	TEXTILES & READYMADE GARMENTS	GOURANGAPALLY HANDLOOM CLUSTER	INCREASE WAGES AND	HANDLOOM	1	106

			PRODUCTIO N			
52	TEXTILES & READYMADE GARMENTS	BIRNAGAR WARD NO 12 TO 14 HANDLOOM DEVELOPMENT CLUSTER	INCREASING WAGES AND PRODUCTIO N	HANDLOOM	1	106
53	TEXTILES & READYMADE GARMENTS	RADHARANI HANDLOOM CLUSTER	INCREASE IN PRODUCTIO N AND WAGES OF WEAVERS	HANDLOOM	1	105
54	TEXTILES & READYMADE GARMENTS	SRI CHAITANYA HANDLOOM CLUSTER	INCREASE IN PRODUCTIO N AND WAGES OF WEAVERS	HANDLOOM	1	105
55	TEXTILES & READYMADE GARMENTS	AADHAR MANIK HANDLOOM CLUSTER	INCREASING WAGES	HANDLOOM	1	105
56	TEXTILES & READYMADE GARMENTS	2 NO. NUTAN FULIA HANDLOOM CLUSTER	INCREASE WAGES AND PRODUCTIO N	HANDLOOM	1	105
57	TEXTILES & READYMADE GARMENTS	KAPALIPARA HANDLOOM CLUSTER	INCREASE IN PRODUCTIO N AND WAGES OF WEAVERS	HANDLOOM	1	105
58	TEXTILES & READYMADE GARMENTS	BABLABAN HANDLOOM CLUSTER	INCREASE IN PRODUCTIO N AND WAGES OF WEAVERS	HANDLOOM	1	104
59	TEXTILES & READYMADE GARMENTS	DAKSHINPARA HANDLOOM CLUSTER	INCREASE WAGES AND PRODUCTIO N	HANDLOOM	1	104
60	TEXTILES & READYMADE GARMENTS	RAMNAGAR MAA SARADA HANDLOOM CLUSTER	INCREASING WAGES AND PRODUCTIO N	HANDLOOM	1	104
61	TEXTILES & READYMADE GARMENTS	FULIA VIVEKANANDA HANDLOOM CLUSTER	INCREASE WAGES AND PRODUCTIO N	HANDLOOM	1	104
62	TEXTILES & READYMADE GARMENTS	FULIA HANDLOOM DEVELOPMENT CLUSTER		HANDLOOM	1	104
63	TEXTILES & READYMADE GARMENTS	SRI KRISHNA HANDLOOM CLUSTER	INCREASE IN PRODUCTIO N AND WAGES OF WEAVERS	HANDLOOM	1	104
64	TEXTILES & READYMADE GARMENTS	BHAGIRATHI HANDLOOM CLUSTER	INCREASE IN PRODUCTIO N AND WAGES OF WEAVERS	HANDLOOM	1	102

65	TEXTILES & READYMADE GARMENTS	BABALOKNATH HANDLOOM CLUSTER	INCREASE IN PRODUCTION AND WAGES OF WEAVERS	HANDLOOM	1	102
66	TEXTILES & READYMADE GARMENTS	KHUDIRAM HANDLOOM CLUSTER	INCREASING PRODUCTION AND WAGES	HANDLOOM	1	101
67	TEXTILES & READYMADE GARMENTS	CHARMAJDIA HANDLOOM CLUSTER	INCREASE IN PRODUCTION AND WAGES OF WEAVERS	HANDLOOM	1	100
68	TEXTILES & READYMADE GARMENTS	MAA MANASHA HANDLOOM CLUSTER	INCREASE IN PRODUCTION AND WAGES OF WEAVERS	HANDLOOM	1	100
69	TEXTILES & READYMADE GARMENTS	LAXMIPRIYA HANDLOOM CLUSTER	INCREASE IN PRODUCTION AND WAGES OF WEAVERS	HANDLOOM	1	100
70	MACHINERY & EQUIPMENT OTHER THAN TRANSPORT	RURAL CRAFT AND CULTURAL HUB	FOLK INSTRUMENT MFG.	KHADI	1	70

**TABLE A8: DETAILS OF BANKING PROFILES<sup>13</sup>**

Banking Profile									
District -	NADIA	State - WEST BENGAL		Lead Bank - UNITED BANK OF INDIA					
<b>1. NETWORK &amp; OUTREACH (As on 31/03/2019)</b>									
Agency	No. of Banks/Soc.	No. of Branches			No. of non-formal agencies associated			Bank Outreach	
		Total	Rural/Semi Urban	Urban	mFIs/mFOs	SHGs/JLGs	BCs/BFs	Villages	Households
Commercial Banks	18	225	161	64	NA	19634	437	1384	414579
Regional Rural Bank	1	67	63	4	NA	7809	181	580	274538
District Central Coop. Bank	1	23	14	9	NA	NA	NI	673	NA
Coop. Agr. & Rural Dev. Bank	1	5	3	2	NA	NA	NI	NA	NA
Primary Agr. Coop. Society	323	323	323		NA	19106	NI	2637	196697
Private Bank	5	88	37	12	NA	NA	NA	NA	NA
WBFC	1	1		1					
<b>All Agencies</b>	<b>350</b>	<b>702</b>	<b>601</b>	<b>92</b>	<b>NA</b>	<b>46549</b>	<b>NA</b>	<b>2019</b>	<b>848814</b>
<b>2. DEPOSITS OUTSTANDING</b>									
Agency	No. of accounts			Amount of Deposit [Rs.'000]					
	31-Mar-17	31-Mar-18	31-Mar-19	31-Mar-17	31-Mar-18	31-Mar-19	Growth(%)	Share(%)	
Commercial Banks	10281029	1737370	1981360	187851600	205071200	256879600	25.26	89	
Regional Rural Bank	98514	166488	180860	14937600	16143800	17381800	7.67	6	
Cooperative Banks	129090	211334	241013	11578800	12156600	14010200	15.25	5	
Others									
<b>All Agencies</b>	<b>1251593</b>	<b>2115192</b>	<b>2412342</b>	<b>214368000</b>	<b>233371600</b>	<b>288271600</b>	<b>23.52</b>	<b>100</b>	
<b>3. LOANS &amp; ADVANCES OUTSTANDING</b>									
Agency	No. of accounts			Amount of Loan [Rs.'000]					
	31-Mar-17	31-Mar-18	31-Mar-19	31-Mar-17	31-Mar-18	31-Mar-19	Growth(%)	Share(%)	
Commercial Banks	101834	164222	NA	79036837	93179700	124623100	34	88	
Regional Rural Bank	72489	73063	NA	6272700	7607400	7839200	3	6	
Cooperative Banks	177225	179819	NA	5660548	7494900	9005700	20	6	
WBFC/Others				47900	95800	102200	7		
<b>All Agencies</b>	<b>351528.28</b>	<b>413104</b>		<b>87017885</b>	<b>108377900</b>	<b>141579200</b>	<b>31</b>	<b>100</b>	
<b>4. CD-RATIO</b>									
Agency	CD Ratio			Agency	Since inception				
	31-Mar-17	31-Mar-18	31-Mar-19		No frills A/c opened	Household covered			
Commercial Banks	47.43	45.44	48.55	Commercial Banks	644998	656471			
Regional Rural Bank	42.00	47.12	45.10	Regional Rural Bank	361722	368955			
Cooperative Banks	48.89	61.65	66.94	Cooperative Banks					
Others				Others					
<b>All Agencies</b>	<b>47.30</b>	<b>47.30</b>	<b>49.11</b>	<b>All Agencies</b>	<b>1006720</b>	<b>1025426</b>			
<b>5. PERFORMANCE UNDER FINANCIAL INCLUSION (No. of A/c)</b>									
Agency	CD Ratio			Agency	Since inception				
	31-Mar-17	31-Mar-18	31-Mar-19		No frills A/c opened	Household covered			
Commercial Banks	47.43	45.44	48.55	Commercial Banks	644998	656471			
Regional Rural Bank	42.00	47.12	45.10	Regional Rural Bank	361722	368955			
Cooperative Banks	48.89	61.65	66.94	Cooperative Banks					
Others				Others					
<b>All Agencies</b>	<b>47.30</b>	<b>47.30</b>	<b>49.11</b>	<b>All Agencies</b>	<b>1006720</b>	<b>1025426</b>			
<b>6. PERFORMANCE TO FULFILL NATIONAL GOALS (As on 31/03/2018)</b>									
Agency	Priority Sector Loans		Loans to Agr. Sector	Loans to Weaker Sections		Loans under DRI Scheme		Loans to Women	
	Amount [Rs.'000]	% of Total Loans		Amount [Rs.'000]	% of Total Loans	Amount [Rs.'000]	% of Total Loans	Amount [Rs.'000]	% of Total Loans
Commercial Banks	20672400	76	11997900						
Regional Rural Bank	2416800	9	388400						
Cooperative Banks	4075200	15	3537200						
Others/WBFC	36900	0							
<b>All Agencies</b>	<b>27201300</b>	<b>100</b>	<b>19923500</b>	<b>55866600</b>		<b>58900</b>		<b>19553300</b>	

<sup>13</sup>Data taken from PLP report Nabard 2023-24

**TABLEA 9: PRODUCTS EXPORTED FROM NADIA<sup>14</sup>**

ITCHS CODE	SECTION	ITEM DESCRIPTION	SUM OF VALUE (INR)
85051110	Machinery & Equipments	FERRITE CORES	575457194
84749000	Machinery & Equipments	PARTS OF MACHNS OF HDG 8474	318563611
42022220	Raw Hides & Skins	HAND BAGS/SHOPPING BAGS OF COTTON	275986971
29400000	Chemical & Allied Industries	SUGRS CHMCLY PURE OTHR THN SUCROSE LACTOSEMALTOSE ETC SUGR ETHRS AND SUGRESTRS AND THR SLTS BESIDES HDG NO. 2937	183375495
29397900	Chemical & Allied Industries	OTHER	174029913
85043100	Machinery & Equipments	OTHR TRNSFRMRS HVNG A PWR HNDLNG CAPACITY NOT EXCDNG 1 KVA	161629941
5010010	Textiles & Textile Articles	HUMAN HAIR,UNWORKED; WHETHR OR NOT WASHD OR SCOURD	133251926
29242190	Chemical & Allied Industries	OTHER UREINES AND THR DRVTVS SALTS THEREOF	82990577
42022230	Raw Hides & Skins	JUTE HAND BAGS/SHOPPING BAGS.	76122162
29242990	Chemical & Allied Industries	OTHER CYCLIC AMIDES AND THR DRVTVS AND SALTS	58620368

**TABLE A10: FOCUS GROUP DISCUSSION REPORT OF NADIA DISTRICT**

Post FGD Report				
<b>Section A</b>				
<b>Districts Covered</b>		<b>Date</b>		<b>Duration</b>
Nadia		14.08.25		12.30 to 3.30 PM
<b>No. of participants</b>				
<b>Total</b>	50			
<b>Entrepreneurs / Association/Cooperation/Chamber of commerce</b>	29			
<b>Trade Facilitation Institution</b>	12			
<b>Government Stakeholders</b>	2			

<sup>14</sup> Data compiled from Ministry of Commerce and Industry

	5				
<b>IIFT Team Participant</b>	2				
Mr. Raktim Mitra	Mr. Kaustav Bhattacharyya				

### Section B

#### Products

Tant Saree	Muslin Silk Saree	Plastic Recycling	RMG (Men)	RMG (Women)	Vegetables
Hand Made Jewellery	Pottery Items	Terracota			

#### Salient Inputs from the FGD

Products	Physical Infra Core	Physical Infra Support	Soft Infrastructure	Others	Activities
		Nadia Chamber of Commerce has set up a park for RMG & Handloom, and have offered land for setting up of Export Hub	Nadia Chamber of Commerce has urged for the need of Handholding Programs & some promotional activities of their products	Nadia Chamber of Commerce has urged for the need of Packaging Centre along with Testing Lab Facility centre	
RMG (Men & Women)				AZO Test Lab required.	Import through SAFTA is duty free but for export duty is applied for Bangladesh. Want duty free export through SAFTA with GST only. AZO Test Lab required.
Taant & Muslin Silk		Packaging Centre is required for attractiveness & durability of the product	Assistance for GI tag for the product is required. Marketing Assistance is required. Handholding Support required for Exports.	Financial Assistance is required. AZO Test Lab required.	

Hand Made Jewellery			Handholding on Design & Development as per the latest market trend. Marketing Assistance for Exports. Want Buyer Seller Meet.		
Vegetables		Packaging Centre is required for durability of the product		Certification Agency / Lab facility is required nearby	
Others (Jute Bag, Rubber Industries, Drugs, Terracota)			Marketing Assistance is required. Handholding Program for Export is required.	Certification Agency / Lab facility is required nearby	