

DISTRICT PROFILE

MALDA



1. INTRODUCTION

Malda district, located in central-northern West Bengal, serves as a vital link between North and South Bengal. The district has rich archaeological and cultural heritage. The district is strategically important due to its position along the **National Highway and rail corridors connecting Kolkata with North Bengal and the Northeast**. Malda's fertile alluvial plains, fed by the Ganga, Mahananda, and Kalindri rivers, make it an **agricultural hub**, especially famous for its **Mango** and **Processed products**. With its blend of heritage, trade, and agriculture, Malda stands as both a cultural and economic centre in the region.

2. CLIMATIC CONDITIONS

The climatic conditions in Malda are characterized by a warm and temperate atmosphere. The summers are much rainier than the winters in Malda. This location is classified as Cwa by Köppen and Geiger. The temperature in this location is approximately 25.1 °C/ 77.2 °F, as determined by statistical analysis. The annual precipitation in this location is approximately 1692 mm/ 66.6 inch.¹

3. ADMINISTRATIVE PROFILE

Malda has 12 Assembly Constituencies, Habibpur (ST), Gazole(SC), Chanhcal, Harishchandrapur, Malatipur, Ratua, Manikchak, Maldaha (SC), Englishbazar, Mothabari, Sujapur, Baishnabnagar. The district comprises two subdivisions: Chanchal and Malda Sadar. Chanchal consists of six community development blocks: Chanchal–I, Chanchal–II, Ratua–I, Ratua–II, Harishchandrapur–I, and Harishchandrapur–II. Malda Sadar subdivision consists of Old Malda municipality, English Bazar municipality, and nine community development blocks: English Bazar, Gazole, Habibpur, Kaliachak–I, Kaliachak–II, Kaliachak–III, Manickchak, Old Malda, and Bamangola. English Bazar is the district headquarters. There are 11 police stations, 15 development blocks, 2 municipalities, 146-gram panchayats, and 3,701 villages in this district.

¹ Information gathered from [Climate Data](#)

The administrative structure of Malda is depicted below by Fig 1.

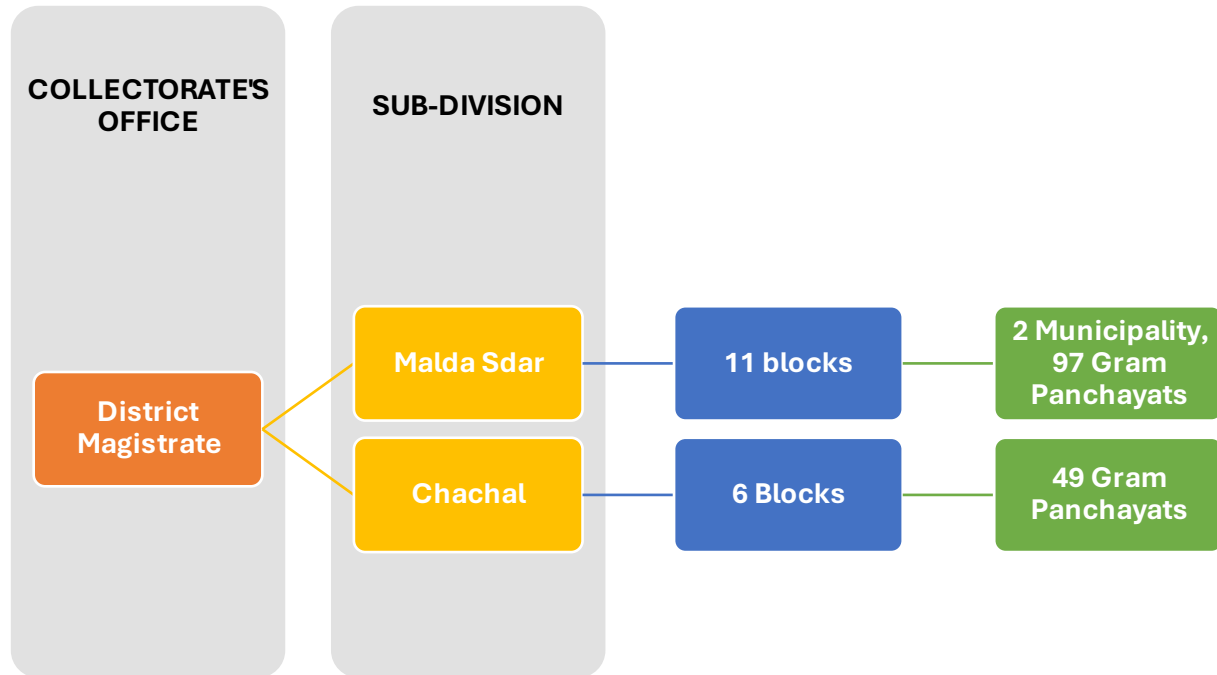


Fig 1: Administrative order of Malda District

Source: Malda District Website

Other than municipality areas, each subdivision contains community development blocs, which in turn, are divided into rural areas and census towns. In total there are 10 urban units, 2 municipalities, and 3 census towns. English Bazar and Old Malda form an urban agglomeration.

4. LOCATION AND GEOGRAPHY

Malda is a district covering an area of **3733 sq Km** with Bihar and Uttar Dinajpur at the North, Murshidabad at the South, Bangladesh at the east, and Jharkhand and Bihar at the West. It shares a **165.5 km international border with Bangladesh**. Having a central location it is an important junction and entry point to Siliguri from South Bengal. The river Ganga makes its first entry into West Bengal near Manikchak of Malda. As it is a low-lying basin, it is prone to flood.

Malda lies at 347 km (215 miles) north of Kolkata, the capital of West Bengal. District headquarters is English Bazar, also known as Malda.

The district having different physical and physiographical characteristics is covered by alluvium of two different ages. Older alluvium dominates the Barind region while newer alluvial dominates both Tal and Diara regions. This area comprises with thick sequence of alluvial fan and river valley deposits. The geological formations of the study area were divided by three tentative ages, Holocene period, early Holocene to Pleistocene period and Pleistocene period. The Malda formation, the Shaugaon formation, Ganga Mahananda formation and the present-day deposits were formed in Holocene period. Baikunthapur formation was formed in early Holocene to Pleistocene period. Barind formation was formed in Pleistocene period. In English-Bazar block vast area was covered by Ganga-Mahananda formation where Manickchak block mainly covered by present day deposit.²

5. DEMOGRAPHY

The 2011 Census Data entails, there are about 39,88,845 people in Maldah. The sex ratio is, 944. The population density of the district is approximately 1069 people per sq. km. About 13.59% of the population is urban, which means the majority, 86.41% is rural population. The literacy rate of the district is, 52.29%. The demographic distribution of the district is presented in Table 5.1, in detail.

Table 1 Demographic Distribution of Malda (Unit: Lakh People)

Parameters	Total	Rural	Urban
Number of Households	8.47	7.34	1.13
Total Population (Persons)	39.89	34.47	5.42
Total Population (Males)	20.52	17.68	2.83
Total Population (Females)	19.37	16.79	2.58
Literates (Persons)	20.86	17.32	3.55
Literates (Males)	11.52	9.61	1.91
Literates (Females)	9.34	7.70	1.64
Total Workers (Persons)	15.38	13.34	2.04
Total Workers (Males)	10.86	9.36	1.50
Total Workers (Females)	4.51	3.98	0.54
Agricultural Labourers	5.46	5.34	0.12
Workers in Household Industries	1.97	1.71	0.26

Source: Census Data, 2011

² Information gathered from [District Survey Report](#) of Malda, 2022

6. LOGISTIC INFRASTRUCTURE PROFILE

Malda is a multimodal transit district in central-northern West Bengal where national highway road links, a major railway corridor, the Ganga River / Farakka infrastructure, a land-border customs point, and local industrial land combine to support movement of agricultural and industrial freight — but air connectivity, large container terminals/ICDs and widely distributed cold-chain capacity remain limited.

Roadways

NH-12 (previously NH-34) runs through the district and crosses the Ganga near the Farakka structure — giving direct road link north–south across West Bengal and to Dalkhola/Kolkata corridors. This is the primary trunk road for goods movement by truck. District and state roads feed agricultural production areas and the Malda industrial park into NH-12; road quality varies and some rural feeder roads are narrow.

NH 131A also passes through Malda. The Highway starting from Malda, connecting Ratua and Debipur in the State of West Bengal, Connecting Ahmedabad, Manihari, Katihar on NH31 and terminating at Purnia on NH-27 in the State of Bihar.³

Railways

Malda Town (MLDT) and Malda Court sit on the Howrah–New Jalpaiguri Or, Sealdah–New Jalpaiguri mainline; the district enjoys frequent long-distance and freight services connecting to North Bengal, Siliguri, and the rest of India. Rail is a primary mode for bulk transit from Malda.

Rail is used for agricultural bulk (mango, jute, rice), regional industrial goods, and containerized freight where nearby terminals/ICDs are available

Waterways

The Farakka Barrage and its feeder canals dominate the local river regime — they influence navigation and the feasibility of river freight. National Waterway-1 (Ganga–Hooghly stretch) improvements in the broader corridor affect potential river/feeder movement near Malda, but

³ [Ministry of Road Transport & Highways](#)

formal and active commercial river terminals in the district are absent and navigation is season-sensitive, subject to capacity constraint.

Cross-border trade facilities

Land Port **Mahadipur** is located along the international border between India and Bangladesh, in the district of Malda. It is among the **most important land ports** of West Bengal in terms of **volume of trade**. Mahadipur is an important border checkpoint as it is gateway of North Bengal on the Malda-Rajshahi Bangladesh route. Rajshahi nicknamed as Silk \City or City of Education, is a major urban, commercial and educational centre of Bangladesh.

The major commodities **exported** via LCS Mahadipur are **soyabean extraction, rapeseed extraction, fresh fruits, onion, stone chips, maize, dry fly ash, dry chilies and raw hides**. The major commodities **imported** are **crude rice bran, plastic cerates, jute yarn, jute bags** etc.

Land Port Mahadipur is situated on the Gour Road that connects to National Highway (NH)-12, which is approx.13 kms from the Land Port . The Land Port is also near the Gour Malda Train Station, which is located at a distance of approx. 15 kms.

Air connectivity

Malda has a small airport/airstrip (LDA) but regular commercial services are very limited / suspended historically. For practical air freight and passenger connectivity, Bagdogra or nearby airports are used that are typically ~200–250 km by road. This constrains time-sensitive cargo flows.

Nearest airport from Malda, capable of supporting logistics is Bagdogra.

➤ **Bagdogra Airport: Freight & Logistics Infrastructure**

Basic airport specs (road / airside relevant)

- Location: Near Siliguri, West Bengal; serves North Bengal and nearby states.
- Runway: Single runway 18/36, length ~2,754 meters (~9,035 ft), concrete / asphalt surface. Suitable for narrow-body aircraft like A320, B737 etc.
- Customs status: It is a *customs airport*. That means import/export procedures are possible, which is essential for international freight.

Existing freight / cargo / perishable infrastructure

- **Centre for Perishable Cargo (CPC):**

There is a CPC being developed adjacent to Bagdogra by Siliguri-Jalpaiguri Development Authority (SJDA), with APEDA & ASIDE funding. Purpose is to serve fresh fruits, vegetables, flowers etc.

- Project area: about **3 acres**.
- Cost: ~ ₹ 6.40 crore (~ Rs 6,40,10,000) for the initial CPC, with some funds for approach road etc.
- Management: The facility will be handed to AAI/AAICLAS for operation & maintenance, which is helpful for integrating with airport operations.

- **Cargo storage / cold storage facility:**

A perishable cargo storage facility, adjacent to Bagdogra Airport, was built back in ~2010 by SJDA on ~3.91 acres (≈ 1.58 hectares) at cost ~ Rs 6.68 crore.

- However: It was not operational initially due to missing permissions / licenses; cooling / AC systems became defunct for some period.
- Recent developments: AAI has agreed to take over its maintenance for 20 years; it is planned to be operationalised.

- **Auction / perishables market / linkage centre:**

A perishable cargo complex / auction centre for local produce (pineapples etc.) was announced / planned by SJDA near Bagdogra, to help better price discovery etc.

- **Cargo tonnage / throughput:**

In recent data (April 2024 – March 2025), Bagdogra handled ~ **8,952 tonnes** of cargo. Planned/upcoming expansions that affect logistics⁴

7. EXPORT INFRASTRUCTURE

Malda's export infrastructure is primarily centered on land-based trade with Bangladesh, leveraging its strategic border location. While it has some air and rail facilities, these are less developed for international cargo. The district relies heavily on road connectivity for its key

⁴ [MilleniumPost](#) ; [Indian Infrastructure](#)

agricultural and sericultural exports. The two primary Land Custom Stations (LCS) in Malda, West Bengal, are **Mahadipur** and **Singabad Railway Station**.

Land Custom Stations in Malda

- **Mahadipur (Kotawalighat)** : This is a key road-based LCS on the India-Bangladesh border, handling the movement of goods between Malda and Chapainawabganj in Bangladesh. It is a significant port for trade in the region.
- **Singabad Railway Station**: This station serves as a railway LCS for trade with Bangladesh. It is located on the Malda-Singabad-Amhura section of the North-East Frontier Railway line.

Cold storages in Malda

There are 5 Cold storages in Malda according to the National Horticulture Board. Four of these are designed for storing Potato, while three of these are presently being used for in multi-purposeful manner.

The Malda Cold Storage Pvt. Ltd. has the most capacity of 5000 MT. It has One chamber. The storage is designed for storing Potato. Table A1 holds detailed data of these storages.

Warehouses in Malda

According to the Warehousing Development and Regulatory Authority, there are two warehouses in the district.

- **Central Warehouse**: The Central Warehouse of Malda is located in Narayanpur. It is managed by the Central Warehousing Corporation. It has a capacity of 18,664 MT. The warehouse has registration valid up to, 30.01.2028.
- **SWC Malda**: It is managed by the West Bengal State Warehousing Corporation and has a capacity of 9,491 MT. The registration of this warehouse is valid up to 05.05.2025.

The details of these warehouses are present in Table A2, in the Annexure Section.

8. AGRICULTURE PROFILE

Agriculturally northern and southern parts of the district are distinctly different. The northern parts having better ground water situation vis-a-vis irrigation facility have developed agriculturally with diversified cropping pattern and high cropping intensity reaching up-to 280% in some parts. The southern part, particularly the Barind tract, have less irrigation facility due to difficult Soil Strata resulting in predominantly mono cropped areas depending on kharif paddy, thus achieving lesser cropping intensity. The Gangetic belt has a traditional area under mulberry cultivation on sericulture. The central and southern parts of the district have historical dominance on horticultural orchard crops.⁵

The major crops of the district are, Rice, Jute, Maize, Potato and Sugarcane. Rice has the most production, that of 6,33,851 Tonnes, and share of 28.9%. Following are Jute (19.4%), Maize (17.1%), Potato (15.4%) and Sugarcane (10.7%). The rest of the crops together, take about 8.5%. Yield-wise Sugarcane dominates the crop-basket, with a share of 52.9%, followed by Potato (17.3%). Rice covers the most land, that of 1,95,088 Ha., followed by Maize 51,321 Ha.

Further details of the agricultural crops can be found in Table A3, in the Annexure section.

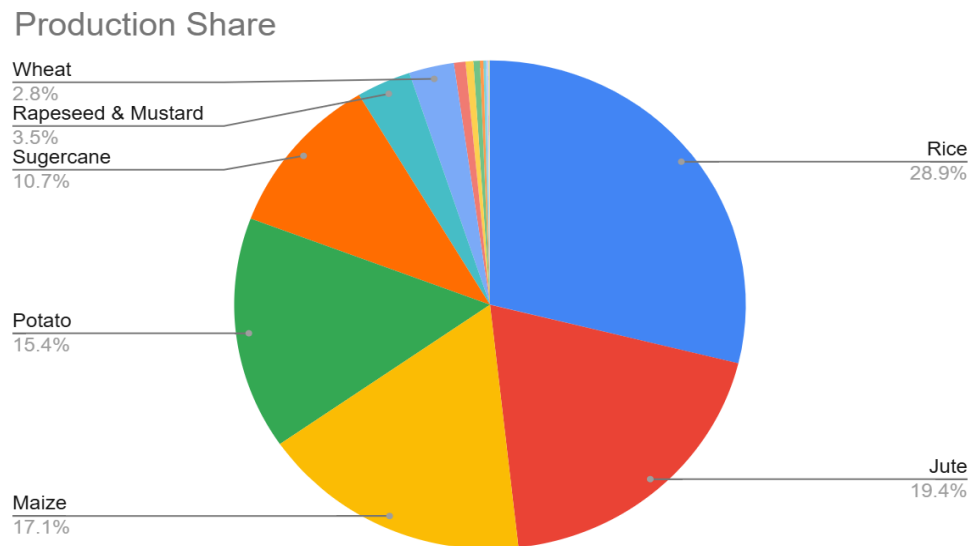


Fig 2: Agricultural Production of major crops of Malda

⁵ [District Irrigation Plan](#)

Horticulture

Due to the agricultural backbone of its economy, Malda has a fair range for horticultural produces.

Table 2: Major Fruit production of Malda

Name	Area in (Thousand ha)	Production in '000 MT (2023-24)
Mango	31.832	379.737
Banana	1.612	27.267
Papaya	0.307	10.448
All fruits	37.116	446.937

Source: "Report from the Directorate of Horticulture Dept. of FPI & H, Govt. of W.B."

- The major fruits of the district are Mango, Banana and papaya.
- Mango is the most cultivated fruit in Malda. Amongst the total production of fruits, 84.96% is contributed by Mango.

Table 3: Major Flower production of Malda

Name	Area in (Thousand ha)	Production (2023-24)	Unit
Marigold	0.093	0.689	000 MT
Tuberose	0.025	0.383	Crore Sticks
Gladiolus	0.01	0.135	Crore Sticks
All Flowers	0.178	0.574	Crore Sticks
All Flowers	0.178	0.781	000 MT

Source: "[Report from the Directorate of Horticulture Dept. of FPI & H, Govt. of W.B.](#)"

- For Flowers measured in Crore sticks, Tuberose is the major horticultural output, with a share of 66.73%.
- Apart from Tuberose, Gladiolus also gets cultivated here with a share of 23.52%.
- Marigold is measured in Thousand MTs and has a share of 88.22%.

Table 4: Major Vegetables production of Malda

Name	Area in (Thousand ha)	Production in '000 MT (2023-24)
Brinjal	13.258	223.232
Cabbage	4.911	121.474

Cauliflower	4.074	94.351
Ladies Finger	4.038	45.392
Other Cucurbits	3.476	41.491
Tomato	3.164	37.719
Radish	2.187	33.433
All Vegetables	58.335	783.642

Source: "Report from the Directorate of Horticulture Dept. of FPI & H, Govt. of W.B."

- Brinjal is the most cultivated vegetable in the district, with a share of 28.49%.
- Next are Cabbage and Cauliflower with production shares of 15.50% and 12.04% respectively.

District	Name	Major Commodities Trading
Malda	Samsi Sub Market Yard	Potato, Mango, Brinjal, Onion, Ladies Finger, Garlic, Pointed Gourd, Cabbage, Cauliflower, Carrot

Source: <https://wbagrmarketingboard.gov.in/e-Nam%20Market.html>

- Hence, majority of the vegetables, being traded in the Agricultural Mandi are being produced in the district.

9. INDUSTRIAL PROFILE

Malda district's economy is primarily **agro-based**, with industry developing around its rich agricultural resources. The district is especially known for **horticulture and agro-processing**, as it is one of India's leading producers of **mangoes and litchis**. Processing units for mango pulp, jams, pickles, and juices form an important industrial activity. Malda also has a long tradition of **silk and handloom industries**, particularly **Malda Silk (Tussar and Mulberry)** and **cotton handloom weaving**, which sustain rural livelihoods.

➤ **Industrial Parks**

▪ **Malda Industrial Park - Phase I**

Malda Industrial Park was established in 1987 in the Malda district of West Bengal. The site is located 10 km away from the Malda town along the National Highway – 34 (Now NH - 12) towards

Raigunj. It is classified into two phases which are located on either side of National highway - 34. Malda is the district headquarter of Malda district and lies to the Southern fringe of North Bengal. Food processing, Cold storage, agro farming, and fishery are the major industrial activities in this region.

The park covers 164 Acres area, amongst which 148 acres is allottable. There are 79 industrial units in the park. One amongst these, employs more than 100 people. There are a total of 1041 people employed here. The main sectors of production in this park are, **Agro processing, Starch and Chemicals, warehousing, Petroleum products and Plastic products, Engineering units.**

- **Malda Industrial Park - Phase II**

The Malda Industrial Park, Phase – II is established over 88 Acres of land, amongst which 80.62 acres is allottable. There are 2 industrial units in it. The major concentration of this park is on **Agro/ Food processing.**

- **MSME Clusters**

There are total 21 MSME registered clusters in Malda. The Malda Bee Keeping and Honey Processing Cluster is the largest among them, in terms of employment capacity. It employs 4068 people and has 479 units.

There are total 7 kind of clusters. Those are,

- **Food Products & Processing**
- **Plastic Products**
- **Jute & Other Fibre Based Products**
- **Clay & Ceramic**
- **Metal Fabrication & Furniture**
- **Wooden Furniture & Allied Products**
- **Textiles & Readymade Garments**

The most frequent clusters here are from the sector Metal Fabrication & Furniture. This sector employs a total of 801 people.

Further details of these clusters are available in Table A4, in the Annexure section.

WBKVIB Cluster

The is a Food (Mango) Processing cluster at 'Anandamayee Mahila Sahgha' at Arapur,Kotwali, Malda the main products produced here are, **Jam, Jelly, Juice,Bar (Aamsatta), Pickles from Mango, Tomato sauce, Potato Chips, Serpas, products from pulses (like bori) etc.**

About 70 SHGs with 800 women members work here.⁶

Further, there is a [KVIC society of Malda Silk Khadi Samiti](#). It roduces Cotton Muslin and Silk. It has 95 Spinners and 11 Weavers. The ultimate products range from Cotton & Muslin- 40^s - 80^s- Fabric- white. Silk saree- Printed to Ketiya, Keitya Matka, Matka etc.⁷

10.BANKING PROFILE

The District is having 20 Commercial Banks functioning through 191 branches of which 164 are rural branches. The district is served by 60 branches of one RRB, viz. Bangiya Gramin Vikash Bank of which 58 are rural branches. Besides, Malda District Central Co-operative Bank and Malda ARDB are also functioning in the district with 18 and 10 branches respectively. Out of this 191 Commercial Bank branches, 6 Private banks are working in the district Head quarter.

Punjab National Bank is the Lead Bank in the District.

As on 31 March 2023, total deposit of all banks in the district was ₹1382278.00 lakh. As on 31 March 2023, total advances of all banks in the district was ₹835272.00 lakh. The CD ratio in the district as on 31 March 2023 was 60.43% which is significantly higher than CD ratio as on 31 March 2022 i.e. 54.59%⁸.

⁶ Data compiled from West Bengal Khadi Village Industrial Board

⁷ Data compiled from West Bengal Khadi Village Industrial Board

⁸ PLP Report of Malda, NABARD

11.ODOP SECTOR

Silk & Silk Products

Malda is renowned for its traditional silk, especially **Malda Silk and Baluchari sarees**, known for fine texture and intricate designs, forming a vital part of the district's handloom and textile-based economy.

Makhana

Makhana (fox nuts) of Malda is a nutritious aquatic produce valued for its high protein, low-fat content, and growing demand as a healthy snack and ingredient in food processing.

Mango and Processed products

Malda, known as the "Mango City of Bengal," is famous for its high-quality varieties like Lakshmanbhog, Himsagar, and Fazli, with growing industries in mango pulp, pickles, jams, and other processed products that add value to the local economy.

There are three ODOP products identified for Malda districts. Malda has received Geographical Indication (GI) tags for several of its products, most notably its famous **mangoes**: Fazli, Lakshmanbhog, and Himsagar.

12.EXPORT PROFILE

The exports of Malda is more or less stable down the years, in terms of the growth of 0.51% during 2022-23 to 2024-25.

The products exported from the district are listed below, in Table in Annexure.

- Therefore, **Starch of Maize** has the largest export volume from the district with a contribution of **49.85%**.

The agrarian strength of Malda is visibly evident in the export basket of the district. Amongst the 10 exported products, 7 are agricultural products. Together they constitute 70.9% of the total export volume of the district. After them there is the food Processing industry, sharing 23.2% of export,

majorly producing Sugarcane processed products. Lastly, there is the Industrial sector manufacturing Tyres with a mere share of 5.9%. (Refer Table A5 in the Annexure).

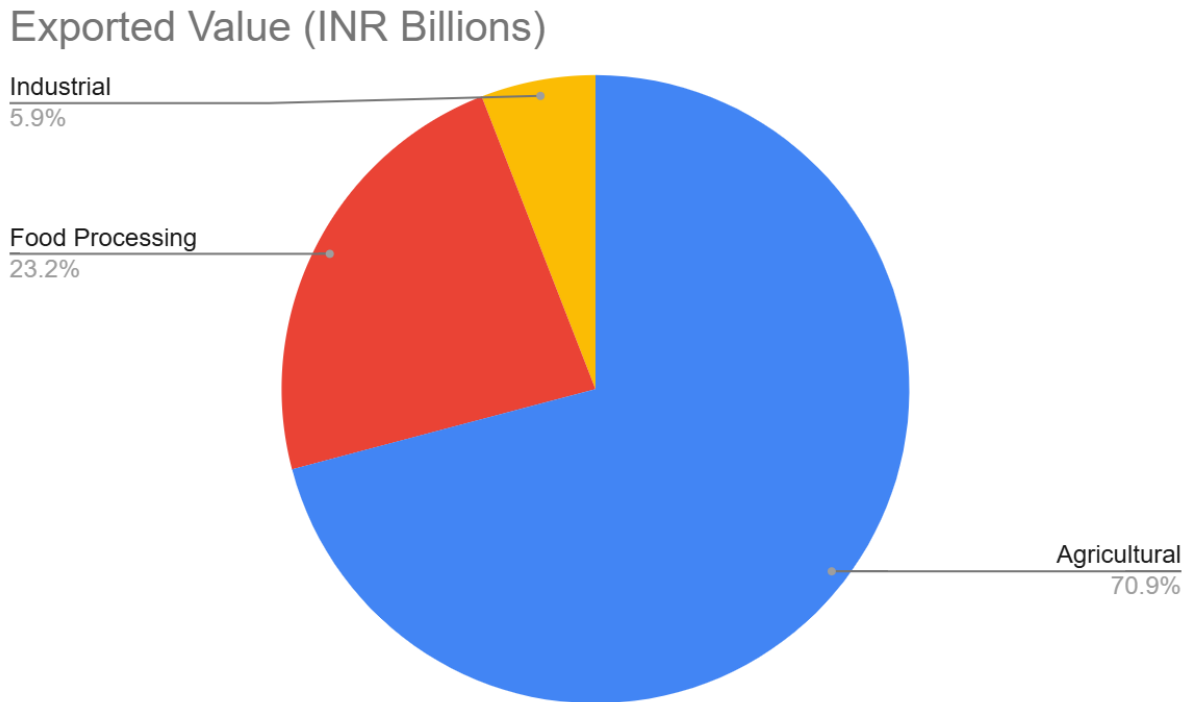


Fig 3: Sectorial share of Exports for Malda

Product Market Analysis

This section analyses the potential of the markets, associated with the exporting scenario of Malda.

As observable from Table 5 given below, The Indian export of **Maize Starch (11081200)** has grown by 212.47% in the five-year span considered. The global demand has increased by 30.74% as well, that ensures a growing prospect, which India is trying to exploit, more exhaustively, as given by its first rank in the global exports and the rapid rate of growth in exports.

Beet Molasses (17039010) has had growing exports as well and that also by an enormous 1796.01%. The market demand has increased by 12.41%. India is ranked sixth amongst the global competition, as an exporter. The rate of increment shows the readiness of India to take-on higher competitors in this market, for which top importing markets like United Kingdom, Bangladesh, Hungary, Thailand etc. may be good target markets.

The **Vegetables** given by **07139090**, has also grown by 442.79% in exports for India. The world imports have grown by 58.13%, that shows prospects of sustainable market exposure. India is globally the second exporting country of this product.

In the global supply market of **Tyres (40112090)** India is at the eleventh position. The exports have grown by a mere 12.55% in the five-year span considered, while the global demand has increased 42.67%, that shows the incapability of India to capture the market. Top importing markets like Germany, Mexico, Canada etc. may be options to revive the Indian exporting trend in the particular market.

The market for **Bengal Grams (07132020)** have grown similarly in both the supply (97.6%) and the demand (94.08%) side, down the concerned years. India is the fourth largest exporter of the product, taken globally. India itself, however, is the top most importer of the same good in the global market. This may prove the scope for potential or ongoing value addition within the domestic economy.

India has grown exporting **Lentils (07134000)** by 114.43%. The global demand has increased by 47.17%. India, however, is the topmost exporter of the good.

The Indian export of **Beans of Spices (07133110)** has increased by 331.07%. There is decent growth in the world imports as well (77.44%); India being the fourth largest exporter in the market. India itself is the top importer as well, that shows some potential opportunity of value addition in the Indian market.

For **Onion (07031019)** the Indian exports have decreased by 15.37%, in the span of 2023 to 2024. However, the global imports have improved by 29.95%.

In the market for **Glucose**, given by **(17023010)**, both the Indian supply (81.40%) and the global demand (68.75%) have grown in decent pace. India is at the ninth position in the global exporter's list. Markets like Germany, Mexico, USA may possess potential.

Table 4: Export Potential and Prospect of Malda products

Export Status	HS Code	Product Details	Exported value in 2020	Exported value in 2021	Exported value in 2022	Exported value in 2023	Exported value in 2024	Export growth of India in five years (in %)	World Import Growth of the sector @ 6 digit in five years (in %)	Top five importers of India	Top ten importer of the sector @ 6 digit in world market	India's rank in world exporter list of the sector
Currently exporting from the district	11081200	Maize starch	89,108	189,902	223,275	255,277	278,433	212.47	30.74	Malaysia, Indonesia, Viet Nam, Thailand, Korea	Malaysia, Germany, Indonesia, France, Mexico, United Kingdom, United States of America, Canada, Italy, Netherlands	1
	17039010	Beet molasses resulting from the extraction or refining of sugar: Molasses (excluding cane) edible	1,579	3,813	1,158	21,977	29,938	1796.01	12.41	UAE, Korea, USA, Turkiye, Canada	United Kingdom, Bangladesh, Hungary, Thailand, Italy, Spain, Canada, United States of America, Malaysia, Belgium	6
	07139090	Dried, shelled leguminous vegetables, whether or not skinned or split (excluding peas, chickpeas, beans, lentils, broad beans, horse beans and pigeon peas): Other of hdg. 071390	5,102	4,992	11,591	21,994	27,693	442.79	58.13	Bangladesh, Viet Nam, United States of America, Canada, United Arab Emirates	China, Pakistan, United States of America, Saudi Arabia, Bangladesh, Canada, Malaysia, Netherlands, Kuwait, United Arab Emirates	2
	40112090	New pneumatic tyres, of rubber, of a kind used for buses and lorries (excluding tyres with lug, corner or similar treads): Other tyres used on buses/lorries	189,421	260,554	228,679	195,913	213,201	12.55	42.67	USE, UAE, Brazil, Philippines, Bangladesh	United States of America, Germany, Mexico, Canada, France, United Arab Emirates, Italy, Netherlands, Brazil, Australia	11
	07132020	Dried, shelled chickpeas "garbanzos", whether or not skinned or split: Bengal gram (desi chana)	41,289	37,250	65,978	90,358	81,605	97.64	94.08	Bangladesh, Iran, UAE, USA, UK	India, Pakistan, Türkiye, Bangladesh, Algeria, United Arab Emirates, Saudi Arabia, Iraq, United States of America, Spain	4

07134000	Dried, shelled lentils, whether or not skinned or split	18,634	10,366	68,975	137,779	151,452	712.77	40.67	Bangladesh, Iraq, Djibouti, United Arab Emirates, Malaysia	India, Türkiye, Bangladesh, United Arab Emirates, Iraq, Egypt, Algeria, Pakistan, Sri Lanka, Canada	5
10063010	Semi-milled or wholly milled rice, whether or not polished or glazed: Rice parboiled	1,807,787	2,965,216	2,769,668	3,151,222	3,876,450	114.43	47.17	Benin, Guinea, Côte d'Ivoire, Togo, Somalia	Indonesia, Philippines, Saudi Arabia, Iraq, United States of America, Malaysia, Côte d'Ivoire, Iran, United Arab Emirates, Benin	1
07133110	Dried, shelled beans of species "Vigna mungo [L.] Hepper or Vigna radiata [L.] Wilczek", whether or not skinned or split: Beans of the spp vigna mungo (l.) hepper	17,355	48,635	31,919	61,873	74,812	331.07	77.44	Bangladesh, United States of America, United Arab Emirates, Canada, United Kingdom	India, China, Viet Nam, Indonesia, Japan, United States of America, United Arab Emirates, Thailand, Dominican Republic, Philippines	4
07031019	Fresh or chilled onions and shallots: Other onions fresh or chilled				430,161	364,044	-15.37	29.95	Bangladesh, United Arab Emirates, Sri Lanka, Malaysia, Kuwait	United States of America, United Kingdom, Malaysia, Canada, Germany, Netherlands, Bangladesh, Viet Nam, United Arab Emirates, Sri Lanka	4
17023010	Glucose in solid form and glucose syrup, not containing added flavouring or colouring matter and not containing fructose or containing in the dry state, < 20% by weight of fructose: Glucose liquid	32,138	60,333	79,405	64,981	58,297	81.40	68.75	Indonesia, Kenya, Tanzania, Nepal, United Arab Emirates	Germany, Mexico, United States of America, Netherlands, United Kingdom, Indonesia, France, Philippines, Belgium, Canada	9

Source: Dara compiled from Trade Map

13.SWOT ANALYSIS

Studying and examining the different aspects of the district and also collecting data from the primary and secondary sources and the focus group discussions conducted in the district, the SWOT Analysis of the district in terms of export development has been depicted below

<p>STRENGTHS</p> <ul style="list-style-type: none"> • Rail, Road & Air Connectivity • Two LCS at Mahadipur and Singabad Railway station • Existence of industrial parks and organized clusters • Availability of skilled workforce • Diverse specialization in agricultural products for value additions. • Presence of industrial units for agro products processing. • Focus on unique products like Malda silk and makhana. 	<p>WEAKNESSES</p> <ul style="list-style-type: none"> • Poor export infrastructure and robust CFCs in the clusters • Singabad LCS is non-functional. • Poor support services in the Mahadipur LCS • The LCS passing through Bangladesh could not exploit Nepal market. • Requirement of Export Facilitation and International Marketing Assistance • Lack of support for R&D, Quality Certifications • The unique products of the district were not exploited for their export potential.
<p>OPPORTUNITIES</p> <ul style="list-style-type: none"> • Massively growing international market for Indian suppliers in Food Processing industry, especially for .Beet Molasses, Shelled Lentis etc. • E-commerce exports are gaining momentum 	<p>THREATS</p> <ul style="list-style-type: none"> • Lack of proper infrastructure in Waterways to enable fright control opportunities. • Lack of facilities in the clusters leading to migration of value addition to other districts/states • Stricter environmental and food safety requirements in international markets.

<ul style="list-style-type: none"> • Supportive schemes of both the Central and State Governments for exports • Back-up of the agricultural sector • Emerging new technologies in the food processing sector. 	<ul style="list-style-type: none"> • Lack of facilities in the clusters leading to migration of value addition to other districts/states • Emergence of ESG requirements and other non-tariff barriers in international markets
--	---

14. EXPORT CHALLENGES OF THE DISTRICT

Malda district is another agriculture-based district of West Bengal, producing rice, jute, maize, potato, mangoes, litchi and other agricultural products. The major contributions for exports from the district is accounted by agricultural and processed food products (94.1%). This is followed by industrial products (5.9%). The exports are majorly done by the big firms and traders in and outside the district supported by the MSME units, FPOs and SHGs. Though there are two LCS in the district, one is non-functional, and the other has major infrastructure deficiencies. The major export challenge for the FPOs, SHGs and MSMEs in the district is entrepreneurship for exports. Some of the potential products like Malda silk and makhana are still not explored properly for international markets.

Infrastructure and logistics

- Warehouse and cold storage facilities: The district uses the cold storage facilities for potato and warehouses for rice. Given the product profiles of the district the availability of warehouses and cold storage facilities are limited.
- The district has two Industrial parks and 21 clusters representing diverse products like Honey, mango products. Pack houses and CFCs are required in the clusters as most of them food processing clusters.
- Transport: Two national highways cross this district connecting Ahmedabad and Bihar. Long-distance and freight services rail transport connecting rest of the country is also available. The utility of inland waterways through the Farakka Barrage is very limited due to non-availability of commercial terminals.

Market access and finance

- Difficulty reaching export markets: MSMEs/SHGs/FPOs, particularly in food processing and handloom sectors function as captive units for bigger firms and face difficulties in accessing international markets due to lack of awareness which not only denies direct export but also fetches low price. The food product and other cluster exports from the district is carried out majorly by traders.
- Limited access to formal credit: Financing challenges, such as high initial investment costs for upgrades to infrastructure or technology, are significant barriers for many small steel/fabrication units. Most of the MSMEs avail trade and supplies credit as provided by the buyers of bigger units.
- Weak export strategy: Though government initiatives exist to boost exports, there are gaps in the district-level execution of a robust strategy for products with high export potential mainly for product diversification.
- The SEFC should make specific interventions to implement the district level initiatives.

Operational and Environmental challenges

- Climate change impacts: As the district is highly dependent on agriculture and horticultural products, it is subjected to the high risk of climate change and lowering of the water table.
- Irregular rainfall, frequent floods, and climate changes pose significant risks to both agriculture and food processing sectors. Unpredictable weather directly disrupts crop yields.
- Lack of modern technology: The MSME units being captive suppliers are devoid of pressure for innovation and lack modern machinery and technological knowledge to improve productivity and innovative products.

GIST OF THE ANALYSIS

The following are the salient points which emerge from the above discussions:

- The major export of the district is contributed by Agriculture and food processing sector which accounts for around 94.1% of the total exports as reported in the year 2024-25, followed by 5.9 % of industrial products. Though the district hosts industrial parks and clusters for diversified products like Malda silk, Makhana etc their export contribution is minimal.
- Opportunities for value added exports of food processing products and silk products are high.
- The district has insufficient warehouse and cold storage facilities for agricultural and processed food products like fruit juices and other such preparations.
- Several units located in the clusters are majorly acting as feeder units for bigger firms in the district.
- The LCS located in the district are to be made more active and robust.

EXPORT ACTION PLAN SUGGESTED

Based on the above facts, analysis of the data and the input from the stakeholders, the following action plan is suggested. The action plan also indicates the desired output of the strategic actions, the responsible agency and the proposed intervention/tool for implementation. It has also been highlighted the activity/activities where a DPR may be required.

Category	Strategic Action	Output Desired	Suggested Agency	Instrument/Intervention
	Revamping the industrial clusters and creating CFCs.	Boosting direct exports of MSMEs in the makhana, silk and other steel product clusters.	MSME&T, WB	MSME&T, WB may organise special programmes for the MSMEs in steel and fabrication towards the direct opportunities for exports in association with EEPC, FIEO and SEFC. Also establish CFCs in consultation with the relevant industry associations/SHGs/ FPOs

	Operational issues at the Industrial Parks	Increased capacity and effective utilization of Industrial Parks for exports	State Govt	The Industrial parks in Malda may be developed into an integrated food park as it has majorly food processing units. It may house the relevant units which can help in the packing and packaging facilities, testing, cold storages etc. The State Govt may intervene with the concerned government agencies for the full utilisation of the capacity created in these parks and may encourage the industrial units undertaking product diversification. (Current scale does not support DPR under TIES)
	Foreign Post office facility in for E com Exports	Ease of E-Com exports through Dak Niryat Kendra	Postal Dept. + Customs	Mobile foreign post office visiting the district on designated days
	Establishing of Warehouse and Cold Storage facilities for food and food products.	Utilization by agricultural producers with value added services for testing, packing and packaging etc to increase	State Govt	The Warehouses may provide licensed or franchised testing and cold storage services to the other suitable products. They may also utilise packaging services through empanelled vendors.

		value added products and scaling up.		
	Handholding for direct exports of MSMEs	Increased direct exports from the state	State Govt + GoI	Use acceleration services by institutions like IIFT under suitable schemes. The State Govt. may also launch export incubation fund for supporting the Direct Exports.
	Product and district specific capacity building on exports of MSMEs	Direct exports from MSMEs to diverse markets	State Government	The existing SEFC should undertake time bound product and district specific capacity building of MSMEs in Engineering products.

15.ANNEXURE

TABLE A1: NATIONAL HORTICULTURE BOARD REGISTERED COLD STORAGES IN MALDA

S.No.	Name of the Cold Storage	Type of Cold Storage	Total Capacity	No of Chambers	Refrigerants	Other Facilities Available	Present Activity
1	Malda Cold Storage Pvt. Ltd.	Potato	5000 MT	1	Ammonia, Freon Finned Cooling Coils	Packing, Grading, Pre-Cooling,	Potato
2	Jogibhuban Cold Storage Pvt. Ltd.	Potato	3284 Mt	2	Ammonia, Freon Finned Cooling Coils	Pre-Cooling,	Multi-Purpose
3	M/S Phoenix Cold Storage	Multipurpose	2935mt.	1	Ammonia,	Packing, Grading, Drying	Runing

4	Adina Samabay Himghar	Potato	2,24000 pkt.	2	Ammonia, Freon Finned Cooling Coils		multi-purpose
5	Malda Samabay himghar ltd.	Potato	10,000 mt.	2	Ammonia, Freon Finned Cooling Coils	Pre-Cooling,	multi - Purpose

Source: [National Horticulture Board](#)

TABLE A2: AVAILABLE WAREHOUSING INFRASTRUCTURE

WHM Name	WH Name	Capacity(in MT)
Central Warehousing Corporation	Central Warehouse, Malda	18664
West Bengal State Warehousing Corporation	SWC Malda	9491

Source: [Warehousing Development and Regulatory Authority](#)

TABLE A3: CROP-WISE PRODUCTION-AREA COVERAGE-YIELD DATA FOR MALDA

SI No.	Crop	Area (Hectare)	Production (Tonnes)	Yield (Ton./Ha.)
1	Rice	195088	633851	3.25
2	Jute	27330	425497	15.57
3	Maize	51321	375929	7.33
4	Potato	10027	338281	33.74
5	Sugarcane	2271	235088	103.52
6	Rapeseed & Mustard	40978	75843	1.85
7	Wheat	19021	62474	3.28
8	Masoor	13127	16094	1.23
9	Urad	11284	10855	0.96
10	Mesta	641	8948	13.96
11	Khesari	3592	4742	1.32
12	Moong (Green Gram)	2203	3648	1.66
13	Gram	1953	2565	1.31
14	Peas & beans (Pulses)	885	951	1.07

15	Horse-Gram	1271	925	0.73
16	Groundnut	392	544	1.39
17	Sesamum	397	339	0.85
18	Arhar/Tur	72	152	2.11
19	Linseed	23	10	0.43
	Total	381876	2196736	195.56

Source: Data compiled from [Directorate of Economics and Statistics](#)

TABLE A4: MSME CLUSTERS DATA

Sr. No.	Name of Cluster	Activity of Cluster	No. of Unit/Weaver/ Artisan	No. of Emplo yees
1	Malda Bee Keeping And Honey Processing Cluster	Processing Of Honey And Honey Comb	479	4068
2	Sujapur Waste Plastic Processing Cluster	Waste Plastic Processing	36	951
3	Manikchak Carpet Cluster	Manufacturing Of Carpet And Paposh	133	398
4	Harishchandrapur Makna Cluster	Makhana Processing	21	334
5	Raniganj Pottery Cluster	Pottery, Flower Pot, Clay Doll, Clay Image	95	254
6	Steel Fabrication Cluster, Manikchak	Gate Grill, Steel Furniture, Engineering Job Work	24	148
7	Wooden Furniturecluster, Gazole	Wooden Furniture Cluster	42	135
8	Steel Fabrication Cluster, Old Malda	Gate Grill, Steel Furniture, Engineering Job Work	20	132
9	Steel Fabrication Cluster, Chanchal	Gate Grill, Steel Furniture, Engineering Job Works	21	120
10	Steel Fabrication Cluster, Kaliachak	Gate Grill, Steel Furniture, Engineering Job Work	21	117
11	Uttar Laxmipur Wooden Furniture Cluster	Wooden Furniture Cluster	42	113
12	Steel Fabrication Cluster, Ratua	Gate Grill, Steel Furniture, Engineering Job Work	20	105
13	Steel Fabrication Cluster, Gazole	Gate Grill, Steel Furniture, Engineering Job Works	22	100
14	Ratua-Ii Pottery Cluster	Pottery, Clay Model, Clay Image Etc	38	89
15	Steel Fabrication Cluster, English Bazar	Gate Grill, Steel Furniture, Engineering Job Works	17	79
16	Gobindapur Motha Mat Cluster	Motha Mat Processing	26	79
17	Ratua-Ii Wooden Furniture Cluster	Wooden Furniture And Wood Crafts	16	45

18	Parasamandi Readymade Garments Cluster	Readymade Garments	31	44
19	Bakhatuli Embroidary And Kantha Stitch Cluster	Kantha Stitch, Hand Printing, Bandhni, Butick, Butick, Dry Flower, Soft Toys Etc	26	38
20	Kotwali Sholapith Cluster	Handicraft Items From Shola	17	32
21	Sattari Handloom Cluster	Production And Sale Of Handloom Items	490	0

Source: [Directorate of MSME](#), Govt. of West Bengal

TABLE A5: DISTRICT EXPORT 24-25

ITCHS Code	Item_Desc	Sum of Value (INR Billions)
11081200	Starch Of Maize (Corn)	3.46
17039010	Molasses (Excluding Cane) Edible	1.51
07139090	Dried, Shelled Leguminous Vegetables, Whether Or Not Skinned Or Split (Excluding Peas, Chickpeas, Beans, Lentils, Broad Beans, Horse Beans And Pigeon Peas): Other Of Hdg.	0.49
40112090	Other Tyres Used On Buses/Lorries	0.41
07132020	Bengal Gram (Desi Chana)	0.37
07134000	Lentils (Mosur),Dried And Shld	0.16
10063010	Rice Parboiled	0.16
07133110	Beans Of The Spp Vigna Mungo (L.) Hepper	0.16
07031019	Other Onions Fresh Or Chilled	0.11
17023010	Glucose Liquid	0.1

Source : Data compiled from Ministry of Commerce & Industry, Govt of India

TABLE A6 : FGD REMARKS

Products	Physical Core	Physical Support	Infra	Soft Infrastructure	Others	Activities
Natural Honey	Warehouse is required	Upto date Honey Processing Machine is required for increasing production capacity. Packaging Unit is required.		Marketing Assistance is required for other destination countries. Knowledge about various schemes & Handholding is required.	Certification Agency / Testing Lab facility is required nearby	

Makhana		Latest Machinery is required for increasing production capacity. Packaging Unit is required.	Marketing Assistance is required for other destination countries. Knowledge about various schemes & Handholding is required.		
Carpet (Silk & Jute Blended)		Packaging Centre is required.	Marketing Assistance is required. Export Awareness & Handholding is required. Knowledge about finishing of the product like dyeing, cutting is required.	Related Testing Centres are required	
Mango (Raw & Byproducts)	Infrastructure like Plant & Machineries to Warehousing is required	Packaging Centre is required.	Marketing Assistance is required. Handholding for Export is required. Financial aid is required.	Related Testing Centres are required	
Horticulture Products	Cold Chain Storage & Warehousing Facility is required	Packaging Centre is required.	Research Knowledge on latest agricultural techniques for bulk production is required. Export Handholding & Marketing is required.	Related Testing Centres are required	
RMG (Mens & Womens)		Packaging Centre is required for more attractiveness.	Marketing Assistance is required. Export Awareness & Handholding is required. Knowledge about Various schemes for loans & subsidies is required.		
Handicraft Items		Packaging Centre is required for more attractiveness & durability.	Marketing Assistance is required. Export Awareness & Handholding is required. Knowledge about Various schemes for loans & subsidies is required.		