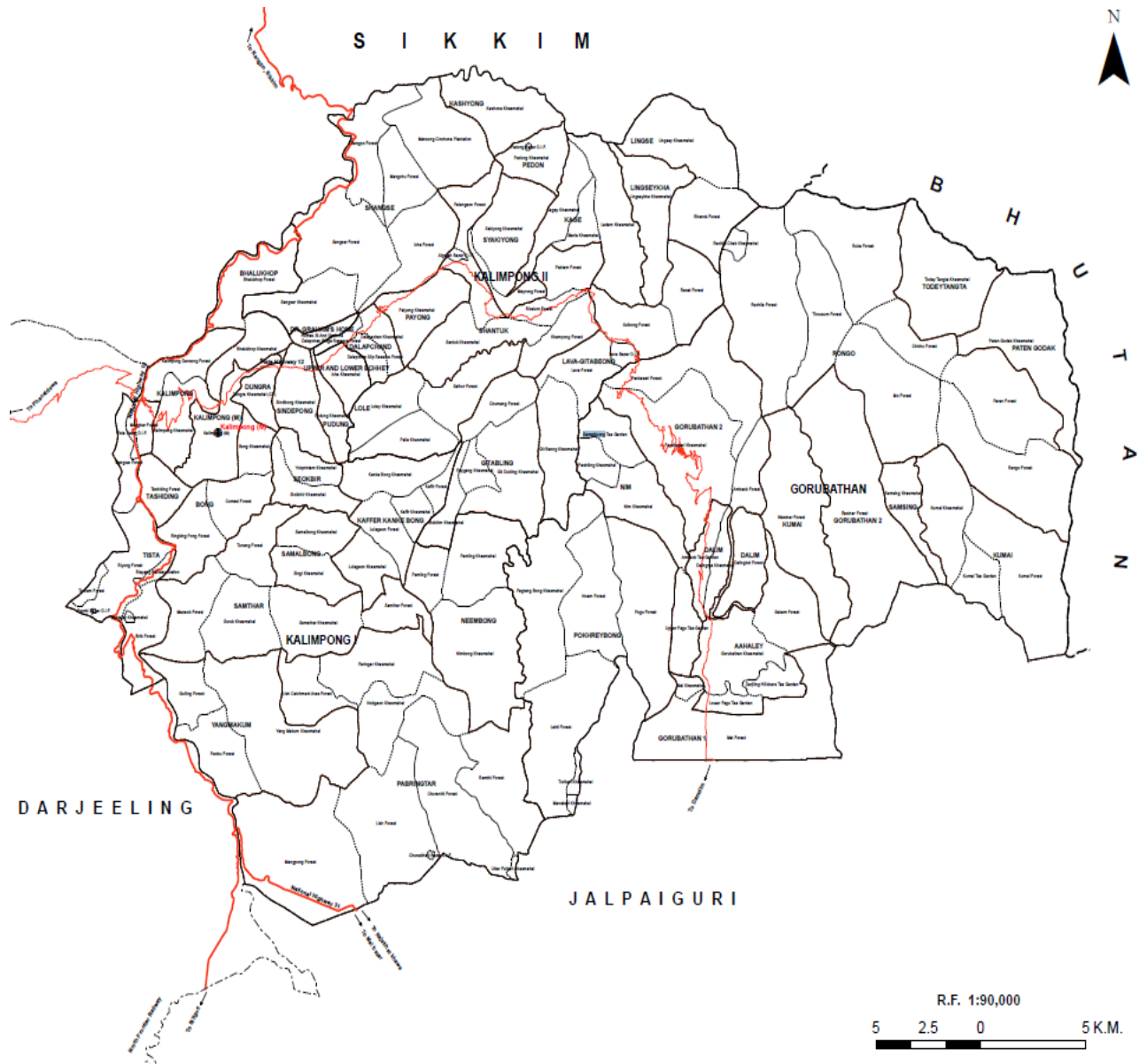


# DISTRICT PROFILE

## KALIMPONG



## 1. INTRODUCTION

The east Indian hill town of Kalimpong is situated in the Himalayan foothills of West Bengal. In accordance with K.P. Tamsang , the author of “ The Untold and Unknown Reality about the Lepchas”, the name Kalimpong comes from Kalenpong , which means, “Hillock of Assemblage”. Kalimpong was recognized as an important center for trade with Tibet, due to its closeness to Jelep La pass, which facilitated access to Central Tibet. The town was opened up by the British Govt., as an alternative to Darjeeling. Scottish Missionaries and the initial inhabitants, had contributed significantly for the development of the region, post its inception. Trade with Tibet was carried out through Kalimpong. Wool, fur, musk, food grains etc. were traded for in Kalimpong. Sudden economic prosperity of Kalimpong attracted people from other parts of the country to settle down in this part, promoting development of the region. Post the Chinese aggression in 1962, trade via Jelep La pass was closed down. Presently, Kalimpong relies on business generated by tourism, educational institutions and agriculture.

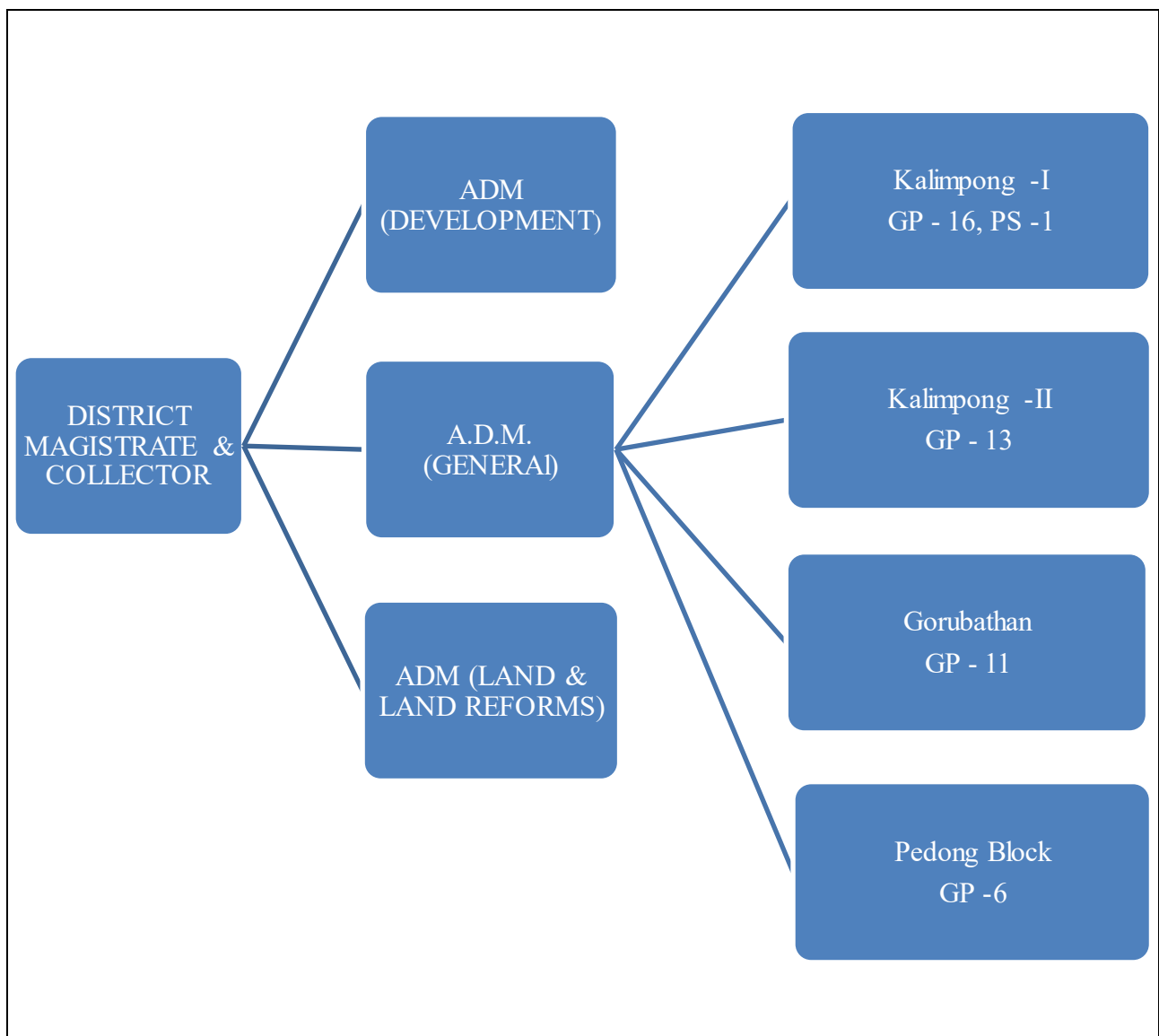
## 2. CLIMATIC CONDITIONS

Kalimpong has a mild and temperate climate. This is it’s distinct advantage over it’s neighboring towns. The maximum summer temperature is 27 o C and the minimum 16 o C. Temperatures in winter hover between a high of 17 o C and a low of 5 o C. The average annual rainfall is 220 cm.

## 3. ADMINISTRATIVE PROFILE

The district is administered by the semi-autonomous “Darjeeling Gorkha Hill Council”, set up by Govt. of West Bengal, 1988. The headquarters of the Kalimpong district is situated in Kalimpong. The district covers four development blocks namely, Kalimpong I, Kalimpong II, Gorubathan, Pedong , having 42 gram panchayets. Sub-divisional Officer(SDO) is present in the Kalimpong sub-division. There is only one police station in Kalimpong, that serves the municipality and also the gram panchyets of Kalimpong I CD Block. Kalimpong Municipality, established in 1945, takes care of the infrastructural facilities like portable water and roadways.

The distribution of the administrative order has been detailed bellow in fig 1. The details of the same are given in the annexure (Ref: Table A1, A2, A3, A4, A5 in the Annexure section)



**Fig 1: Administrative Flow of Kalimpong**

Source: Compiled from official website of Kalimpong, Govt of West Bengal

#### 4. LOCATION AND GEOGRAPHY

Kalimpong District is situated in the outer Himalayas, mostly east of the Tista River, west of Nichu & Jaldhaka Rivers, south of Sikkim & Bhutan and north of Jalpaiguri District. It lies between 26° 51' and 27° 12'N latitude and 88° 02' and 88° 53'E longitude.

## **Geology, Rock and Soil:**

The geological formation consists mostly of metamorphic rocks representing all the stages of dynamo thermal metamorphism. There is a thin layer of soil on the hill tops especially along gentle slopes. Besides, along the present river banks there are freshly deposited thin mantles of aluminum, sands and boulders, which form recent terraces.

## **Kalimpong Forest Division-**

The Kalimpong Forest Division manages a total area of **36,435.792 hectares of reserved forests**, spread across the district's hilly terrain and rich biodiversity zones. The division is responsible for the protection, conservation, and sustainable management of forest resources within its jurisdiction.

The division comprises **nine territorial ranges**, each with its own administrative headquarters for effective supervision and field management:

- **Kalimpong Range** – Headquarters at *Kalimpong*
- **Pankhasari Range** – Headquarters at *Algarah*
- **Chel Range** – Headquarters at *Chunabhati*
- **Neora Range** – Headquarters at *Gorubathan*
- **Noam Range** – Headquarters at *Manabari*
- **Samsing Range** – Headquarters at *Samsing*
- **Jaldhaka Range** – Headquarters at *Jhalong*
- **Lava Range** – Headquarters at *Lava*
- **Lolegaon Range** – Headquarters at *Lolegaon*

Each range plays a vital role in managing forest protection, wildlife conservation, and community-based forestry programs. Together, these ranges ensure the preservation of Kalimpong's unique ecological heritage and promote sustainable utilization of forest resources<sup>1</sup>.

---

<sup>1</sup> [Forest | Official Website Of Kalimpong District | India](#)

## 5. DEMOGRAPHY

Kalimpong has a very rich ethnicity and the presence of different ethnic group has made Kalimpong very rich in forming the diverse populace of the district. From the early times of the British occupation in this area the Population has grown steadily up in particular in the Kalimpong town. Administratively Kalimpong district is divided in 4 units – Kalimpong-I Block, Kalimpong-II Block & Gorubathan Block and the Kalimpong Municipality.

The demographic distribution of Kalimpong district shows a population with a sex ratio of 959 females per 1000 males, and a significant portion of the population belongs to Scheduled Tribes (29.79%) and Scheduled Castes (6.53%). The largest religious groups are Hindu (65.69%), followed by Buddhist (16.41%), and Christian (12.60%). Nepali is a predominant language, along with English and Hindi, and other languages like Lepcha, Limbu, Rai, and Tamang are also spoken. The district has a literacy rate of 73% of the total population.

The demographic distribution of Kalimpong is given by the following data:

**Table: 1 Major Demographic Distribution of Kalimpong I**

Parameters	Total	Rural	Urban
Number of Households	15358	13854	1504
Total Population (Persons)	74746	67957	6789
Total Population (Males)	37750	34474	3276
Total Population (Females)	36996	33483	3513
Literates (Persons)	54820	49376	5444
Literates (Males)	29389	26635	2754
Literates (Females)	25431	22741	2690
Total Workers (Persons)	29551	27196	2355
Total Workers (Males)	19775	18146	1629
Total Workers (Females)	9776	9050	726
Agricultural Labourers	3025	2857	168
Workers in Household Industries	217	182	35

**Table: 1 Major Demographic Distribution of Kalimpong II**

<b>Parameters</b>	<b>Total</b>	<b>Rural</b>	<b>Urban</b>
Number of Households	13172	13172	0
Total Population (Persons)	66830	66830	0
Total Population (Males)	34546	34546	0
Total Population (Females)	32284	32284	0
Literates (Persons)	47520	47520	0
Literates (Males)	26380	26380	0
Literates (Females)	21140	21140	0
Total Workers (Persons)	25229	25229	0
Total Workers (Males)	17789	17789	0
Total Workers (Females)	7440	7440	0
Agricultural Labourers	1121	1121	0
Workers in Household Industries	184	184	0

Source: Compiled from Census 2011 data

## **6. LOGISTIC INFRASTRUCTURE PROFILE**

Kalimpong's logistics infrastructure primarily relies on a network of **road transport, supported by a range of private and public courier and cargo services**. The region also has ongoing major rail infrastructure projects to enhance connectivity.

### **Transportation Networks**

- **Roadways:** Kalimpong district's roadway network primarily comprises National Highways (NH 10, NH 717A, and a section of NH 17), a State Highway (SH 12), Major District Roads (MDRs) and other local roads are managed by PWD and NHIDC. However, the mountainous terrain and high rainfall can lead to frequent landslides, which sometimes disrupt infrastructure and transport operations.

Kalimpong is primarily connected by two national highways<sup>2</sup>:

---

<sup>2</sup> Data compiled from National Highway Infrastructure Development Corporation

## **National Highway 10 (NH 10) and National Highway 717A (NH 717A).**

- ✓ **National Highway 10 (NH 10)** : This is the primary and most critical arterial road, often referred to as the "lifeline" of Kalimpong and Sikkim.
  - **Route:** It runs from the Indo-Bangladesh border at Phulbari to Gangtok, Sikkim, passing through Siliguri, Sevoke, Teesta Bazaar, and Melli in West Bengal's Kalimpong district.
  - **Significance:** It is crucial for trade, tourism, and general connectivity, but is prone to closures during the monsoon season due to frequent landslides.
  
- ✓ **National Highway 717A (NH 717A):** This new highway serves as an important alternative route, enhancing regional connectivity and national security.
  - **Route:** It starts from National Highway 17 at Bagrakote and ends in Gangtok, traversing the Kalimpong district through areas like Chuikhim, Nimbong, Loleygaon, Lava, Algarah, and Pedong.
  - **Significance:** This highway helps reduce dependency on the landslide-prone NH 10 and provides a shorter route to Sikkim via the Pakyong Airport area. The construction and maintenance of this highway is being managed by the National Highways and Infrastructure Development Corporation Limited (NHIDCL).
  
- **Railways:** Kalimpong district currently **does not have a major, functional railway station within the main town area**, nor is it connected to the broad gauge network. However, it is a key route for a strategically important railway line currently under construction.

### **Current Status and Connectivity**

- ✓ **Nearest Major Railhead:** The primary railway access point for Kalimpong is the **New Jalpaiguri Railway Station (NJP)** in Siliguri, located approximately 70–80 km away. NJP is a major junction well-connected by regular train services to most metropolitan cities across India, including Kolkata, Delhi, and Mumbai.

**Local Stations:** Smaller stations closer to the district boundaries that are part of the existing network include Sivok (SVQ), which is where the new line branches off, and Neora Naddi (NOR).

- **Air Transport:** The nearest airport connecting to the region is Bagdogra Airport (IXB) in Siliguri, which serves as a major hub for air cargo and passenger transport for the wider Darjeeling and Sikkim area

### **Logistics Services**

A variety of local, national, and international logistics and transport companies operate in Kalimpong, offering a range of services<sup>3</sup>:

- **Courier and Cargo Services:** Companies like [Gati Ltd](#), [Blue Dart Express](#), and North Eastern Carrying Transportation provide domestic and corporate courier services, bulk cargo transport, and door-to-door delivery.
- **Transporters and Packers & Movers:** Numerous local and regional transporters, such as North Bengal State Transport Corporation, Little Cub, and AMS Logistics, offer general goods transport, household relocation, and warehousing solutions.
- **Specialized Logistics:** Services for specific needs such as industrial goods transport, vehicle relocation, and managing inventory/supply chains are also available through various providers.

## **7. EXPORT INFRASTRUCTURE**

Kalimpong's existing export infrastructure primarily revolves around specialized facilities for **agro-horticultural products**, leveraging regional road, air, and sea links, rather than having dedicated large-scale international ports or customs stations within the district itself.

Kalimpong is a hill district in northern West Bengal that does not have its own Land Customs Station (LCS) or Integrated Check Post (ICP). Being an inland district, the district's trade and cross-border commerce depend on road connectivity to land ports and ICPs in neighboring districts, particularly those near the India-Nepal and India-Bhutan borders.

### **Land Custom Stations**

Exporters and importers in Kalimpong rely on LCSs located in neighboring districts for cross-border trade:

---

<sup>3</sup> Collected primary information from district FGD

- **Panitanki LCS:** Situated in Darjeeling district, Panitanki is the primary land customs station near Kalimpong for trade with Nepal. It facilitates the movement of goods such as tea, vegetables, petroleum products, cement, and jute between India and Nepal.
- **Jaigaon LCS:** Located in Alipurduar district, Jaigaon serves as a key land customs station for trade with Bhutan.
- **Other nearby LCSs:** While less directly connected, Hilli (Dakshin Dinajpur) and Fulbari (Jalpaiguri) LCSs also facilitate trade for certain goods routed through the Siliguri corridor<sup>4</sup>.

### **Integrated Check posts**

Kalimpong does not have any ICPs or direct international borders. Exporters and importers use ICPs in nearby districts to manage customs clearance and trade formalities:

- **Panitanki ICP:** Located in Darjeeling district, this is the main ICP serving Kalimpong for trade with Nepal. It provides customs, immigration, and security facilities for smooth cross-border trade.
- **Jaigaon ICP:** In Alipurduar district, this ICP handles trade with Bhutan.
- **Other ICPs in West Bengal:** Ghojadanga, Changrabandha, Fulbari, and Hilli are other ICPs serving trade with Bangladesh.

### **Cold Storages**

For most substantial cold storage requirements, Kalimpong relies on facilities in the larger, more commercially developed areas of northern West Bengal.

- **Siliguri:** As the main commercial hub for the region, Siliguri offers a much wider range of cold storage options, including large, multi-purpose facilities and those operated by logistics companies.
- **Jalpaiguri:** The neighboring Jalpaiguri district also has a number of listed cold storage facilities that serve the wider area, including Kalimpong

---

<sup>4</sup> Data compiled from Kolkata Customs and Land Port Authority of India

## Warehouse

Kalimpong has limited dedicated warehouse infrastructure, with most services focused on courier and logistics operations. The primary logistics hub for the region is the nearby city of Siliguri, which offers a wider range of warehousing options, including large-scale industrial parks and specialized storage facilities.

## Spice Board Initiative in Kalimpong

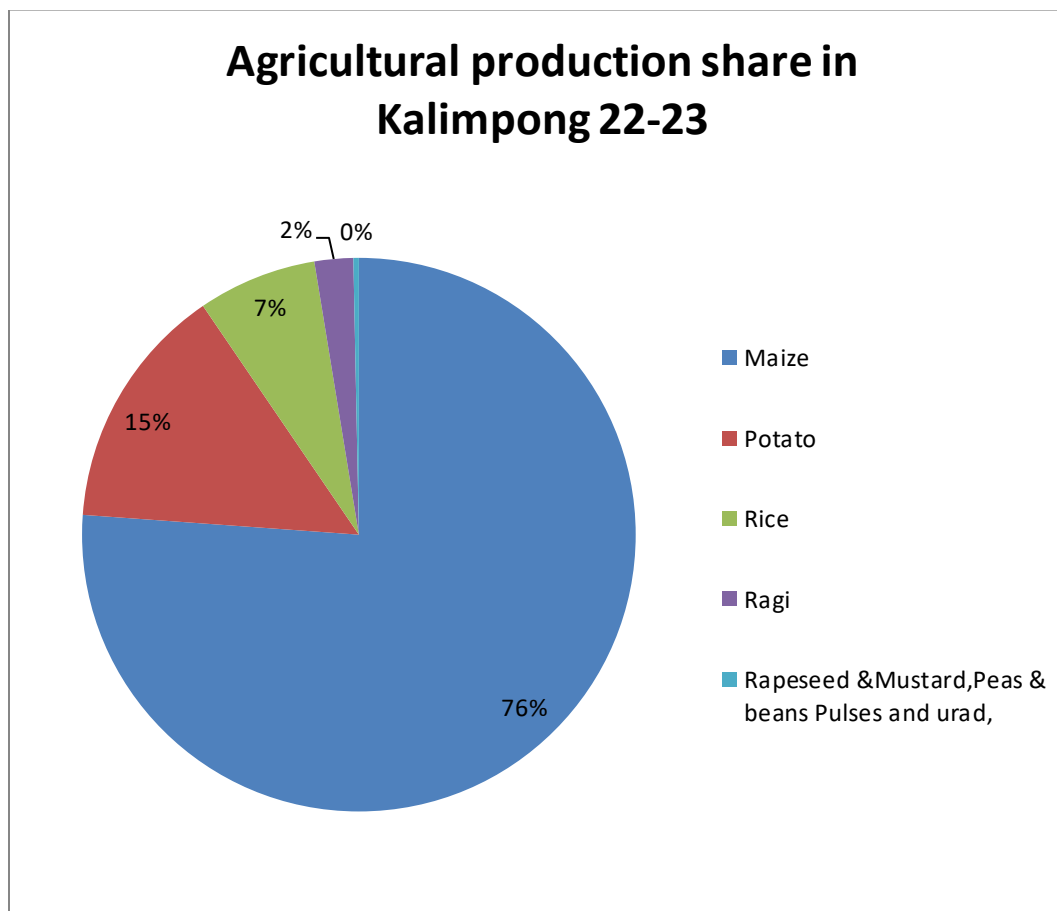
The Spices Board of India maintains a Divisional Office in Kalimpong that implements several initiatives focusing on improving the productivity, quality, and market access for large cardamom, ginger, and other spices grown in the Northeastern (NE) region. The Spices Board's activities in Kalimpong fall under the umbrella of schemes like "Sustainability in Spice Sector through Progressive, Innovative and Collaborative Interventions for Export Development (SPICED)", which provides assistance to farmers and FPOs (Farmer Producer Organizations).

## 8. AGRICULTURAL PROFILE

Agriculture plays an important role in Kalimpong's rural economy, with a variety of food and cash crops cultivated across the district. During 2022–23, the total cropped area reflected the district's agro-diversity and hilly terrain-based farming practices.

**Maize** is the principal crop of Kalimpong, occupying **14,718 hectares** with a production of **86,802 tonnes** and a yield of **5.9 tonnes per hectare**. Other important crops include **Potato (933 ha, 16,347 tonnes)** and **Rice (4,754 ha, 7,917 tonnes)**, which are grown mainly in terraced fields and valley areas. **Millets like Ragi** are also cultivated over **1,640 hectares**, producing **2,575 tonnes**, and serving as an important food grain in hilly regions. Oilseeds such as **Rapeseed and Mustard (207 ha, 289 tonnes)** and pulses like **Peas, Beans (59 ha, 67 tonnes)** and **Urad (11 ha, 7 tonnes)** are grown in smaller areas, contributing to crop diversity and nutritional balance.

Kalimpong's agriculture is characterized by mixed farming, where cereals, vegetables, and horticultural crops are grown side by side, reflecting the region's adaptability to its unique agro-climatic conditions (Refer Table A7 in the Annexure)



**Fig 2: Agricultural Production Share in Kalimpong**

Source: [Directorate of Economics & Statistics](#)

### Horticulture Profile of the District

Kalimpong is a prominent horticultural district in West Bengal, known for its diverse production of fruits, vegetables, flowers, and spices. The district grows major vegetables like Cabbage, Brinjal, Cauliflower, and Peas, and fruits such as Mandarin Orange, Banana, and Temperate Fruits. Floriculture is also significant, with Gladiolus, Rose, Chrysanthemum, and Marigold widely cultivated. The favorable climate, fertile soil, and skilled farmers make Kalimpong a key center for horticulture, supporting livelihoods and local economy.

#### ✓ **Vegetables Production:**

Kalimpong is one of the major vegetable-growing districts in North Bengal, where vegetable cultivation plays a vital role in sustaining the livelihood of local farmers and strengthening the

rural economy. In 2023–24, the district covered a total area of **15.082 thousand hectares** under vegetable cultivation, producing around **145.73 thousand metric tonnes** of vegetables.

Among the major crops, **Cabbage (19.86 thousand MT)** and **Brinjal (15.60 thousand MT)** are the leading vegetables both in terms of area and production. Other important vegetables include **Cauliflower (14.00 thousand MT)**, **Other Cucurbits (13.01 thousand MT)**, **Cucumber (7.80 thousand MT)**, and **Tomato (7.35 thousand MT)**, which are cultivated extensively in different parts of the district. Root vegetables such as **Radish (6.70 thousand MT)** and **Carrot (6.60 thousand MT)** are grown widely in the cooler regions, while **Peas (6.50 thousand MT)** and **Pumpkin (6.28 thousand MT)** add to the district’s production diversity. Spices and fruit vegetables like **Green Chili (5.75 thousand MT)**, **Ladies Finger (4.39 thousand MT)**, and **Onion (3.76 thousand MT)** also hold an important place in local cropping patterns.

In addition to these, smaller quantities of **Pointed Gourd, Beans, Bottle Gourd, Arum, Capsicum, Sweet Potato, and Elephant Foot Yam** are cultivated, showcasing Kalimpong’s wide range of vegetable varieties suited to its hilly agro-climatic conditions.

The favorable weather, fertile soil, and year-round water availability have made Kalimpong a prominent center for vegetable production in the region. The district supplies vegetables not only to local markets but also to nearby plains and neighboring states, contributing significantly to the agricultural economy and ensuring food security for the region(Refer Table A8 in the Annexure).

#### ✓ **Fruit Production:**

Kalimpong has a rich and diverse fruit cultivation sector, spanning a total area of **4.179 thousand hectares** and producing **52.83 thousand metric tonnes** of fruits in 2023–24. The district’s favorable hilly climate and fertile soils support both temperate and tropical fruits.

**Temperate fruits** are the largest contributors, with **22.90 thousand MT** produced from **1.34 thousand hectares**. **Mandarin Orange** is the leading fruit crop, yielding **17.55 thousand MT** from **1.75 thousand hectares** and forming a key part of the local economy. Other significant fruits include **Banana (6.02 thousand MT)**, **Other Citrus (1.40 thousand MT)**, **Jackfruit (1.30 thousand MT)**, and miscellaneous fruits totaling **1.27 thousand MT**.

Smaller quantities of fruits such as **Papaya, Guava, Pineapple, Litchi, Mango, Passion Fruit, Kiwi, Dragon Fruit, Avocado, and Strawberry** are also grown, contributing to the district's fruit diversity and market potential.

The combination of tropical and temperate fruits makes Kalimpong a prominent fruit-growing region in West Bengal, supporting local livelihoods, nutritional security, and opportunities for processing and value-added horticultural products(Refer Table A9 in the Annexure).

#### ✓ **Flower Production:**

Kalimpong is one of the leading districts in West Bengal known for its thriving floriculture sector. In 2023–24, the district recorded a total flower cultivation area of **0.909 thousand hectares**, producing **11.50 crore cut flowers** and **0.453 thousand metric tonnes of loose flowers**.

Among the cut flowers, **Gladiolus** holds the largest share with **9.55 crore sticks** produced from **0.670 thousand hectares**, followed by **Chrysanthemum (0.80 crore sticks)** and **Rose (0.79 crore sticks)**. The district also produces **Anthurium, Gerbera, Orchid, Tuberose**, and other seasonal flowers in smaller quantities, which add to its floral variety and market value.

On the other hand, **Marigold** dominates the loose flower category, contributing **0.30 thousand MT**, while other varieties like **Anthurium, Jasmine, and miscellaneous seasonal flowers** are also cultivated.

Due to its favorable climatic conditions, fertile soil, and skilled growers, Kalimpong has developed into a major floriculture hub in the region. The district not only meets domestic demand but also supports export-oriented flower production, contributing significantly to the local economy and employment generation(Refer Table A10 in the Annexure).

#### ✓ **Spices Production:**

Kalimpong is a notable spice-growing district of West Bengal, with **3.713 thousand hectares** under spice cultivation and a total production of **27.266 thousand MT** in 2023–24. Ginger is the dominant crop, contributing the bulk of the output at **25.89 thousand MT**, while large cardamom occupies the largest area among spices. Other spices such as garlic, turmeric, coriander, red pepper, fenugreek, bay leaves, fennel, and black pepper are also grown in smaller quantities, adding

diversity to the district's agriculture. Overall, Kalimpong's climate and terrain make it well-suited for a rich variety of spice crops that support local livelihoods and the horticultural economy (Refer Table A11 in the Annexure)<sup>5</sup>.

## 9. INDUSTRIAL SCENARIO OF KALIMPONG DISTRICT:

The industrial scenario of Kalimpong district is primarily characterized by **agro-based industries, tourism, and cottage industries**, leveraging its natural resources and hilly terrain. It is not a hub for heavy industries but rather focuses on small-scale and nature-dependent economic activities.

- **MSME Cluster:**

Kalimpong hosts a variety of MSME clusters across agro-processing, handicrafts, and floriculture, providing employment opportunities and promoting local entrepreneurship.

**Agro-Processing:** The district has several agro-based clusters, including **Todey Tangta Jaldhaka Agro Processing Industrial Co-operative Society Ltd** for large cardamom processing (43 units, 120 employees), **Lingse Lingsekha Co-operative Society** for broom making (23 units, 48 employees), and **Unggeek Agro Processing Cluster** (15 units, 60 employees). These clusters focus on processing local agricultural produce and adding value for market consumption.

**Horticulture & Floriculture:** Kalimpong's floriculture sector is supported by clusters like the **Kalimpong Floriculture Cluster** (15 units, 2000 employees) and **Sakyong Floriculture Agro Processing Cluster** (22 units, 120 employees), which enhance flower production, post-harvest handling, and marketing. The **Kalimpong Horticulture Society Bee Project** focuses on honey processing, operating 1009 units and employing an equal number of people under the Khadi sector.

**Handicrafts & Metal Crafts:** Traditional crafts are promoted through the **Kalimpong Metal Craft Cluster** (15 units, 2000 employees) and **Kalimpong Dhup Batti Cluster** (15 units, 35

---

<sup>5</sup> Data compiled from the Report from the Directorate of Horticulture, Department of FPI & H, Government of West Bengal.

employees), supporting local artisans in producing incense sticks and metal crafts for domestic and export markets.

These MSME clusters play a crucial role in promoting local skills, generating employment, and contributing to Kalimpong's overall economic development (Refer Table A 11 in the annexure).

### **Farmers Producers Organizations (FPOs) in Kalimpong**

There are several Farmers' Producer Organizations (FPOs) operating in Kalimpong district, primarily focused on horticulture, spices, and floriculture, reflecting the region's agricultural specializations. However, their success is often dependent on strong institutional support and access to markets.

#### **Some Prominent FPOs in Kalimpong**

- **Kalimpong Organic Farmers Company Ltd.:** Listed in the Directory of Farmer Producer Companies of West Bengal, this FPO is focused on promoting organic farming practices in the region.
- **Kalimpong Krishak Kalyan Sangathan Producer Company Limited:** This organization is involved in various agricultural activities.
- **Hill Fresh Farmers Producer Company Limited :** Incorporated in 2023, this FPO is another initiative supporting local farmers in the Kalimpong area.
- **Gitabling Cardamom Producer Group:** A notable Self-Help Group (SHG) functioning as a producer group, this organization has been recognized for its work in increasing the income of cardamom farmers in the Gitabling area. In one year alone, the 30-member group sold cardamom worth ₹45 lakh<sup>6</sup>.

## **10.BANKING SECTOR:**

The banking needs for various activities in the district are met by a network of 14 commercial banks with 24 branches (including five private banks), 6 branches of Uttar Banga Kshetriya

---

<sup>6</sup> Data compiled from West Bengal State Agricultural Marketing Board and Kalimpong PLP Report of 2023-24

Gramin Bank (UBKGB), 4 branches of Darjeeling District Central Cooperative Bank Ltd (DDCCB), and 1 branch of WBSCARDB (Refer Table A12 in the Annexure).

## 11. ODOP SECTOR OF THE DISTRICT

Kalimpong is famous for its **ornamental flowers**, particularly orchids and gladioli, and various handicrafts like **Tibetan thangkas** and **woolen items**. Other well-known products include local agricultural goods such as **ginger, cardamom, and oranges**, along with unique local foods like **condensed milk lollipops** and **chhurpi**. Darjeeling Tea which is a GI product of Darjeeling is also grown here in Kalimpong district.

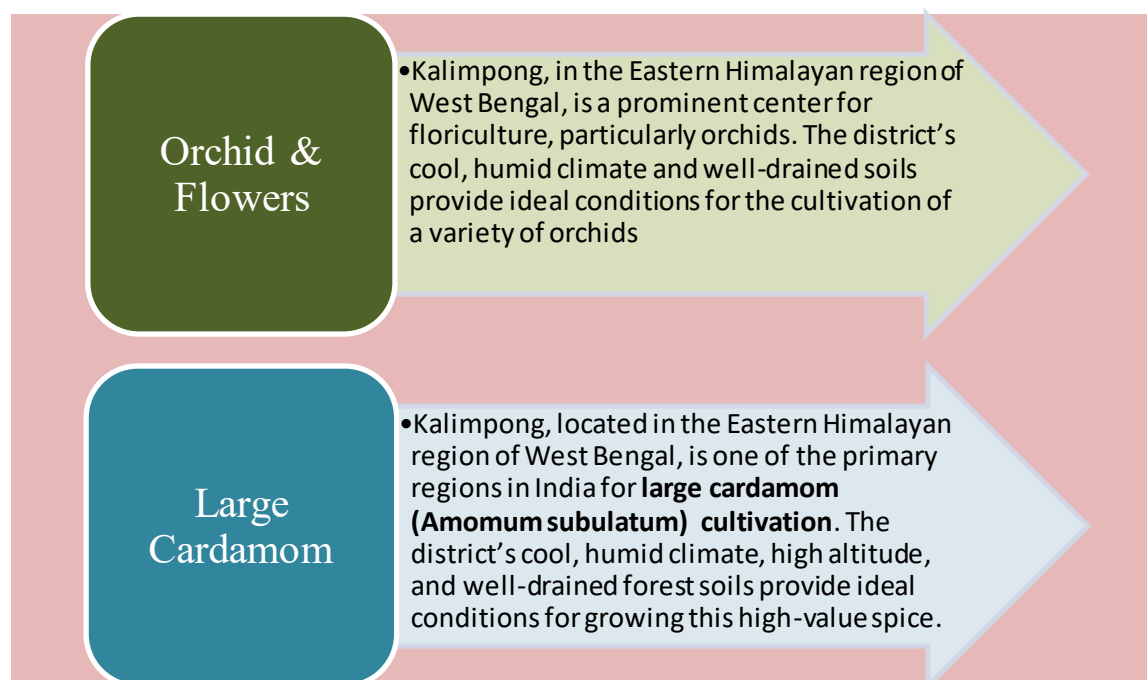
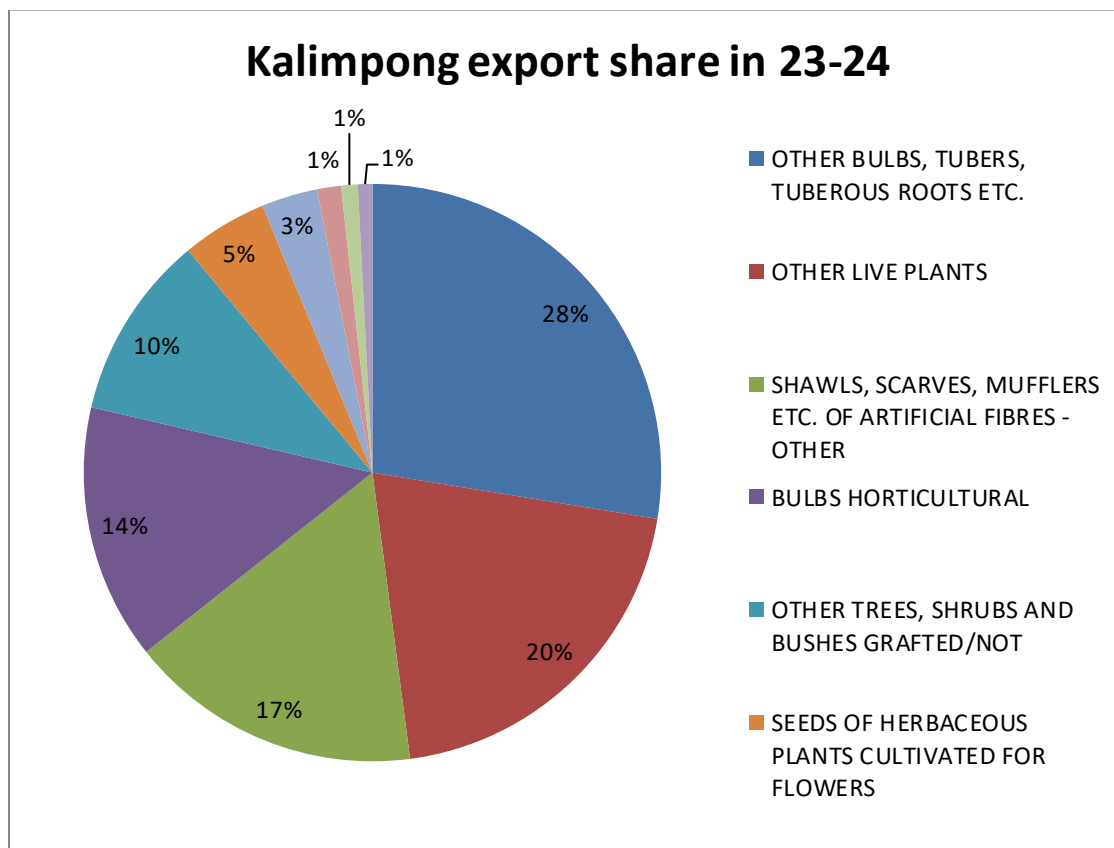


Fig 3: ODOP details of the district

## 12. EXPORT PROSPECTS AND POTENTIALITY OF THE DISTRICT

Kalimpong district's export scenario is primarily centered on its strong agro-horticulture sector and traditional handicrafts. Key export potential commodities include **tea, emerging coffee, spices (especially large cardamom and ginger), floriculture products**, and various **traditional crafts and metalware**.



**Fig 4 : Sector Contribution in KalimpongExports**

Source : Data compiled from the Dashboard of Ministry of Commerce & Industry, Govt of India

From the above fig 4, we can see that Kalimpong’s exports are primarily **horticulture-driven**, with significant contributions from **textile handicrafts** and **seed production**. The district’s unique climatic conditions, traditional craftsmanship, and nursery infrastructure collectively strengthen its position as a growing hub for **floriculture and plant-based exports**.

### **Horticulture and Floriculture Products (77.35%)**

Kalimpong’s export portfolio is largely dominated by horticultural and floricultural items such as **bulbs, tubers, live plants, grafted trees, shrubs, and flower seeds**. The district’s favorable agro-climatic conditions and well-developed nursery industry make it a leading supplier of ornamental and planting materials. Key export items include other bulbs and tuberous roots (27.56%), live plants (20.35%), horticultural bulbs (14.30%), and grafted/non-grafted trees and shrubs (10.34%). This category reflects the district’s strong base in floriculture and nursery production.

### **Textile and Handicraft Products (17.57%)**

Textile-based exports, particularly **shawls, scarves, mufflers, and blended fabrics**, form the second major category. Shawls, scarves, and mufflers of artificial fibres contribute 16.42%, showcasing Kalimpong's traditional weaving and craft skills. Smaller shares come from wool and fine animal fibre fabrics (1.34%) and polyester-viscose dyed fabrics (0.81%), representing emerging small-scale textile activities in the region.

### **Agricultural Seeds (5.87%)**

The district also exports a range of **agricultural and flower seeds**, including seeds of herbaceous plants (4.80%), sunflower seeds (3.14%), and other seeds for planting (0.93%). These items cater to domestic and international agricultural markets, emphasizing Kalimpong's potential in seed production and distribution.

Kalimpong's exports are primarily **horticulture-driven**, with significant contributions from **textile handicrafts** and **seed production**. The district's unique climatic conditions, traditional craftsmanship, and nursery infrastructure collectively strengthen its position as a growing hub for **floriculture and plant-based exports**(Refer Table A 14 in the annexure).

Comparing the India's export trend of the product basket of Kampong between 2020 and 2024, it has been seen that India's export scenario reflected a combination of strong growth in select sectors and minor setbacks in others. The period marked significant progress in agricultural, floricultural, and textile-based exports, indicating a diversified and resilient export structure.

The **highest export growth** was recorded in **Horticultural Bulbs (HS 6012010)**, which surged by **808.33%**, followed by **Other Sunflower Seeds (HS 12060090)** with an impressive **541.11%** increase. **Other Trees, Shrubs, and Bushes (HS 6022090)** and **Seeds of Herbaceous Plants for Flowers (HS 12093000)** also registered notable growth rates of **122.40%** and **109.65%**, respectively. These trends highlight India's growing strength in the global **horticulture and floriculture** markets.

The **textile sector** also maintained positive momentum. **Polyester Mixed with Viscose Rayon Fabrics (HS 55151130)** recorded a **91.76%** increase, while **Woven Wool Fabrics (HS 51121990)** rose by **83.12%**, driven by consistent international demand and improved manufacturing competitiveness.

However, some product categories witnessed a decline. **Other Bulbs, Tubers and Roots (HS 6012090)** saw a **-43.08%** fall, and **Shawls, Scarves and Mufflers of Artificial Fibres (HS 62144090)** declined by **-28.26%**, indicating changing consumer preferences and market shifts.

Overall, India's exports during 2020–2024 demonstrate **diversified growth**, led by strong performance in **agriculture, seeds, and textiles**, while maintaining resilience against sectoral fluctuations in the global market.

Source: Trade Map

**Table 2 : Export Potentiality Analysis of Kalimpong.**

Export Status	HS Code	Product Details	Exported value in 2020	Exported value in 2021	Exported value in 2022	Exported value in 2023	Exported value in 2024	Export growth of India in five years (in %)	World Import Growth of the sector @ 6 digit in five years (in %)	Top five importers of India	Top ten importer of the sector @ 6 digit in world market	India's rank in world exporter list of the sector
Currently exporting from the district	6012090	Other Blbs., Tubrs, Tubrus Roots Etc.	564	348	257	260	321	-43.08	-3	USA, Netherlands, Japan, UAE, Maldives	Germany, Switzerland, France, Italy, USA, Austria, Belgium, Poland, Sweden, Romania	21
	6029090	Other Live Plants	22,742	27,942	25,546	27,446	30,097	32.34	2	Netherlands, USA, UAE, Italy, Kenya	Germany, UK, USA, Netherlands, France, Italy, Austria, Poland, Belgium, Switzerland	20
	62144090	Shwls Scrvs, Mufflrs Etc Of Artificial Fbrs - Other	0	0	0	8,392	6,020	-28.26*	-5	Germany, Netherlands, France, UAE, UK	Germany, France, USA, ITALY, Spain, Austria, Netherlands, UK, Poland, Switzerland	5
	6012010	Bulbs Horticultural	0	12	0	6	109	808.33**	-3	USA, Netherlands, Japan, UAE, Maldives	Germany, Switzerland, France, Italy, USA, Austria, Belgium, Poland, Sweden, Romania	21
	6022090	Other Trees, Shrbs And Bush Grftd/Not	384	195	1,341	555	854	122.40	1	Bhutan, Côte d'Ivoire, Maldives, Kenya, UAE	Morocco, Italy, France, USA, UK, Germany, Mexico, Canada, Belgium, Switzerland	
	12093000	Seeds Of Herbaceous Plnts Cultvtd For Flwrs	2,144	2,781	3,225	3,973	4,495	109.65	1	USA, Netherlands, Thailand, Germany, Poland	Netherlands, USA, China, Germany, Japan, India, UK, Canada, Italy, France	14

12060090	Other Sunflower Seeds W/N Broken	180	402	1,048	1,450	1,154	541.11	1	Tanzania, United Republic of, Kenya, Philippines, USA, UAE	Bulgaria, Netherlands, Romania, Russian Federation, Spain, Germany, France, Ukraine, Turkiye	28
51121990	Others Wovn Fbrcs Contng>=85% By Wt Of Comb Wool/Fine Anml Of Wt Excding 200 G/M2	1,072	2,817	2,267	2,606	1,963	83.12	9	China, Hong Kong, China, Russian Federation, Kenya, UK	China, Italy, Morocco, USA, France, Korea, Republic of, Viet Nam, UAE, Germany	20
12099990	Other Seeds Etc For Planting N.E.S	10,265	12,310	11,122	12,675	12,644	20.25	1	USA, Malaysia, Kenya, Tanzania, United Republic of, Thailand	Mexico, China, Spain, Netherlands , Egypt, Germany , Denmark, India, Australia, USA	5
55151130	Fbrc Of Polstr,Mxd With Viscos Ryon,Dyed	151,576	186,452	243,693	293,131	290,659	91.76	14	UAE, Afghanistan, Egypt, Sri Lanka, Viet Nam	Viet Nam, UAE, Kyrgyzstan, Afghanistan, Saudi Arabia, Spain , Egypt, Indonesia, Italy, Russian Federation	

\* The calculation has been done using the data for 2023 & 2024.

\*\* The calculation has been done using the data for 2021, 2023 & 2024.

Source : Date compiled from Trade Map

## 13.SWOT ANALYSIS

Studying and examining the different aspects of the district and collecting data from the primary and secondary sources and the focus group discussions conducted in the district, the SWOT Analysis of the district in terms of export development has been depicted below

<p><b>STRENGTHS</b></p> <ul style="list-style-type: none"> <li>• Hilly district with flora and fauna</li> <li>• Two NH pass through the district.</li> <li>• Existence of horticulture and floriculture parks and FPOs</li> <li>• Diverse specialization in horticulture and floriculture products for value additions.</li> <li>• Presence of industrial units for agro, horticulture and floriculture products.</li> <li>• Focus on unique products like orchid flowers and large cardamom.</li> <li>• Production of seeds of Herbaceous plants, shrubs horticultural bulbs.</li> <li>• Production of shawls, scarves, mufflers and textile handicrafts.</li> </ul>	<p><b>WEAKNESSES</b></p> <ul style="list-style-type: none"> <li>• Lack of rail or air connectivity in the district.</li> <li>• Hilly region prone to landslides</li> <li>• Lack of export infrastructure and robust CFCs in the clusters</li> <li>• Requirement of focused Export Facilitation and International Marketing Assistance, suitable for the district.</li> <li>• Lack of support for R&amp;D, Quality Certifications related to agricultural, horticultural and floriculture products.</li> </ul>
<p><b>OPPORTUNITIES</b></p> <ul style="list-style-type: none"> <li>• Massively growing international market for Indian suppliers in agricultural, horticultural and floricultural products.</li> <li>• E-commerce exports are gaining momentum</li> <li>• Supportive schemes of both the Central and State Governments for exports</li> <li>• Growing tourism industry.</li> <li>• Emerging new technologies in the food processing sector.</li> </ul>	<p><b>THREATS</b></p> <ul style="list-style-type: none"> <li>• Disadvantages of hilly region.</li> <li>• Lack of facilities in the clusters leading to migration of value addition to other districts/states.</li> <li>• Stricter environmental and food safety requirements in international markets.</li> <li>• Emergence of ESG requirements and other non-tariff barriers in international markets</li> </ul>

## 14.EXPORT CHALLENGES OF THE DISTRICT

Kalim pong district is a centre for horticulture, floriculture and agriculture products apart from a tourist destination. Maize is the principle agricultural produce of the district. However, the major contributions for exports from the district is accounted by horticulture and floriculture products (77%). This is followed by textile and handicraft products (18%) and agricultural products (5%). The exports are majorly done by the FPOs and small farmers and traders in and outside the district. Logistical issues of the district is a major constraint as it depends only on road transport. The major export challenge for the FPOs, SHGs and MSMEs in the district is entrepreneurship for exports. Some of the potential products like large cardamom, cut flowers, herbal ingredients and other handloom and handicraft products are still not explored properly for international markets.

### **Infrastructure and logistics**

- The district has 10 clusters most of them are functioning as industrial cooperatives representing diverse products like large cardamom processing, honey, floriculture, dhoop bhati , broom making etc. The clusters lack scale and CFCs.
- Transport: Two national highways cross this district connecting Sikkim and Jalpaiguri. There is no other transport modes available in the district.

### **Market access and finance**

- Difficulty reaching export markets: Farmers/SHGs/FPOs, particularly in food processing, horticulture and floriculture sectors function as captive units for traders and bigger firms and face difficulties in accessing international markets due to lack of awareness which not only denies direct export but also fetches low price. The food product and other cluster exports from the district is carried out majorly by traders.
- Limited access to formal credit: Financing challenges, such as high initial investment costs and logistics costs are significant barriers for many small farmers and FPOs. Most of the MSMEs avail trade and supplies credit as provided by the buyers of bigger units.
- Weak export strategy: Though government initiatives exist to boost exports, there are gaps in the district-level execution of a robust strategy for products with high export potential mainly for product diversification.

- There is no specific strategy for promoting tourism in the district.
- The SEFC should make specific interventions to implement the district level initiatives.

### **Operational and Environmental challenges**

- Climate change impacts: As the district is in hilly region and highly dependent on agriculture and horticultural products, it is subjected to the high risk of landslides and climate change.
- Irregular rainfall, frequent floods, and climate changes pose significant risks to both agriculture, horticulture and food processing sectors. Unpredictable weather directly disrupts agriculture and horticulture yields.
- Lack of modern technology: The logistics movements for the district lacks utilisation of modern technology. The MSME units being captive suppliers are devoid of pressure for innovation and lack modern machinery and technological knowledge to improve productivity and innovative products.

## **15.GIST OF THE ANALYSIS**

The following are the salient points which emerge from the above discussions:

- The major export of the district is contributed by Horticulture and floriculture products which accounts for around 77% of the total exports as reported in the year 2024-25, followed by 18 % of Textile and Handicraft products and 5% of Agricultural seeds.
- Opportunities for value added exports of horticulture, floriculture and food processing products are high.
- Several units located in the clusters are majorly acting as feeder units for traders and also lack scale.

## **16.EXPORT ACTION PLAN SUGGESTED**

Based on the above facts, analysis of the data and the input from the stakeholders, the following action plan is suggested. The action plan also indicates the desired output of the strategic actions, the responsible agency and the proposed intervention/tool for implementation. It has also been highlighted the activity/activities where a DPR may be required.

<b>Strategic Action</b>	<b>Output Desired</b>	<b>Suggested Agency</b>	<b>Instrument/Intervention</b>
Revamping the industrial clusters and creating CFCs.	Boosting direct exports of MSMEs in the horticultural, floricultural and other agro product clusters.	MSME&T, WB	MSME&T, WB may organise special programmes for the MSMEs in horticulture and floriculture towards the direct opportunities for exports in association with APEDA, FIEO and SEFC. Also establish CFCs in consultation with the relevant SHGs/ FPOs.
Foreign Post office facility in for E com Exports	Ease of E-Com exports through Dak Niryat Kendra	Postal Dept. + Customs	Mobile foreign post office visiting the district on designated days
Handholding for direct exports of MSMEs	Increased direct exports from the state	State Govt + GoI	Use acceleration services by institutions like IIFT under suitable schemes. The State Govt. may also launch export incubation fund for supporting the Direct Exports.
Product and district specific capacity building on exports of MSMEs	Direct exports from MSMEs to diverse markets	State Government	The existing SEFC should undertake time bound product and district specific capacity building of farmers and FPOs in horticultural, floriculture and agricultural products.

## 17.ANNEXURES

**Table A1:** Details of the District Administrator

### District Magistrate and Collector

Name	Designation	Email	Phone
Shri Balasubramanian T, IAS	District Magistrate	dm[dot]kpg- wb[at]gov[dot]in	03552-255009

**Table A 2: Details of the Additional District Magistrate**

Name	Designation
Shri Samiran Mandal WBCS(Exe.)	ADM (General)
Shri Shekhar Kumar Chaudhary, IAS	ADM (LR)
Shri Sudipta Das, WBCS(EXE)	ADM(DEVELOPMENT)

**Table A 3: District Level Officers**

Name	Designation	Email
Shri Pritam Limboo, WBCS(EXE)	Spl. L.A.O	dplokalingpong2017[at]gmail[dot]com
Shri Abner Bhutia, WBCS(EXE)	RTO	rtokalingpong2020[at]gmail[dot]com
Shri Siddharth Subba, WBCS(EXE)	PO cum DWO, District Officer, SHG & SE	shgsekalingpong[at]gmail[dot]com
Shri Tashi Thandup Bhutia, WBCS (EXE)	DPLO	
Shri Kesang Dhendup Bhutia, WBCS (EXE)	DM & DC	
Smt Tashi Doma Sherpa (WBCS EXE)	DOMA	
Shri Pema Sherpa, WBCS (Exe.)	DPRDO	
Shri Maghphone Dhendup Lama, WBCS(EXE)	District Manager	
Smt. Darshana Subba WBCS(EXE)	DM & DC	
Shri Bhaskar Biswas WBCS (EXE)	DM & DC (on Prob)	

**Table A 4 :Sub - Divisional Officers**

Name	Designation	Email
Suman Mazumder, WBCS(EXE)	SDO Kalimpong	sdokalimpong[at]gmail[dot]com

**Table A 5: Block Development Officers**

Name	Designation
Sovan Das, WBCS(Exe)	BDO Gorubathan
Chewang Tamang, WBCS (Exe)	BDO Pedong
Bharti Chik Baraik, WBCS(Exe)	BDO LAVA
Samirul Islam, WBCS(Exe)	BDO Kalimpong

Source: <https://kalimpong.gov.in>

**Table A 6: ROAD**

Sl.	Category Name	Road Name	Length (in Km)
1	VR	12th mile to Nimbong Fatak Road	32.1
2	Major District Road	Alternative Road	9
3	Other District Road	East Main Road	4.2
4	Major District Road	Kalimpong Bye Pass	15.8
5	Major District Road	Link road from Upper Rishi to Alternative Road	1.4
6	State Highway	Lower Rishi Road	15
7	Major District Road	Reang Approach Road	0.6
8	VR	Relli to Deorali Road	13.55
9	Other District Road	Ringkingpong Road	3.1
10	Major District Road	Teesta Valley Road	2
11	Other District Road	Upper Cart Road	3.9
12	VR	Upper Dalapchand Road via Bhutia Monastery, Bhutia Gaon	0.92

Sl.	Category Name	Road Name	Length (in Km)
13	State Highway	Upper Rishi Road	15
14	Other District Road	West Ricksaw Road	2.6

Source: <https://pwd.wb.gov.in/roads>

## Agricultural Production Data

**TABLE A 7 : MAJOR CROPS OF KALIMPONG (2022-23)**

Sl. No.	State/Crop/District	Area (Hectare)	Yield (Ton./Ha.)	Production (Tonnes)
1.	Maize	14718	5.9	86802
2.	Potato	933	17.52	16347
3.	Rice	4754	1.67	7917
4.	Ragi	1640	1.57	2575
5.	Rapeseed & Mustard	207	1.4	289
6.	Peas & beans Pulses	59	1.14	67
7.	Urad	11	0.64	7

Source: [Directorate of Economics & Statistics](#)

<https://data.desagri.gov.in/website/crops-apy-report-web>

## Vegetables:

**TABLE A 8 : VEGETABLES PRODUCTION OF KALIMPONG**

Name	Area in (Thousand ha)	Production (2023-24)	Unit
Cabbage	0.692	19.860	Thousand MT
Brinjal	0.715	15.600	

<b>Other Vegetables</b>	4.200	14.050
<b>Cauliflower</b>	0.540	14.000
<b>Other Cucurbits</b>	1.270	13.010
<b>Cucumber</b>	0.650	7.800
<b>Tomato</b>	0.500	7.350
<b>Radish</b>	0.440	6.700
<b>Carrot</b>	0.450	6.600
<b>Peas</b>	1.280	6.500
<b>Pumpkin</b>	0.380	6.280
<b>Green Chili</b>	1.880	5.750
<b>Ladies Finger</b>	0.402	4.390
<b>Onion</b>	0.173	3.760
<b>Pointed Gourd</b>	0.330	3.420
<b>Beans</b>	0.560	3.320
<b>Bottle gourd</b>	0.390	3.200
<b>Arum</b>	0.109	2.050
<b>Capsicum</b>	0.060	1.350
<b>Sweet Potato</b>	0.041	0.440
<b>Elephants Foot Yam</b>	0.020	0.300
<b>All Vegetables</b>	15.082	145.730

Source: “[Report from the Directorate of Horticulture Dept. of FPI & H, Govt. of W.B.](#)”

**Fruits:**

---

**TABLE A 9 : FRUIT PRODUCTION OF KALIMPONG**

---

<b>Name</b>	<b>Area in (Thousand ha)</b>	<b>Production (2023-24)</b>	<b>Unit</b>
<b>Temperate Fruits</b>	1.340	22.900	Thousand MT
<b>Mandarin Orange</b>	1.750	17.550	
<b>Banana</b>	0.370	6.020	
<b>Other Citrus</b>	0.150	1.400	
<b>Jackfruit</b>	0.090	1.300	
<b>Misc. Fruits</b>	0.120	1.270	
<b>Papaya</b>	0.044	0.800	
<b>Guava</b>	0.075	0.800	
<b>Pineapple</b>	0.020	0.250	
<b>Lichi</b>	0.025	0.166	
<b>Mango</b>	0.040	0.160	
<b>Passion Fruit</b>	0.002	0.090	
<b>Kiwi</b>	0.070	0.082	
<b>Dragon</b>	0.010	0.030	
<b>Avocado</b>	0.070	0.009	
<b>Strawberry</b>	0.003	0.004	
<b>All Fruits</b>	4.179	52.831	

Source: “[Report from the Directorate of Horticulture Dept. of FPI & H, Govt. of W.B.](#)”

**Flowers:**

**TABLE A 10: FLOWER PRODUCTION OF KALIMPONG**

<b>Name</b>	<b>Area in (Thousand ha)</b>	<b>Production (2023-24)</b>	<b>Unit</b>
Total Cut Flower	0.745	11.500	(Cr. Cut Flowers)
Gladiolus	0.670	9.550	Crore Sticks
Chrysanthemum	0.042	0.800	Crore Sticks
Rose	0.025	0.790	Crore Sticks
Total Loose Flower	0.164	0.453	Thousand MT
Marigold	0.050	0.300	Thousand MT
Anthurium	0.002	0.200	
Seasonal Flowers	0.60	0.088	
Gerbera	0.002	0.085	
Misc. Flowers	0.050	0.060	
Tuberose	0.002	0.033	Crore Sticks
Orchid	0.002	0.042	
Jasmine	0.040	0.005	
All Flowers	0.909	0.453 (Th. MT) & 11.500 (Cr. Cut Flowers)	

Source: [“Report from the Directorate of Horticulture Dept. of FPI & H, Govt. of W.B.”](#)

**Spices:**

**TABLE A 11: SPICES PRODUCTION OF KALIMPONG**

Name	Area in (Thousand ha)	Production (2023-24)	Unit
Ginger (Fresh)	1.17	25.89	Thousand MT
Large Cardamom	1.5	0.4	
Garlic	0.04	0.35	
Termeric (Dry)	0.15	0.24	
Coriander	0.142	0.169	
Red Pepper	0.075	0.118	
Fenugriek (Methi)	0.065	0.07	
Bay Leaves/Tejpata	0.01	0.02	
Fennel(Mouri)	0.008	0.006	
Black Pepper (Golmorich)	0.013	0.003	
All Spices	3.713	27.266	

Source: [“Report from the Directorate of Horticulture Dept. of FPI & H, Govt. of W.B.”](#)

**TABLE A 12: LIST OF MSME CLUSTER**

Name Of Cluster	Activity Of Cluster	Cluster Under Dpt.	No Of Unit	No. Of Employees
Todey Tangta Jaldhaka Agro Processing Industrial Co-Operative Society Ltd	Large Cardamom Processing	MSME	43	120
Kalimpong Horticulture Society Bee Project.	Honey Processing	KHADI	1009	1009
Kalimpong Dhup Batti Cluster		MSME	15	2000

Kalimpong Floriculture Cluster		MSME	15	2000
Kalimpong Cardamom Processing Cluster		MSME	15	2000
Kalimpong Metal Craft Cluster		MSME	15	2000
Lingse Lingsekha Agro Processing Industrial Cooperative Society Ltd.	Broom Making	MSME	23	48
Kalimpong Metal Craft		MSME	15	2000
Sakyong Floriculture Agro Processing Cluster		MSME	22	120
Unggeek Agro Processing Cluster		MSME	15	60

Source: [Cluster Section | Micro, Small & Medium Enterprises, Government of West Bengal](#)

**TABLE A 13: BANKING PROFILE**

PLP – 2024-25 KALIMPONG

बैंकिंग प्रोफाइल Banking Profile											
राज्य District	Kalimpong		Jharkhand		West Bengal		लीड बैंक Lead Bank State Bank of India				
1. नेटवर्क और पहुंच NETWORK & OUTREACH (As on 31/03/2023)											
एजेंसी Agency	बैंक/सोसाइटी की संख्या No. of Banks/Soci.	कुल Total	ग्रामीण Rural	अर्ध-शहरी Semi-urban	शहरी Urban	संबन्धित ग्राम विस्तार संस्थान mFLN/mFLCs	एस्पिराजी/जेएलजी NIGs/JLGs	प्राथमिक/बीएस/बीएस/बीएस	गांव Villages	घरेलू Households	
	वाणिज्यिक बैंक Commercial Banks	4	4	4	3	17		4340	30	25	2500
क्षेत्रीय ग्रामीण बैंक Regional Rural Bank	1	6	5	0	1		4000	12	20	2000	
जिला मध्यवर्ती सहकारी बैंक District Central Coop. Bank	2	4	2	1	1		674	22	15	1200	
सहकारी कृषि और ग्रामीण विकास बैंक Coop. Agr. & Rural Dev. Bank	1	1		0	1		78				
प्राथमिक कृषि सहकारी सोसाइटी Primary Agr. Coop. Society	1	35	35						22	200	
अन्य Others											
सभी एजेंसियाँ All Agencies	36	35	41	4	20		9272	64			
2. जमा बकाया DEPOSITS OUTSTANDING											
एजेंसी Agency	खाता की संख्या No. of accounts			वृद्धि Growth (%)		शेयर Share (%)		जमा राशि (₹. लाख में) Amount of Deposit (Rs.lakh)			
	31-Mar-21	31-Mar-22	31-Mar-23	31-Mar-21	31-Mar-22	31-Mar-21	31-Mar-22	31-Mar-23	वृद्धि Growth (%)	शेयर Share (%)	
वाणिज्यिक बैंक Commercial Banks	1615516	N.A.	N.A.	N.A.	N.A.	N.A.	N.A.	150433	166399	N.A.	85.34
क्षेत्रीय ग्रामीण बैंक Regional Rural Bank	344445	N.A.	N.A.	N.A.	N.A.	N.A.	N.A.	9307	9993	N.A.	5.27
सहकारी बैंक Cooperative Banks	188626	N.A.	N.A.	N.A.	N.A.	N.A.	N.A.	16545	17312	N.A.	9.39
अन्य Others		N.A.	N.A.	N.A.	N.A.	N.A.	N.A.			N.A.	NA
सभी एजेंसियाँ All Agencies	2148587	N.A.	N.A.	N.A.	N.A.	N.A.	N.A.	168418	176885	193794	19.37
3. ऋण और आगे बकाया LOANS & ADVANCES OUTSTANDING											
एजेंसी Agency	खाता की संख्या No. of accounts			वृद्धि Growth (%)		शेयर Share (%)		जमा राशि (₹. लाख में) Amount of Deposit (Rs.lakh)			
	31-Mar-21	31-Mar-22	31-Mar-23	31-Mar-21	31-Mar-22	31-Mar-21	31-Mar-22	31-Mar-23	वृद्धि Growth (%)	शेयर Share (%)	
वाणिज्यिक बैंक Commercial Banks	NA	NA	N.A.	N.A.	N.A.	NA	NA	6118	76644	N.A.	77.73
क्षेत्रीय ग्रामीण बैंक Regional Rural Bank	NA	NA	N.A.	N.A.	N.A.	NA	NA	4843	15921	N.A.	6.16
सहकारी बैंक Cooperative Banks	NA	NA	N.A.	N.A.	N.A.	NA	NA	22663	6235	N.A.	16.11
अन्य Others											
सभी एजेंसियाँ All Agencies	NA	NA	NA	NA	NA	100.00	65029	78624	97900	59.55	100.00
4. नकद जमा-अनुपात CD RATIO											
एजेंसी Agency	सीडी अनुपात CD Ratio										
	31-Mar-21	31-Mar-22	31-Mar-23								
वाणिज्यिक बैंक Commercial Banks	34	41	46								
क्षेत्रीय ग्रामीण बैंक Regional Rural Bank	42	52	62								
सहकारी बैंक Cooperative Banks	47	77	82								
अन्य Others											
सभी एजेंसियाँ All Agencies	49	45	51								
5. वित्तीय समवैशक के तहत प्रदर्शन (खाता की संख्या)											
एजेंसी Agency	31 मार्च तक 2023 संघीय जानकारी										
	PMJDY	PMJSBY	PMJJBY								
वाणिज्यिक बैंक Commercial Banks	NA	NA	NA								
क्षेत्रीय ग्रामीण बैंक Regional Rural Bank	NA	NA	NA								
सहकारी बैंक Cooperative Banks	NA	NA	NA								
अन्य Others	NA	NA	NA								
सभी एजेंसियाँ All Agencies	NA	NA	NA								
6. राष्ट्रीय लक्ष्यों को पूरा करने के लिए प्रदर्शन (31/03/2023) तक PERFORMANCE TO FULFILL NATIONAL GOALS (As on 31/03/2023)											
एजेंसी Agency	प्राथमिक क्षेत्र ऋण Priority Sector Loans		कृषि क्षेत्र का ऋण Loans to Agr. Sector		कमजोर वर्ग का ऋण Loans to Weaker Sections		डीआरआई योजना के अंतर्गत ऋण Loans under DRI Schemes		महिलाओं को ऋण Loans to Women		
	राशि (₹. लाख में)	कुल ऋणों का %	राशि (₹. लाख में)	कुल ऋणों का %	राशि (₹. लाख में)	कुल ऋणों का %	राशि (₹. लाख में)	कुल ऋणों का %	राशि (₹. लाख में)	कुल ऋणों का %	
वाणिज्यिक बैंक Commercial Banks	3920	67.51	NA	NA	NA	NA	NA	NA	NA	NA	
क्षेत्रीय ग्रामीण बैंक Regional Rural Bank	2040	9.89	616	NA	NA	NA	NA	NA	NA	NA	
सहकारी बैंक Cooperative Banks	4425	21.49	2201	NA	NA	NA	NA	NA	NA	NA	
अन्य Others	259	1.29	NA	NA	NA	NA	NA	NA	NA	NA	
सभी एजेंसियाँ All Agencies	20635	100.00	NA	NA	NA	NA	NA	NA	NA	NA	
7. वार्षिक ऋण योजनाओं के तहत एजेंसी-वार प्रदर्शन AGENCY-WISE PERFORMANCE UNDER ANNUAL CREDIT PLANS											
एजेंसी Agency	2020-21		2021-22		2022-23		वर्षों में औसत				
	लक्ष्य (₹. लाख में)	उपलब्धि (₹. लाख में)	लक्ष्य (₹. लाख में)	उपलब्धि (₹. लाख में)	लक्ष्य (₹. लाख में)	उपलब्धि (₹. लाख में)					
वाणिज्यिक बैंक Commercial Banks	45960	24357	53.00	48826	18753	38.41	55845	13930	24.94	38.8	
क्षेत्रीय ग्रामीण बैंक Regional Rural Bank	9495	2269	23.90	7559	2095	27.75	12416	2040	15.21	22.3	
सहकारी बैंक Cooperative Banks	11216	4739	41.26	12890	723	5.21	4922	4665	94.59	47.9	
अन्य Others	0	0	0.00	0	0	0.00	0	0	0.00	0.0	
सभी एजेंसियाँ All Agencies	66891	31345	46.86	70266	21571	30.43	74193	20635	27.81	35.88	
8. वार्षिक ऋण योजनाओं के तहत क्षेत्र-वार प्रदर्शन SECTOR-WISE PERFORMANCE UNDER ANNUAL CREDIT PLANS											
बड़े क्षेत्र Broad Sector	2020-21		2021-22		2022-23		वर्षों में औसत				
	लक्ष्य (₹. लाख में)	उपलब्धि (₹. लाख में)	लक्ष्य (₹. लाख में)	उपलब्धि (₹. लाख में)	लक्ष्य (₹. लाख में)	उपलब्धि (₹. लाख में)					
फसल ऋण Crop Loan	20861	5769	27.65	18274	5629	30.80	31061	8711	28.04	28.83	
टर्म लोन (कृषि) Term Loan (Agr)	6274	286	4.49	9769	447	4.58	910	79	7.69	5.58	
कुल कृषि ऋण Total Agr. Credit	27135	6055	22.23	28043	6076	21.67	31971	8781	27.47	23.79	
प्रतिस्पर्धी MSME	28982	1197	3.82	36360	8029	22.08	32522	5268	16.79	25.80	
अन्य प्राथमिकता क्षेत्र Other Priority Sectors	10671	14993	138.07	5863	7466	127.34	10679	6586	61.67	107.93	
कुल प्राथमिकता क्षेत्र Total Priority Sector	66891	31345	46.86	70266	21571	30.43	74193	20635	27.81	35.03	

एजेंसी Agency	2020-21			2021-22			2022-23			वर्षों में औसत %
	कुल बकाया	एनपीए राशि	एनपीए का % % NPA	कुल बकाया Total	एनपीए राशि	एनपीए का %	कुल बकाया	एनपीए राशि	एनपीए का %	
वाणिज्यिक बैंक Commercial Banks	27852	17403	62	N.A.	N.A.	N.A.	27770	374	1.35	N.A.
क्षेत्रीय ग्रामीण बैंक Regional Rural Bank	5912	3810	64	N.A.	N.A.	N.A.	5528	160	2.89	N.A.
सहकारी बैंक Cooperative Banks	2186	1725	79	N.A.	N.A.	N.A.	6478	300	4.63	N.A.
अन्य Others				N.A.	N.A.	N.A.	N.A.	N.A.	NA	N.A.
सभी एजेंसियाँ All Agencies	35950	22938	64	N.A.	N.A.	N.A.	39776	834	2.10	N.A.

\* इस तालिका क्षेत्र में निर्यात क्षेत्र, शिक्षा, आवास, सामाजिक आधारभूत संरचना तथा नवीकरणीय ऊर्जा क्षेत्र शामिल हैं। OPA includes Export Credit, Education, Housing, Social Infrastructure, Renewable Energy

स्रोत Sources : LEAD BANK & SLBC

Source: <https://www.nabard.org/>

**Table A 14 : PRODUCTS EXPORTED FROM KALIMPONG**

ITCHS Code	Item Desc	Sum of Value (INR)
6012090	Other Blbs, Tubers, Tubrus Roots Etc.	17740476
6029090	Other Live Plants	13101151
62144090	Shwls Scrvs, Mufflrs Etc Of Artificial Fbrs - Other	10569482
6012010	Bulbs Horticultural	9204588
6022090	Other Trees, Shrbs And Bush Grftd/Not	6659040
12093000	Seeds Of Herbaceous Plnts Cultvtd For Flwrs	3094517
12060090	Other Sunflower Seeds W/N Broken	2022600
51121990	Others Wovn Fbrcs Contng >=85% By Wt Of Comb Wool/Fine Anml Of Wt Excding 200 G/M2	862758
12099990	Other Seeds Etc For Planting N.E.S	599849
55151130	Fbrc Of Polstr, Mxd Wth Viscos Ryon, Dyed	523482

Source: [Dashboard of Ministry of Commerce & Industry, Govt of India](#)