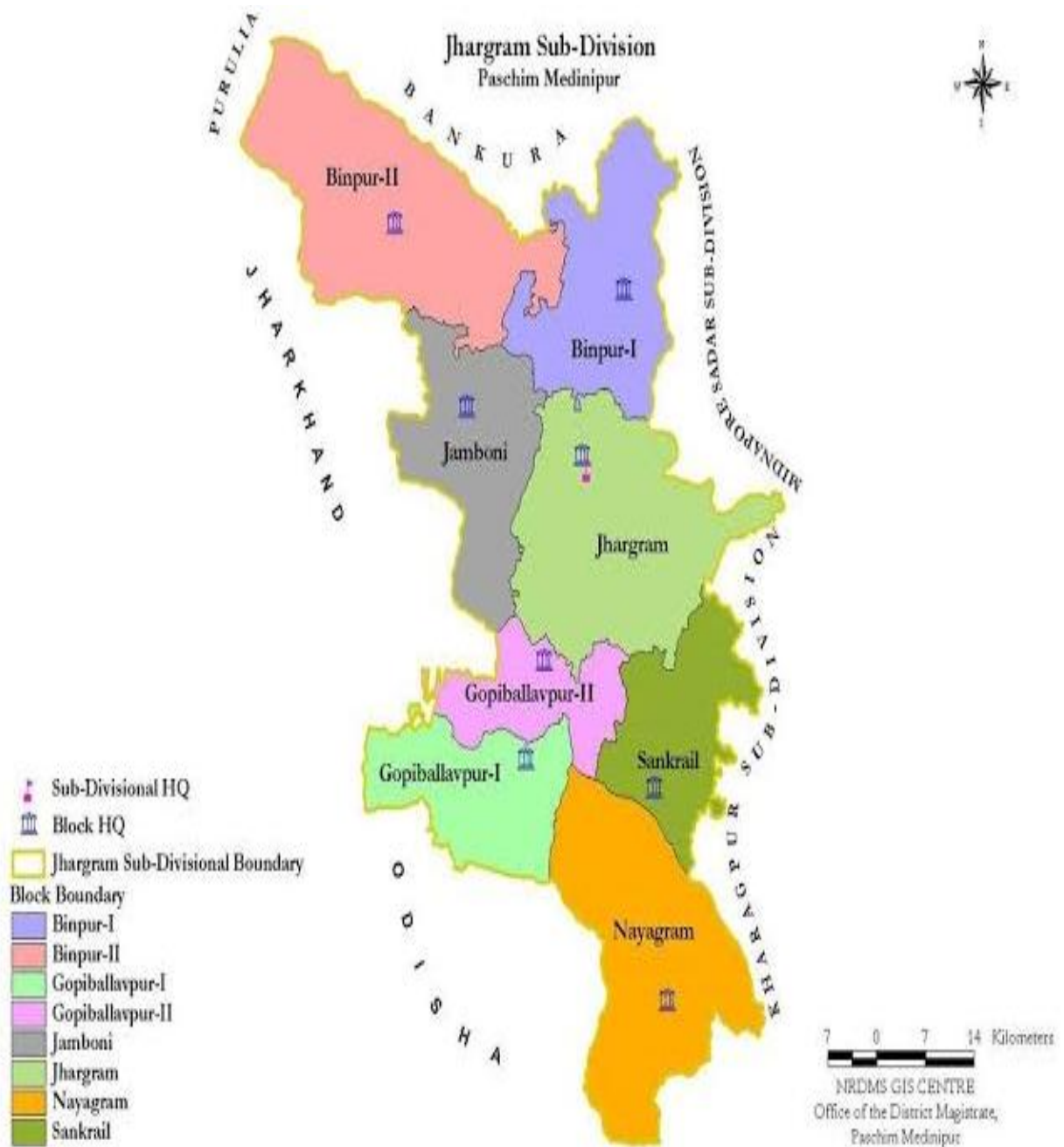


DISTRICT PROFILE

JHARGRAM



CONTENT

1. INTRODUCTION

Jhargram is a district in the Medinipur division, one of the five administrative divisions of West Bengal. The headquarters is in Jhargram. The district came into existence on 4 April 2017 after the bifurcation of Paschim Medinipur into Paschim Medinipur and Jhargram, which lies to its northeast. The district lies between the Kangsabati River in the north and the Subarnarekha River in the south, forming part of the western fringes of the Chota Nagpur plateau sloping into the lower delta region. The terrain is undulating laterite and red earth with hill ranges such as Belpahari and Kankrajhor in the north and the Subarnarekha floodplain to the south. The name “Jhargram” literally means “forest village” or a settlement surrounded by trees and canals, deriving from its original settlement pattern in dense jungle areas. Jhargram district offers a natural forest landscape with sal and mahua trees, wildlife including elephants and deer, ancient temples, royal palaces and rich tribal art forms and folk rhythms, making it a unique cultural and ecological region.

2. CLIMATIC CONDITIONS

In Jhargram, the monsoon season is hot, humid, and rainy. The dry season is very hot, dry, and sunny. The temperature typically varies from 66 °F to 87 °F through the year. On rare occasions, it drops to 47 °F or rises to 110 °F. Annual rainfall averages about 1,547 mm. The district receives rain on about 149 days per year. Temperatures peak in May and June, reaching up to 46 °C (115 °F) in the hot and dry months. In December and January, night-time temperatures can plunge to 4 °C (39 °F).

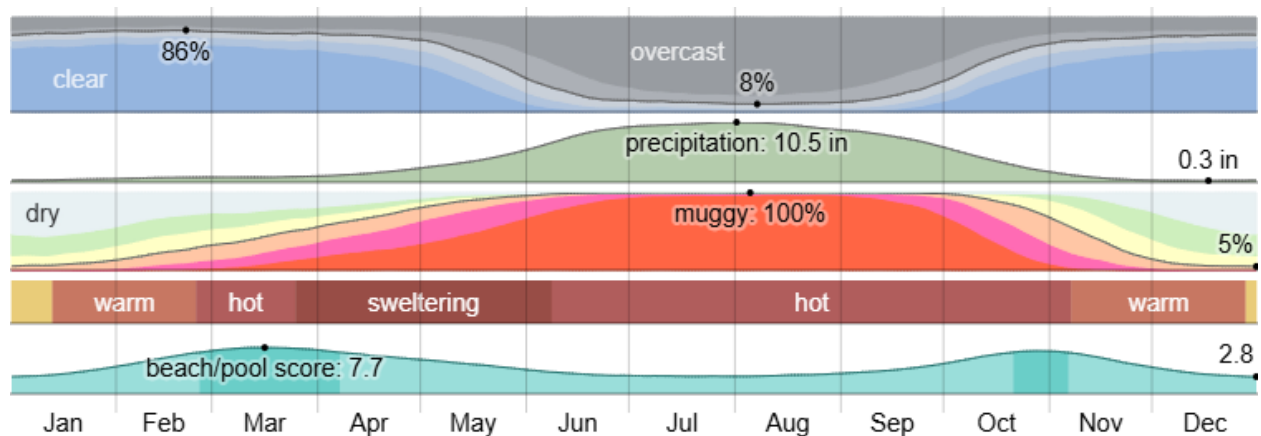


Fig 1 : Climatic Mapping of Paschim Medinipur
Source : Weather Spark

3. ADMINISTRATIVE PROFILE

The administrative setup of the district is led by the District Magistrate cum Collector. Under the District Magistrate, there are 4 Additional District magistrates.

Jhargram district has 09 police station and 01 all women police station in total. Further there are 08 blocks under Jhargram district.

The distribution of the administrative order has been detailed below in Fig 2. The details of the same are given in the annexure(Ref: Table A1,A2,A3).

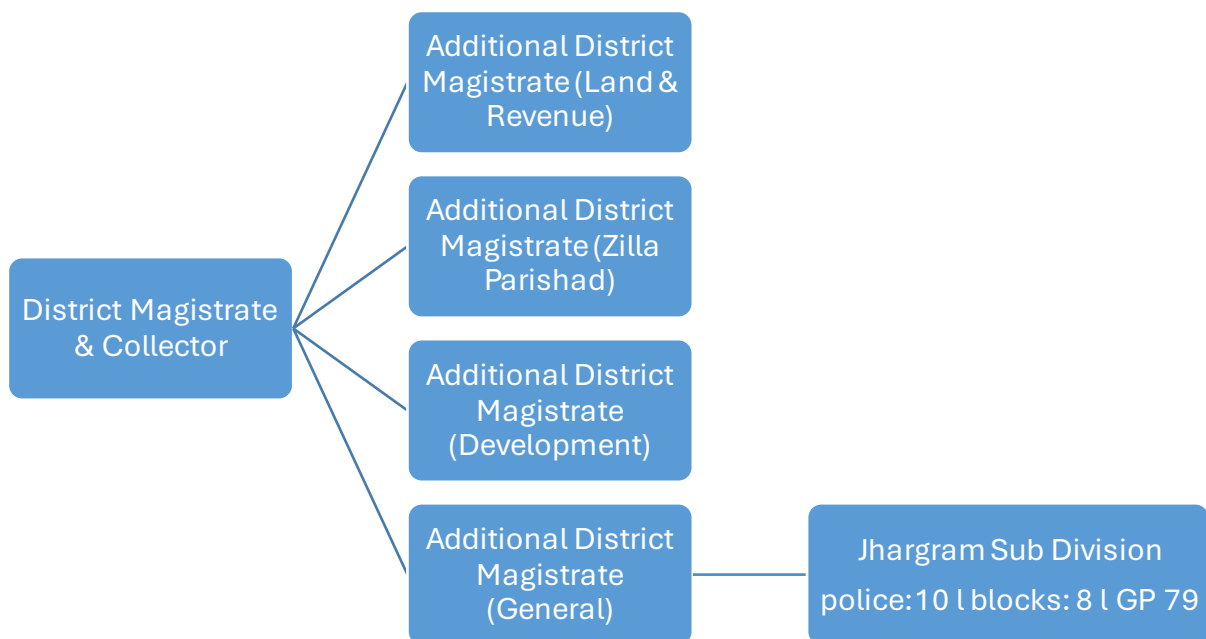


Fig:2 Administrative Flow of Jhargram
Source: Data Compiled from Official website of Jhargram

4. LOCATION AND GEOGRAPHY

The district of Jhargram lies **between latitude 22°16' N and 22°45' N and longitude 86°30' E and 87°15' E**. It forms part of the western fringe of the Chota Nagpur Plateau, sloping gradually toward the east into the lower plains. The terrain in the northwestern part is undulating and hilly, with lateritic soil and rocky terrain, and includes areas like Kakrajhore reaching about 300 metres altitude; southern blocks such as Nayagram and Gopiballavpur have

elevations around 65 metres. The district headquarters, Jhargram town, has an elevation of about 80 metres.

The district area is approximately 3,037.64 km².

Jhargram is bounded by:

- Purulia and Bankura districts to the northwest and north, respectively
- Paschim Medinipur district to the east
- Odisha state to the south and southwest
- Jharkhand state to the west

Forest cover in the district totals around 59,497 ha, out of the total area; the remainder is largely agricultural land about 268,249 ha.

Major rivers and water features include:

- **Kangsabati (Kasai) River**, which flows generally west to east through the district.
- **Subarnarekha River**, entering from the west, passing the south, and continuing toward the Bay of Bengal.
- **Dulung River, a tributary of Subarnarekha**, flowing southward through Jamboni and Sankrail areas.
- Other small rivulets like Deb, Palpala, Rangium, Kupon, etc¹.

5. DEMOGRAPHY

According to the Official website of the district, Jhargram has a population of around 1.37 million or 11,37,163 people. Among the total population, 70.92% people are literate.

The demographic distribution of the district is given as follows,

Table 1 : Demographic Distribution

Parameters	Population
Total Population	1,37 Million (11,37,163)
Literacy Rate	70.92%

¹ Data compiled from the website of District Jhargram, Govt of West Bengal

6. LOGISTIC INFRASTRUCTURE PROFILE

Road Transport

The district is well connected through a wide- spread network of Road ways maintained by the local authorities of the district. Connection established by the state highways, through almost all part of the state. Source: Public Works Department, Government of West Bengal. AH46 which is a part of the Asian Highway Network and also with other nearby cities like Medinipur (40 km over Dherua - Medinipur Road), Kharagpur (46 km over NH-6), Durgapur (156 km over SH-9), Asansol (181 km over NH-60 and SH-9), Bankura (114 km over SH-9 and 5), Purulia (142 km over SH-5), Haldia (150 km over AH46 and NH41), Contai (144 km over SH-5), Digha (165 km over NH-60), Kolkata/Howrah (169 km over AH46), Tatanagar (114 km over NH-33), Baripada (99 km over AH46 and NH-5)

The list of the Roadways is presented in Annexure (Ref: Table A 4, A5, in the Annexure section)².

Rail Transport

Jhargram is connected not only to larger cities in the region, but also to smaller towns and villages in the district. [Jhargram railway station](#) is on the [Kharagpur-Tatanagar section](#) of Howrah-Nagpur-Mumbai line, an express train route. The Jhargram railway station comes under [South Eastern Railway](#). Jhargram is well connected by train to nearest big city like [Kolkata/Howrah](#) (155 km), [Midnapore](#) (52 km), [Kharagpur](#) (39 km), [Asansol](#), [Tatanagar](#) (96 km), [Ranchi](#), [Dhanbad](#), [Rourkela](#), [Jharsuguda](#), [Bhubaneswar](#), [Cuttack](#), [Khurda](#), [Puri](#), [Bhilai](#) and also [Delhi](#), [Mumbai](#) etc.

The railway infrastructure in Jhargram district is primarily centered around the Howrah-Nagpur-Mumbai line, which passes through the region and is part of the South Eastern Railway zone. The main station is Jhargram, but several smaller stations also serve the district.

Key railway infrastructure

- **Main railway line:** The Howrah-Nagpur-Mumbai trunk route is a crucial transit corridor for both passenger and freight trains that runs through the district.

² Data compiled from the Public Work Development, Govt of West Bengal

- **Third line expansion:** A significant upgrade was completed in 2021 with the inauguration of a third railway line between Kalaikunda and Jhargram. This 30-kilometer section was built to ensure more seamless train movement on the busy Howrah-Mumbai route³.

Air Transport

The nearest Airport is Netaji Subhas Chandra Bose International Airport, Kolkata, India, which is about 181 km to Jhargram.

Kazi Nazrul Islam Airport (KNI Airport/ RDP) about 178 km to Jhargram.

Export infrastructure at Netaji Subhash Chandra Bose International Airport (CCU), Kolkata

Netaji Subhas Chandra Bose International Airport (CCU), Kolkata, boasts a well-developed International Air Cargo Terminal, essential for facilitating exports from the region and connecting businesses to global markets.

Here's a breakdown of its key features: International air cargo terminal

- Established Expertise:

Kolkata's International Air Cargo Terminal

holds the distinction of being the first of its kind in India, commissioned in 1975.

- Strategic Location: It's situated conveniently, just half a kilometer north of the international terminal building, with robust road infrastructure for seamless cargo movement.
- Extensive Facilities:
 - Covered Area: The terminal encompasses a vast 21,906 square meters of covered space, [according to www.nscbiairport.com](http://www.nscbiairport.com).
 - Capacity: It has an impressive annual holding capacity of 120,000 metric tons, including transshipment cargo.

³ Data compiled from Indian Railways and Press Release, Press Information Bureau, PMO, 2021

- Aircraft Accommodation: Four dedicated parking bays cater to freighter aircraft, accommodating large models like the Boeing 747.
- Integrated Services: The Airports Authority of India (AAI) has meticulously designed the terminal to offer a comprehensive range of facilities for efficient cargo processing, comparable to international standards.
- One-Stop Shop: All major airlines and regulatory agencies involved in pre-shipment formalities and clearance are conveniently housed under one roof, streamlining the export process.
- Export Wing: A dedicated export wing within the cargo terminal provides a covered area of 8,516 square meters, including an Elevated Transfer Vehicle (ETV) area of 1,333 square meters.
- Special Cargo Handling:
 - Cold Storage: Dedicated facilities with three chambers and controlled temperatures cater to temperature-sensitive cargo like pharmaceuticals, vegetables, fruits, and meat.
 - Strong Room: A secure strong room handles valuable cargo.
 - Hazardous Cargo Shed: A designated shed safely stores and manages hazardous cargo.
 - Transshipment Shed: Facilitates efficient transfer of goods between flights.

General facilities

- Integrated Cargo Management System (ICMS): An online system streamlines data processing and ensures efficient cargo management.
- Equipment: Forklifts, high reach takers, electronic and mechanical weighing machines, cargo trolleys, and power pallet trucks enhance operational efficiency.
- Parking & Docking: Dedicated idle Unit Load Device (ULD) parking areas and 16 truck docks ensure smooth flow of vehicles and cargo handling.
- Disposal Unit: Facilitates the disposal of unclaimed or uncleared cargo.

Connectivity and reach

- Kolkata International Air Cargo Terminal

serves as a critical hub for air cargo services across the entire Eastern and Northeastern regions of India.

- It facilitates international freight transactions with six major global market regions, including South-Asian, South-East Asian Countries, Western Countries, Middle-East Countries, and Central Asia.

In summary, Kolkata Airport's robust export infrastructure, including a well-equipped and strategically located cargo terminal, efficient processing systems, and dedicated facilities for various types of cargo, positions it as a vital gateway for businesses looking to export goods from Eastern India to the global marketplace⁴.

7. EXPORT INFRASTRUCTURE

Jhargram's export infrastructure is focused on developing local, traditional products like handicrafts and agro-processed goods, rather than large-scale industrial exports. The export infrastructure is primarily supported by state-level initiatives and a network of small and medium enterprises (MSMEs). A direct sea or air cargo route from the district is not a feature of its export infrastructure; instead, goods are transported to major regional hubs like Kolkata and Haldia for international shipping.

Land Custom Stations in the District

Jhargram district does not have any international land custom stations because it does not share a border with any foreign country. It is bordered by other districts in West Bengal and the Indian states of Jharkhand and Odisha.

For international trade, goods from Jhargram would need to be routed through a larger port or a land customs station elsewhere in the state⁵. The nearest major facilities are located in other districts of West Bengal that do share international borders, such as:

- **Petrapole** in North 24 Parganas district, a major land customs station on the border with Bangladesh.

⁴ Data compiled from Airport Authority of India

⁵ District website, Jhargram

- **Ghojadanga** in North 24 Parganas, another land customs station for trade with Bangladesh.

Integrated Checkposts in the District

Jhargram district does not have any Integrated Check Posts (ICPs) because it does not share an international border with any foreign country. ICPs are border facilities that integrate various government agencies like Customs, Immigration, and Border Security for the seamless movement of goods and people across international land borders.

As Jhargram is bordered by the Indian states of Jharkhand and Odisha, its border infrastructure consists of interstate checkpoints, not international customs stations⁶.

For international trade, businesses in Jhargram rely on major ICPs located in other parts of West Bengal that share a border with Bangladesh, Nepal, or Bhutan. The primary international ICPs in the region include:

- **Petrapole:** The largest and most prominent land customs station in Asia, located in North 24 Parganas on the border with Bangladesh.
- **Other ICPs in West Bengal:** Additional ICPs are located at Changrabandha, Ghojadanga, Hili, Fulbari, Panitanki, and Jaigaon, among others.

Cold Storage in the District

There are a limited number of cold storage facilities directly within Jhargram, as it is a relatively new district with a predominantly rural economy. As of 2022, only two cold storage facilities were reported in the district, a figure that is significantly lower compared to neighboring and older districts like Paschim Medinipur, which had over 90 units.

The current cold storage infrastructure includes:

- **Goaltore Cold Storage Pvt. Ltd.:** A potato cold storage facility is located in Goaltore.
- **Cold Store:** A potato cold storage unit is located in the Ankro area⁷.

Warehouse in the District

⁶ Data compiled from District website, Jhargram, Govt of West Bengal

⁷ Data compiled from the report of Ministry of Agriculture and Farmers Welfare Department Of Agriculture and Farmers Welfare, 2022

While Jhargram has some local storage capacity, a robust, large-scale warehousing infrastructure is largely underdeveloped. The district relies on local godowns and storage units, with larger-scale needs being served by modern warehousing hubs in neighboring, more industrialized districts like Paschim Medinipur, Hooghly, and Howrah. In Jhargram, warehouse infrastructure is limited, with local facilities primarily serving the agricultural sector for storing food grains. A robust network of large, modern private warehouses is not yet established within the district. Few existing warehouses are there registered under the railways.

8. AGRICULTURAL PROFILE

Agriculture in Jhargram is challenged by its rain fed and drought prone conditions, with undulating lateritic terrain that limits large-scale irrigation infrastructure. The district's soil and topography were among the key reasons ICAR affiliated institutions focused on crop diversification in tribal areas as recently as November 2023, promoting pulses, oilseeds, and vegetables in rice-fallow lands using geospatial soil assessment and targeted capacity building of local farmers.

Agriculture remains the backbone of the district's economy, with a diverse range of crops cultivated across seasons. Rice is the dominant crop, covering the largest area with 11,778 hectares in autumn (yield 2.49 t/ha) and 138,991 hectares in winter (yield 2.80 t/ha), contributing significantly to overall food grain production. Potato stands out with a remarkably high productivity of 28.64 t/ha from 5,174 hectares, producing over 1.48 lakh tonnes. Among pulses, Masoor (2,159 ha, yield 1.83 t/ha) and Gram (376 ha, yield 1.47 t/ha) play an important role in crop diversification, while Khesari (1,855 ha) and Arhar/Tur (103 ha) are also cultivated. Oilseeds such as Groundnut (1,390 ha, yield 2.21 t/ha) and Rapeseed & Mustard (6,135 ha) contribute to the oil economy. Fibre crops like Mesta (11 ha, yield 4.36 t/ha) and traditional crops like Sunflower (318 ha) and Horse Gram (102 ha) further highlight crop variety.

Overall, the cropping pattern reflects a balance between food grains, pulses, oilseeds, and horticultural crops, with rice and potato remaining the major contributors to food security. The district has a growing base of agricultural infrastructure to support productivity and storage.

Details of agricultural product table given in Annexure (Ref: Table A3)

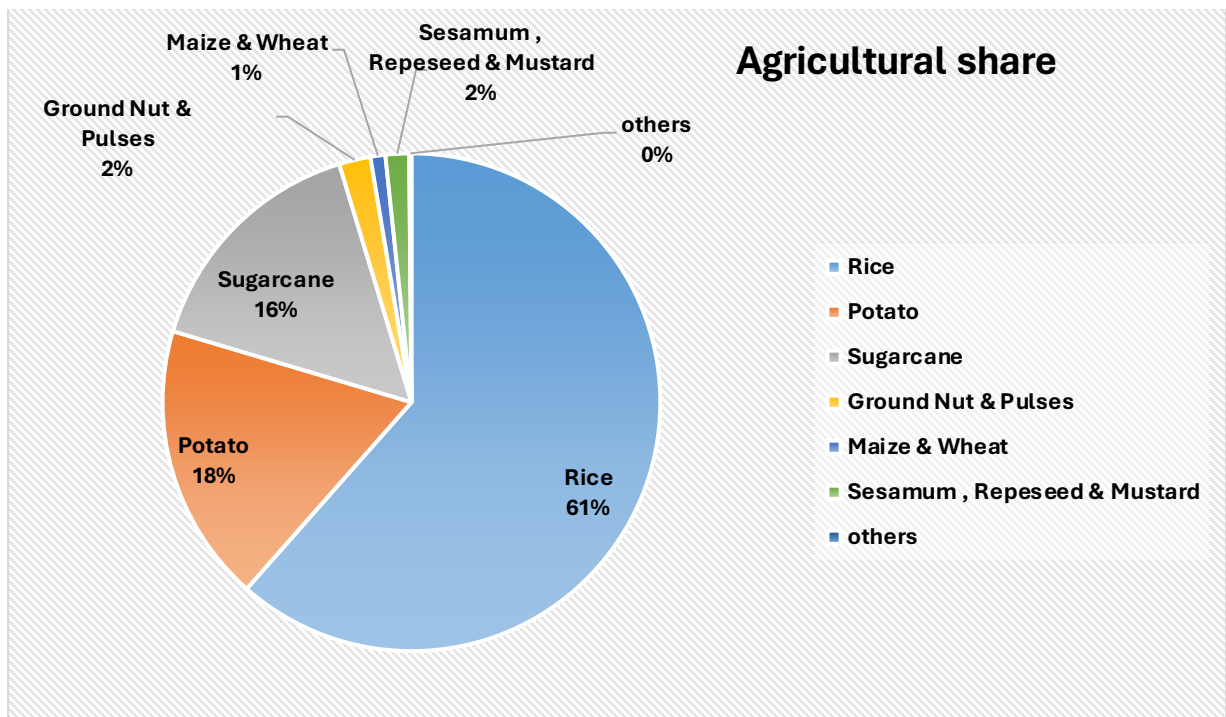


Fig 3: Agriculture Production Share in Jhargram

Source: Data compiled from Directorate of Economics & Statistics

As can be Observed from Fig 3, Rice is the most produced crop in the district with a share of 62%. It covers an area of 177645 Hectares. Potato is produced about 18% of the agricultural basket of the district covering land of 5174 Hectares. Further, is produced 16% covers an area of 1477 Hectares. There are several other crops being cultivating in the district. There are Ground Nut, Maize, Sesamum, Repessed & Mustard, Masoor, Khesari, Moong, Wheat, Urad, Gram, Peas& Beans, Sunflower, arhar/Tur, Sannhamp, Horse-Gram, Mesta.

The detailed Data of agricultural production is reported in the annexure (Ref: Table A6)

Horticulture Profile

Horticulture plays a vital role in the agricultural landscape of Jhargram, supporting the livelihood of a large number of farming households and contributing to the district's rural economy. The district has favourable agro-climatic conditions that encourage the cultivation of a wide range of vegetables, fruits, and flowers.

In 2023–24, vegetables were grown on 16.90 thousand hectares of land with a total production of 239.81 thousand metric tonnes. Brinjal, ladies' finger, cabbage, cauliflower, tomato, and watermelon are the major vegetables, while onion, radish, yam, arum, and cucumber also make a significant contribution to the vegetable basket.

Fruit cultivation covers 6.26 thousand hectares, producing 50.65 thousand metric tonnes annually. Mango is the most prominent fruit crop, followed by banana, citrus fruits, guava, papaya, and jackfruit. These crops not only provide nutritional security but also offer good market potential for farmers.

Floriculture is emerging as a promising sector in Jhargram. About 0.30 thousand hectares of land are under flower cultivation, yielding 0.187 thousand metric tonnes of loose flowers and 0.559 crore cut flowers. Gladiolus, marigold, tuberose, and rose are among the main flowers cultivated, contributing to the district's commercial horticulture activities.

Overall, horticulture in Jhargram reflects a balanced mix of vegetable, fruit, and flower cultivation, creating opportunities for income generation, employment, and agricultural diversification, while strengthening the district's agri-based economy⁸

Details of Vegetables, Fruits and Flowers are provided in annexure (Ref: Table A7, A8, A9, in the annexure section)

9. INDUSTRIAL PROFILE

Jhargram district has a rural, agrarian, and forest-based industrial profile, with micro, small, and medium enterprises (MSMEs) being the predominant type of industry. There is a limited presence of large-scale manufacturing.

Major industries and clusters

Agriculture and allied sectors

- **Primary industry:** Farming is the major occupation, with a large rural population dependent on it. The district produces a surplus of cereals, vegetables, and potatoes.
- **Animal husbandry:** The district has growth potential in piggery, goat rearing, and poultry for both meat (broiler) and eggs (layer).
- **Forest-based products:** With a significant forested area, the economy relies on products from the forest, such as medicinal plants and wood.

⁸ Data compiled from Directorate of Horticulture and Department of Food Processing & Industries, Govt of West Bengal

- **Food processing:** The district has potential for setting up fruit and vegetable processing units, which is supported by National Bank for Agriculture and Rural Development (NABARD) credit assessments. Kanchan Oil Industries is one example of a local food processing unit⁹.

Jhargram Industrial park

Jhargram industrial park span a total area of 149.64 acres, offering significant potential for industrial development. The park provides attractive leasing terms, with an annual lease rent is 1000 rupees per acre and a lease premium is 16,17,214.65 rupees per acre¹⁰.

Source: <https://wlmswbiidc.wb.gov.in/>

Apart from these, there are a few other industries in Jhargram as well:

The industrial presence includes boiler-related units such as solid fuel fired boilers, thermic fluid heaters, and oil/gas-fired boilers. High-impact industries like cement manufacturing, iron and steel processing, asbestos-based industries, fertilizer production, and oil refining also operate in the district.

The agro and food processing sector is prominent, with a significant number of parboiled rice mills, cashew processing units, flour mills, and vegetable oil plants. Additionally, there are industries engaged in reprocessing waste plastic, rubber goods manufacturing, detergent formulation, textile processing, carpentry, and saw mills.

Mining and mineral-related activities, including coal and ore processing, ore beneficiation, and sand/riverbed mining, are also notable. The district has several units producing construction materials like bricks, fly ash products, and stone crushers. Miscellaneous industries include metal extraction, soap manufacturing, mineral water production, and traditional oil mills.

The details about the industries have been provided in the annexure.

MSME Clusters:

⁹ Brief Industrial Profile of Purba & Paschim Medinipur, DC MSME and Jhargram PLP 2019-20, NABARD

¹⁰ Data compiled from West Bengal Industrial Infrastructure Development Corporation

Micro, small and medium Enterprises (MSMEs) form the backbone of the district's economy. Contributing significantly to Industrial growth, employment generation and inclusive development. The sector comprises diverse clusters such as handloom, wooden furniture, copper ornaments and steel fabrication, which reflect both traditional craftsmanship and modern industrial skill. MSMEs not only provides livelihood opportunities, especially in rural and semi-urban areas, but also support entrepreneurship, innovation and value addition in local industries¹¹.

- ***Clay & Ceramic Sector***

The *Dangikusum Stone Curving Cluster* is renowned for its traditional craftsmanship in clay and ceramic art, particularly stone carving. Rooted in heritage, artisans in this cluster produce decorative and functional items including idols, sculptures, tiles, and home décor products. The region has access to good quality stone and clay, enabling artisans to preserve ancient carving techniques while also adapting to modern designs. The cluster not only sustains local employment but also serves as a cultural hub for clay and ceramic artistry in the region. 29 units engaging 52 nos of workers.

- ***Wooden Furniture Sector***

Wooden Furniture cluster specializes in handcrafted wooden furniture and allied wood products. The artisans create a wide range of products including chairs, tables, cupboards, and custom-designed furniture using locally sourced timber. The region's carpentry traditions are evident in the detailed joinery and durable craftsmanship. Despite being a smaller cluster in terms of units, it offers a significant livelihood to the local artisans and continues to evolve by introducing modern tools and eco-friendly production practices.

- ***Steel Fabrication Sector***

Cluster is centered around metal fabrication and blacksmithing, with artisans skilled in forging, welding, and shaping metal into both functional and ornamental products. Common outputs include metal furniture, tools, gates, grills, and household implements. The Khasjungle Dharampur area has a legacy of blacksmithing that supports both domestic and local industrial needs. Cooperative efforts in this cluster help in pooling resources and training new artisans, keeping the traditional trade alive and competitive. Around 35 units are there in steel fabrication sector which gives engages 78 labour forces.

¹¹ Data compiled from Directorate of MSME, Govt of West Bengal

- ***Jute & Other Fibre Based Sector***

The *Centre of Excellence* in jute and fiber-based products is a major employment generator and a hub of innovation in sustainable textiles. Despite being a single large unit, it supports over 5,680 employees, showcasing its industrial scale. The center focuses on developing eco-friendly jute goods such as bags, mats, home decor, geotextiles, and composite fiber products. It combines traditional weaving techniques with modern processing technologies, making it a flagship initiative for green industry practices in India.

The details of the clusters are given in the table in the Annexure (Ref: Table A10).

- ***Jangal Mahal Tsar Cluster***

The cluster is a SFURTI cluster with 997 artisans engaged under the technical guidance of Tsar Development Foundation.

10.BANKING PROFILE

The district is served by 95 bank branches involving 77 bank branches of commercial banks , one branch each 02 private sector banks (Axis & ICICI) of , 7 branches of Bangiya Gramin Vikash Bank, 10 branches of Vidyasagar District Central Cooperative Bank , one branch of Jhargram Primary Cooperative Agriculture and Rural Development Bank , There are 128 PACS catering the credit need of the farmers in remotest corner of the district.

The CD ratio of the district is at 40.95% as on 31. 03.18 . The share of advance outstanding of commercial banks , Cooperative and RRB stood at 75.41 %,19.41%, 5.18 % respectively as on 31.03.18 . The CD ratio of public sector commercial banks , pvt sector commercial bank, ST cooperative banks and RRB stood at 39.20 %, 9.97%, 59.33% and 40.90% respectively as on 31.03.18. The total advance outstanding as on 31.03.18 was at ₹ 1397.84 cr¹². (Refer Table A11 in the Annexure)

11.ODOP SECTOR OF THE DISTRICT

From the above mentioned industries and sectors of production, the following have been chosen to be the ODOP sectors.

¹² PLP Report of Jhargram, 2021 NABARD

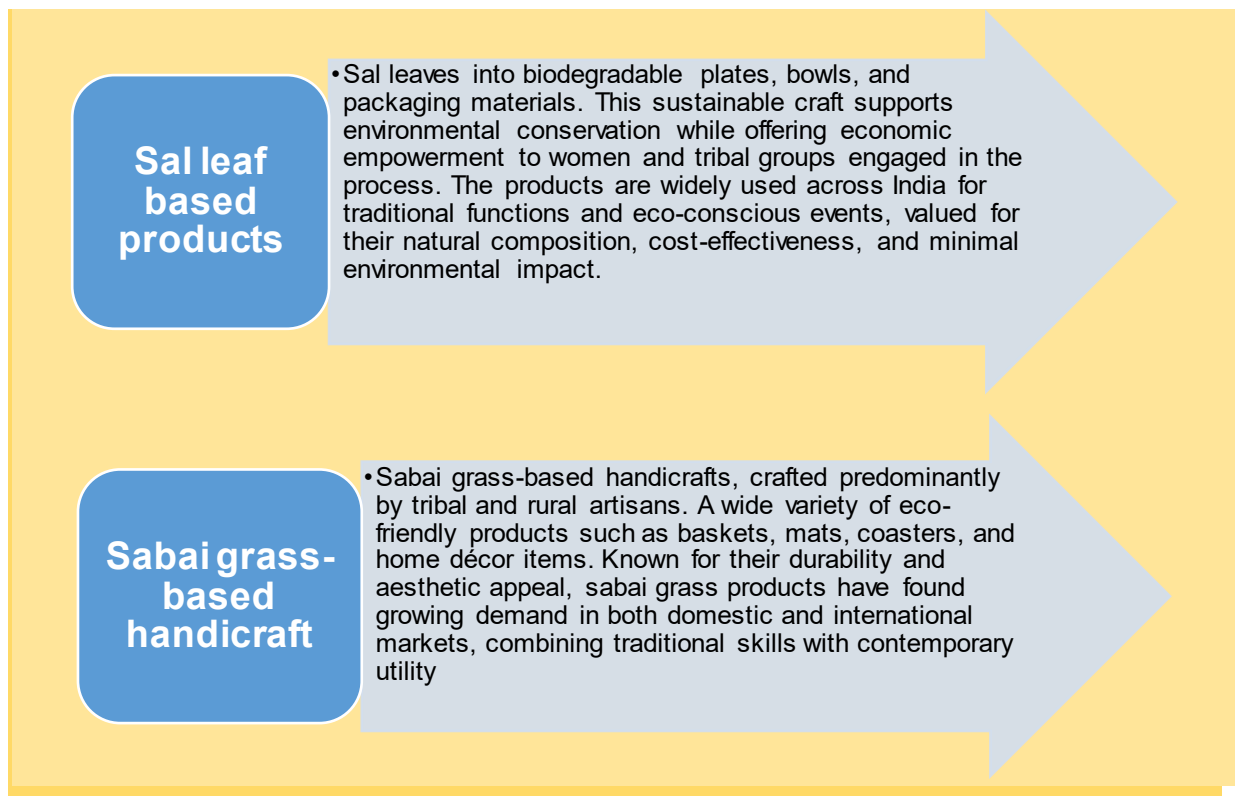


Fig 4: ODO details of the district

12.EXPORT PROSPECTS AND POTENTIALITY OF THE DISTRICT

The export performance of Jhargram district has experienced a significant decline over the past few years. Between the fiscal years 2022-23 and 2024-25, exports from the district fell sharply by 71.33%, indicating a substantial slowdown in trade activities. The clear dominance of the Ferro-silico-Manganese under Minarals i.e. 99.9% of the total export has been observed. The remaining share consists of home textiles such as bedsheets, medical tex such as gaugs (lvl indicators and lvl regulator) and a very small percentage of Instruments, appliances and machine for measuring or checking, not elsewhere specific in chapter 90 (excl. optical). (Ref: Table A12).

On comparing the product of interest of the District with India’s export trend of those products and World Import market of those products, it has been found that for the Ferro products (HS Code 72024100, 720230000 and 72031000), India has shown a huge remarkable growth in five years ending 2024, specially for the Ferro Silica Manganese and Ferro Iron Ore, whose export from India has risen by 70% and 183% respectively between

2020-2024. The other products also like measure gauge (HS Code 90261020) and the musical instrument (HS Code 90318000) have both positive growth in exports from India as well in World Import. It has been observed that for Quartz Powder (HS Code 2061020) , the world import is higher than India's export growth. Hence, this indicates a great scope of this product in the international market. Comparing the Global importers and Indian importing markets, It has also been observed that there are several such countries whom India is not exporting to its fullest which can be targeted for better growth. (Refer Table below)

Table : Export growth and market potentiality for the interested products of Jhargram.

HS Code	Product Details	Exported value in 2020 (in us million)	Exported value in 2021 (in us million)	Exported value in 2022 (in us million)	Exported value in 2023 (in us million)	Exported value in 2024 (in us million)	Export growth of India in five years (in %)	World Import Growth of the sector @ 6 digit in five years (in %)	Top five importers of India	Top ten importer of the sector @ 6 digit in world market	India's rank in world exporter list of the sector
7202300	FERRO-SILICO-MANGANESE	0.60	1.27	1.61	1.08	1.02	69.73	2	Japan, Egypt, UAE , Italy, Taipei, Chinese	USA, Turkiye, Japan, Italy, Germany , Korea, Republic of, Indonesia, Egypt, UAE, Taipei, Chinese	1
7203100	FERS PRDCT OBTND BY DRCT RDCTN OF IRON ORE	0.16	0.27	0.45	0.51	0.46	182.76	2	Russian Federation, UAE, Oman, South Africa, Bahrain	Nepal, Bhutan, Madagascar, Armenia, Tanzania, United Republic of, Indonesia, Sri Lanka, Kenya, Mauritius, Saudi Arabia	4
7202410	FERRO-CHROMIUM CARBON CONTNG>4% BY WT	0.60	0.98	0.93	1.07	0.66	10.10	7	China, Korea, Republic of, Taipei, Chinese, Japan, Netherlands	China, Indonesia, Japan, USA, Korea, Republic of, Belgium, Germany, Netherlands, Taipei, Chinese, Spain	3

63041910	BEDSHEETS AND BED COVERS OF COTTON	0.74	0.57	0.38	0.60	0.77	3.27	1	USA, Canada, Australia, UK, Israel	USA, India, France, Germany, Spain, UAE, UK, Malaysia, Italy, Israel	1
25061020	QUARTZ, POWDER	0.03	0.04	0.03	0.03	0.03	11.29	31	China, Malaysia, Japan, Korea, Republic of, Viet Nam	China, Norway, Japan, Thailand, UK, Germany, Malaysia, Viet Nam, Korea, Republic of	1
90261020	GAUGS LVL(LVL INDICATORS AND LVL REGULATORS)	0.02	0.02	0.02	0.03	0.03	74.64	10	USA, South Africa, Australia, Singapore, Germany	USA, China, Germany, UK, Brazil, Canada, France, Italy, Mexico, Korea, Republic of	12
90318000	OTHR MSRNGANDC HCKNG INSTRMNTS,AP PLNCSANDMC HNS	0.10	0.14	0.14	0.16	0.19	92.32	7	USA, Germany, China, Hong Kong, China, UAE, UK	China, USA, Germany, Mexico, Korea, Republic of, India, Japan, UK, Netherlands, Italy	----

Source: [Trade Map](#)

13.SWOT ANALYSIS

Studying and examining the different aspects of the district and also collecting data from the primary and secondary sources and the focus group discussions conducted in the district, the SWOT Analysis of the district in terms of export development has been depicted below:

<p>STRENGTHS</p> <ul style="list-style-type: none"> • Rich natural resources – forests (sal, kendu, mahua, sabai grass) and rivers (Subarnarekha, Kangsabati). • Large proportion of workforce engaged in agriculture and allied activities. • Presence of unique ODOP products – sal leaf plates, sabai grass craft, lac, cashew nut – with traditional skills. • Strong rail and road connectivity (Howrah–Nagpur–Mumbai line, AH-46 highway). 	<p>WEAKNESSES</p> <ul style="list-style-type: none"> • Predominantly rain-fed, drought-prone agriculture with low irrigation coverage. • Undulating lateritic soil with low fertility and low crop productivity. • Lack of large-scale industries and agro-processing units, leading to limited employment opportunities. • High dependence on mono cropping (mainly paddy) and seasonal migration of rural workers. • Inadequate cold storage, warehousing, and marketing linkages for agri-produce.
<p>OPPORTUNITIES</p> <ul style="list-style-type: none"> • Expansion of horticulture, floriculture, and organic farming to diversify agriculture. • Development of agro-based MSMEs (sal leaf plates, sabai grass rope, cashew processing, pulses, oilseeds) • Supportive schemes of both the Central and State Governments for exports • E-commerce exports are gaining momentum 	<p>THREATS</p> <ul style="list-style-type: none"> • Climate change risks: erratic rainfall, frequent droughts, and extreme weather. • Ongoing soil erosion and land degradation reducing productivity. • Market competition from more developed neighboring districts (Paschim Medinipur, Bankura, Purba Medinipur).

14. EXPORT CHALLENGES IN JHARGRAM DISTRICT

Jhargram district is predominantly **rain-fed and drought-prone** with low irrigation coverage based on agricultural and forest products. As a newly formed district and based on its demography, it has limited scope for exports. The majority of the exports of the district is accounted by Ferro-Silica-Manganese which accounts for 99% of the exports. The district has potential for exports of forest based products. The broad issues for the exported and potential products of the district include insufficient road infrastructure, warehouse and storage facilities, limited market access, and lack of awareness about business practices and international markets.

Infrastructure and logistics

- Warehouse and cold storage facilities: The district needs to have proper warehouse and storage facilities to tap the agro and forest based products.
- Though the district has more production sal leaves and Mahua flowers, the export potential of the same has not been explored more. The infrastructure and logistics for export of such products is a major constraint.

Market access and finance

- Difficulty reaching export markets: Exporters, particularly small artisans FPOs and handicraft producers, have trouble accessing international markets due to lack of awareness and hence depend on the traders from different states and Kolkata which not only denies direct export but also fetches low price. The artisans and FPOs need training even in the basic business functions and upkeep.
- Limited access to formal credit: Given the backwardness and lack business potential formal credit system is lacking in this district.
- Weak export strategy: Though government initiatives exist to boost exports, there are gaps in the district-level execution of a robust strategy for products with high export potential, such as Sal leaf made products, medicinal extracts from Mahua flower and other forest produces. The SEFC should make specific interventions to implement the district level initiatives.

Operational and Environmental challenges

- Climate change impacts: Irregular rainfall, drought and humid conditions pose significant risks to both agriculture and forest produces. Unpredictable weather directly disrupts crop yields.
- Though there are no proper storage facilities available in the district for the agricultural and forest produces.

15.GIST OF THE ANALYSIS

The following are the salient points which emerge from the above discussions:

- The major exports (99%) of the district is contributed by natural resources based on silica and manganese. There no significant products or scales are available for exports from the district.
- Opportunities for exports of agricultural and forest products are bright but needs to be explored with targeted approach.
- The district has insufficient warehouse and cold storage facilities for agricultural and forest products..
- Several units located in the clusters are majorly acting as feeder units for MSMEs located in paschim medinipur district.

16.EXPORT ACTION PLAN SUGGESTED

Based on the above facts, analysis of the data and the input from the stakeholders, the following action plan is suggested. The action plan also indicates the desired output of the strategic actions, the responsible agency and the proposed intervention/tool for implementation. It has also been highlighted the activity/activities where a DPR may be required.

Category	Strategic Action	Output Desired	Suggested Agency	Instrument/Intervention
	Establishment of CFCs for Sal leaves and mahua flower based products	Utilization of forest produces for exports	State Govt	The DIC may prepare a proposal for establishing such CFC along with the relevant FPOs.

	Establishment of Warehouse and Cold Storage facilities for agricultural and forest produces	To address the seasonality of the products and scale for meeting the demands.	State Govt	The State and central warehousing corporations may take the initiative and commit investments in the district.
	Handholding for direct exports of MSMEs	Increased direct exports from the state	State Govt + GoI	Use acceleration services by institutions like IIFT under suitable schemes. The State Govt. may also launch export incubation fund for supporting the Direct Exports.
	Training on effective practices and packaging for MSME handicraft producers, majorly Sal leaf based products and Sabai grass based products.	Improved productivity and market reach	State Govt.	The Ministry of MSME&T may take up suitable training facilities for the MSMEs and SHGs with expert agencies. Similarly a suitable facilitation for packing and packaging practices may be arranged by the Dept. of MSME. The products identified for the same includes copper handicrafts, human hair, vegetable and other horticultural products including flowers.
	Product and district specific capacity building on exports of MSMEs	Direct exports from MSMEs to diverse markets	State Government	The existing SEFC should undertake time bound product and district specific capacity building of MSMEs in handicrafts, Shrimp and human hair products.

17.ANNEXURE

Table A 1: District Level Officers

Name	Designation	Phone No.	Email	Office Address
Sri Sunil Agarwala, WBCS(Exe)	District Magistrate & Collector	03221-25791 5	dm-jhargram-wb@go v.in / jhargramdm@gmail. com	O/o District Magistrate & Collector, Jhargram District, PIN 721507 (Jhargram , Jhargram)
Sri Lakshmana Perumal R., IAS	Additional District Magistrate (Land & Revenue)	7719364409	–	–
Sri Dileep Mishra, IAS	Additional District Magistrate (Zilla Parishad)	9732382281	–	–
Sri Gobinda Dutta, WBCS(Exe)	Additional District Magistrate (General)	7719364401	–	–
Sri Prasenjit Chakraborty, WBCS(Exe)	Additional District Magistrate (Development)	7719364501	–	–

Table A 2: Block Development Officers

Name	Designation	Phone
Shri Anal Sarker, WBCS (Exe)	BDO, Binpur-I	8348691757
Sri Suman Ghosh, WBCS(Exe)	BDO, Binpur-II	8348691758
Sri Shyam Sundar Mishra, WBCS (Exe)	BDO,Gopiballavpur-I	8348691753
Nilatpal Chakraborty, WBCS (Exe)	BDO, Gopiballvapur-II	8348691754
Sri Debabrata Jana, WBCS(Exe)	BDO, Jamboni	8348691755
Joy Amed, WBCS (Exe)	BDO, Jhargram	7719364428
Sri Santanu Sarkar, WBCS (Exe)	BDO, Nayagram	8348691752
Shri Rohon Ghosh, WBCS (Exe)	BDO, Sankrail	7719364427

Table A 3: Subdivision & Blocks

Block (CD Block)	Subdivision	Gram Panchayats
Gopiballavpur-I	Jhargram Sub-division	7
Gopiballavpur-II	Jhargram Sub-division	7
Nayagram	Jhargram Sub-division	10
Jhargram	Jhargram Sub-division	13
Sankrail	Jhargram Sub-division	10
Binpur-I	Jhargram Sub-division	10
Binpur-II	Jhargram Sub-division	10
Jamboni	Jhargram Sub-division	10

Table A 4: Jhargram Division

SL	Category Name	Road Name	Length (in Km)
1	Major District Road	Bridge approaches at Barjeebanpur, Debra - Sabang Road	0.6
2	Other District Road	C.D.P. Road (Old Settlement more to Jhargram)	1
3	State Highway	Contai - Belda Road (33.60 kmp to 35.00 km) SH 1.40	1.4
4	Other District Road	Dubrajpur Pukuria Road	4.4
5	Major District Road	Guptamani Sankrail Kultikri Road	22
6	Major District Road	Jhargram Bandhgora Road	6.5
7	Major District Road	Jhargram Jamboni Road	11
8	Other District Road	Jhargram Link Road	1
9	Other District Road	Jhargram Railway Station Road	0.32
10	Major District Road	Jhargram Tenga Road	2.3
11	Major District Road	Kadam Kanan Level Crossing to LDK Road via Kanchan Oil Industry (Known as RAK Road)	2.52
12	Major District Road	Keshiary Kulbani Road	14.1
13	State Highway	Keshiary Nayagram Road	11
14	Other District Road	Link Road between Jhargram Jamboni Road and Parihati Jamboni Fekoghat Road	3.5
15	State Highway	Lodhasuli Dahijuri Kupannadi Road (0.00 kmp to 21.00 kmp and 36.40 km to 39.00 kmp)	23.6
16	Major District Road	Lodhasuli Dahijuri Kupannadi Road (21.00 kmp to 36.40 km and 39.00 kmp to 42.00 kmp)	18.4
17	Other District Road	P.W.D I.B to Forest Range Office	0.16
18	State Highway	Parihati Jamboni Fekoghat Road	26.4

19	Other District Road	Principal Road	1
20	Other District Road	S.D.O Office to Rabindra Park Road	0.17
21	Other District Road	Sub Correctional Home to Hospital	0.33
22	Major District Road	Subhas Statue to Shib Mandir Road	0.21

Table A 5: Jhargram Highway Division

SL.	Category Name	Road Name	Length (in Km)
1	State Highway	Banspahari - Paradi Road	3.5
2	State Highway	Belpahari Banspahari Road	23.8
3	Major District Road	Dahijuri - Lalgarh Road	11.35
4	State Highway	Dahijuri Binpur Silda Hatiary Road	31.5
5	State Highway	Dharsa Belpahari Road	16.3
6	Major District Road	Dudhkundi Manikpara Sardaha Bombay Road (Length 6.00 m) with a link from Manikpara to Bombay Road (Balibhasa) (2.25 km)	8.25
7	State Highway	Gopiballavpur Fekoghat Road	12
8	Major District Road	Gopiballavpur Hatibari Road	20
9	State Highway	Gopiballavpur Nayagram Road	42
10	Major District Road	Hatigeria Kultikri Rohini Rogra Road	25.35
11	Major District Road	Jhargram Sevayatan Baita Dheruaghat Road	12
12	Major District Road	Kalaberia Pirakata Dhansole Lalgarh Road (28.00 to 35.00 kmp)	7
13	Major District Road	Kharikamathani Dhumsai Road	20
14	Major District Road	Lalgarh Ramgarh Road	15
15	Major District Road	Link road from Kalaberia - Pirakata - Dhansole - Lalgarh to Lalgarh Bridge	1.05
16	Major District Road	Lodhasuli Rogra Road	20.7
17	Other District Road	Manikpara Khalsuli Road	10
18	State Highway	Narayanpur Silda Link Road	2.15
19	Major District Road	Ramgarh Pingboni Road	6.7

Source: <https://pwd.wb.gov.in/roads>

Table A 6: Agricultural Production Data

Crop	2022 - 2023		
	Area (Hectare)	Yield (Ton./Ha.)	Production (Tonnes)
Rice	177645	2.84	503728
Potato	5,174.00	28.64	148,164.00
Sugarcane	1477	87.09	128639
Ground Nut	4505	1.82	8210
Maize	2322	2.97	6894
Sesamum	7235	0.93	6722
Repeseed & Mustard	6135	0.95	5829
Masoor	2159	1.83	3959
Khesari	1855	1.26	2340
Moong	2176	0.6	1303
Wheat	421	2.43	1022
Urad	877	0.67	585
Gram	376	1.47	552
Peas & Beans	263	2.03	533
Sunflower	318	1.59	507
Arhar / Tur	103	1.2	131
Sannhamp	35	1.91	67
Horse - Gram	102	0.65	66
Mesta	11	4.36	48

Source: <https://data.desagri.gov.in/website/crops-apy-report-web>

Vegetables:**Table A 7 : Vegetables Production of Jhargram**

Name	Area in (Thousand ha)	Production (2023-24)	Unit
Brinjal	2.977	54.750	Thousand MT
Ladies Finger	1.636	20.230	
Cabbage	0.650	16.645	
Cauliflower	0.725	15.860	
Other Cucurbits	1.705	15.718	
Tomato	1.114	15.640	
Watermelon	0.965	14.786	
Elephants Foot Yam	0.605	13.235	
Arum	0.611	11.816	
Onion	0.772	10.835	
Radish	0.632	9.582	
Other Vegetables	0.875	8.896	
pumpkin	0.559	8.760	
Cucumber	0.547	7.016	
Pointed Gourd	0.558	6.300	
Sweet Potato	0.069	0.576	
Beans	1.118	2.493	
Green Chili	0.714	2.126	
Bottle gourd	0.259	2.098	

Peas	0.332	1.896	
Carrot	0.019	0.252	
Capsicum	0.005	0.108	
All Vegetables	16.905	239.812	

Source: “[Report from the Directorate of Horticulture Dept. of FPI & H, Govt. of W.B.](#)”

Fruits:

Table A 8 : Fruits Production of Jhargram

Name	Area in (Thousand ha)	Production (2023-24)	Unit
Mango	3.607	28.810	Thousand MT
Other Citrus	1.165	6.760	
Banana	0.443	9.369	
Guava	0.435	4.063	
Papaya	0.225	3.505	
Jack Fruit	0.133	1.496	
All Fruits	6.260	50.654	

Source:

“https://wbfpjh.wb.gov.in/assets/user_uploads/directorate_fpi/897697431_1728034834.pdf”

Flowers:

Table A 9 : Flowers Production of Jhargram

Name	Area in (Thousand ha)	Production (2023-24)	Unit
-------------	------------------------------	-----------------------------	-------------

Gladiolus	0.031	0.436	Crore Sticks
Marigold	0.018	0.107	Thousand MT
Tuberose	0.006	0.097	Crore Sticks
Rose	0.181	0.091	Crore Sticks
Total Loose Flower	0.083	0.187	Thousand MT
Total Cut Flower	0.219	0.659	Thousand MT
All Flowers	0.302	0.187 (Th. MT) & 0.559 (Cr. Cut Flowers)	

Source: "[Report from the Directorate of Horticulture Dept. of FPI & H, Govt. of W.B.](#)"

Industries in Jhargram

There are some industries in Jhargram, and the details are provided below:

Boiler-Related Industries

- Solid fuel fired boiler / Thermic Fluid Heater (TFH) – regardless of capacity – (01)
- Oil/gas fired boiler >5 TPH – (01)
- Oil/gas fired boiler not covered under any other category – (04)

High-Impact Industries

- Asbestos and asbestos-based industries – (02)
- Cement manufacturing – (02)
- Fermentation industry (yeast, beer, ENA) – (01)
- Fertilizer (basic manufacturing) – (01)
- Oil refineries (mineral/petro-based) – (01)
- Iron & Steel (ore processing, sponge iron, integrated plants) – (06)

Agro and Food Processing

- Parboiled Rice Mills – (23)
- Cashew nut processing – (03)
- Flour mills (dry process) – (09)
- Vegetable oils with wastewater generation ≥ 100 KLD – (01)

Plastic, Rubber, and Detergents

- Reprocessing of waste plastic including PVC – (01)
- Rubber goods (with gas baby boiler) – (01)
- Synthetic detergent formulation – (04)
- Synthetic rubber and rubber waste reclamation – (01)

Textile and Wood Processing

- Textile/Yarn processing involving dyeing, bleaching, etc. – (01)
- Carpentry & wooden furniture using motorized tools – (01)
- Saw mills – (31)

Mining and Mineral Industries

- Dry coal, mineral processing, ore sintering, grinding – (02)
- Mining and ore beneficiation – (01)
- Sand/riverbed mining (>5 ha or cluster mining) – (05, 07)

Construction Materials and Miscellaneous

- Brickfields (excluding fly ash brick with lime) – (09)
- Fly ash bricks/block manufacturing – (01)
- Fly ash export, transport, disposal – (01)
- Stone crushers – (01)
- Emery powder manufacturing – (01)

Miscellaneous

- Metal extraction and smelting (ferrous/non-ferrous, >1MT/hr) – (01)
- Fertilizer (granulation, blending, formulation only) – (01)
- Soap manufacturing (handmade, no boiler) – (01)

- Mineralized water production – (02)
- Oil mills (Ghani extraction, no refining) – (04)

Source: https://ocmms.nic.in/OCMMS_NEW/getIndustryData.

Table A 10: List of MSME Clusters

Cluster Category	Name Of Cluster	No. Of Units	No. Of Employees
Clay & Ceramic	Dangikusum Stone Curving Cluster And Reh Industrial Cooperative Society Ltd	29	52
Wooden Furniture & Allied Products	Wooden Furniture Cluster Of Beliaberah Under Gopiballavpur Ii Block	15	35
Metal Fabrication & Furniture	Khasjungle Dharampur Blacksmithy Cluster Industrial Cooperative Society Ltd.	37	78
Jute & Other Fibre Based Products	Centre Of Execcellance	1	5680

Source: Wb.msme.gov.in

Cluster Name	Technical Agency	Implementing Agency	Agency Name	No. of Artisans
Jangal Mahal Tasar Cluster	Tasar Development Foundation	Professional Assistance for Development	IMEDF	997

Table A 11 : Details of Banking Profiles

Banking Profile										
District:	Jhargram			State:	West Bengal			Lead Bank:	PNB	
1. NETWORK & OUTREACH (As on 31/03/2023)										
Agency	No. of Banks/Soc.	No. of Branches				No. of Non-Formal Agencies Associated			Per Branch Outreach	
		Total	Rural	Semi-urban	Urban	mFIs/mPOs	SHGs/JLGs	BCs/BFs	Villages	Households
Commercial Banks	15	80	--	--	--	--	--	294	n/a	n/a
Regional Rural Banks	1	7	--	--	--	--	--	19	n/a	n/a
District Central Coop Banks	1	10	--	--	--	--	--	0	n/a	n/a
Coop. Agr. & Rural Dev. Bank	1	1	--	--	--	--	--	0	n/a	n/a
Primary Agr. Coop. Society	125	125	--	--	--	--	--	0	n/a	n/a
Others	0	0	--	--	--	--	--	0	n/a	n/a
All Agencies	141	223	--	--	--	--	--	313	n/a	n/a
2. DEPOSITS OUTSTANDING										
Agency	No. of accounts					Amount of Deposit (₹ lakh)				
	31 Mar 21	31 Mar 22	31 Mar 23	Growth (%)	Share (%)	31 Mar 21	31 Mar 22	31 Mar 23	Growth (%)	Share (%)
Commercial Banks	n/a	n/a	n/a	n/a	n/a	30125.00	25125.00	41222.00	37.1%	89.8%
Regional Rural Banks	n/a	n/a	n/a	n/a	n/a	3773.00	1293.00	1475.00	11.1%	3.1%
Cooperative Banks	n/a	n/a	n/a	n/a	n/a	40870.00	30471.00	32171.00	-17.0%	69.6%
Others	n/a	n/a	n/a	n/a	n/a	0.00	0.00	0.00	0.0%	0.0%
All Agencies	n/a	n/a	n/a	n/a	n/a	44373.00	41222.00	45243.00	0.6%	100.0%
3. LOANS & ADVANCES OUTSTANDING										
Agency	No. of accounts					Amount of Loan (₹ lakh)				
	31 Mar 21	31 Mar 22	31 Mar 23	Growth (%)	Share (%)	31 Mar 21	31 Mar 22	31 Mar 23	Growth (%)	Share (%)
Commercial Banks	n/a	n/a	n/a	n/a	n/a	145823.00	147994.00	172022.00	18.2%	87.3%
Regional Rural Banks	n/a	n/a	n/a	n/a	n/a	582.00	6110.00	6228.00	8.8%	3.3%
Cooperative Banks	n/a	n/a	n/a	n/a	n/a	22570.00	19811.00	17168.00	-14.1%	8.7%
Others	n/a	n/a	n/a	n/a	n/a	0.00	0.00	0.00	0.0%	0.0%
All Agencies	n/a	n/a	n/a	n/a	n/a	178975.00	169220.00	197243.00	1.4%	100.0%
4. CD-RATIO										
Agency	CD Ratio									
	31 Mar 21	31 Mar 22	31 Mar 23							
Commercial Banks	98.27	99.85	41.24							
Regional Rural Banks	42.67	47.23	45.42							
Cooperative Banks	96.32	99.58	92.08							
Others	N/A	N/A	N/A							
All Agencies	49.25	49.42	42.15							
5. PERFORMANCE UNDER FINANCIAL INCLUSION (No. of A/es)										
Agency	Cumulative up to 31 Mar 2023									
	PMLJN	PMSEY	PMLJEY							
Commercial Banks	n/a	n/a	n/a							
Regional Rural Banks	n/a	n/a	n/a							
Cooperative Banks	n/a	n/a	n/a							
Others	n/a	n/a	n/a							
All Agencies	202432	143323	45114							
6. PERFORMANCE TO FULFIL NATIONAL GOALS (As on 31/03/2023)										
Agency	Priority Sector Loans		Loans to Agri. Sector		Loans to Weaker Sections		Loans under DRI Scheme		Loans to Women	
	Amount (₹ lakh)	% of Total Loans	Amount (₹ lakh)	% of Total Loans	Amount (₹ lakh)	% of Total Loans	Amount (₹ lakh)	% of Total Loans	Amount (₹ lakh)	% of Total Loans
Commercial Banks	106889.00	82.2%	37110.00	8.1%	n/a	n/a	n/a	n/a	n/a	n/a
Regional Rural Banks	5299.00	4.5%	4484.00	8.2%	n/a	n/a	n/a	n/a	n/a	n/a
Cooperative Banks	16447.00	12.8%	3716.00	12.4%	n/a	n/a	n/a	n/a	n/a	n/a
Others	0.00	0.00%	0.00	0.00%	n/a	n/a	n/a	n/a	n/a	n/a
All Agencies	128935.00	100.0%	79320.00	100.0%	n/a	n/a	n/a	n/a	n/a	n/a
7. AGENCY-WISE PERFORMANCE UNDER ANNUAL CREDIT PLANS										
Agency	2020-21			2021-22			2022-23			Average Ach (%) in last 3 years
	Target (₹ lakh)	Ach'ment (₹ lakh)	Ach'ment (%)	Target (₹ lakh)	Ach'ment (₹ lakh)	Ach'ment (%)	Target (₹ lakh)	Ach'ment (₹ lakh)	Ach'ment (%)	
Commercial Banks	34573.20	n/a	n/a	39450.80	3786.00	22.17%	26988.00	10989.00	22.9%	n/a
Regional Rural Banks	22916.80	n/a	n/a	3689.02	5076.00	14.24%	4689.00	5299.00	11.0%	n/a
Cooperative Banks	24975.50	n/a	n/a	28988.24	5251.00	32.05%	35106.00	16447.00	46.8%	n/a
Others	1000.00	n/a	n/a	0.00	0.00	0.0%	0.00	0.00	0.0%	n/a
All Agencies	394274.00	394448.00	77%	45720.00	33243.00	22.10%	54879.00	12893.00	23.34%	38.04%
8. SECTOR-WISE PERFORMANCE UNDER ANNUAL CREDIT PLANS										
Broad Sector	2020-21			2021-22			2022-23			Average Ach (%) in last 3 years
	Target (₹ lakh)	Ach'ment (₹ lakh)	Ach'ment (%)	Target (₹ lakh)	Ach'ment (₹ lakh)	Ach'ment (%)	Target (₹ lakh)	Ach'ment (₹ lakh)	Ach'ment (%)	
Crop Loan	9986.15	n/a	n/a	10980.00	n/a	n/a	n/a	n/a	n/a	n/a
Term Loan (Agri)	8484.85	n/a	n/a	10270.12	n/a	n/a	n/a	n/a	n/a	n/a
Total Agri. Credit	38105.00	33212.00	72%	21231.12	4796.00	22.5%	27843.00	7029.00	25.2%	37.0%
MSME	12129.00	14690.00	92%	17438.97	2225.00	13.0%	18923.00	2641.00	13.8%	26.6%
Other Priority Sector*	60188.00	32330.00	54%	74520.00	3225.00	4.3%	80112.00	5290.00	6.6%	11.0%
Total Priority Sector	394274.00	394448.00	77%	45720.00	33243.00	22.10%	54879.00	12893.00	23.34%	38.04%
9. NPA Position (Outstanding)										
Agency	2020-21			2021-22			2022-23			Average NPA (%) in last 3 years
	Total O/S (₹ lakh)	NPA Amt. (₹ lakh)	NPA (%)	Total O/S (₹ lakh)	NPA Amt. (₹ lakh)	NPA (%)	Total O/S (₹ lakh)	NPA Amt. (₹ lakh)	NPA (%)	
Commercial Banks	n/a	n/a	n/a	n/a	n/a	n/a	n/a	n/a	n/a	n/a
Regional Rural Banks	n/a	n/a	n/a	n/a	n/a	n/a	n/a	n/a	n/a	n/a
Cooperative Banks	n/a	n/a	n/a	n/a	n/a	n/a	n/a	n/a	n/a	n/a
Others	n/a	n/a	n/a	n/a	n/a	n/a	n/a	n/a	n/a	n/a
All Agencies	n/a	n/a	n/a	n/a	n/a	n/a	n/a	n/a	n/a	n/a

*O/S includes In part Credit, Education, Housing, Social Infrastructure, Renewable Energy; includes Paschim Medinipur & Jhargram

Source: Lead Bank and SLEC

N/A : Not applicable n/a : Data not available

Source: <https://www.nabard.org/>

Table A 12 : Products Exported From Jhargram

ITCHS Code	Item_Desc	Sum of Value (INR)
72023000	FERRO-SILICO-MANGANESE	409445104
72031000	FERS PRDCTOBTND BY DRCTR DCTN OF IRON ORE	51347416
72024100	FERRO-CHROMIUM CARBON CONTNG>4% BY WT	2302116
63041910	BEDSHEETS AND BED COVERS OF COTTON	591284
25061020	QUARTZ, POWDER	545160
90261020	GAUGS LVL(LVL INDICATORS AND LVL REGULATORS)	227629
90318000	OTHR MSRNGANDCHCKNG INSTRMNTS,APPLNCSANDMCHNS	70655

Source: <https://dashboard.commerce.gov.in/commercedashboard.aspx>

Table A 13: FGD Report of Paschim Medinipur

Section A		
Districts Covered	Date	Duration
Paschim Medinipur & Jhargram	18.07.2025	1.30 PM - 4.30 PM
No. of participants		
Total		90
Entrepreneurs / Association/Cooperation/Chamber of commerce		82
Trade Facilitation Institution		5
Government Stakeholders		1
		2
IIFT Team Participant	5	
Mr. Raktim Mitra		
Ms. Tina Majumder		

Section B

Products				
Sabui & Babui Handicrafts	PotChitra	Copper Ornaments	Mat Products	Text Print (Hossiey - Bed Sheets)
Steel Fabrication	Steel Furniture	Rice	Jute Products	

Salient Inputs from the FGD					
Products	Physical Infra Core	Physical Infa Support	Soft Infrastructure	Others	Activities
			Marketing Assistance to Sabui & Babui Handicrafts Cluster		Marketing expert to be assigned - to be included in ZEHAP
			Requirement of Handholding for the Handicrafts Products - Export Awareness, Marketing, etc		Standalone for SEFC - Morehandholding and reach
			Handholding required for Pricing Strategy (Price Competitiveness) & Marketing Assistance & Packaging Knowledge for Copper Ornaments		One / Two days Handholding Export Training Camp is required
	Display Unit required for Sabui Babui Handicrafts, PotChitra, Copper Ornaments				to be included in ZEHAP for DPR

	Packaging for Handicrafts Products required				to be included in ZEHAP for DPR
		Custom Unit in Postal Division with DNK	Proper Packaging like Bubble wrapping for Handicrafts item		To be done by Indian Post will be added in ZEHAP

<i>Facilities Available</i>		
Jhargram	Clusters in Working Mode	Sabui & Babui Grass Handicrafts
		Pottery Cluster
		Stone Carving