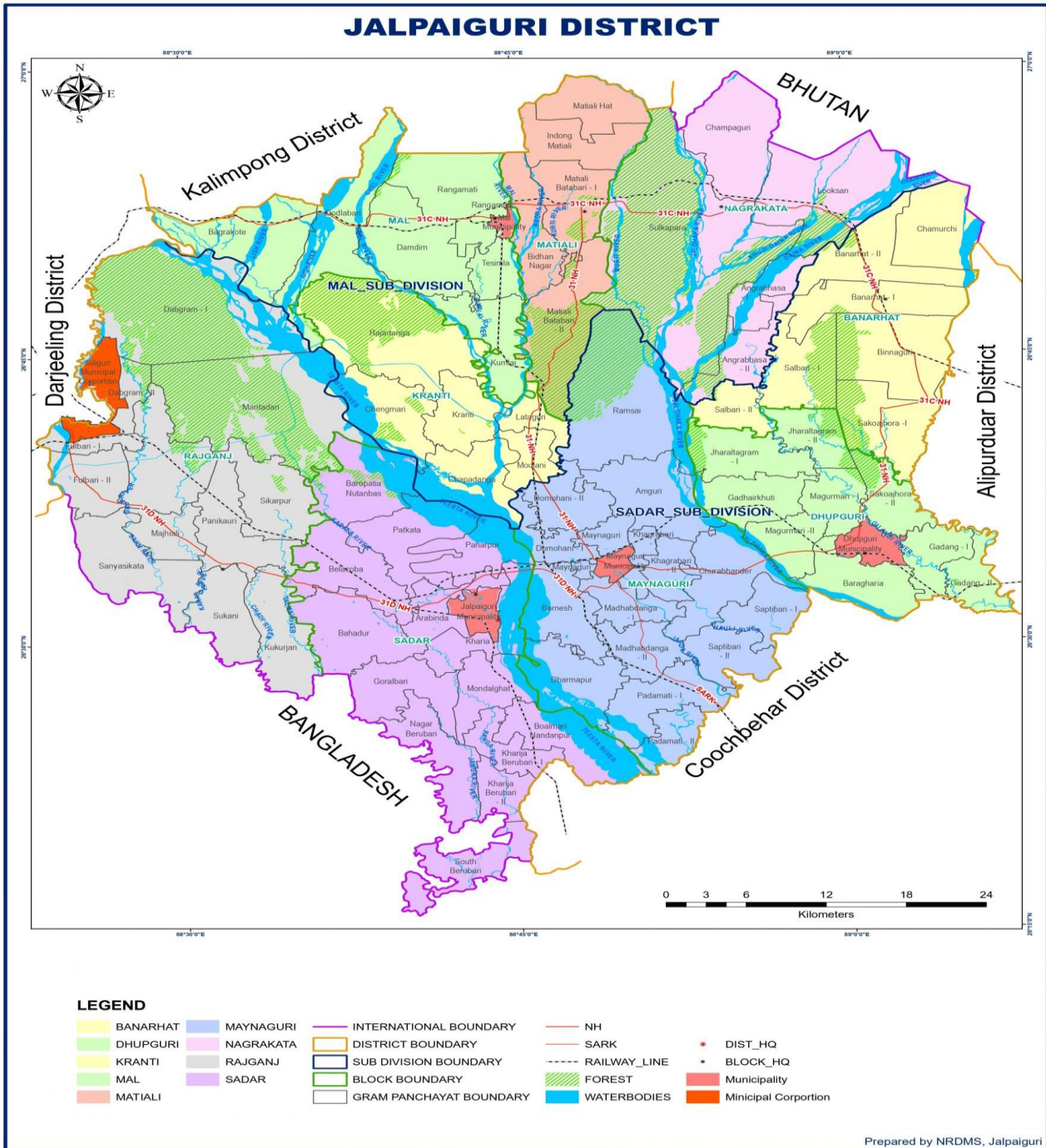


DISTRICT PROFILE

JALPAIGURI



1. INTRODUCTION

Jalpaiguri is a picturesque district located in the northern part of the Indian state of West Bengal. Located in the northern part of West Bengal, Jalpaiguri is a key contributor to the region's export landscape. Strategically positioned near international borders with Bhutan and Bangladesh, and well-connected to the northeastern states, Jalpaiguri serves as a vital trade gateway.

The district is renowned for its premium tea production, particularly the Dooars tea, which holds significant demand in both domestic and international markets. In addition to tea, the district is also traditionally known for quality agro-based products, handicrafts, and forest-based goods.

With growing infrastructure, including proximity to the Inland Container Depot (ICD) in Siliguri and improved road-rail connectivity, Jalpaiguri is emerging as an important hub for export-oriented economic activities in North Bengal. It is noteworthy that, the export basket of the district is quite different than its production basket, with significant relative importance on Petro-chemical products.

Known for its rich natural resources, the district boasts lush tea gardens, dense forests, and major rivers like the Teesta and Torsa. Jalpaiguri plays a vital role in the state's economy through agriculture, tea production, and tourism. It is also home to diverse communities and cultures, making it a unique blend of tradition and modernity.

2. CLIMATE CONDITIONS

In Jalpaiguri, the wet season is hot, oppressive, and mostly cloudy and the dry season is warm and clear. Over the course of the year, the temperature typically varies from 52°F to 99°F and is rarely below 48°F or above 106°F.¹

¹ Data taken from [Weather Spark](#)

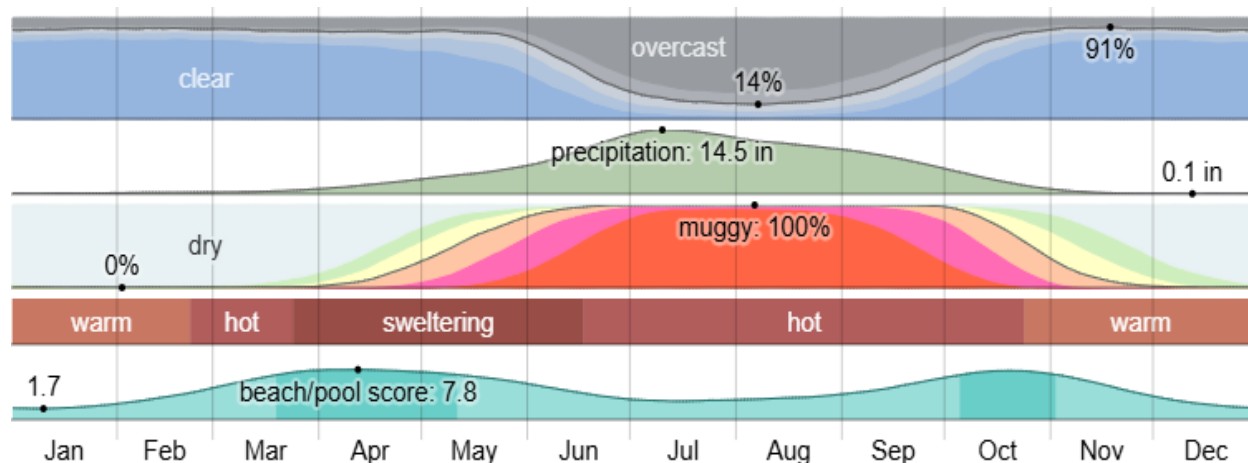


Fig 1: Climate conditions of Jalpaiguri

Source: Weather Spark

3. ADMINISTRATIVE PROFILE

The administrative order of the district is maintained by the District Magistrate cum Collector. Under the District magistrate's Office, there are three Sub-divisions, Jalpaiguri, Dhupguri and Mal. In total, they have 9 Blocks under them.

The distribution of administrative order in the district is depicted as follows,

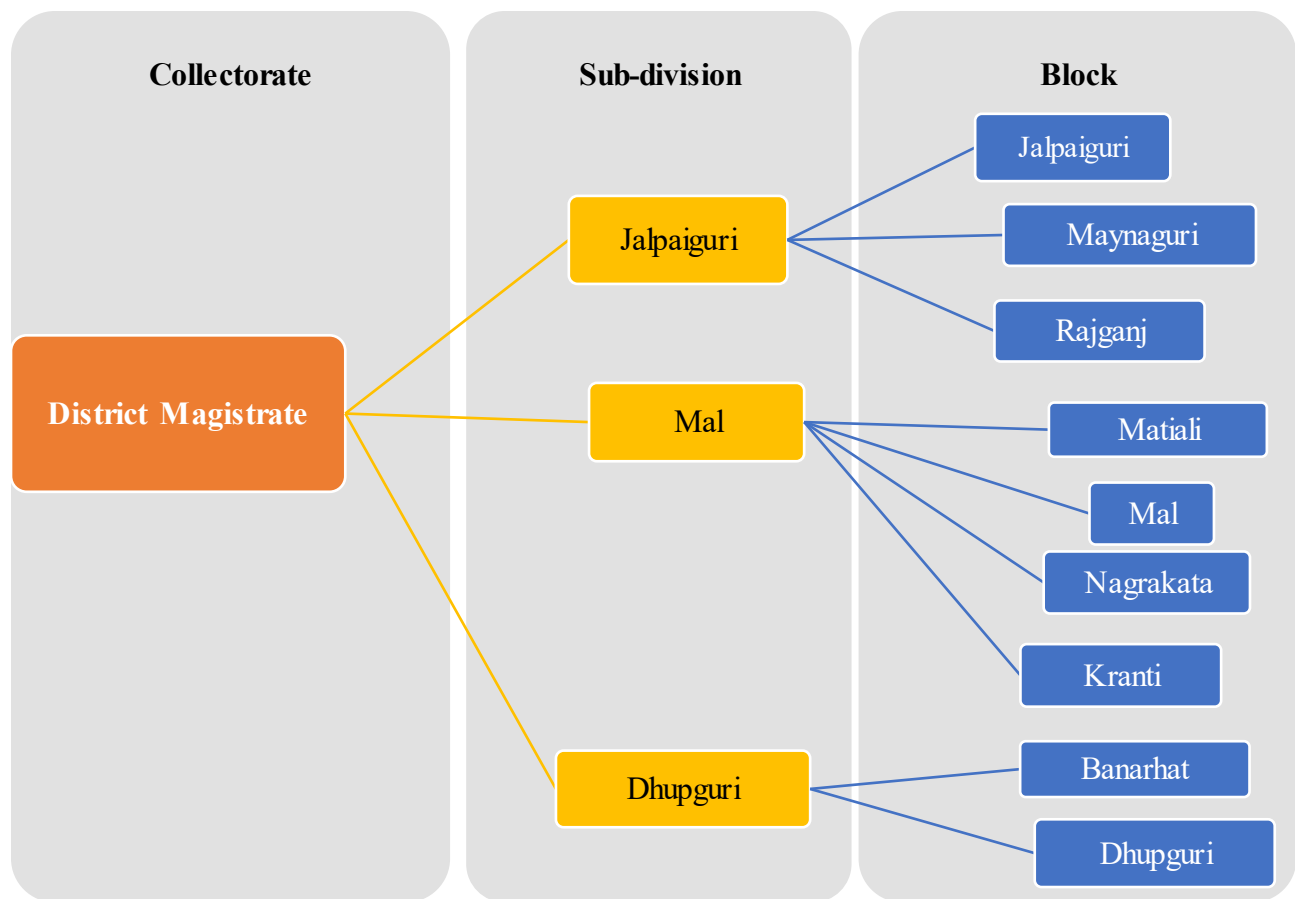


Fig 2 Administrative Structure of Jalpaiguri District

4. LOCATION AND GEOGRAPHY

The district enjoys a strategically important location as it serves as a corridor of trade and communication with the various north-eastern States of India. It stretches between 26°15'47" & 26°59'34" N Latitude 88°23'2" & 89°07'30" E Longitude. It touches the boundaries of Bhutan and Darjeeling in the north, Assam (Goalpara) in the east, Coochbihar in the south and Bangladesh in the south-west. The district topography wears a mixed look – consisting of both hilly areas and undulating plains coupled with vast flat plains.

Three district physiographic units can be identified in the district the northern hilly terrain which is a part of the sub-Himalayan Ranges, the sub-montane central tract, locally called Bhabar and

the gently sloping alluvial plain in the south locally called Terai. Teesta, Karala, and Jaldhaka are the major rivers of the district. ²

5. DEMOGRAPHY

The total population of Jalpaihuri is 38.73 lakh. About 72% amongst them are rural. The rest of 28%, i.e. 10.60 lakh people are urban. Among the rural people, 13.75 lakh (48.9%) are females. The rural females here, enjoy the literacy rate of about 54%. The urban sex ratio here is, about 943 females per thousand men.

40% of the rural population participate in the work force, whereas, that figure for the urban population is 37%.

Table 1 Population Distribution of Jalpaiguri

Unit: People in Lakhs

Parameters	Total	Rural	Urban
Number of Households	8.68	6.25	2.43
Total Population (Persons)	38.73	28.12	10.60
Total Population (Males)	19.83	14.37	5.46
Total Population (Females)	18.90	13.75	5.15
Literates (Persons)	24.99	17.16	7.82
Literates (Males)	13.97	9.72	4.24
Literates (Females)	11.02	7.44	3.58
Total Workers (Persons)	15.13	11.23	3.90
Total Workers (Males)	10.91	7.78	3.13
Total Workers (Females)	4.22	3.45	0.77
Agricultural Labourers	3.50	3.33	0.16
Workers in Household Industries	0.30	0.20	0.10

Source: Census 2011

² Brief Industrial Profile of Jalpaiguri District by MSME

6. LOGISTIC INFRASTRUCTURE PROFILE

Jalpaiguri district, located in North Bengal, has a well-developed logistics network supported by its strategic position near the India-Bhutan border and proximity to Siliguri.

Jalpaiguri district's major logistical hubs include **Jalpaiguri town** (the district headquarters) for administration and connectivity; **Malbazar** as a gateway to the Dooars' tea & forest regions; **Dhupguri** serving larger rural hinterlands; and **Maynaguri**, which is smaller but acts as a key service node.

The major modes of transportation in the district are,

Roadways

Jalpaiguri has a vital roadway network, that serves the state and the country with a connectivity to northeastern regions of the country and beyond.

Jalpaiguri has several national highways running through it,

- **NH 10:** The highway starting from Indo/ Bangladesh Border connecting Fulbari Siliguri in the State of West Bengal connecting Sivok, Kalimpong near N.H-10 and terminating at Gangtok in the State of Sikkim.
- **NH 27:** The highway starting from Porbandar in the State of Gujarat connecting Bamanbore, Morvi, Samakhiali, Radhanpur, Palanpur in the State of Gujarat, Pindwara Udaipur, Mangarwar, Chittaurgarh, Kota, Baran in the State of Rajasthan, Shivpuri, Ganj, in the State of Madhya Pradesh, Jhansi, Kanpur, Lucknow, Faizabad, Gorakhpur in Uttar Pradesh Gopalganj, Pipra Kothi, Muzaffarpur, Darbhanga, Forbesganj, Araria, Purnia, in the State of Bihar, Dalkola, Islampur, Shiliguri, Jalpaiguri, Mainaguri, Dhupgari, Falakata, Sonapur, Salsabari in the State of West Bengal, Bongaigaon, Bijini, Patacharkuchi, Nalbari, Dishpur, Nagaon, Lumding, Haflong and terminating at its junction with NH-37 near Silchar in the State of Assam.
- **NH 327:** The highway starting from its junction with NH-27 near Bagdogra connecting Naksal Bari and terminating at Galgalia in the State of West Bengal.
- **NH 17:** The highway starting from its junction with NH-10 near Sivok connecting Bagrakot, Chalsa, Nagarkata, Goyerkata, Birpara, Falakata, Sonarpur, Koch-Bihar,

Tufanganj in the State of West Bengal, Golakganj, Bilasipara-North Salmara, Goalpara, Boko and terminating at its junction with NH-27 near Guwahati in the State of Assam.³

Railways

Jalpaiguri district is a critical railway hub in North Bengal, primarily served by the **Northeast Frontier Railway (NFR) zone** and featuring key projects to enhance connectivity and station infrastructure.

Key Railway Infrastructure

- **New Jalpaiguri Junction (NJP):** The largest and busiest railway station in North Bengal, serving as the primary gateway to the North-Eastern states, Sikkim, and neighboring countries like Nepal, Bhutan, and Bangladesh.
 - It is an A1 category station with both broad-gauge and narrow-gauge lines.
 - Major lines include the Howrah–New Jalpaiguri line, the New Jalpaiguri–Alipurduar–Samuktala Road line (passing through the scenic Dooars region), the Haldibari–New Jalpaiguri line, and the Barauni–Guwahati line.
- **Other Important Stations:** The district also contains other important stations such as Jalpaiguri Road (JPE), Jalpaiguri (JPG), Siliguri Junction, New Mal Junction, and Binnaguri Junction, which cater to local and long-distance traffic.
- **International Connectivity:** The Mitali Express, an international express train service, runs between New Jalpaiguri and Dhaka Cantonment in Bangladesh⁴.

Air

The Bagdogra Airport (IXB) is one of the major domestic and international airport in India with direct flights to Kolkata, Delhi and Guwahati among others. It is located about 55 km from the city of Jalpaiguri and 16 km from the twin city of Siliguri. With a number of airlines carrying numerous tourists and general passengers, it has become an extremely important airport for people visiting Jalpaiguri. There are also helicopter flights which take off from the airport's aerodrome to the town of Gangtok.

³ Information gathered from [West Bengal Highway Development Corporation Limited](#) and [Ministry of Road Transport and Highways](#)

⁴ Data compiled from Indian Railways

Bagdogra Airport: Freight & Logistics Infrastructure

Basic airport specs (road / airside relevant)

- Location: Near Siliguri, West Bengal; serves North Bengal and nearby states.
- Runway: Single runway 18/36, length ~2,754 meters (~9,035 ft), concrete / asphalt surface. Suitable for narrow-body aircraft like A320, B737 etc.
- Customs status: It is a *customs airport*. That means import/export procedures are possible, which is essential for international freight.

Existing freight / cargo / perishable infrastructure

- **Centre for Perishable Cargo (CPC):** There is a CPC being developed adjacent to Bagdogra by Siliguri-Jalpaiguri Development Authority (SJDA), with APEDA & ASIDE funding. Purpose is to serve fresh fruits, vegetables, flowers etc.
 - Project area: about **3 acres**.
 - Cost: ~ ₹ 6.40 crore (~ Rs 6,40,10,000) for the initial CPC, with some funds for approach road etc.
 - Management: The facility will be handed to AAI/AAICLAS for operation & maintenance, which is helpful for integrating with airport operations.
- **Cargo storage / cold storage facility:** A perishable cargo storage facility, adjacent to Bagdogra Airport, was built back in ~2010 by SJDA on ~3.91 acres (≈ 1.58 hectares) at cost ~ Rs 6.68 crore.
 - However: It was not operational initially due to missing permissions / licenses; cooling / AC systems became defunct for some period.
 - Recent developments: AAI has agreed to take over its maintenance for 20 years; it is planned to be operationalised.
- **Auction / perishables market / linkage centre:** A perishable cargo complex / auction centre for local produce (pineapples etc.) was announced / planned by SJDA near Bagdogra, to help better price discovery etc.

- **Cargo tonnage / throughput:** In recent data (April 2024 – March 2025), Bagdogra handled ~ **8,952 tonnes** of cargo. Planned/upcoming expansions that affect logistics.⁵

Inland Container Depot

There is an Inland Container Depot or, dry port in the district. The port is set up on 29 acres of land in the Dabgram area near Siliguri and is the first dry port for domestic and international cargo movement in the region.

7. EXPORT INFRASTRUCTURE

Jalpaiguri's export infrastructure is centered on its strategic location as a gateway to North-East India, Bhutan, Bangladesh, and Nepal. Key facilities and initiatives include land ports, an Inland Container Depot (ICD), and industrial parks focusing on the district's primary exports of **tea**, **timber** (furniture/wood products), and **logistics services**.

Key Export Infrastructure Elements

- **Land Ports / Integrated Check Posts (ICPs):** The district has operational border infrastructure crucial for cross-border trade.
 - **Fulbari Land Port:** Located on the border with Bangladesh, near NH-27. It is an important point for general cargo and also facilitates transit of Bhutanese merchandise trade with third countries. Commodities exported include stone builder, non-basmati rice, and fruits. The Land Ports Authority of India (LPAI) is in the process of acquiring land for a full Integrated Check Post (ICP) development to upgrade facilities.
 - **New Jalpaiguri Railway Check Post:** This has been designated as an authorized Immigration Check Post to facilitate passenger and goods movement via rail between India and Bangladesh.
- **Logistics and Industrial Parks:**
 - **Siliguri Logistics Park (Inland Container Depot - ICD):** This facility, located within the Siliguri & Jalpaiguri Development Authority (SJDA) Tea Park area, serves as a crucial hub for domestic and international cargo movement. It handles

⁵ [*MilleniumPost ; Indian Infrastructure*](#)

EXIM-focused commodities like tea, meat, and pharmaceutical products, leveraging its proximity to the Nepal, Bhutan, and Bangladesh borders. The ICD Dabgram, also known as the **Siliguri Logistics Park**, is an Inland Container Depot and Private Freight Terminal in the Dabgram area of Jalpaiguri district. It is a crucial hub for domestic and international cargo movement in North Bengal and the North-East region, with Customs clearance facilities to streamline the import and export process⁶.

Land Custom Station in the district

The key Land Custom Station (LCS) in the Jalpaiguri district is the **Fulbari Land Port** on the India-Bangladesh border. While not located in Jalpaiguri, it is part of the Siliguri Customs Division, which also serves the district.

Fulbari Land Port

- **Location:** The port is in the Rajganj Community Development Block in the Jalpaiguri district, near National Highway 27. The border crossing on the Bangladeshi side is known as Banglabandha.
- **International Trade:** It facilitates cargo movement between India and Bangladesh and is also an important transit point for Bhutanese merchandise trade with third countries.
- **Exports and Imports:** Major commodities exported through Fulbari LCS include stone builders, non-basmati rice, and fruits. Imports include bricks, cotton waste, and various food products⁷.

Other Nearby Customs Stations

- **Changrabandha LCS (Cooch Behar district):** This is another major land customs station in North Bengal, bordering Bangladesh. It is also being upgraded to an ICP and serves as a significant transit point for Bhutanese trade.
- **Panitanki LCS (Darjeeling district):** Located at the India-Nepal border, Panitanki is relevant for trade with Nepal and is also connected to Bhutanese transit routes

⁶ West Bengal Industrial Infrastructure Development
Brief Industrial Profile of Jalpaiguri District

⁷ Data compiled from Land Port Authority of India

Cold Storages in the district

Jalpaiguri district has a number of cold storage facilities primarily focused on agricultural produce like potatoes. Some of the main facilities, including both private and cooperative ventures, are located in areas such as Mohitnagar, Dhupguri, and Maynaguri. According to National Horticulture Board there are 36 Cold Storages in Jalpaiguri. Amongst these only one is designed for multi-purpose usage. All of the rest are Potato storages. Jalpesh Cold Storage Pvt. Ltd. has 8, the greatest number of chambers in it. The majority of the storages have the facilities of Packaging, Drying and Grading. Further details of these storage facilities are given in Table A2, in the Annexure section.

Warehouse in the District

Jalpaiguri's warehousing options range from public storage facilities run by the Central Warehousing Corporation to private warehouses and industrial parks. Given the district's strong agricultural sector and role as a logistics hub, facilities are available for both perishable and non-perishable goods.

Government and public warehousing

- **Central Warehousing Corporation:** This is a government-owned organization operating in Raninagar of 20000 MT capacity. It provides reliable and cost-effective warehousing services for rent and is equipped with features like pest control.
- **Govt Registered warehouses:** There are four more warehouses under West Bengal Govt which are registered under Warehouse Regulatory Development Authority of total capacity 40,127 MT (Refer Table A2 in the annexure)
- **FCI Godown Raninagar:** The Food Corporation of India (FCI) operates a godown (a type of warehouse) in the Raninagar area.
- **Industrial Growth Centers:** The Rani Nagar Industrial Growth Center and the Fulbari Industrial Park offer spaces for warehouses and other industrial purposes.

8. AGRICULTUE PROFILE

The district of Jalpaiguri covers 3,386.18 Sq. KM area in total; amongst which, 2,27,440 Hectare or 2,274.4 Sq. KM area is used for agriculture, viz. 67.17 %.

The main crops of the district are, **Rice, Potato, Jute, Maize, Rapeseed & Mustard, Groundnut, Masoor, Peas & beans (Pulses), Khesari, Wheat, Urad, Sesamum, Moong (Green Gram), Niger seed, Linseed, Sugarcane, Barley, Arhar/Tur, Mesta, Gram, Horse-gram and Sunflower**. Amongst these, **Rice** is cultivated over the most area, about more than 59 % of the total area. Sunflower covers the least area of agricultural production. The name of the crops given above are in **descending order, subject to the area of cultivation**.

Production-wise, Potato is the leading crop of the district. Potato alone shares 57.58 % of the total agricultural production (18,46,974 Tonnes) of the Jalpaiguri district. **Rice** (19.65 %) and **Jute** (16.40 %) contribute significantly to the production basket of the district as well. Sunflower stays at the bottom, even for production (with a very negligible share).⁸

Crop-wise share of Production

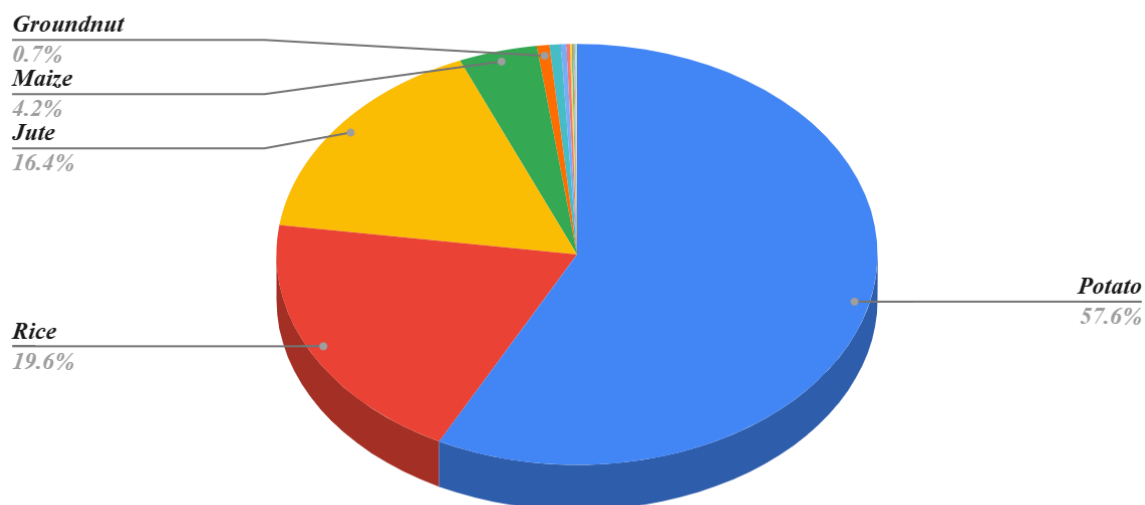


Fig 3

⁸ Data compiled from:
“[District Statistics](#)” section of the official district website of Jalpaiguri and
[Directorate of Economics and Statistics](#) .

Further details of the crops are provided in Table A3, in the Annexure section.

Horticulture Profile

Jalpaiguri district has a diverse horticultural profile owing to its fertile alluvial soil and humid climate. Floriculture is also gaining importance, with marigold, tuberose, and gladiolus being commonly cultivated. The district's agro-climatic conditions support year-round fruit and vegetable production, contributing significantly to local livelihoods and agri-based industries.

- ***Vegetables***

Brinjal is the most produced vegetable of the district, catering for almost 31% of total vegetable production, followed by Tomato, Cabbage, Ladies Finger, Cauliflower etc.

Table 2 Major Vegetable Production for Jalpaiguri

Name	Area in (Thousand ha)	Production (2023-24) [Thousand MT]
Brinjal	5.854	117.143
Tomato	1.802	44.595
Cabbage	1.767	42.65
Ladies Finger	3.275	42.58
Cauliflower	1.675	26
Total Vegetables	25.17	373.968

Source: "Report from the Directorate of Horticulture Dept. of FPI & H, Govt. of W.B."

- **Flower**

The main flowers of the district are Gladiolus and Gerbera, both having similar production figures.

Table 3 Major Flower Production for Jalpaiguri

Name	Area in (Thousand ha)	Production in Crore Sticks (2023-24)	Unit
Gladiolus	0.075	1.35	In Cr. Sticks
Gerbera	0.009	1.35	In Cr. Sticks
All Flower	0.254	2.794	In Cr. Sticks

Source: "[Report from the Directorate of Horticulture Dept. of FPI & H, Govt. of W.B.](#)"

- **Fruit**

Pineapple is the most cultivated fruit in the district. It has a 35% contribution to the total fruit's basket for the district. The rest of the major fruits are Jack Fruit, Banana etc.

Table 4 Major Fruit Production for Jalpaiguri

Name	Area in (Thousand ha)	Production in '000 MT (2023-24)
Pineapple	1.69	56.714
Jack Fruit	0.883	22.272
Banana	0.957	21.893
Papaya	0.338	16.731
Guava	0.327	5.615
Citrus	0.352	4.301
Litchi	0.163	1.642
Sapota	0.09	1.32

Bael	0.067	0.814
All fruits	5.2	134.56

Source: "Report from the Directorate of Horticulture Dept. of FPI & H, Govt. of W.B."

Table 5 Major Spice Production for Jalpaiguri

Turmeric Hinger and Red Pepper are the main contributors from the district. Turmeric itself has about 40% of contribution.

Name	Area in (Thousand ha)	Production in '000 MT (2023-24)
Turmeric (Dry)	0.849	3.396
Ginger (Fresh)	0.707	2.101
Red Pepper	0.038	1.107
Bay Leaves	0.33	0.825
Garlic	0.133	0.798
All Spices	2.387	8.579

Source: "Report from the Directorate of Horticulture Dept. of FPI & H, Govt. of W.B."

District	Name	Major Commodities Trading
Jalpaiguri	Dhupguri Principal Market	Onion, Potato, Tomato, Green Chilli, Ladies Finger, Cauliflower, Bitter Gourd, Coconut, Cucumber, Cabbage, Pumkin, Ginger

Source: [WBSAMB](#)

9. INDUSTRIAL PROFILE

The industrial profile of [Jalpaiguri district](#) is primarily rooted in **agro-based industries** (chiefly tea and food processing), **forest-based industries** (timber), and the emerging **logistics and**

services sector. The economy is predominantly agrarian, with the industrial sector gradually expanding through state-initiated industrial parks.

Key Industrial Sectors

- **Tea Industry:** The expansive tea gardens in the Dooars region are the cornerstone of the district's economy. The industry supports a vast workforce and includes tea processing and packaging units.
- **Agro-Based Industries:** The rich agricultural base (jute, paddy, potato, pineapple) fosters a significant food and agro-processing sector. This includes:
 - Beverage bottling plants (e.g., Hindustan Coca-Cola Beverages Pvt. Ltd., Moon Beverages Limited).
 - Dairy product manufacturing (e.g., Lactic Dairy Products Private Limited).
 - Snacks and fruit processing units (jam, jelly, sauce, chips).
 - Poultry and animal feed production (e.g., Samrat Feed Mills, Modern Animal Feeds Pvt. Ltd.).
- **Forest-Based Industries:** Abundant Forest resources, particularly sal timber, support industries involved in manufacturing furniture, doors, windows, and other wooden fixtures. Cottage industries also produce bamboo and cane products.

Industrial Parks

There are two industrial parks in Jalpaiguri district, registered under West Bengal Industrial Infrastructure Development.

- Dabgram Industrial Park
- Raninagar Industrial Park

Dabgram Industrial Park

The Dabgram Industrial Park, established in 1984, covers a total land of 106 Acres. The closest major town to Dabgram Industrial Park is Siliguri located at about 8 Km. distance from the Industrial Park. It is a strategically located business city and tourist hub. State Highway number

12A is running on the edge of the Industrial Park and providing access to various National and International destinations for the industrial units at the location.

The industrial park has **48 industrial units** in total, **employing 770 people**. There are two big units employing more than 100 people. The sectoral composition of these units is,

- **Agriculture-based processing**
- **Plastic products**
- **Packaging**
- **Engineering**
- **Marbles.**

Raninagar Industrial Park

The Raninagar Industrial Park, established in 1987, covers a total area of 152 Acres. The Industrial Park is located at 8 kms from Jalpaiguri Town on State Highway 12A, also known as Siliguri-Jalpaiguri Road. Jalpaiguri is the largest city and the district headquarters as well as a divisional head quarter of the region. It is an important Trade Centre due to its proximity with North-East states.

The industrial park employs a total of **923 people**, through **27 industrial units**. It has three industrial units where more than 100 people are employed. The sectoral composition of the industrial park is,

- Beverages
- Agriculture-based processing
- Plastic products
- Petroleum
- LPG bottling plant⁹

MSME Clusters

While a number of industrial parks and estates accommodate MSMEs in Jalpaiguri, some key sectors show signs of developing into clusters. The Government of West Bengal's MSME department also identifies four MSME clusters within the district¹⁰.

⁹ Information gathered from WBIIDC

¹⁰ Data compiled from [Directorate of MSME](#), Govt of West Bengal

Table 6 Details of Clusters

Sector	Name of Cluster	No of Unit	No of Employment	Availability of Land for CFC (Yes/No)
Metal Fabrication & Furniture	Damdim Steel Trunk Mfg Cluster	8	42	NO
N.A.	Vermi Compost	130	260	YES
Metal Fabrication & Furniture	Ghughumali Gate Grill and Steel Furniture Cluster	25	357	NO
Plastic Products	Jalpaiguri-Siliguri Plastic Engineering Centre Pvt. Ltd.	34	688	YES

Table 6 shows the presence of four MSME registered clusters, among which the Vermi Compost cluster possesses the greatest number of production units. However, by the employment statistics, the Jalpaiguri-Siliguri Plastic Engineering Centre Pvt. Ltd. cluster overwhelms others with 688 people employed under it. It is to observe that only these two clusters have CFC.

Further, there are 235 **Agro-based product processing units**¹¹ in Jalpaiguri, among which, Food (Rice/Flour/Dal/Oil/Tea/Coffee), Fruit (Pulp/Juice/Fruit Drink), Spices (Masala Powders/Pastes) and Meat (Chicken/Mutton/Pork/Dry fish) are noteworthy. The Food processing unit amongst these has the most units of production, 212 units, whereas, the Fruit processing unit has the most capacity of production, 510 MT.

The details of these are given in table A4 in the Annexure Section.

¹¹ Data compiled from [Potential Linked Credit Plan 2023-24, Jalpaiguri](#) by NBARD

10. BANKING PROFILE

Central Bank of India is the Lead Bank of the District. 18 CBs, one RRB i.e. UBKGB, one DCCB, one ARDB, 01 Small Finance Bank and one branch of WBFC are functioning in the district having 180 branches out of which 77 branches are located in rural areas. A network of 148 PACS are also functioning in the district. Loans disbursed under Priority Sector was ₹4,01,295 lakh during 2022-23.

The CD ratio of the district is 72% as on 31 March 2023. It can be further increased by providing more loans through SHGs, KCCs, JLGs and Agri. Term Loans.

The Central Bank of India is the Lead Bank of the district.

11. ODOP SECTOR

Under the **One District One Product (ODOP)** initiative, **Jalpaiguri district** focuses on promoting its locally significant sectors rooted in natural and agricultural resources. The endorsed products are,

Under the ODOP initiative, **Tea** has been identified as the flagship product of **Jalpaiguri district**, celebrated for its rich flavor, bright color, and distinctive aroma unique to the Dooars-Terai region of North Bengal.

Tea

Cane furniture from Jalpaiguri, the district's ODOP product, showcases skilled craftsmanship using locally sourced cane, blending traditional artistry with eco-friendly, durable design.

Cane
Furniture

Renowned for its artistry, **Jalpaiguri's wood carving**—the district's ODOP product—reflects the region's traditional skill and creativity, transforming local timber into finely crafted decorative and utilitarian pieces.

Wood
Curving

Kalonunia Rice cultivate here has GI Tag

12. EXPORT PROFILE

Jalpaiguri district has quite a diversified export basket. Despite being mainly endowed with vital supply of natural resources, Jalpaiguri is exporting Petro-chemical products the most. In total, the Petro-chemical products make up for about 81% of its exports. Other components, such as, Medicine, Natural Resources, Food Processing and Chemical industries, are also contributing to the district's export basket, but their share of contribution is negligible.

The export volume of the district has actually fallen by 3% between 2022-23 to 2024-25.

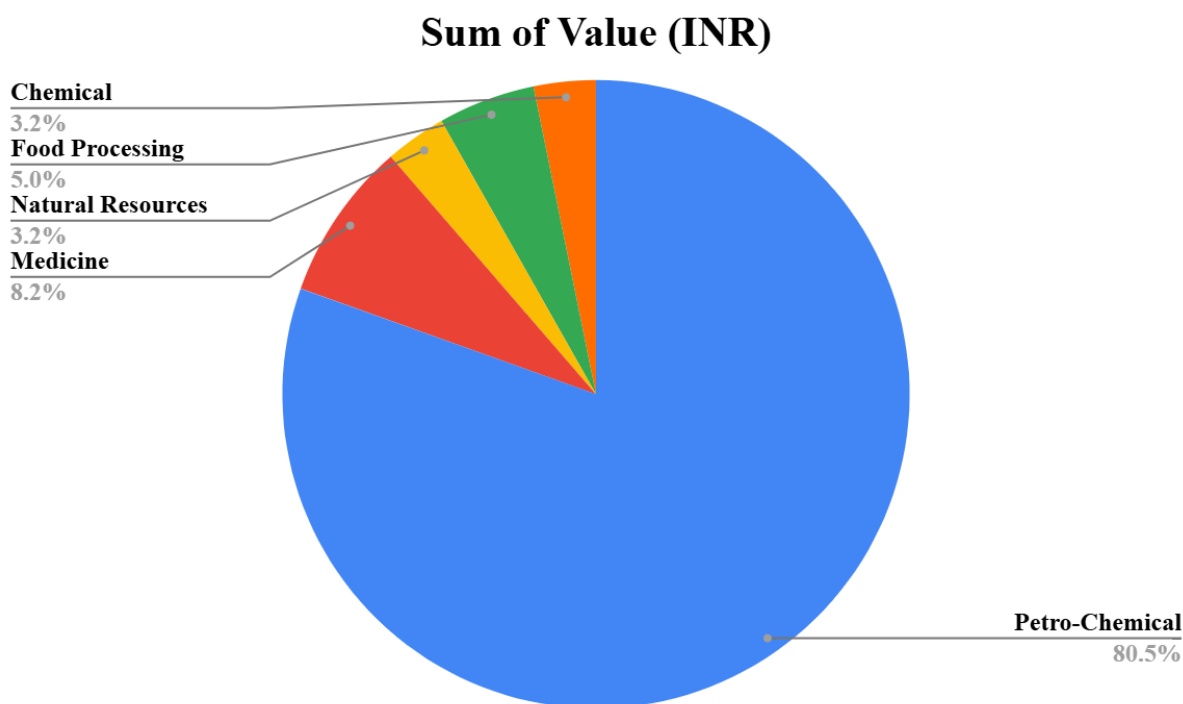


Fig. 4 Sectorial contribution of industries for Exports of Jalpaiguri

The list of products being exported are given in Table 7

Table 7 List of Exported Products from Jalpaiguri in 2024-25

ITC HS Code	Item_Desc	Sum of Value (INR in Billions)
27101949	High Flash High Speed Diesel Fuel Conforming To Standard Is 16861	10.06

27101241	Motor Gasoline Conforming To Standard Is 2796	7.39
30049099	Other Medicine Put Up For Retail Sale N.E.S	1.45
27101939	Aviation Turbine Fuels, Kerosene Type Conforming To Standard Is 1571	0.80
25169020	Stone Boulders	0.72
15079010	Soya Bean Oil Of Edible Grade	0.64
04063000	Processed Cheese Not Grated/Powdered	0.50
30049079	Other Antihypertensive Drugs	0.41
39092010	Melamine Formaldehyde Resins	0.39
30043200	Medicaments Containing Corticosteroid Hormones, Their Derivative and structural Analg	0.34

Source: [Ministry of Commerce and Industry](#)

The **High Flash High Speed Diesel Fuel**, given by **27101949** is the most exported product of Jalpaiguri. It has incurred an export value of 10.06 billion Rs. in 2024-25, almost 44% of the total exports from the district.

Motor Gasoline, given by **27101241**, has also contributed a major share itself, about 33% of the total amount.

The individual contributions of all the rest of products are less than 10%.

Further market details of these exported products are given in Table 12.2 below.

Export Prospect Analysis

In the International market of **High Speed Diesel Fuel (27101241)**, India is doing good, being at the second positions, in the exporters list worldwide. About 96% growth in import demand in the global scenario and similar growth in the Indian export proves both sustainability and potential of the market.

Motor Gasoline (27101241), has grown phenomenal growth from the Indian supply side, with a 381.12% growth of its exports from India. The global demand has grown by 99.58%.

In the market of **Medicines (30049099)** India is the tenth supplier in the global context. Perhaps penetrating markets like Switzerland, Germany, Belgium, Italy etc., who are the top importers of the sector, would be the potential policy to boost India's position ahead.

In the market of **Aviation Turbine Fuels (27101939)**, the Indian exports have grown by 3983.60% in the period of 2020-2024. The global demand has increased by 95.51% as well. India is ranked 2 in the global exporter's list.

The Indian exports have **decreased** in the market for **Stone Boulders (25169020)** by 25.86%, although the global demand keeps rising by 31.53%. India is the 2nd most exporter of the good, considered globally.

The Indian exports of **Soya Bean Oil (15079010)** both the Indian supply and the global demand has been decent. However India is the 20th exporter, globally. Also, India itself is amongst the top 10 countries, importing the good, which raises the opportunity of value addition. Markets like Canada, Chili, Peru etc. could be options to capitalise on their demand biases.

In **Processed Cheese (04063000)** also India comes 26th in the global exporter's list. Penetrating markets like Saudi Arabia, France, Italy etc. could help improve India's position.

Drugs (30049079) have seen a decline in Indian exports by 15.80%. Furthermore, India's position is 10th in the global exporter's rank. To improve this situation, markets like Switzerland, Belgium, Italy etc. might help.

Medicaments (30043200) supply and demand indicators have been decent. However, India is 14th in the global exporter's rank. Markets like China, France, Germany etc. might help to improve India's rank.

The **Melamine Formaldehyde Resins (39092010)** have seen a massive increase in Indian Exports in the recent years, by a 217.72%, while the global demand grows at 36.18%. India itself is amongst the top 10 importers list, and export wise India ranks 9th. Markets like Germany, France, Sweden etc. may help to improve India's exporting rank globally.

Table 8 gives further details of the aforementioned markets and product

Table 8 : Export Prospect Analysis of Jalpaiguri (Unit: USD in Lakhs)

Export Status	HS Code	Product Details	Exported value in 2020	Exported value in 2021	Exported value in 2022	Exported value in 2023	Exported value in 2024	Export growth of India in five years (in %)	World Import Growth of the sector @ 6 digit in five years (in %)	Top five importers of India	Top ten importer of the sector @ 6 digit in world market	India's rank in world exporter list of the sector
Currently exporting from the district	27101949	High Flash High Speed Diesel Fuel Conforming To Standard Is 16861	25.22	56.56	94.22	65.56	49.50	96.31	95.51	South Africa, Nepal, Bangladesh, Mozambique, Malaysia	Singapore, United States of America, Australia, United Kingdom, France, China, Ship stores and bunkers, Türkiye, Germany, Netherlands	2
	27101241	Motor Gasoline Conforming To Standard Is 2796	23.36	90.95	23.36	90.95	146.14	381.12	99.58	UAE, tanzania, Singapore, South Africa, Oman	United States of America, Singapore, Korea, Japan, Indonesia, Netherlands, Malaysia, Belgium, Saudi Arabia, South Africa	6
	30049099	Other Medicine Put Up For Retail Sale N.E.S	74.85	78.97	76.63	82.58	93.49	24.90	94.08	USA, UK, South Africa, Canada, Australia	United States of America, Switzerland, Germany, Belgium, Italy, China, United Kingdom, France, Spain, Japan	10
	27101939	Aviation Turbine Fuels, Kerosene Type Conforming To Standard Is 1571	4.02	0.28	10.28	162.61	164.04	3983.60	95.51	Netherlands, UAE, UK, Area Nes, Singapore	Singapore, United States of America, Australia, United Kingdom, France, China, Ship stores and bunkers, Türkiye, Germany, Netherlands	2
	25169020	Stone Boulders	0.44	0.49	0.42	0.38	0.32	-25.86	31.53	Bangladesh, Maldives, Viet Nam, Japan, Kuwait	Bangladesh, Netherlands, Saudi Arabia, China, France, United Kingdom, Italy, United States of America, Switzerland, Canada	2

	15079010	Soya Bean Oil Of Edible Grade	0.14	0.20	0.29	0.19	0.21	52.73	58.83	Bangladesh, Nepal, Australia, USA	Canada, United States of America, Chile, Peru, United Kingdom, Venezuela, Bolivarian Republic of, India , Mexico, Korea, Democratic People's Republic of, Korea, Republic of	20
Currently exporting from the district	04063000	Processed Cheese Not Grated/Powdered	0.13	0.11	0.14	0.15	0.19	40.04	28.78	USA, Bhutan, UAE, Singapore, Bangladesh	Saudi Arabia, United Kingdom, France, Italy, United Arab Emirates, Belgium, Germany, China, Australia, Iraq	26
	30049079	Other Antihypertensive Drugs	10.31	9.50	8.65	9.14	8.68	-15.80	23.85	USA, France, Germany, Philippines, UK	United States of America, Switzerland, Germany, Belgium, Italy, China, United Kingdom, France, Spain, Japan	10
	39092010	Melamine Formaldehyde Resins	0.05	0.10	0.13	0.16	0.16	217.72	36.18	Nepal, Côte d'Ivoire, Gabon, Ghana, Morocco	Germany, Italy, France, Sweden, India , China, Mexico, United States of America, Poland, Korea, Republic of	9
	30043200	Medicaments Containing Corticosteroid Hormones, Their Derivative and structural Analg	1.22	1.30	1.44	1.34	1.65	35.18	18.92	USA, South Africa, UK, Nigeria, Algeria	United States of America, China, France, United Kingdom, Germany, Netherlands, Japan, Canada, Belgium, Russian Federation	14

13. SWOT ANALYSIS

Studying and examining the different aspects of the district and collecting data from the primary and secondary sources and the focus group discussions conducted in the district, the SWOT Analysis of the district in terms of export development has been depicted below

<p>STRENGTHS</p> <ul style="list-style-type: none"> • Cater as a trade gateway to Bhutan, Bangladesh & NE states • Three NHs pass through the district. • Existence of four Land Custom Station in the district including New Jalpaiguri Railway Jn. • Diverse specialization in food processing industry and logistics services. • Presence of two industrial parks focusing on Agriculture, plastics, petro chemicals and engineering products. • Strong Rail and Road connectivity. 	<p>WEAKNESSES</p> <ul style="list-style-type: none"> • Locational advantage of the district is not utilized properly. • Lack of full utilization of LCS. • Inadequate support infrastructure in LCS. • Hilly region prone to landslides • In spite of sufficient storage facilities most of them are used for potato and not suitable for other products. • Lack of export infrastructure and robust CFCs in the clusters and Industrial parks • Requirement of focused Export Facilitation and International Marketing Assistance, suitable for the district. • Lack of support for R&D, Quality Certifications related to agricultural and food processing sectors.
<p>OPPORTUNITIES</p> <ul style="list-style-type: none"> • Massively growing international market for Indian suppliers in 	<p>THREATS</p> <ul style="list-style-type: none"> • The current exports of the district are more prone to NTBs.

<p>agricultural and food processing sectors.</p> <ul style="list-style-type: none"> • E-commerce exports are gaining momentum • Supportive schemes of both the Central and State Governments for exports • Growing tourism industry. • Emerging new technologies in the food processing sector. 	<ul style="list-style-type: none"> • Lack of facilities in the clusters leading to migration of value addition to other districts/states. • Stricter environmental and food safety requirements in international markets. • Emergence of ESG requirements and other non-tariff barriers in international markets
---	---

14. EXPORT CHALLENGES OF THE DISTRICT

Jalpaiguri district exports more chemicals and petrochemicals, though it produces tea and other agro-processed food products. The major contributions for exports from the district are accounted by Petrochemical (80.5%). This is followed by Medicines (8.2%), Processed Food (5%) and other chemicals and natural resources (3.2% respectively). The exports are majorly done by Traders through border trade. The diversified product basket of the district could not make much in the export markets. The district has potential food products, wooden handicrafts, metal furniture, tea etc. The industrial parks in the district accommodate most of the MSMEs apart from the four industrial clusters. The major export challenge for the FPOs, SHGs and MSMEs in the district is entrepreneurship for exports. Some of the potential products like Tea, Cane furniture, wood carving and processed food products are still not explored properly for international markets.

Infrastructure and logistics

- The district has two industrial parks and four clusters, most of them function as industrial cooperatives representing diverse products like tea, agro-based products, forest-based products, plastic products and engineering products. The clusters lack scale and effective CFCs. There are four LCS including New Jalpaiguri Railway Check Post in the district connecting Bhutan, Bangladesh and Nepal.
- Transport: Four national highways cross this district connecting Sikkim, Kalimpong, Assam and other districts of West Bengal. The district is a critical railway hub in North Bengal. It

connects the NE states and neighboring countries like Nepal, Bhutan and Bangladesh. There are four LCS in the stat and Jalpaiguri.

Market access and finance

- Difficulty reaching export markets: Farmers/SHGs/FPOs, particularly in food processing, cane products and wood products function as captive units for traders and bigger firms and face difficulties in accessing international markets due to lack of awareness which not only denies direct export but also fetches low price. The food product and other cluster exports from the district is carried out majorly by traders.
- Limited access to formal credit: Financing challenges, such as high initial investment costs and logistics costs are significant barriers for many small farmers and FPOs. Most of the MSMEs avail trade and supplies credit as provided by the buyers of bigger units.
- Weak export strategy: Though government initiatives exist to boost exports, there are gaps in the district-level execution of a robust strategy for products with high export potential mainly for product diversification.
- The SEFC should make specific interventions to implement the district level initiatives.

Operational and Environmental challenges

- Climate change impacts: As part of the district is in hilly region and highly dependent on agriculture and horticultural products, it is subjected to the high risk of landslides and climate change.
- Irregular rainfall, frequent floods, and climate changes pose significant risks to both agriculture, horticulture and food processing sectors. Unpredictable weather directly disrupts agriculture and horticulture yields.
- Lack of modern technology: The logistics movements for the district lacks utilisation of modern technology. The MSME units being captive suppliers are devoid of pressure for innovation and lack modern machinery and technological knowledge to improve productivity and innovative products.

- The plains of the district is highly polluted and lacks proper town planning.

GIST OF THE ANALYSIS

The following are the salient points which emerge from the above discussions:

- The major export of the district is contributed by Petrochemicals and chemical products which accounts for around 83.7% of the total exports as reported in the year 2024-25, followed by 8.2% of Medicines, 5% of Processed Food and 3.2% of Natural resources.
- The district is majorly used as a gateway to Nepal, Bhutan and Bangladesh for exports of Petrochemical products despite the district lacking in any petrochemical source.
- Opportunities for value added exports of food products, cane products, wooden products, and other agricultural products are high.
- Several units located in the industrial estates and clusters are majorly acting as feeder units for traders and lack scale except for some big units of coca cola , Lactic Dairy Products etc.
- The strategic location of the district requires more investments in technology, connectivity and industry to develop it as a export hub.

EXPORT ACTION PLAN SUGGESTED

Based on the above facts, analysis of the data and the input from the stakeholders, the following action plan is suggested. The action plan also indicates the desired output of the strategic actions, the responsible agency and the proposed intervention/tool for implementation. It has also been highlighted the activity/activities where a DPR may be required.

Category	Strategic Action	Output Desired	Suggested Agency	Instrument/Intervention
	Revamping the industrial clusters and creating CFCs.	Boosting direct exports of MSMEs in the tea, agro products and	MSME&T, WB	MSME&T, WB may organise special programmes for the MSMEs in agro and forest-based products towards the direct opportunities for

		forest based product clusters.		exports in association with APEDA, FIEO and SEFC. Also establish CFCs in consultation with the relevant SHGs/ FPOs.
	Foreign Post office facility in for E com Exports	Ease of E-Com exports through Dak Niryat Kendra	Postal Dept. + Customs	Mobile foreign post office visiting the district on designated days
	Handholding for direct exports of MSMEs	Increased direct exports from the state	State Govt + GoI	Use acceleration services by institutions like IIFT under suitable schemes. The State Govt. may also launch export incubation fund for supporting the Direct Exports.
	Product and district specific capacity building on exports of MSMEs	Direct exports from MSMEs to diverse markets	State Government	The existing SEFC should undertake time bound product and district specific capacity building of farmers and FPOs in horticultural, floriculture and agricultural products.
	Building Export Hub/Park	Direct Exports from the District	GoI and State Government	Given the strategic location of the district, the district should be developed as an Integrated Export Hub not only to connect land bordered countries but also the other countries especially using the Bagdogra international Air Terminal. The project is more

				feasible through international funding from World Bank, ADB etc.
--	--	--	--	--

15. FGD Inputs

Section A					
Districts Covered		Date		Duration	
Jalpaiguri		22.11.25		14.00 to 17.00	
No. of participants					
Total	37				
Entrepreneurs / Association/Cooperation/Cha mber of commerce	27				
Trade Facilitation Institution	2				
	2				
Government Stakeholders	5				
IIFT Team Participant	1				
Mr. Raktim Mitra					

Section B

Products

Maize	Potato	Stonechips	Cane Furniture	RMG	Animal Grains (Fodder)
Compositable Biodegradable Bags		Spices	Food Grains		

Salient Inputs from the FGD

Products	Physical Infra Core	Physical Infrastructure Support	Soft Infrastructure	Others	Activities
Food Grains, Animal Grains, Spices, Potato, Maize, RMG, Cane Furniture	Requirement of Export Promotion Zone	Place for Manufacturing Units, Proper Logistic Park with all modern ammenities are required.	Promotion of the EPZ and its manufacturi ng units need to be done	All Modern Facilities to be incorporated in the EPZ	Land Acquisition from State Governme nt is required.
	Building up of Export Hub at a designated place is highly required	Showroom type Display Units are required, Proper Support Infrastructur e like	Promotion of the Export Hub with the Products available over there is	Packaging Units, Warehouses, Cold Chain Facility, Testing Lab for Different Products is	

		Parking lots, Resturants, Motel Type / Inn, Warehouse Facilities are required	highly required	required (Phyotosanitary Test, Azo Test, e.t.c.)	
	4 Land Ports are here. It needs to be transferred to ICP.				Land Acquisition from State Governme nt is required.
Compositable Biodegradable Bags			Verifies International Buyer is required. Once order drawn, then handholding is required.	CPCB - Testing Lab for Testing Report & License is required	
RMG (Men & Women)			Handholdin g on Design & Developmen t as per the latest market trend. Marketing	AZO Test Lab required.	

			Assistance for Exports.		
Facilities Available					
Jalpaiguri					
Cluster Details	Name of Cluster	Functional	CFC		
1					
2					
3					
4					
5					

16. ANNEXURE

Table A1 Cold Storage facilities by NHB

S.No.	Name of the Cold Storage	Type of Cold Storage	Total Capacity	Present Activity
1	Jalpesh Cold Storage Pvt. Ltd.	Potato	24000 mt	Potato Store & Multi Store
2	Raichanga Multipurpose Cold Storage Pvt. Ltd.	Potato	420000 packets	Multi-Purpose
3	Teesfa Cold Storage Pvt. Ltd.	Potato	1980	Potato Cooling
4	Kaljani Cold Storage Pvt. Ltd.	Potato	300000 packets	Only Potato Store
5	Doars Cold Storage Pvt. Ltd.	Potato	280000 packets	Only Potato Store
6	Baba Jalpesh Cold Storage Pvt. Ltd.	Potato	241152 pckts	Potato Store
7	Mahakal Himghar Pvt. Ltd.	Potato	230000 Packets	Potato
8	Jalpaiguri Cold Storage Pvt. Ltd.	Potato	192000 packets	Only Potato Store
9	Kaljani Cold Storage Pvt. Ltd.	Potato	15000 MT	Potato
10	Kaljani Cold Storage Pvt. Ltd.	Potato	14520 MT	Potato
11	Triloki Green Fields Pvt. Ltd.	Potato	14000 MT	Potato Store
12	Himalayan Co-Op Cold Storage Ltd.	Potato	10000 mt	Only Potato Store

13	Sri Ram Agro Cold Storage Pvt. Ltd.	Potato	157200	Potato
14	Gourhari Multipurpose Cold Storage Pvt. Ltd.	Potato	88120 qtls	Potato
15	Sri Ram Agro Storage (P) Ltd.	Potato	78.550mt.	Runing
16	Salbari Cold Storage Pvt. Ltd.	Potato	300000 packets	Potato
17	J. K. Multipurpose Cold Storage Pvt. Ltd.	Potato	3000 MT	Multipurpose
18	Uttarayan Cold Storage Pvt. Ltd.	Potato	280000 packets	Potato
19	Shree Hazarilal Cold Storage Pvt. Ltd.	Potato	280000 Packets	Potato
20	Bandhu Multipurpose Cold Storage Pvt. Ltd.	Potato	200000 pckts	Potato
21	Dhupguri Cold Storage	Multipurpose	16200mt.	Runing
22	Dhupguri Cold Storage Pvt. Ltd.	Potato	16200 MT	Potato
23	Jalpaiguri Cold Storage	Potato	14600mt.	Running
24	Kanhaiya Prasad Cold Storage Pvt. Ltd.	Potato	140000 Pckts	Potato Store
25	Fala Kata Co-Operative Cold Storage Ltd.	Potato	105000 pckts	Only Potatao Store
26	Rotek Polytech	Potato	1000 MT	Multipurpose
27	Jalpesh Cold Storage	Potato	20,000	Closed
28	Salbari Cold Storage	Potato	15000	Running
29	Hazarilal Cold Storage	Potato	14000	Running
30	Trilohi Greenfields	Potato	14000	Running
31	Doarb Cold Storage	Potato	14000	Running
32	Baba Jalpash Himghar	Potato	12075	Running
33	Himalayan CO-OP. Cold Storage	Potato	10000	Closed
34	Jaldhaka Cold Storage	Potato	2190	Running
35	Uttarayan Cold Storage	Potato		Running
36	Kanhiya Prasad Cold Storage	Potato	7000mt.	Closed

Source: National Horticulture Board

Table A2: Warehouse in the district

Warehouse Details	Capacity (MT)
Central Warehousing Corporation Central Warehouse Raninagar WBIIDC COMPLEX, RANINAGAR,PATKATA,	20000
RANA CHOWDHURY JOGENDRAPUR,	5000
WEST BENGAL STATE WAREHOUSING CORPORATION	24540

SWC NEW JALPAIGURI SATELLITE TOWNSHIP, P.O - PHULBARI	
WEST BENGAL STATE WAREHOUSING CORPORATION SWC JALPAIGURI D.B.C. ROAD, P.O & Dist. - Jalpaiguri,	4871
WEST BENGAL STATE WAREHOUSING CORPORATION SWC ALIPURDUAR CHOWPATHY, P.O - ALIPURDUAR,	5716

Table A3 Major Crops Grown in Jalpaiguri

Sl. No.	Crop	Area (Hectare)	Production (Tonnes)	Yield (Ton./Ha.)
1	Potato	33,692.00	10,63,560.00	31.57
2	Rice	1,34,471.00	3,62,896.00	2.70
3	Jute	24,398.00	3,02,884.00	12.41
4	Maize	15,433.00	78,038.00	5.06
5	Groundnut	4,846.00	12,398.00	2.56
6	Sugarcane	144.00	11,239.00	78.05
7	Rapeseed & Mustard	5,959.00	5,483.00	0.92
8	Wheat	1,135.00	3,442.00	3.03
9	Khesari	1,297.00	1,641.00	1.27
10	Peas & beans (Pulses)	1,421.00	1,616.00	1.14
11	Masoor	1,561.00	880.00	0.56
12	Sesamum	723.00	701.00	0.97
13	Mesta	44.00	623.00	14.16
14	Urad	928.00	546.00	0.59
15	Moong(Green Gram)	556.00	339.00	0.61
16	Barley	120.00	223.00	1.86
17	Niger Seed	300.00	177.00	0.59
18	Linseed	268.00	109.00	0.41
19	Arhar/Tur	64.00	101.00	1.58
20	Gram	38.00	48.00	1.26
21	Horse-gram	32.00	20.00	0.63
22	Sunflower	10.00	10.00	1.00

Source: Directorate of economics and Statistics

Table A4 Details of Processing Units

Type of Processing Activity	No. of Units	Capacity (MT)
Food (Rice/Flour/Dal/Oil/Tea/Coffee)	212	424
Sugarcane (Gur/Khandsari/Sugar)	NA	NA
Fruit (Pulp/Juice/Fruit Drink)	7	510
Spices (Masala Powders/Pastes)	4	7
Dry-fruit (Cashew/Almong/Raisins)	NA	NA
Cotton (Grinning/Spinning/Weaving)	NA	NA
Milk (Chilling/Cooling/Processing)	NA	NA
Meat (Chicken/Mutton/Pork/Dryfish)	12	276
Animal Feed (Cattle/Poultry/Fishmeal)	NA	NA
Total	235	1217

Source: [Potential Linked Credit Plan 2023-24](#)