

CONTENTS

1. INTRODUCTION

Hooghly district is located in West Bengal, India, on the banks of the Hooghly River, about 35 km north of Kolkata. It is known for its rich history, diverse economy, and agricultural and industrial development. *The name “Hooghly” is probably derived from the ‘HOGLA’, a tall reed, which grows in abundance on the riverbanks and in the marshy lowlands below them.* The headquarters of the district are at Hooghly-Chinsurah (*Chunchura*). There are four subdivisions: Chinsurah Sadar, Srirampore, Chandannagore, and Arambagh.

2. CLIMATIC CONDITIONS

The Hooghly district in West Bengal has a **tropical savanna climate**. It **experiences hot, humid summers and mild winters, with the monsoon season bringing significant rainfall**. The district does not experience extreme temperature variations. Over the course of the year, the temperature typically varies from 61°F to 100°F and is rarely below 61°F or above 113°F.¹

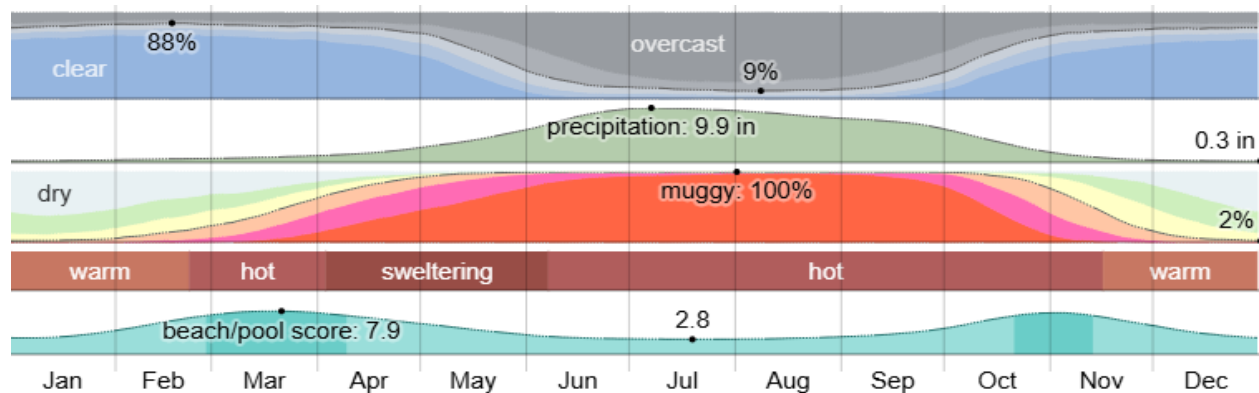


Fig 1 : Climatic Mapping of Hooghly
Source : Weather Spark

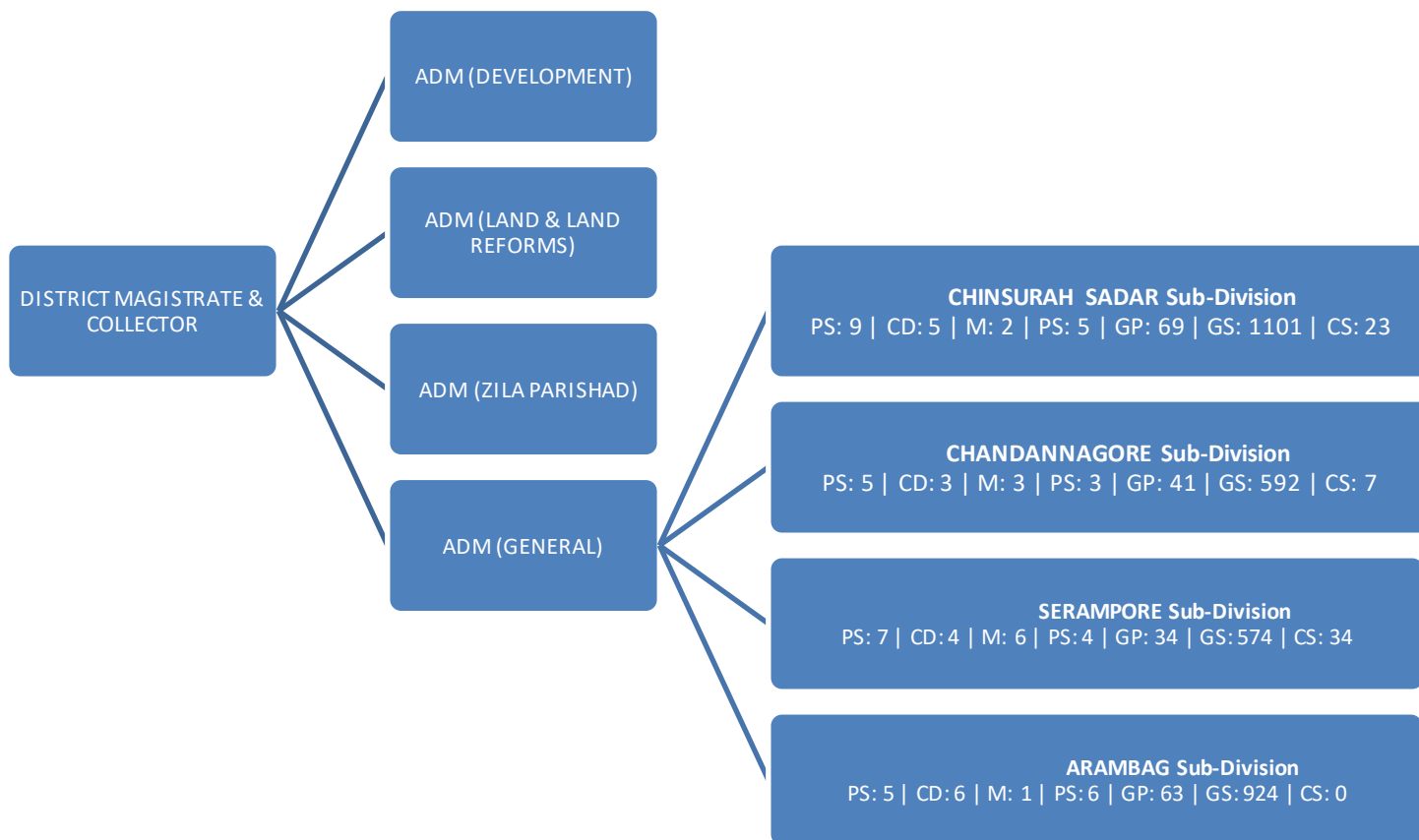
¹Taken from Weather Spark

3. ADMINISTRATIVE PROFILE

The administrative setup of the district is led by the **District Magistrate cum Collector**. Under the District Magistrate, there are 4 Additional District Magistrates.

Hooghly District has **4 Sub-divisions**: Chinsurah, Chandannagar, Serampore & Arambagh. Within these sub-divisions, there are **26 Police Stations** in total. Further, there are **1 Municipal Corporation, 12 Municipalities and 18 Community Development Blocks, 18 Panchayat Samities, 207 Gram Panchayats & 3191 Gram Sansads** under Hooghly District.

The distribution of the administrative order has been detailed below in Fig 2. The details of the same are given in the annexure (Ref : Table A1, A2 and A3, in the **ANNEXURE** section).



PS: POLICE STATION, CD: COMMUNITY DEVELOPMENT BLOCK, M: MUNICIPALITY, PS: PANCHAYAT SAMITY, GP: GRAM PANCHAYAT, GS: GRAM SANSAD, CS: CENSUS TOWN.

Fig 2: Administrative Flow of Hooghly

Source: Compiled from official website of Hooghly, Govt of West Bengal

4. LOCATION AND GEOGRAPHY

Hooghly district spans a **geographical area of 3,149 sq. km**, located **between 23°01'20"N to 22°39'32"N latitudes and 88°30'20"E to 87°30'15"E longitudes**.

It is **bordered by Nadia to the east, Purba Bardhaman to the north, Bankura to the northwest, Paschim Medinipur to the southwest, and Howrah to the south**.

The district is primarily a flat alluvial plain with no elevation above 200 meters. The Hooghly River defines its eastern boundary and plays a vital role in the region's irrigation and transport. Other significant rivers include the Damodar and the Bhagirathi, which receives water from the Farakka Feeder Canal, a man-made channel linked to the Ganges via the Farakka Barrage.

Historically, the river system in this region included the Saraswati, Jamuna, and the Ganga, each distinguished by color and flow. The Hooghly's current course was significantly altered during the 18th century under Alivardi Khan, with Dutch assistance, marking the transformation of local hydrology and trade routes. The district's strategic location along the Hooghly has contributed to its historical and economic importance, with Kolkata lying on its banks.

5. DEMOGRAPHY

According to the 2011 census Hooghly district has a **population of 5,095,875**. The district has a **population density of 1,753 inhabitants per square kilometer (4,540/sq. mi)**. Its population growth rate over the decade 2001-2011 was 9.49%.

Hooghly has a **sex ratio of 958 females for every 1000 males**, and a **literacy rate of 82.55%**. 38.57% of the population lives in urban areas.

Scheduled Castes and Scheduled Tribes make up 24.35% and 4.15% of the population respectively.

Bengali is the predominant language, spoken by 87.49% of the population followed by 7.59% Hindi, 2.37% Santali & 1.72% Urdu. Hindi & Urdu are predominantly found in Urban Areas.

The demographic distribution of Hooghly is given by the following data:

Table: 1 Major Demographic Distribution of Hooghly

Unit: Population in Lakhs

PARAMETERS	TOTAL	RURAL	URBAN
Number of Households	12.87	7.81	5.06
Total Population (Persons)	55.19	33.91	21.28
Total Population (Males)	28.15	17.23	10.92
Total Population (Females)	27.04	16.68	10.37
Literates (Persons)	40.78	23.89	16.89
Literates (Males)	22.12	13.10	9.02
Literates (Females)	18.67	10.80	7.87
Total Workers (Persons)	21.53	13.73	7.80
Total Workers (Males)	17.14	10.77	6.37
Total Workers (Females)	4.39	2.97	1.43
Agricultural Labourers	6.01	5.60	0.41
Workers in Household Industries	1.12	0.81	0.31

Source: Data Compiled from Census, 2011

6. LOGISTIC INFRASTRUCTURE PROFILE

The major cities and towns of Hooghly district include Chinsurah (Chuchura), Serampore, Rishra, Konnagar, Uttarpara, Baidyabati, Bhadreswar, Champdani, Tarakeswar, Dhaniakhali, Pandua, Jangipara, Polba, Haripal, and Goghat. Hooghly district boasts a well-developed transport and communication network, supported by national highways, state highways, and an extensive railway system. The district is a key transportation hub in West Bengal, with strong connectivity to Kolkata and nearby industrial and commercial centers. Major railway junctions like Howrah and Bandel facilitate seamless travel, while the Grand Trunk Road (NH-19) and other highways ensure efficient road transport. The proximity to Kolkata also provides access to air travel through Netaji Subhas Chandra Bose International Airport.

Road Transport

Key National Highways in Hooghly District:

- **NH 19 (formerly NH 2):** This is a prominent highway that passes through the district, with a section from the border with Purba Bardhaman to Howrah and then to North 24-

Parganas. The highway connects Hooghly District to several states like Jharkhand, Bihar, U.P. & Haryana & connects to Union Territory Delhi.

- **NH 16:** This highway, formerly known as NH 6, connects Dankuni in Hooghly to the Jharkhand border. This highway also connects Hooghly to several states like Odisha, Andhra Pradesh, Tamil Nadu.

Key State Highways in Hooghly District:

- **State Highway 2 (SH 2):**

This highway passes through the district, connecting Kotulpur to Arambagh, Pursurah, Champadanga, Tarakeswar, and Baidyabati before continuing into North 24 Parganas.

- **State Highway 13 (SH 13):**

Also known as the Delhi Road or Old Delhi Road, this 4-lane highway connects Mogra to Dankuni, serving as a major artery from Kolkata to the Hooghly area.

- **State Highway 15 (SH 15):**

A section of this highway runs through Chanditala, Seakhala, and Champadanga in the Hooghly district.

- **Other State Highways:**

Parts of other state highways, such as SH 1 and SH 5, are also present in the Hooghly district.

Rail Transport

The **major railway lines serving Hooghly district** are part of the Howrah-Bardhaman main line and the Howrah-Bardhaman chord line, under the Eastern Railway zone. Key railway stations in the district include:

1. **Bandel Junction:** A major railway hub with connections to Howrah, Sealdah, and Burdwan.
2. **Chuchura (Chinsurah):** Connects to Kolkata and northern Bengal.
3. **Serampore:** Serves as an important stop for suburban and long-distance trains.
4. **Tarakeswar:** Terminus of the Tarakeswar branch line, linking to Howrah via Sheoraphuli.

Additionally, the **Hooghly-Katwa line** (part of the Eastern Railway) provides connectivity to rural areas and neighboring districts.

Water Transport

Water transport in Hooghly district involves a major ongoing project, the West Bengal Inland Water Transport, Logistics and Spatial Development Project, aiming to modernize passenger and freight movement along the Hooghly River with new vessels, improved infrastructure like pontoons and jetties, and enhanced terminal facilities. Services include regular passenger ferries between Kolkata and Howrah, logistics for freight, and the introduction of modern vessels with enhanced safety and green alternatives like electric ferries. Historical routes and traditional boats also played a significant role in the region's trade and commerce.

Multiple ferry ghats (river banks with docks) operate along the Hooghly River, providing an affordable and convenient mode of transport for commuters. These ferries connect towns and cities within the Hooghly district to each other, as well as to areas on the opposite bank in the North 24 Parganas district.

Prominent ferry routes and ghats in and around the district include:

- **Chinsurah Ferry Ghat:** Provides service to Naihati, located in the North 24 Parganas district.
- **Serampore Ferry Ghat:** Connects Serampore to Barrackpore in the North 24 Parganas.
- **Konnagar Panihati Ferry Service:** Links the towns of Konnagar and Panihati.
- **Telinipara Ferry Ghat:** Offers regular services for daily commuters.
- **Dunlop Ferry Ghat:** Connects Dunlop (in Hooghly's Bansberia area) with Halisahar.
- **Balagarh Ferry Ghat:** Services the Sripur-Jirat region

Hooghly river is part of the **National Waterway-1: Haldia–Allahabad corridor**. It is a major freight corridor and also provides waterway link to the Kolkata Port.

The Shyama Prasad Mookerjee Port, Kolkata (SMPK), is India's oldest and only riverine major port, located 232 km inland on the Hooghly River and 70 km from the district. Established by the British East India Company and commissioned in 1870, it serves as a crucial gateway for Eastern India's trade, handling commodities like liquid cargo, coal, containers, and

bulk cargo through its Kolkata Docks System (KDS) and deep water Haldia Dock Complex (HDC).

Haldia Dock Complex (HDC), popularly known as Haldia Dock Complex, is a docking facility on the Hooghly river in Haldia; under the Shyama Prasad Mookerjee Port, Kolkata. The dock is around 159km away from the district. The facility specializes in Dry & Liquid Bulk Cargo. Hooghly's inland waterways and access to the **Haldia Dock Complex** connect businesses to the broader National Waterway system, opening up markets across India and potentially to neighbouring countries like Bangladesh through the Indo-Bangladesh Protocol Route. By addressing the challenges and leveraging the advantages, water transport can play a crucial role in accelerating economic growth and business development in Hooghly².

Air Transport

Air connectivity for business development in Hooghly: While Hooghly currently lacks a commercial airport within the district itself, its proximity to Kolkata offers significant advantages for air-based business development.

Nearby airports:

- **Netaji Subhash Chandra Bose International Airport (CCU), Kolkata**

This is the primary airport serving Hooghly, located around 60 km away. It provides excellent connectivity for both domestic and international travel and cargo.

- **Kazi Nazrul Islam Airport (Durgapur)**

Located approximately 150 km from Hooghly, this regional airport offers limited flights but can be an option for certain businesses

Export infrastructure at Netaji Subhash Chandra Bose International Airport (CCU), Kolkata

² Haldia Dock Complex and Haldia Dock Authority

Netaji Subhas Chandra Bose International Airport (CCU), Kolkata, boasts a well-developed International Air Cargo Terminal, essential for facilitating exports from the region and connecting businesses to global markets.

Here's a breakdown of its key features: International air cargo terminal

- **Established Expertise:**

Kolkata's International Air Cargo Terminal

holds the distinction of being the first of its kind in India, commissioned in 1975.

- **Strategic Location:** It's situated conveniently, just half a kilometre north of the international terminal building, with robust road infrastructure for seamless cargo movement.
- **Extensive Facilities:**
 - **Covered Area:** The terminal encompasses a vast 21,906 square meters of covered space, [according to www.nscbiairport.com](http://www.nscbiairport.com).
 - **Capacity:** It has an impressive annual holding capacity of 120,000 metric tons, including transshipment cargo.
 - **Aircraft Accommodation:** Four dedicated parking bays cater to freighter aircraft, accommodating large models like the Boeing 747.
- **Integrated Services:** The Airports Authority of India (AAI) has meticulously designed the terminal to offer a comprehensive range of facilities for efficient cargo processing, comparable to international standards.
- **One-Stop Shop:** All major airlines and regulatory agencies involved in pre-shipment formalities and clearance are conveniently housed under one roof, streamlining the export process.
- **Export Wing:** A dedicated export wing within the cargo terminal provides a covered area of 8,516 square meters, including an Elevated Transfer Vehicle (ETV) area of 1,333 square meters.
- **Special Cargo Handling:**
 - **Cold Storage:** Dedicated facilities with three chambers and controlled temperatures cater to temperature-sensitive cargo like pharmaceuticals, vegetables, fruits, and meat.
 - **Strong Room:** A secure strong room handles valuable cargo.

- Hazardous Cargo Shed: A designated shed safely stores and manages hazardous cargo.
- Transshipment Shed: Facilitates efficient transfer of goods between flights.

General facilities

- Integrated Cargo Management System (ICMS): An online system streamlines data processing and ensures efficient cargo management.
- Equipment: Forklifts, high reach takers, electronic and mechanical weighing machines, cargo trolleys, and power pallet trucks enhance operational efficiency.
- Parking & Docking: Dedicated idle Unit Load Device (ULD) parking areas and 16 truck docks ensure smooth flow of vehicles and cargo handling.
- Disposal Unit: Facilitates the disposal of unclaimed or uncleared cargo.

Connectivity and reach

- Kolkata International Air Cargo Terminal

serves as a critical hub for air cargo services across the entire Eastern and North-eastern regions of India.

- It facilitates international freight transactions with six major global market regions, including South-Asian, South-East Asian Countries, Western Countries, Middle-East Countries, and Central Asia.

In summary, Kolkata Airport's robust export infrastructure, including a well-equipped and strategically located cargo terminal, efficient processing systems, and dedicated facilities for various types of cargo, positions it as a vital gateway for businesses looking to export goods from Eastern India to the global marketplace³.

7. EXPORT INFRASTRUCTURE

Due to its proximity to Kolkata and the Hooghly River, the Hooghly district leverages a robust export infrastructure, including access to a major port system, national waterways, highways, and rail networks.

³ Data Compiled from Airport Authority of India

Land Custom Stations

As the Hooghly district is not situated directly on the border with Bangladesh, it does not have its own Land Custom Stations (LCS) for road-based trade. Exports and imports via land from Hooghly must be routed through the major, well-established LCS located in other districts of West Bengal. However, the district does have a riverine customs station for trade via inland waterways.

Major land custom stations near Hooghly Businesses in Hooghly typically utilize the following land ports for trade with Bangladesh:

- Petrapole Land Port, North 24 Parganas : This is the largest and most significant land port in South Asia, located approximately 80 km from Kolkata. It handles a substantial volume of trade and passenger traffic between India and Bangladesh.
- Ghojadanga Land Customs Station, North 24 Parganas: Another very active and important land port for trading with Bangladesh, also located in the North 24 Parganas district.
- Gede Land Customs Station, Nadia : Used for both road and rail cargo movement, with a railway link to Darshana in Bangladesh. Initiatives are underway to expand its road capacity for export and import activities.

Riverine customs station in Hooghly

While most land trade is handled elsewhere, the Hooghly district does have one customs station for inland waterway transport:

Tribeni (Bandel) Land Customs Station : In 2021, the government declared Tribeni (in the Bandel area of Hooghly district) as a Land Customs Station for trade with Bangladesh via the river route, following the Protocol on Inland Water Transit and Trade. Tribeni (Bandel) LCS is the dedicated facility within the district. The Tribeni (Bandel) Land Customs Station (LCS) is not a conventional land border post, but rather a customs-notified riverine jetty for trade with Bangladesh via inland waterways. It was designated as a customs area to facilitate the export of goods like fly ash and stone chips in barges, a crucial part of the Inland Water Transit and Trade Protocol between India and Bangladesh.

- Location and purpose
 - Location: The customs area is situated at the IWAI BTPS Jetty-2 in Tribeni, near the Bandel Thermal Power Station, on the bank of the Hooghly River. Tribeni is in the Hooghly district of West Bengal.
 - Purpose: The station facilitates the loading and customs clearance of specific bulk cargo for export to Bangladesh via barges. This leverages the National Waterway 1 (NW-1), which includes the stretch of the Hooghly River flowing past Tribeni⁴.

Waterway vs. land route for Hooghly exports

For exporters in Hooghly, the choice of customs station depends on the type of goods and logistical priorities.

- For containerized and bulk cargo, exports primarily rely on the Syama Prasad Mookerjee Port system in Kolkata and Haldia, which is part of Hooghly's overall export infrastructure.
- For land-based exports to Bangladesh, businesses use the nearby land ports in neighboring districts, especially Petrapole, for its high volume and efficiency.
- For waterway-based exports using the inland transit protocol, the Tribeni (Bandel) LCS is the dedicated facility within the district.

Integrated Check posts

Hooghly district does not share a land border with any neighboring country; it does not have an ICP within its boundaries. The nearest ICP are the Petrapole in North 24 Paraganas, Changrabandha in Coochbehar, Ghojadanga in North 24 Paraganas, Fulbari in Jalpaiguri, and Hilli in Dakhin Dinajpur on the India-Bangladesh border, and Jaigaon in Alipurduar District.

⁴ Data compiled from the Notification by the Office of the Commissioner of Customs, West Bengal, Kolkata & Inland Waterway Authority of India

Cold storages in the district

Hooghly district possesses the most extensive cold storage infrastructure in West Bengal, primarily due to its position as a major potato-growing region. The district has more than 100 registered cold storages under National Horticulture Board and Ministry of Food Processing & Industries with more than 3 lac metric tonne capacity. Due to poor marine profile, the district has only one cold storage for marine and fishery under MPEDA with a capacity of 4700 MT⁵. (Refer Table A4 in Annexure)

Warehouse in the District

Though there are 8 warehouses registered under Warehouse Regulatory Development Authority with 34000 MT capacity, 4 registered rice warehouses under Rural Infrastructure Development Fund (RIDF) with a total capacity of 20000 MT and 2 private hired godowns by the Government of 3000 MT capacity⁶, there are around 146 godowns/warehouses listed under private commercial estate e-market place⁷. (Refer Table A5 in Annexure)

8. AGRICULTURAL PROFILE

Hooghly district is a significant agricultural area in West Bengal, with agriculture supporting over 70% of its population and being a major producer of rice, potato, and jute.

The total Geographical area of Hooghly is 317.09 thousand hectares of land. The Net cultivated area of land is 220.35 thousand hectares i.e. **69.49% of the geographical area is cultivable**. The **net sown area** is 219.91 thousand hectares of land and has a **cropping intensity** of 249.45%.in 2020-21 as shown in the Land Utilization Table A6 in Annexure.

The economy of the district is based on its agricultural strength.

The core agricultural crops of the district are **Potato, Rice, Jute, Groundnut, Sesasum, Sugarcane, Rapeseed & Mustard.**

Other Crops include Gram, Maize, Masoor, Moong (Green Gram), Khesari, Urad etc.

⁵ Data compiled from National Horticulture Board, MPEDA and MOFPI

⁶ Data compiled from West Bengal State Warehouse Corporation and Warehouse Regulatory Development Authority

⁷ Data taken from 99Acres.com – estate e – market place

Potato accounts to 68.83% of the agricultural produce from the district, Rice being 20.83%, followed by Jute 6.83% as shown in the graph below. The detailed production details & yield details is given in Table A7 in the Annexure.

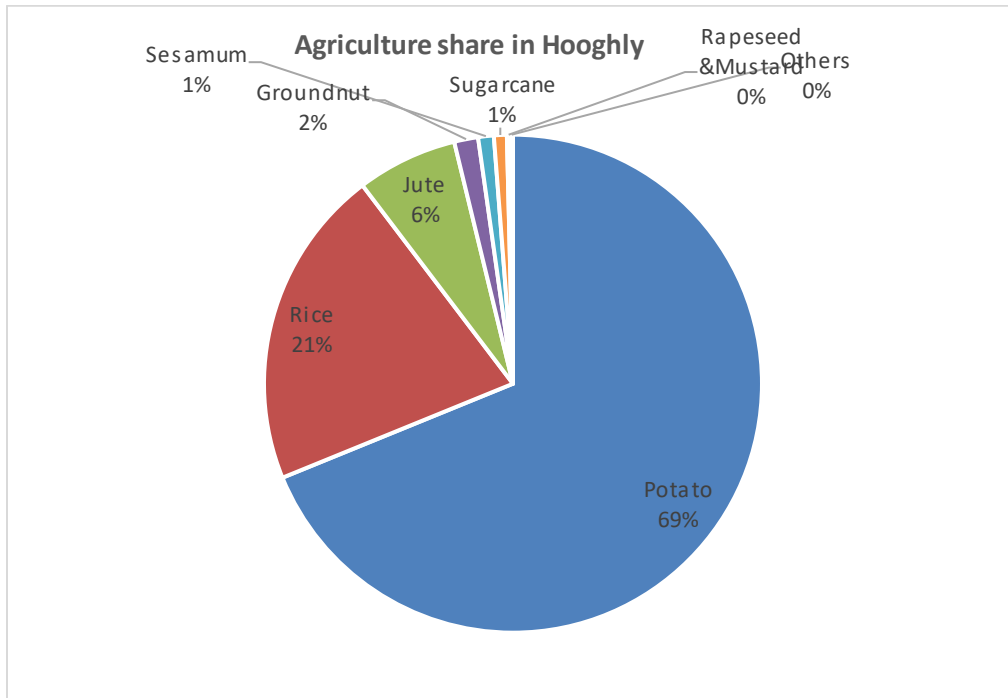


Fig 3: Agricultural Production Share in Hooghly

The **production technology is gradually strengthening its capital composition** in terms of greater use of fertilizer, improved seeds & pesticides. Farmers are now habituated to use modern Farm machinery & implements like Tractor, Power Tiller, Power Thresher, Solar Pump set, Power Sprayer, Combined Harvester, and Paddy Transplanter etc.

River water is an important source of irrigation for agricultural activities in the district. They provide great scale of convenience to the large number of agriculture-dependent population of the district.

To maintain ecological balance, the Agriculture Department is emphasizing organic farming / sustainable farming and use of bio-fertilizers / organic manures and bio-pesticides in crop production are being given top most priority.

Horticulture Profile of the District

Flowers:

Hooghly District produces **0.041 thousand metric tons of Seasonal Flowers** which is approximately 0.43% of the total flower production from the state.

The District produces **0.732 thousand metric tons of Total Loose Flowers** which is approximately 0.84% of the total flower production from the state.

The District produces **2.941 crores of Total Cut Flowers** which is approximately 0.75% of the total flower production from the state.

Table 2: Flower Production of Hooghly

Name	Area in ha (in Thousands)	Production (2023- 24)	Unit	% of Total Produce from West Bengal
Gerbera	0.008	1.669	Crore Sticks	28.76%
Orchid	0.004	0.02		6.67%

Source: *"Report from the Directorate of Horticulture Dept. of FPI & H, Govt. of W.B."*

Fruits:

Hooghly District produces **160.287 thousand metric tons of Fruits** which is approximately 4.13% of the total fruit production from the state.

The District produces 6.68% of the total Banana produced in the State, followed by Papaya & Mango which is approx. 5.12% & 3.76% of the total produce of the state respectively.

Table 3: Fruit Production of Hooghly

Name	Area in ha (in Thousands)	Production (2023- 24)	Unit	% of Total Produce from West Bengal
Banana	6.001	96.25	Thousand MT	6.68%
Papaya	0.932	17.11		5.12%
Mango	6.254	33.13		3.76%
Sapota	0.111	1.254		2.70%

Other Citrus	0.252	2.677		2.44%
Litchi	0.23	1.828		2.22%

Source: "[Report from the Directorate of Horticulture Dept. of FPI & H, Govt. of W.B.](#)"

National Agricultural Mandi in Hooghly

District	Name	Major Commodities Trading
Hooghly	Sheoraphuli Market Yard	Carrot, Ginger, Green Chilli, Onion, Potato, Tomato, Cucumber, Pointed Gourd, Pumpkin, Papaya, Peas Green, Brinjal, Ladies Finger, Cabbage, Cauli Flower, Carrot, Capsicum

Source: <https://wbagrmarketingboard.gov.in/e-Nam%20Market.html>

9. INDUSTRIAL SCENARIO OF HOOGHLY DISTRICT

The industrial scenario of Hooghly is characterized by a diverse range of industries, with the jute sector historically dominant and now complemented by Micro, Small, and Medium Enterprises (MSMEs) specializing in areas like foundry, rolling mills, chemicals, engineering, and various crafts. The Hooghly district, with its strategic location on the Hooghly River and proximity to Kolkata, has a mix of large-scale units and a significant number of smaller businesses, which continue to grow and attract investment. Key industries thrive along the river banks and national highways, supported by resources like local jute, coal, power, and a skilled workforce.

Key industries and clusters

- Modular Food Park, Dankuni:

This is the only Food park in Hooghly District. This food park is developed across 500 acres of land and comprising of 215 Food producing units. It hosts a significant number of medium and small-scale industries. Key companies operating here include Amul, Anmol, Bhagwati Foods, CG Foods, e.t.c.

The Details about the industries are shown in Table A8 in the Annexure.

- **MSME Clusters:**

The district promotes the growth of Micro, Small, and Medium Enterprises (MSMEs) through various clusters. There are **25 Clusters** registered under the Directorate of MSME & Directorate of Textiles, Govt of West Bengal. Out of these 25 clusters, 13 clusters belong to the sectors Textiles and Readymade garment. The district is rich in handloom and hand embroidery work. Around 6000 employees are engaged in this sector. Another important cluster related to this sector is the cluster in Srirampur for printing in silk sarees and scarves for which there are 38 units in the cluster engaging around 12000 employees. The other important cluster of the state are the 2 optical Lense cluster having around 140 units engaging 250 employees. The other emerging and growing cluster of the district is the Imitation jewelry Cluster of Singur where around 1100 workers are working. Plastic Products like Mosquito net, garden net and artificial flowers, all made of plastics are three important clusters in plastic sector in the district. Brass Metal, Leather Gloves and Ceramic Cluster are some other clusters of the state.

The details of the Clusters will be given in the table A9 in the Annexure.

10.BANKING SECTOR

The district has good network of bank branches having **505 branches of commercial banks, 38 branches of RRB, 21 branches of District Cooperative Banks, 6 branches of Coopt. Agriculture & Rural Development Banks and 374 Primary Agriculture Societies (PACS) affiliated to CCBs.**

Ujjivan Small Finance Bank is the only SFB operating in Hooghly District with 10 branches.

CD Ratio under Priority Sector Lending (PSL) had observed 128% growth.

UCO Bank is the lead bank in this District.

The details about the Banks present in Hooghly & their performance in terms of Loans, Credit Deposit Ratio, recovery Ratio, e.t.c. is shown in Table A10 in the Annexure.

11. ODOP SECTOR OF THE DISTRICT

From the above-mentioned industries and sector, the following has been approved by the Government as the ODOP products of the district. A brief has been given in the figure below:

HANDLOOM SAREE (DHANIAKHALI)

- India is a key exporter of traditional handloom products, with Dhaniakhali sarees from West Bengal (Hooghly district) standing out for their fine craftsmanship and cultural value. Known for their lightweight cotton fabric and distinctive broad borders, these sarees are produced by skilled weavers using time-honored techniques. With rising global interest in sustainable and artisanal fashion, and support from schemes like ODOP and GI tagging, Dhaniakhali sarees are gaining recognition.

COSTUME JEWELLERY

- India is a major exporter of imitation jewellery, supported by skilled craftsmanship and affordable production. Major manufacturing hubs include Maharashtra (Mumbai), West Bengal (Howrah, Hooghly), and Gujarat (Rajkot, Jamnagar), known for producing a wide range of traditional and modern designs. With rising global demand and support from schemes like ODOP and SEZ, the industry continues to grow. Online platforms and government incentives further boost the reach of Indian imitation jewellery in international markets.

CHIKAN EMBROIDERY

- Chikankari is traditionally associated with Lucknow, Uttar Pradesh, West Bengal has its own embroidery heritage, and Chikan-style work does appear in select districts.

Fig 4: ODOP details of the district

12. EXPORT PROSPECTS AND POTENTIALITY OF THE DISTRICT

Hooghly in the last three years from 2022-23 to 2024-25 has experienced a negative growth of 19.04% in its export. Base Metal Section Products are the top exported products from the district. They constitute 29.48% of the total export of Hooghly District, with components of Spun Pipe (HSN CODE: 73030030) and Other Articles of Non Malleable Cast Iron (HSN: 73251000). Next there is Chemical products i.e. the Carbon Black (HSN: 28030010) covering 25.49% and Jute Produce mainly Jute Bags and Jute Fabric (HSN: 63051040 & 53101013) having 18.22% followed by Woolen Yarn & Food Processing at 8.35% & 7.55%. The rest Section of Iron & Steel, Mineral Products & Agriculture (mainly rice) cumulatively, take about 10.91%.

The contribution of the sectors currently exporting from the district is shown below

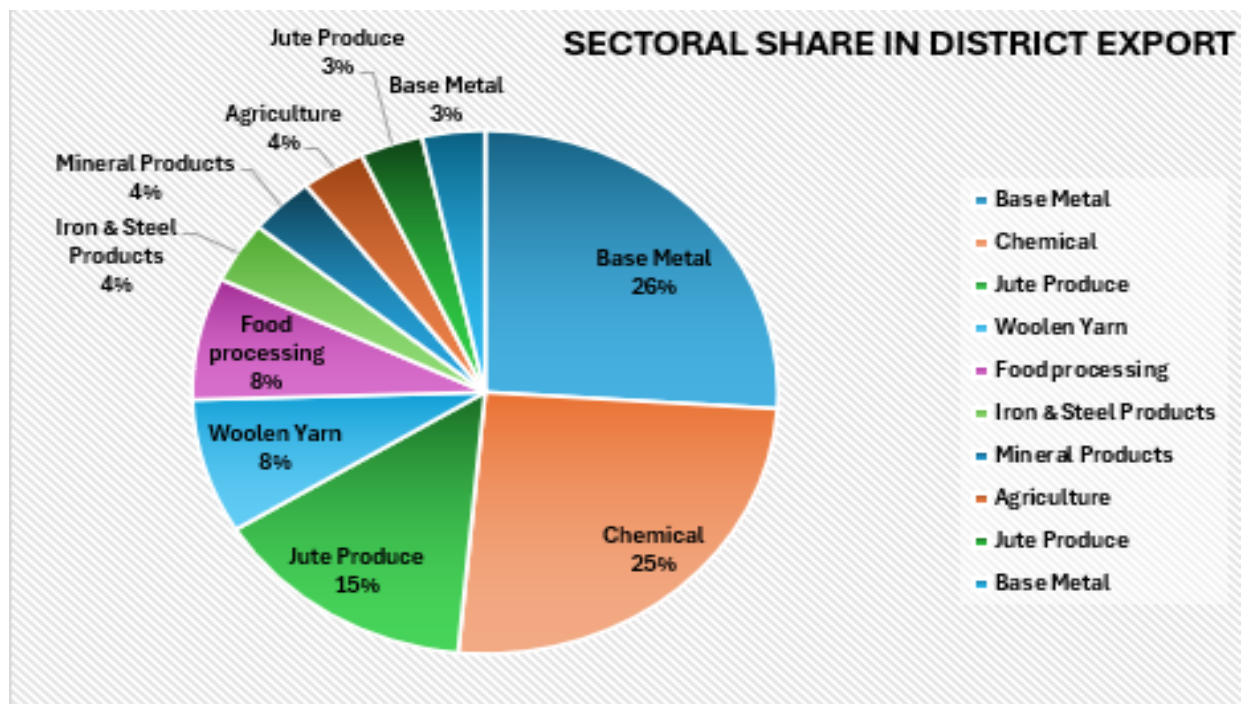


Fig 5: Sector Contribution in Hooghly exports

Source: Data compiled from the Dashboard of Ministry of Commerce & Industry, Govt of India

On analyzing the current export profile of the district and comparing, it has been found that the Mineral Section (Coal Tar; HSN: 27081010), Chemical Section (Carbon Black; HSN: 28030010) & Food Processing Section products (Sweet Biscuits; HSN: 19053100) have given a huge export growth in the last 5 years (more than 100% i.e. 707%, 338%, 107% respectively) followed by the Textile Section products, Yarn (HSN: 51071030) & Agriculture section products (Parboiled Rice; HSN: 10063010) which accounts for 75% & 50% growth in the last 5 years. This growth is not limited to the export from India but to the world import market as a whole. (Ref Table A11: District Export Data). There is considerable growth in Cast Iron products & sluggish export growth in the Jute products & Spun pipes. Apart from these products, the other non-exporting products like vegetables of the district, imitation costume jewellery, direct export from the state is yet to be seen. The Jute products from the district are not competitive with respect to the Mineral, Chemical, Food Processing, Textiles Section.

The current exporting products has been analyzed with respect to its position in Indian Exports and International demand. It been found that for most of the product of interest of the district, India has experienced a rapid export growth from 2020 to 2024.

As analyzed from the analysis below, it is clear that the exported products from Hooghly District have a huge potential in the international market as both India's export growth and World Import growth are rapidly increasing in last five years (Ref : Table 3.1 given below)

Table 3.1: Export Potentiality Analysis of Hooghly

HS Code	Product Details	Exported value in 2020	Exported value in 2021	Exported value in 2022	Exported value in 2023	Exported value in 2024	Export growth of India in five years (in %)	World Import Growth of the sector @ 6 digit in five years (in %)	Top five importers of India	Top ten importer of the sector @ 6 digit in world market
73030030	Tubes, pipes and hollow profiles, of cast iron	133,412	157,415	188,270	192,812	144,298	8.16%	6%	Bahrain, United Kingdom, Italy, France, Singapore	, Italy, Indonesia, France, Kuwait, Germany, UK, Egypt, Iraq, Canada, Switzerland
28030010	Carbon "carbon blacks and other forms of carbon", n.e.s	110,181	261,941	323,613	384,447	482,914	338.29%	13%	USA, Srilanka, Thailand, UAE, Vietnam,	China ,Korea, Republic of Hong Kong, China ,France ,Canada ,Singapore ,Viet Nam United States of America , Spain Taipei, Chinese
63051040	Sacks and bags, for the packing of goods, of jute or other textile based fibres of heading	25,91,014	43,16,635	73,25,103	68,65,163	101,163	6.59%	-1%	Ghana, USA, Côte d'Ivoire ,Netherlands, Lebanon	India, Ghana, Mozambique, Netherlands, Côte d'Ivoire ,USA, Germany, Indonesia, Lebanon, South Africa
51071030	Yarn of combed wool containing >= 85% wool by weight (excl. that put up for retail sale)	40,953	49,883	77,777	98,002	70,212	71.45%	0%	UK, Italy, Japan, Israel, Kore Republic of ,	Italy, Germany, UK, USA, Japan, Vietnam ,China, Turkey, Hong Kong, Bangladesh
19053100	Sweet Biscuits	1,68,192	2,00,586	2,66,483	3,25,337	3,49,015	107.51%	11%	USA UAE Canada Kenya Dominican Republic	USA,UK,Germany France, Netherlands, Belgium, Canada China, Italy, Ireland

73259999	Cast articles of iron or steel, n.e.s. (excl. articles of non-malleable cast iron, and grinding balls and similar articles for mills)	6,65,278	8,39,304	8,78,850	7,91,671	8,33,993	20.23%	7%	USA Germany Italy UK Spain	Italy, Germany USA France, Poland, UK Netherland, Spain Czech Rep., Austria
27081010	Pitch obtained from coal tar or from other mineral tars	11,189	9,416	57,684	84,225	90,370	707.67%	14%	UAE, Indonesia, Egypt, Saudi Arabia, Brazil	UAE, Norway, USA, Bahrain, Australia, Saudi Arabia, Brazil, Belgium, Russian Federation, South Africa
10063010	Semi-milled or wholly milled rice, whether or not polished or glaze	7,484,136	8,361,333	9,400,160	9,915,931	11,227,223	50.01%	12%	Saudi Arabia, Iraq, Benin, Iran, UAE	Indonesia, Philippines, Saudi Arabia, Iraq, USA, Malaysia, Côte d'Ivoire, Iran, UAE
53101013	Woven fabrics of jute or of other textile bast fibres of heading 5303, unbleached	65336	108021	99431	68014	74341/75342	-2	6	USA, Germany, Netherlands, UAE, Saudi Arabia	India, USA, Germany, Netherlands, China, UK, UAE, Canada, Kazakhstan, Italy
73251000	Articles of non-malleable cast iron, n.e.s.	126656	192563	243781	188735	193,062	9	3	USA, Canada, Mexico, Czech Republic, Germany	USA Germany Italy, France, UK, Czech Republic, Canada, Austria, Netherlands, Japan

13.SWOT ANALYSIS OF THE DISTRICT

Studying and examining the different aspects of the district and also collecting data from the primary and secondary sources and the focus group discussions conducted in the district, the SWOT Analysis of the district in terms of export development has been depicted below

<p>STRENGTHS</p> <ul style="list-style-type: none"> • Strong product profile of Mineral Products i.e. Coal Tar, Organic Chemicals, Food Processing products, Textiles & Rice. • Presence of many large and medium enterprises • Huge cold storage and warehouse capacity • Air & Road Connectivity • Existence of organized clusters and food park • Availability of skilled workforce • Production of Agricultural products suitable for exports • Huge involvement in Textile sector with one GI for Dhaniakhali Sarees 	<p>WEAKNESSES</p> <ul style="list-style-type: none"> • Lack of integrated export infrastructure and facilitation • Requirement of Export Facilitation and International Marketing Assistance for MSMEs • Lack of support for R&D, Quality Certifications for clusters • Over dependence of MSMEs on traders in Kolkata/outside the state for markets. • Dependence on money lenders for trade finance.
<p>OPPORTUNITIES</p> <ul style="list-style-type: none"> • Growing International market for Mineral, Chemicals and Processed Food products. • Growing fashion trends for handloom products. • Growing markets for agro and food products • E-commerce exports are gaining momentum • Supportive schemes of both the Central and State Governments for exports 	<p>THREATS</p> <ul style="list-style-type: none"> • Increasing trade uncertainty in global markets. • Emergence of ESG based non-tariff barriers in exports • Over-congestion of the cluster due to horizontal expansion • Draft issues of riverine port hampering logistics

- | | |
|--|--|
| | <ul style="list-style-type: none"> • Poor availability of vessels for smooth movement of goods • Lack of facilities in the clusters leading to migration of value addition to other districts/states |
|--|--|

14.EXPORT CHALLENGES IN HOOGLY DISTRICT

Hoogly district is one of the industrialized districts of the state with the presence big private sector players. It has also very active agricultural sector and millers. The district is known for its highly diversified product capabilities including manufacturing, agriculture and tertiary sectors. The major contributions for exports from the district is accounted by Base metal (29%) and Chemicals (25%) followed by Jute related products (18%), food processing and woolen yarn (8%) respectively which are predominantly accounted by the MSMEs. Though the export as captured in the trade data indicates more exports of metal, chemicals, jute and biscuits, there are considerable exports of hand loom garments, Zari worked garments and other agricultural products are exported through traders from outside the district or state. The broad issues for the exported and exportable potential products include R&D and testing facilities, limited market access, and lack of awareness about modern and effective production practices among MSMEs.

Infrastructure and logistics

- Warehouse and cold storage facilities: The district has ample industrial parks, logistics parks, warehouses and cold storage facilities. However, most of the facilities are run by private entrepreneurs without proper guidance or policies leading to exploitation of MSME users with differential rentals and other charges.
- Pack house facility is required for food, agricultural and horticultural products from the district.
- The road transport issues and congestion in Dankuni is a major barrier for smooth flow of logistics. It is an important industrial town and many firms are dependent on the road transport. The heavy vehicles movement in Dankuni remained as a challenge in logistics.

- Lack of synchronized multi-modal transport hampers the logistics movement in the district in spite of having road, rail and in-land waterways.
- Draft issues of riverine port hampering logistics and turnaround times which ultimately increase the cost of transport.
- Poor availability of vessels for smooth movement of goods leads to considerable delays in shipments and delivery.
- Growing vessel charges and surcharges leading to alternate port selection.

Market access and finance

- Difficulty reaching export markets: Exporters, particularly small artisans and handicraft producers, garment producers and other MSMEs and farmers have trouble accessing international markets due to lack of awareness and hence depend on the traders from different states and Kolkata which not only denies direct export but also fetches low price. The artisans of zari and other handicraft clusters need training even in the basic business functions. The GI for the Dhaniakhali Sarees remained unexplored for exports.
- Limited access to formal credit: Financing challenges, such as high initial investment costs for upgrades to infrastructure or technology, are significant barriers for many small producers and SHGs which requires creation of common facilitation centres. Most of the MSMEs are also reluctant to have the GST registrations fearing compliance cost. Hence the Mahajans (Money Lenders) play a major role in the business operations of the clusters.
- Weak export strategy: Though government initiatives exist to boost exports, there are gaps in the district-level execution of a robust strategy for products with high export potential, such as musical instruments, shuttle cock, optical lens and handicrafts. The SEFC should make specific interventions to implement the district level initiatives.

Operational and Environmental challenges

- The concentration of metal and chemical firms in this district and the processes followed raise considerable concerns on their ESG compatibility especially for exports.
- Readymade garment units and handlooms in the MSME clusters of the district suffers from lack of quality raw materials and poor use of technology and scale.
- Climate change impacts: Irregular rainfall, frequent floods, and coastal erosion pose significant risks to potato and other agriculture farming. Unpredictable weather directly disrupts crop yields.

- Though there are storage facilities they provide more standalone services which could bring in service bundling along with storage like certifications, testing etc.
- Lack of modern technology: Many producers in industrial clusters lack modern machinery and technological knowledge, which hinders productivity and the adoption of scientific production methods.

15.GIST OF THE ANALYSIS

The following are the salient points which emerge from the above discussions:

- The major contributions for exports from the district is accounted by Base metal (29%) and Chemicals (25%) followed by Jute related products (18%), food processing and woolen yarn (8%) respectively which are predominantly accounted by the MSMEs. Though the export as captured in the trade data indicates more exports of metal, chemicals, jute and biscuits, there are considerable exports of hand loom garments, Zari worked garments and other agricultural products are exported through traders from outside the district or state.
- Opportunities for exports of handloom, handicrafts, agricultural and food products are high.
- The district has sufficient warehouse and cold storage facilities but function more arbitrarily as they are controlled by entrepreneurs without any uniform policies.
- Several units located in the clusters are majorly acting as feeder units for MSMEs located in other districts. Moreover, most of the units in base metal and chemical products are susceptible to ESH compliances.
- Most of the cluster items produced from the district by MSMEs are suitable for e-commerce exports.
- Exports of MSME products of the district are mostly routed through traders in Kolkata/outside the state.

16.EXPORT ACTION PLAN SUGGESTED

Based on the above facts, analysis of the data and the input from the stakeholders, the following action plan is suggested. The action plan also indicates the desired output of the strategic actions, the responsible agency and the proposed intervention/tool for implementation. It has also been highlighted the activity/activities where a DPR may be required.

Category	Strategic Action	Output Desired	Suggested Agency	Instrument/Intervention
	Logistics issues at Dankuni	Smooth flow of transport and fast movement of heavy vehicles	State Govt + GOI	It is proposed to create a multimodal transport hub at Dankuni which can better use the road, rail and inland water ways for goods movement. The state may take it up with the concerned ministry at the center under the transport corridor schemes.
	Foreign Post office facility in for E com Exports	Ease of E-Com exports through Dak Niryat Kendra	Postal Dept. + Customs	Mobile foreign post office visiting the district on designated days
	Strengthening the processes of Warehouse and Cold Storage facilities available in the district.	Utilization by producers and exporters with value added services for testing, packing and packaging etc	State Govt	The Warehouses should have proper and uniform policies and may provide licensed or franchised testing and packaging services through empanelled vendors.
	Handholding for direct exports of MSMEs	Increased direct exports from the state	State Govt + GoI	Use acceleration services by institutions like IIFT under suitable schemes.

				The State Govt. may also launch export incubation fund for supporting the Direct Exports.
	Pack House, Testing and Certification Services	The pack house is required in the district for the food, agri and horticultural products for increased quality of products and their direct exports.	State Govt.	The Pack house facility may be created and presented for appropriate funding by Government Resources. (DPR)
	Training on effective practices and packaging for MSME handicraft and handloom producers, majorly Zari and embroidered garments.	Improved productivity and market reach	State Govt.	The Ministry of MSME&T may take up suitable training facilities for the MSMEs and SHGs with expert agencies. Similarly a suitable facilitation for packing and packaging practices may be arranged by the Dept. of MSME. The products identified for the same includes products made of Zari and embroidered garments, metal crafts etc
	Product and district specific capacity building on exports of MSMEs	Direct exports from MSMEs to diverse markets	State Government	The existing SEFC should undertake time bound product and district specific capacity building of MSMEs in

				handicrafts and handloom products.
--	--	--	--	------------------------------------

17.ANNEXURES

Table A1: Details of the District Administrator⁸

District Administrator			
Name	Designation	Email	Phone
Smt. Mukta Arya ,IAS	District Magistrate & Collector	dm-hoog[at]nic[dot]in	03326802044

Table A2: Details of the Additional District Magistrate⁹

Additional District Magistrate			
Name	Designation	Email	Phone
Sri. Tarun Bhattacharyya , WBCS (Exe)	Additional District Magistrate (General)	admghoog[at]gmail[dot]com	03326802043
Sri. Amitendu Paul, WBCS (Exe)	Additional District Magistrate (Development)	adm-development[at]hooghly[dot]nic[dot]in	03326802317
Sri Anuj Pratap Singh, IAS	Additional District Magistrate(Zilla Parishad)	aeohzp[at]gmail[dot]com	03326803266
Ms. Tamil Oviya S , IAS	Additional District Magistrate (District Land & Land Reforms Officer)	dllrohugli[at]gmail[dot]com	03326802098

⁸Data taken from official district website of Hooghly

⁹ Data taken from official district website of [Hooghly](#)

Table A3: Details at the Sub-Division level¹⁰

AREA	SUBDIVISION	TYPE	NO. OF GRAM PANCHAYATS	NO. OF CENSUS TOWNS
Chinsurah & Bansberia Municipality	Chinsurah Sadar	Municipality	-NIL-	-NIL-
Balagarh	Chinsurah Sadar	CD Block	13	4
Mogra	Chinsurah Sadar	CD Block	10	8
Dhaniakhali	Chinsurah Sadar	CD Block	18	0
Pandua	Chinsurah Sadar	CD Block	15	3
PolbaDadpur	Chinsurah Sadar	CD Block	12	0
Chandannagar Municipal Corporation	Chandannagar	Municipal Corporation	-NIL-	-NIL-
Bhadreswar, Champdani & Tarekeswar Municipality	Chandannagar	Municipality	-NIL-	-NIL-
Haripal	Chandannagar	CD Block	15	1
Singur	Chandannagar	CD Block	16	1
Tarakeswar	Chandannagar	CD Block	10	0
Srerampore, Uttarpara, Konnagar, Rishra, Dankuni, Baidyabati Municipality	Srerampore	Municipality	-NIL-	-NIL-
Chanditala I	Srerampore	CD Block	9	2
Chanditala II	Srerampore	CD Block	11	10
Jangipara	Srerampore	CD Block	10	0
Uttarpara	Srerampore	CD Block	6	6
Arambag Municipality	Arambag	Municipality	-NIL-	-NIL-

¹⁰Taken from [Brief Industrial Profile of PURBA MIDNAPUR DISTRICT WEST BENGAL](#), by MSME-Development Institute Kolkata.

AREA	SUBDIVISION	TYPE	NO. OF GRAM PANCHAYATS	NO. OF CENSUS TOWNS
Khanakul I	Arambag	CD Block	13	0
Khanakul II	Arambag	CD Block	11	0
Goghat I	Arambag	CD Block	8	0
Goghat II	Arambag	CD Block	9	0
Pursurah	Arambag	CD Block	8	0
Arambag	Arambag	CD Block	15	0

Source: Wikipedia

Table A4 : Cold storages in the district

S.No	Name of the Cold Storage	Location & Address	Total Capacity	Type of Cold Storage	Registration under
1	Arambagh Himghar Pvt. Ltd.	Village-Daulatpur, Po-Chandur, Ps-Arambagh, Hoogly-712602 (West Bengal)	86582 Qtl	Potato	NHB
2	Pallishree Cold Storage Ltd.	Village-Telipara, Post- Chandur, Ps-Arangbag, Distt.-Hoogly-712602, (West Bengal)	53233 qtls	Potato	NHB
3	Pallishree Cold Storage Ltd.	Village-Telipara, Post- Chandur, Ps-Arangbag, Distt.-Hoogly-712602, (West Bengal)	53233 qtls	Potato	NHB
4	Pallishree Cold Storage Ltd.	Village-Telipara, Po-Chandur, Ps-Arambag, Distt-Hoogly-112602	53233 qtl	Potato	NHB
5	Ratanpur Cold Storage Pvt. Ltd.	Village-Jamerberia, Po-Singur, Distt.-Hoogly, (WB)	137500 qtls	Potato	NHB
6	Kashinath Cold Storage	Sasmal Pada, P.O.-Baidyabati, Hoogly-712222 (WB)	42000 qtls	Potato	NHB
7	GAF Marketing	Vill.- Beraberi, P.S- Singur, Dist.- Hugli.	2748 MT	Multipurpose	NHB
8	Arambagh himghar pvt. Ltd.	Vill-Daulatpur, Po-Chandur, Ps-Arambagh, Distt.-Hoogly(Pin-712602), West Bengal	86582 Qtl	Potato	NHB

9	Pallishree Cold storage ltd.	Vill-Telipara, P.o.-Chandur, Ps-Arambagh , Distt.-Hoogly, Pin-712602, West Bengal	53233 Qtl	Potato	NHB
10	Abhiman cold storage pvt.ltd.	Vill-Bagbari, Po-Baligori, Distt.-Hoogly-(PIN-712410), West Bengal	1,40,000 Qtl	Potato	NHB
11	Chittaranjan coldstorage pvt. Ltd.	VPO-Masat, Distt.-Hugli, West Bengal (PH-03212-241241)	2,80,000 qtl	Potato	NHB
12	Rounak Cold Storage Pvt. Ltd.	vill.- Mogra, P.S- Mogra, Dist.- Hugli.	3274mt.	Multipurpose	NHB
13	Rajballavi Himghar	Vill-Gobati, Taluka- Haripal, Distt.-Hoogly	96000 qtls	Potato	NHB
14	Abhiman Cold Storage Pvt. Ltd.	Village-Bagbari, Po-Baligori, Distt.-Hoogly, West Bengal	140000 qtls	Potato	NHB
15	Chittaranjan Cold Storage Pvt. Ltd.	Vill & Post - Masat, Distt.-Hoogly, (WB)	280000 qtls	Potato	NHB
16	Baba Satnarayan Himghar Pvt. Ltd.	Vill-Sahapur, Teh-Tarakeshwar, Distt.-Hugli, (W.B.)		Potato	NHB
17	Baktimayi Cold Storage	Vill-Mohanbati, Po-Nachipur, Distt.-Hoogly, (WB), Ph-03212274286	1392 MT	Potato	NHB
18	Navina Cold Storage Pvt. Ltd	Vill-Kanadia, Po-Keshab Chakk, Ps-Tarkeshwar Distt.-Hugli, (WB)	124000 packets	Potato	NHB
19	Devendra Cold Storage Pvt. Ltd.	VPO-Pusurah, Distt.-Hugli-712401, Ph-03212-255180	210000 packets	Potato	NHB
20	Kalapara Kishan Himghar Pvt. Ltd.	Vill-Kelepara, Po-Ghargohal, Distt.-Hugli (WB)	294000 packets	Potato	NHB
21	Damodar Cold Storage	Vill-Sinti, Po-Guti, Distt.-Hugli, (WB)-712408 , Ph-03214-297693	45360 qtls	Potato	NHB
22	Chinsurah Cold Storage	Station Road, Chinsurah, Distt.-Hugly-712102 (W.B), Ph-033-26865177/26865113	200000 qtls	Potato	NHB
23	Mallick Cold Storage	Vill-Ratanpur, Tehsil-Singur, Distt.-Hugli, (West Bengal), Ph-033-26300465		Potato	NHB
24	Laskar Cold Storage Pvt. Ltd.	Vill-Durgapur (Bokirole), Po-Nalikal, Distt.-Hoogly (W.B.)-Ph-032-12233087	142000 qtls	Potato	NHB
25	Sachimata Cold Storage	Village-Kamar Kundu, Taluka-Hugli, Dist-Hugli (West Bengal)	103458 qtls	Potato	NHB
26	Mahaprabhu Cold Storage Pvt. Ltd.	Village-Harua, Taluka-Gholdigrui, Dist-Hugli (West Bengal)		Potato	NHB
27	Champadanga Cold Storage Pvt. Ltd.	Village & Post-Muktarpur, P.s-Tarakeshwar, Dist-Hugli (West Bengal)	40271 qtl	Potato	NHB

28	Haragauri Himghar	Village & Po-Muktarpur, Dist-Hugli (West Bengal)	50000 qtl	Potato	NHB
29	Haraparvati Cold Storage Pvt. Ltd.	Village/Po/Ps-Pursurah, Dist-Hugli, (West Bengal)	240000 Bags	Potato	NHB
30	Himalaya Cold Storage Pvt. Ltd.	Village-Harua, Taluka-Jholdigrui, Dist-Hugli (West Bengal)	169000 qtl	Potato	NHB
31	Bhairavi Cold Storage	VPO-Dilakash, Ps- Jangipada, Distt.-Hugli (West Bengal)-Pin-712404	24000 packets	Potato	NHB
32	Vikrant Refrigeration Pvt. Ltd.	Village-Torah, Po-Antpur, Distt.-Hugli-712429 (WB)	145000 qtl	Potato	NHB
33	Sree Jaganath Himghar Pvt. Ltd.	Village-Ilampur, Dillakas, Taluka-Jangipara, Dist-Hugli (West Bengal)	210000 qtl	Potato	NHB
34	Bibekananda Himghar Pvt. Ltd.	Vill/Po-Mandra, Dist-Hugli (West Bengal)		Potato	NHB
35	Pareshnath Cold Storage	Vill/Po-Bhandarhati, Dist-Hugli (West Bengal)	143752.74 qntl	Potato	NHB
36	Pioner Himudyog Pvt. Ltd.	Village-Sardarpur, Po-Baliguri, Dist-Hugli (West Bengal)	160564.5 qntl	Potato	NHB
37	Radhamadhav Cold Storage Pvt. Ltd.	Village-Bagbari, Po-Baliguri, Dist-Hugli (West Bengal)	70000 qntl	Potato	NHB
38	Krishak Bandhu Samabay Himghar Ltd.	Village-Paschimpara, Po-Nimdangi, Dist-Hugli (West Bengal)	40000 qtl	Potato	NHB
39	Tarakeshwar Cold Storage Pvt. Ltd.	Vill/Po-Baliguri, Dist-Hugli (West Bengal)	63294 qntl	Potato	NHB
40	Uco Farmers Service Co-Operative Society Ltd.	Vill/Po-Muktarpur, Dist-Hugli (West Bengal)	4000 mt.	Potato	NHB
41	Taraknath Cold Storage Company Pvt. Ltd.	Vill-Batadbandh, Po-Ponishewa, Dist-Hugli (West Bengal)	259000 bags	Potato	NHB
42	Matangini Cold Storage Pvt. Ltd.	Vill-Baladbandh, Po-Panisheola, Dist-Hugli (West Bengal)	102000 qntl	Potato	NHB
43	Panchanan Cold Storage	Vill-Olipur, Po-Olipur-Nayanagar, Dist-Hugli (West Bengal)	103000 qntl	Potato	NHB
44	Bhandarhati Cold Storage	Village-Mogalpur, Po-Bhandarhati, Dist-Hugli (West Bengal)	100000 qtl, 165328 pckts	Potato	NHB
45	Basudevpur Cold Storage	Village-Basudevpur, Po-Bramhanpara, Dist-Hugli (West Bengal)	90000 qntl	Potato	NHB
46	Vivek Cold Storage Pvt. Ltd.	Vill/Po-Jangipada, Dist-Hugli (West Bengal)	53118 qtl	Potato	NHB
47	Singur Cold Storage	Vill & Tehsil -Singur, Distt.-Hoogli (W.B), Ph-033-26301217	233000 qtls	Potato	NHB
48	Shree Bishnu Potato Storage Pvt. Ltd.	Village-Jangalpara, Tehsil-Pursura, Distt.-Hugli (WB)		Potato	NHB

49	Koachmai-Bonagone Sanabag Krishiunnayn Samiti Ltd	At-Bonagori, Po-Boinchi, Distt.-Hugli (West Bengal), Ph-03422263933, 03213269322		Potato	NHB
50	S. N. Cold Storage Pvt. Ltd.	Village-Hamiragachi, Po-Bramhanpura, Distt.-Hugly-712405 (WB)	104600 qtl	Potato	NHB
51	New Bholanath Cold Storage Pvt Ltd.	VPO-Chilladangi, Distt.-Hugli (WB)	42000 qtls	Potato	NHB
52	Nalikul Cold Storage Pvt. Ltd.	Enayatpore(4 No. Railway Gate), Tehsil-Singur, Distt.-Hugli (West Bengal), ph-03212233276	204822 qtl	Potato	NHB
53	Alaknanda Cold Storage	Vill-Pantra, Po- Mushapur, Distt.-Hugli-712405, (West Bengal), Ph-032-12211666	140000 qtls	Potato	NHB
54	Kashinath Mandal Cold Storage	Vill & Post- Ramnarayanpur, Distt.-Hugli (West Bengal)	140000 qtls	Potato	NHB
55	Tarkeshwar Pursurah Co-Operative Cold Storage Ltd.	Vill-Champadanga, PO-Champadanga, Distt.-Hoogly-712401, (West Bengal)	10000 MT	Potato	NHB
56	Annapurna Himghar Pvt. Ltd.	Vill-Tripon, Po-Rahimpur, Hugli, (West Bengal)-Ph-03212-259053	127000 qtl	Potato	NHB
57	Dhania Khali thana Samabay Himghar	Village-Boso, Po-Boso, Ps-Dhaniakhali, Distt.-Hugli (WB)-712302	80000 bags	Potato	NHB
58	Jalaram Cold Storage	V&P- Dhaniakhali, Distt.-Hugli, Pin-712302 (West Bengal)	140000 qtl	Potato	NHB
59	Annada Cold Storage	Village-Bansipur, Po-Chopa, Distt.-Hugli (712308) West Bengal	64116 qtls	Potato	NHB
60	Damas Cold Storage	VPO-Gopinagar, Distt.-Hugli, (West Bengal) Pin-712423	107608 qtl	Potato	NHB
61	Ratan Cold Storage Ltd.	VPO-Dasghara, Distt.-Hugli (WB)		Potato	NHB
62	Khanpur Cold Storage Pvt. Ltd.	Vill-Banshipur, Po-Khanpur, Distt.-Hugli-712308, (WB), Ph-03213-258268	200000 qtl	Potato	NHB
63	Narayanpur Cold Storage	Village-Narayanpur, Taluka-Tarakeswar, Distt.-Hugli (West Bengal)	101000 qtls	Potato	NHB
64	Dahalania Cold Storage	Vill-Kotalpur, Po-Kumrul, Distt.-Hugli, (West Bengal) Ph-03212-272288		Potato	NHB
65	Ashutosh Cold Storage	9, Bardhawan Road, Bhanjipur, Distt.-Hugli, West Bengal (Ph-03212-276188)	77118 qtls	Potato	NHB

66	Addya Sakti Cold Storage Pvt. Ltd.	Village-Narayanpur, Taluka-Tarakeswar, Distt.-Hugli (WB), Ph-03212-276229	142000 bags	Potato	NHB
67	Shri Balaji Cold Storage	Vill-Saota, Po-Bhuerah, Distt-Hugli, (West Bengal), Ph-9434972132	140000 qtl	Potato	NHB
68	Balaram Cold Storage Pvt. Ltd.	Village-Banna, Po-Routpur, Distt.-Hugli (West Bengal) Ph-03212272256 / 273138	272000 Packets	Potato	NHB
69	Netai Charan Dey Cold Storage	VPO-Gopinagar, Ps- Dhaniakhali, Distt.-Hugli, (West Bengal), Pin-712423, Ph- 03212-272247	163000 qtls	Potato	NHB
70	Nishapati Cold Storage Pvt. Ltd.	Vill-Rajipur, Po-Kananadi, Distt.-Hugli (WB) Ph-03213-255328	90118 qtls	Potato	NHB
71	Harinkhole Ice & Cold Storage Ltd.	Vill-Saota, Po-Bhuerah, Distt.-Hugli, (West Bengal), Ph-03212-210128	100000 qtls	Potato	NHB
72	Umesh Cold Storage	Village-Amgram, Po-Dhinkhola, Distt.-Hugli (West Bengal), Ph-9434102182	80000 qtls	Potato	NHB
73	Himadri Industry Ltd.	Vill-Shyamgram, Po-Harinkola, Ps.Arambagh, Distt.-Hugli (WB), Ph-09434022896	350000 qtls	Potato	NHB
74	Nirmal & Navin Cold Storage	VPO-Dakhinerasulpur, Distt.-Hugli (WB)-712413, Ph-03211-259257	520000 packets	Potato	NHB
75	K. T. P. S. & B. S. Himghar ltd.	Vill-Krishna Nagar, Po-Nangulpara, Distt.-Hugli, (WB) Pin-712406, Ph-03211-266395	140000 qtl	Potato	NHB
76	Gourhati Samabay Himghar Samiti Ltd	VPO-Gourhati, Distt.-Hugli (WB), Ph-03211-261211	10000 MT	Potato	NHB
77	Boinchee CADP FSCS Ltd.	Vill-Bantika, Po-Boinchi, Distt.-Hugli, WB, Ph- 03213-269270	139000 qtl	Potato	NHB
78	Hoogly Cold Storage Pvt. Ltd.	VPO-Tinna, Distt.- Hugli, WB, Ph-03212-266362	206000 Packets	Potato	NHB
79	Kochmali Boragori Samabay Himghar	Vill-Boragori, Po-Boinchee, Distt.-Hoogly-712134, (WB), PH-03213269322	200000 bags	Potato	NHB
80	K. R. S. Cold Storage	VPO-Boinchi, Distt.-Hugli, (WB), PH-03213-269240	130000 qtl	Potato	NHB
81	Murli Cold Storage	VPO-Boinchee, Distt.-Hugli, WB, Pin-712134, Ph-03213-269231	480000 bags	Potato	NHB
82	Boinchee Cold Storage & Industry Pvt. Ltd.	VPO-Boinchi, Distt.-Hugli, WB, Ph-03213-269249	55516 qtl	Potato	NHB
83	Snehalata Cold Storage	Vill-Hodla, Po-Nakalpur, Distt.-Hugli, West Bengal, Ph-03213-240346	400000 bags	Potato	NHB

84	Kalasona Himghar Udhog Pvt. Ltd.	Village-Purvaamarpur, Po-Dhulepur, Distt.-Hugli (WB)-712616, Ph-03211-220731	338320 bags	Potato	NHB
85	Annada Cold Storage Pvt. Ltd.	Village-Sahalapur (Naisarai), Ps-Arambag, Distt.-Hugli (West Bengal), Ph-03211-252501/536, 03211	140000 qtl	Potato	NHB
86	Kailashpati Cold Storage Pvt Ltd.	Vill-Dhakin Rashulpur (Kable), Po-Dhakhin Rashulpur, Distt.-Hugli (West Bengal), Ph-03211-259244	268000 Bags	Potato	NHB
87	Maa Bameswari Cold Storage Pvt. Ltd.	VPO-Samantakhanda, Distt.-Hugli (WB), ph-9434055332	140000 qtl	Potato	NHB
88	Gangadhar Cold Storage	Vill-Narharbati, Po-Bengai, Distt.-Hugli (WB) Ph-03211-246265	140000 qtl	Potato	NHB
89	Maa Kankali Cold Storage Pvt. Ltd.	VPO-Kamarpukur, Distt.-Hugli, West Bengal, Ph-03211-245027		Potato	NHB
90	Lakshmi Mala	Vill-Naisarai, Distt.-Hugli, West Bengal (Mob-9593597891)		Potato	NHB
91	Prakash Poddar Heemghar Pvt. Ltd.	Village-Kantagoria, Po-Singlapur, Ps-Goghart, Distt.-Hugli (West Bengal), Ph-03211-242211		Potato	NHB
92	Adyashakti Himghar Pvt. Ltd.	Village-Parbatipur, Po-Dwarhatta, Taluka-Haripal, Dist-Hugli (West Bengal)	190000Qt	Potato	NHB
93	Kedarnath Cold Storage	Village-Gajarmore, Po-Dalapatipur, Dist-Hugli (West Bengal)	85000 Quintal	Potato	NHB
94	Dadaji Agro Ice & Cold Storage Pvt. Ltd.	Village-Jarura, Deli Road, P.s-Polba, Dist-Hugli (West Bengal)	5000	Multipurpose	NHB
95	Rabindra Cold Storage Pvt. Ltd.	Village/Po-Pursurah, Dist-Hugli-712401 (West Bengal)	236000 qtl	Potato	NHB
96	Sree Gouranga Himghar Pvt. Ltd.	VPO-Seakhala, Distt.-Hugli, West Bengal, Ph-03212-266317	159000 qtl	Multipurpose	NHB
97	Bhaktimoyee Food Processors (A Unit of M/S Bhaktimoyee Cold Storage (P) Ltd.	Vill. Mohanbati, P.O. Nachipur, Tarakeswar, Dist:-Hooghly, Pin712414.	1392 mt	Multipurpose	NHB
98	Lokenath Multipurpose Himghar Udyog (P) Ltd	Village - Mohistikari, PS - Haripal	4000 mt.	Multipurpose	NHB
99	Bhaktimoyee Cold Storage Private Limited	Village - nachipur, Mohanbati, PS - Tarakeswar, Distt. Hooghly	12620 mt	Multipurpose	NHB
100	Sparkle Multipurpose Cold Storage (P) Ltd.	At-Uttar Dadpur, VillKanthalia, Block- Purba Dadpur, Hooghly	2432 mt	Multipurpose	NHB

101	Amiyaprabha Das Bohumukhi Himghar (P) Limited	Village & PO - Bhastara, PS - Gurap, District - Hooghly, Pin - 712 303	3500 mt	Multipurpose	NHB
102	NDM SEAFOOD PROCESSORS AND EXPORTERS PRIVATE LIMITED HOSENABAD	VILLAGE MOGRA DIST- HOOGHLY, PIN-, West Bengal	4700 MT	Frozen	MPEDA
103	Ascon Agro Products Exporters & Builders Pvt. Ltd.			Fruits & Vegetables	MOFPI
104	Revati Commercial Pvt. Ltd			Fruits & Vegetables	MOFPI
105	NDM Sea Food Processors and Exporters Private Limited			Marine & Fishery	MOFPI

Source : National Horticulture Board, MOFPI and MPEDA

Table A5 : Warehouse in the District

WH Name	Address	Capacity(in MT)
KPS Agro Products	Aymapaharpur, Tarakeswar	3500
SATYANARAYAN FLOUR INDUSTRIES	CHANDUR, TARAKESWAR	2020
Central Warehouse Goara	Central Warehouse Goara, PO: Boinchigram, Distt. - Hooghly	5000
SWC TARAKESWAR	WARD NO. 12, BAJITPUR, P.O. & P.S.- TARAKESWAR,	10800
RWC Dankuni	Railside warehousing complex, Near GSS Office, Dankuni, Hooghly	9421
B R GRAINS PVT LTD	DHANIAKHALI CHINSURA ROAD, GOTU BAZAR,	2154
SHRI DURGA FLOUR MILL (Baganbati)	Village Baganbati, Post Malia,	794
RIDF Godown – Balagarh, Dakshin Chandra, P.O. – Sripurbazar,	P.S. – Balagarh, Dist.- Hooghly,	5000
RIDF Godown – Singur, 2No. Ratanpur;	P.O. & P.S. – Singur, Dist Hooghly,	5000
RIDF Godown JangiPara , vill + PO +Ps – Jangipara,	Dist – Hooghly ,	5000
RIDF Govt. Food Godown, Dhaniakhali	Simla Agricultural Farm, Kankarakuli More ,PO – Kananadi ,	5000

Kundu's Hired Godown at Arambag	Plot No.–151,157,166, Khatian No. – 234,Holding No. 397, Mouza- Arambagh	1404
Sekh Salim	Vill. Mouza & Police Station – Gurap, Dhaniakhali Sub Division, Dist. – Hooghly	1687

Source : West Bengal State Warehouse Corporation & Warehouse Development Regulatory Authority

Table A6: LAND UTILIZATION STATISTICS¹¹

Classification of Land & Other Land Details

Land use pattern of the district	Area ('000 ha)	%age of geographical land
Geographical Area	313.06	NA
Cultivable area	220.05	70.29
Forest area	0.53	0.17
Land under nonagricultural use	89.2	28.49
Permanent pastures	0.05	0.02
Cultivable wasteland	1.33	0.42
Land under Misc. tree crops and groves	1.89	0.60
Barren and uncultivable land	0.11	0.04
Current fallows	0.34	0.11
Other fallows	0.1	0.03

Agricultural land use

¹¹ Data compiled from Agricultural Contingency Plan, Department of Agriculture and Farmers Welfare
Source:-https://agriwelfare.gov.in/sites/default/files/WestBenga%207-Hooghly-31.12.2011_0.pdf
Source:- <https://hooghly.nic.in/district-stat/#1624965651273-ce52e2e7-e758>

Agricultural land use	Area ('000 ha)	Cropping intensity %
Net shown area	219.91	249.45
Area sown more than once	328.67	
Gross cropped area	548.58	

TABLE A7: CROP-WISE YIELD AND PRODUCTION DATA¹²

SR. NO.	CROP	2022 - 2023		
		Production (Tonnes)	Area (Hectare)	Yield (Ton / Ha)
1	Potato	26,99,031	91,981	29.34
2	Rice	8,16,833	2,46,793	3.31
3	Jute	2,56,229	11,643	22.01
4	Groundnut	60,930	20,513	2.97
5	Sesamum	39,715	38,106	1.04
6	Sugarcane	32,866	416	79
7	Rapeseed & Mustard	8,947	9,458	0.95
8	Maize	2,153	339	6.35
9	Masoor	1,042	2,619	0.4
10	Moong (Green Gram)	1,011	882	1.15
11	Peas & beans (Pulses)	832	782	1.06
12	Mesta	751	53	14.17
13	Khesari	404	378	1.07
14	Gram	69	49	1.41
15	Urad	67	93	0.72
16	Arhar/Tur	62	39	1.59
17	Wheat	21	7	3
18	Horse-gram	3	6	0.5

TABLE A8: INDUSTRIAL UNITS IN HOOGHLY

List of Large Scale & Public Undertaking Units in Hooghly District:

SR. NO.	NAME OF THE UNIT
---------	------------------

¹² Data compiled from Directorate of Economics and Statistics

1	Aditya Birla Insulators
2	B. D. Castings Ltd. 3
3	Calcutta Springs Ltd
4	Down Stream Units of HPL(2 Units)
5	Himadri Chemicals & industries Ltd. (Mahistikry unit)
6	Himadri Chemicals & industries Ltd.
7	Himadri Chemicals & industries Ltd. (HaripalUnit)
8	IFB Agro Industries Ltd.
9	J.P Flour Mills Pvt. Ltd.
10	Jute Mills (6 Units)
11	Kessoram Rayon
12	J.K. Steel
13	Tribeni Tissues
14	Hindustan Development Corpn. Ltd.
15	ICI India Ltd.
16	Indian Rayon & Industries Ltd
17	India Foils Ltd.
18	Kusum Industries
19	Hyderabad Industries Ltd.
20	Tirupati Ferro Alloy Udyog(P) Ltd.
21	Arcvac Forge Casting Pvt. Ltd.
22	Ascon Agro Products Exporters & Builders Pvt. Ltd.
23	Bio-caps India Ltd.
24	Brand Alloys Ltd.
25	Global Automobiles Pvt. Ltd.
26	Himadri Chemicals & Industries Ltd.
27	Hooghly Alloy & Steel Ltd.
28	JP Flour Mill Pvt. Ltd.
29	Jayashree Textiles
30	Xenitis Infotech Pvt. Ltd.

List of Medium Scale & Public Undertaking Units in Hooghly District:

1	Angus Works	32	Nezone Tubes Ltd.
2	Nelco Chemicals	33	Tol India Ltd.
3	Mother Dairy	34	Walter Craven Ceramic project
4	Window Glass	35	Brand Alloys Ltd.
5	Eastern Paper Mill	36	Jainex Metallics Ltd.
6	Lagan Jute Machinery	37	Star Battery
7	Durgapur Maliable Casting	38	Hindustan Motors Ltd. (Modernization)
8	Light Machinery	39	Hooghly Ispat Ltd.
9	East India Four Mills(P) Ltd.	40	Paceman Sales Promotion Pvt. Ltd

10	High Rise Rollar Flour Mill (P) Ltd.		41	Vikrant Alloys & Forgings Ltd.
11	Panchanan Cold Storage(P) Ltd		42	Bhusan Industries Ltd.
12	SWIL Ltd.		43	Brand Alloys Ltd.
13	The General Industries Society Ltd.		44	Hindustan Seals Ltd.
14	India Foils Ltd.		45	Hindustan National Gloss & Ind. Ltd.
15	SS Brick Industries (P) Ltd		46	Leadstone Energy Pvt. Ltd.
16	Pashupati Seohung Ltd.		47	Mukund Foods Pvt. Ltd.
17	Pulver Ash Ltd.		48	Ravi Timber & Allied Products
18	The Phosphate Co. Ltd.		49	Nezone Steel Industries
19	Niala, Khanyan		50	Nezone Ispat Tubes
20	Lead Stone Energy Ltd.		51	Oriental Trimex Ltd.(I)
21	Bishnu Potato Storage (P) Ltd.		52	Bajrangabali Vaniya Pvt. Ltd.(I)
22	R S Ispat (P) Ltd.		53	J.P. Flour Mill Ltd.
23	Ruia Chemicals & Industries		54	Oriental Trimex Ltd.(II)
24	Adhunik Steel (P) Ltd.		55	Tulsyan Flexsys Pvt. Ltd.
25	Eastern Jute Wool Tex(P) Ltd.		56	Bajrangabali Vaniya Pvt. Ltd.(II)
26	Ganesh Steel & Alloys Ltd.		57	Sangrila Infrastructure Consultancy Pvt. Ltd.
27	Keshavilal Khandewal Properties Ltd.		58	Indo Polypacks Pvt. Ltd.
28	Premier Metallurgical (P) Ltd.		59	Nissan Ferro Cast Pvt. Ltd.
29	Anmol Biscuits (P) Ltd.		60	Jaypee Alloy Steel Castings Pvt. Ltd.
30	Khanakul Himghat (P) Ltd.		61	Sona Biscuits Ltd.
31	Multi Serve Rolls (P) Ltd.			

Table A9: LIST OF MSME CLUSTERS¹³

SR. NO.	CLUSTER SECTOR	NAME OF CLUSTER	ACTIVITY OF CLUSTER	NO. OF UNITS	NO. OF EMPLOYEES
1	OPTICAL LENSE GRINDING	TARAKESWAR OPTICAL LENSE GRINDING CLUSTER	OPTICAL LENSE GRINDING	70	170
2	PLASTIC PRODUCTS	BANDEL MOSQUITO NET CLUSTER	BABY MOSQUITO NET MFG	27	135
3	PLASTIC PRODUCTS	GUPTIPARA PLASTIC AND ARTIFICIAL FLOWER CLUSTER	MFG OF ARTIFICIAL PLASTIC FLOWER AND ACCESSORIES	40	400
4	PLASTIC PRODUCTS	DUMURDAHA GARDEN NET MANUFACTURING CLUSTER	GARDEN NET MFG	35	172
5	TEXTILES & READYMADE GARMENTS	BABNAN CHIKON AND EMBROIDERY CLUSTER	HAND EMBROIDERY	180	500
6	JEWELLERY	SINGUR CASTING AND IMITATION JEWELLERY	MFG OF CASTING IMITATION JEWELLERY	38	1100

¹³Data taken from Department of MSME

7	BASIC METAL & ALLOY INDUSTRIES	BALI GOGHAT BRASS METAL CLUSTER	MFG OF DOMESTIC GHOTI, GHARA MADE OF BRASS	78	150
8	PRINTING	SRERAMPUR SILK SCREEN PRINTING CLUSTER	PRINTING OF SILK SARI AND SCARFS	38	12000
9	TEXTILES & READYMADE GARMENTS	BALAGARH HANDLOOM CLUSTER	HANDLOOM WEAVING ON JAMDANI AND TANGAIL SAREE AND SALE	1	368
10	TEXTILES & READYMADE GARMENTS	GOPALPUR HANDLOOM CLUSTER	HANDLOOM WEAVING ON FINE COTTON SAREE AND DRESS MATERIAL AND SALE	1	510
11	TEXTILES & READYMADE GARMENTS	RAJBALHAT HANDLOOM CLUSTER	HANDLOOM WEAVING ON COTTON SAREE AND SALE	1	520
12	TEXTILES & READYMADE GARMENTS	SASTITALA TANTUBAY SAMABAY SAMITY LTD	HANDLOOM WEAVING ON COTTON SAREE AND SALE	1	231
13	TEXTILES & READYMADE GARMENTS	DASPUR HANDLOOM CLUSTER	HANDLOOM WEAVING ON COTTON SAREE AND DHUTI AND SALE	1	509
14	TEXTILES & READYMADE GARMENTS	GHOSHPUR ZARI EMBROIDERY CLUSTER	ZARI AND HAND EMBROIDERY	200	1200
15	OPTICAL LENSE GRINDING	OPTICAL LENSE GRINDING CLUSTER	RUNNING	70	185
16	TEXTILES & READYMADE GARMENTS	CHHUTORPARA TANTUBAY SAMABAY SAMITY LTD	HANDLOOM WEAVING ON COTTON SAREE AND SALE	1	285
17	TEXTILES & READYMADE GARMENTS	BEGAMPUR HANDLOOM CLUSTER	ACTIVE	1	400
18	TEXTILES & READYMADE GARMENTS	BOROKALIMATA HANDLOOM CLUSTER	ACTIVE	1	507
19	TEXTILES & READYMADE GARMENTS	JANGIPARA HANDLOOM CLUSTER	ACTIVE	1	587
20	JUTE & OTHER FIBRE BASED PRODUCTS	JIRAT RAKHI ZORI CLUSTER	MFG OF RAKHI	30	134
21	TEXTILES & READYMADE GARMENTS	DILAKASH ZARI EMBROIDERY CLUSTER	HAND EMBROIDERY	60	340
22	LEATHER & ALLIED PRODUCTS	RISHRA KANAIPUR HAND GLOVES CLUSTER	INDUSTRIAL LEATHER HAND GLOVES	29	110
23	CLAY & CERAMIC	CHANDANNAGAR EARTHEN RING CLUSTER	MFG OF EARTHEN RING	34	161
24	TEXTILES & READYMADE GARMENTS	RISHRA HOSIERY CLUSTER	MFG OF HOISEY GARMENTS	27	300
25	ELECTRICALS	CHANDANNAGAR LED CLUSTER	DECORATIVE LIGHTINGS FOR PUJA PANDALS AND DIFFERENT FESTIVALS	57	1200

A10: DETAILS OF BANKING PROFILES¹⁴

¹⁴*Data taken from PLP report Nabard 2023-24*

ITCHS CODE	ITEM_DESC	SUM OF VALUE (INR)	CATEGORY
73030030	SPUN PIPE	5890337759	Base Metal
28030010	CARBON BLACKS	5768408682	Chemical
63051040	JUTE SACKING BAGS	3338860073	Jute Produce
51071030	WORSTED WEAVING YARN	1887255500	Textile
19053100	SWEET BISCUITS	1711607579	Food processing
73259999	OTHER CAST ARTICLES OF IRON OR STEEL N.E.S	858207576	Iron & Steel Products
27081010	OBTAINED BY BLENDING WITH CREOSOTE OIL OR OTHER COAL TAR DISTILLATES	819405511	Mineral Products
10063010	RICE PARBOILED	805461808	Agriculture
53101013	HESSIAN CLOTH CNTNG 100% BY WT OF JUTE.	785569377	Jute Produce
73251000	OTHR ARTICLES OF NON-MALLEABLE CAST IRON	784046224	Base Metal

A12: FOCUS GROUP DISCUSSION REPORT OF HOGLHY DISTRICT

Post FGD Report				
Section A				
Districts Covered		Date		Duration
Howrah		10.07.2025		3.00 - 6.00 pm
Hooghly				
No. of participants				
Total	40			
Entrepreneurs / Association/Cooperation/Chamber of commerce	21			
Trade Facilitation Institution	2			
	3			
Government Stakeholders	4			
IIFT Team Participant	8			
Dr.K.Rangarajan	Mr. Raktim Mitra	Mr. Kaustav Bhattacharyya		

Ms. Sumana Das	Ms. Tina Majumder			
Section B				
Salient Inputs from the FGD				
Physical Infra Core	Physical Infa Support	Soft Infrastructure	Others	Activities
No. of feeder vessels to be increased				Stand alone activity to be taken up by Kolkata Port to be followed by State Government
	Vessel Charges to be reduced or standardised			Stand alone activity to be taken up by Kolkata Port to be followed by State Government
		Requirement of Handholding		Standalone for SEFC - Morehandholding and reach
Facilities for value addition of flower				to be included in ZEHAP for DPR
Cold stoarge, packaging system and cold transportation facility for horticulture products				to be included in ZEHAP for DPR
Packaging and cold staorage for vegetable				

		Financial help to Wig Cluster		Awareness of Financial schemes by SEFC & Awareness programme by Banks
		Marketing Assistance to Wig Cluster		Marketing expert to be assigned - to be included in ZEHAP
		Raw material bank - Association with net cluster - Karur Cluster, Tamil Nadu		To be included in ZEHAP. Guidance from CH(KR)
	Custom Unit in Postal Division with DNK			To be done by Indian Post will be added in ZEHAP
Display Unit in Zori Hub Cluster				to be included in ZEHAP for DPR
