

# DISTRICT PROFILE

## DAKSHIN DINAJPUR



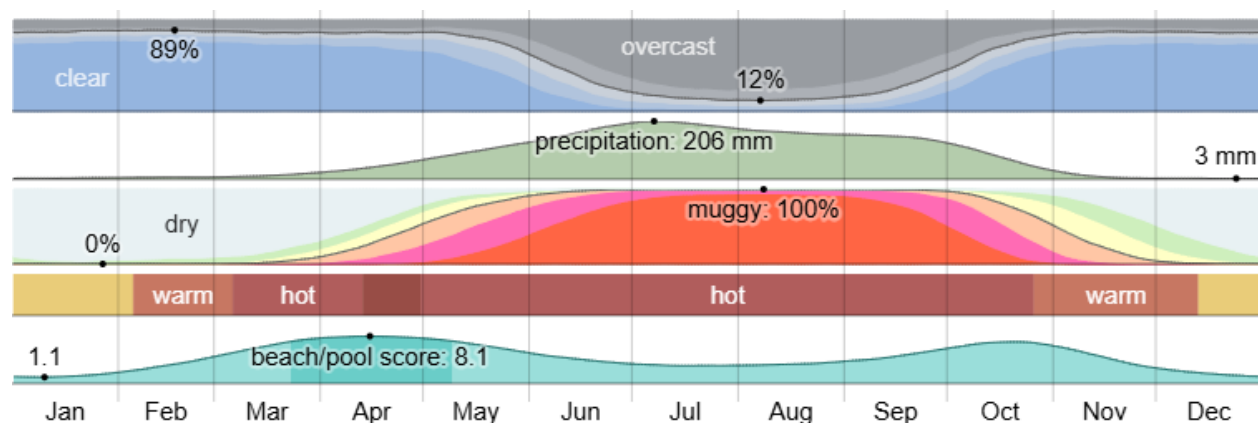
## 1. INTRODUCTION

Dakshin Dinajpur is situated at the northern section of the state of West Bengal. It was carved out of the erstwhile West Dinajpur district in 1992. The district shares its international boundary with Bangladesh on the east. It borders Uttar Dinajpur and Malda districts within the state. The district headquarters is at **Balurghat**, which is also its main urban and commercial hub.

Primarily rural in character, the district's economy is driven by **agriculture**. It also has emerging potential in **cross-border trade** due to its proximity to Bangladesh.

## 2. CLIMATIC CONDITIONS

The mean annual temperature of the district is 25 °C. Late December and early part of January are marked as the coolest period in the district with minimum temperature during winter hovering around 7-11°C. Sometimes the minimum temperature goes down to 4°C. The winter season is the most pleasant period in the year. Day temperature during this period is from 25 - 27 °C. May is the hottest month with temperature sometimes soaring as high as 43°C. Generally the temperature rises from the beginning of March and the day temperature goes up to 40°C in the months of April and May.<sup>1</sup>



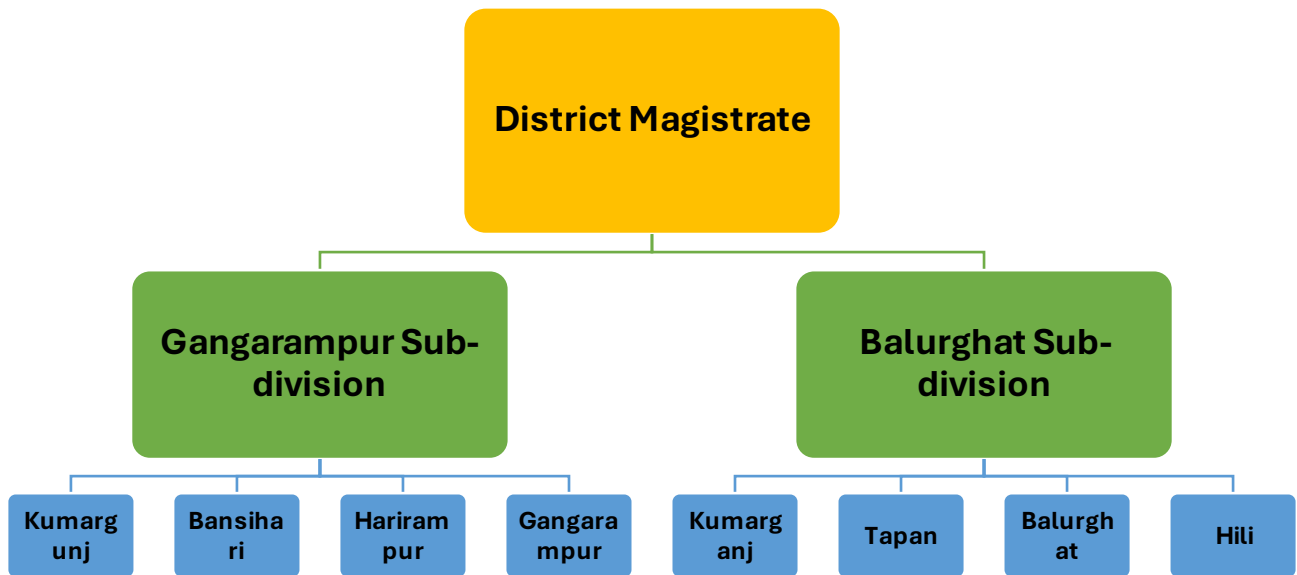
**Fig 1: Climate conditions for Balurghat, City of Dakshin Dinajpur**

Source: Weather Spark

<sup>1</sup> Information taken from [National Aquifer Mapping and Management Plan, 2021](#), by GOI

### 3. ADMINISTRATIVE PROFILE

The administrative order of the district is maintained by the District Magistrate (DM) cum the District Collector. Under the magistrate, there two sub-divisions – Balurghat and Gangarampur and eight blocks, Balurghat, Gangarampur, Tapan, Kumarganj, Harirampur, Kushmandi, Hili and Bansihari. The district has 3 municipalities, Balurghat, Buniadpur and Gangarampur.



**Fig 2: Administrative Order of Dakshin Dinajpur**

The detailed administrative structure is given in Table A1 and A2, in the Annexure section.

### 4. LOCATION AND GEOGRAPHY

The district lies between latitude 26 degree 35'15" N to 25-degree 10'55" N and longitude 89 degree 00'30" E and 87-degree 48'37"E. the area covered by the district is 2162 square km.

The district is flanked by the international border with Bangladesh on the Eastern, Northern and part of Southern boundary and is bounded by Uttar Dinajpur district in the West and Malda district in south.

The rivers of the district are Atrai, Tangon and Jamuna.

## 5. DEMOGRAPHY

As per the Census Data of 2011, the total population of the district is about 16.76 lakh. 14.40 Lakh amongst them are rural i.e., 85.92% and the rest 14.08% is urban. The population density in the district is, 775 people per sq. km.

The sex ration in the population is 956 females per 1000 males. Around 65% of the population are literate. The literacy rate amongst females is 23% less in the rural population compared to the urban one.

**Table 1 : Demographic details of the district (Unit: Lakh People)**

<b>Parameters</b>	<b>Total</b>	<b>Rural</b>	<b>Urban</b>
Number of Households	3.96	3.39	0.57
Total Population (Persons)	16.76	14.40	2.36
Total Population (Males)	8.57	7.38	1.19
Total Population (Females)	8.19	7.02	1.17
Literates (Persons)	10.84	8.91	1.93
Literates (Males)	5.96	4.96	1.01
Literates (Females)	4.87	3.95	0.92
Total Workers (Persons)	7.03	6.14	0.89
Total Workers (Males)	5.00	4.31	0.68
Total Workers (Females)	2.03	1.82	0.21
Agricultural Labourers	2.80	2.77	0.03
Workers in Household Industries	0.32	0.27	0.05

Source: Census 2011

## 6. LOGISTICS INFRASTRUCTURE

Dakshin Dinajpur (district HQ: Balurghat) is a largely rural, border district with a growing road link to the Bangladesh border (Hili), railway connection to the Indian rail network, limited aviation access (nearest major airport far away), local riverine channels (Atrai) that are not part of any major national inland-waterway system, and modest local warehousing/cold-storage capacity.

### *Roadways*

In the Dakshin Dinajpur division, there are total 13 major roadways, amongst which, the Rajganj Kaliaganj Buniadpur Road (20.6 km) is a State Highway.

The other roadways division, the Dakshin Dinajpur Highway division has 37 major roads. The Mirzapur Bansihari Road (10 km) is another state highway.

The national highway 512, starting from its junction with NH-12 near Gajol connecting Daulatpur, Bansihari, Gangarampur, Harsura, Balurghat and terminating at Hilli near Indo/Bangladesh Border.

### *Railways*

The railway network of Dakshin Dinajpur, though limited in extent, plays a crucial role in linking this landlocked border district of northern West Bengal with major commercial and transport corridors of eastern India. The district's rail connectivity is centred around a single broad-gauge branch line, which provides both passenger and limited freight services while offering strong future potential for cross-border trade expansion.

Dakshin Dinajpur is served by the **Eklakhi–Balurghat Branch Line**, which was commissioned in **2004**. This **87-kilometre broad-gauge line** connects **Eklakhi Junction** in Malda district (on the Howrah–New Jalpaiguri main line) to **Balurghat**, the district headquarters. The route passes through several important towns of Dakshin Dinajpur — **Buniadpur, Gangarampur, Malancha**, and finally **Balurghat** — providing vital connectivity for both passengers and local freight movement.<sup>2</sup>

---

<sup>2</sup> [Ministry of Railways](#)

Through the **Eklakhi Junction**, Dakshin Dinajpur is connected to the **Howrah–New Jalpaiguri main line**, one of the busiest and most important railway corridors in eastern India. This linkage enables direct connectivity to:

**Kolkata (Howrah/Sealdah)** — for trade and passenger movement to the state capital and port-based logistics at Haldia.

**Siliguri and New Jalpaiguri (NJP)** — gateway to North Bengal, Sikkim, and the Northeast.

**Bihar and Assam** — via the Katihar–NJP corridor, strengthening inter-state freight distribution.

Thus, even as a branch line, the Eklakhi–Balurghat section forms a crucial **feeder link to India's eastern freight corridor**.

### *Waterways*

The major rivers of the district are, Atrai, Tangon and Jamuna.

At present, Dakshin Dinajpur does *not* have significant water logistics infrastructure. Most river activity is for local needs (irrigation, fishing, local traffic).

### *Airways*

There is no functional airport in Dakshin Dinajpur. The closest airport to Dakshin Dinajpur is Bagdogra, (231.3 km).

### **Bagdogra Airport: Freight & Logistics Infrastructure**

#### ➤ **Basic airport specs (road / airside relevant)**

- Location: Near Siliguri, West Bengal; serves North Bengal and nearby states.
- Runway: Single runway 18/36, length ~2,754 meters (~9,035 ft), concrete / asphalt surface. Suitable for narrow-body aircraft like A320, B737 etc.
- Customs status: It is a *customs airport*. That means import/export procedures are possible, which is essential for international freight.

#### ➤ **Existing freight / cargo / perishable infrastructure**

- **Centre for Perishable Cargo (CPC):** There is a CPC being developed adjacent to Bagdogra by Siliguri-Jalpaiguri Development Authority (SJDA), with APEDA & ASIDE funding. Purpose is to serve fresh fruits, vegetables, flowers etc.
  - Project area: about **3 acres**.
  - Cost: ~ ₹ 6.40 crore (~ Rs 6,40,10,000) for the initial CPC, with some funds for approach road etc.
  - Management: The facility will be handed to AAI/AAICLAS for operation & maintenance, which is helpful for integrating with airport operations.
- **Cargo storage / cold storage facility:** A perishable cargo storage facility, adjacent to Bagdogra Airport, was built back in ~2010 by SJDA on ~3.91 acres (≈ 1.58 hectares) at cost ~ Rs 6.68 crore.
  - However: It was not operational initially due to missing permissions / licenses; cooling / AC systems became defunct for some period.
  - Recent developments: AAI has agreed to take over its maintenance for 20 years; it is planned to be operationalised.
- **Auction / perishables market / linkage centre:** A perishable cargo complex / auction centre for local produce (pineapples etc.) was announced / planned by SJDA near Bagdogra, to help better price discovery etc.
- **Cargo tonnage / throughput:** In recent data (April 2024 – March 2025), Bagdogra handled ~ **8,952 tonnes** of cargo. Planned/upcoming expansions that affect logistics.<sup>3</sup>

## 7. EXPORT INFRASTRUCTURE

In Dakshin Dinajpur, the export infrastructure is primarily centered around the **Hili land port**, a key border crossing that facilitates road trade with Bangladesh. While the district has potential in agro-based exports, the infrastructure is limited compared to major port cities in West Bengal and faces several challenges.

---

<sup>3</sup> [MilleniumPost](#); [Indian Infrastructure](#)

## **Hili International Check Post and Land Port**

Land Port Hili is located along the international border between India and Bangladesh, in Dakshin Dinajpur.

The major commodities exported via LCS Hili are onion, wheat, M.O. cake, N.B. rice and maize. The major commodities imported are P. cerates, S.C. molasses, C.R.B. oil, non-edible sugarcane molasses.

Land Port Hili is located in close proximity of National Highway (NH)- 512 which is approx. 4 kms away. While the nearest railway station is located at Balurghat, a new railway line is also proposed to connect the station to Hili.

The status as of September 2021 is that LPAI has prepared the Detailed Project Report and has identified 80 acres of land for development of the Land Port. The State Government of West Bengal has been requested for initiating the process of Land Acquisition.<sup>4</sup>

### ***Cold storage facility in the district***

As an agriculturally dependent district, Dakshin Dinajpur relies on cold storage facilities to manage a high volume of perishable goods, especially potatoes. The district has both private and cooperative cold storage facilities, with the number and capacity supplemented by nearby facilities in Malda and Uttar Dinajpur. Though no data has sufficed the existence of government registered cold storages in the district, there are few private cold storages. The secondary data collection from Commercial Estate E-market place indicates numerous privately run cold storage facilities operating within and around Dakshin Dinajpur. These include:

- **Iswar Himghar Private Limited:** This storage in the Rampur area explicitly mentions storing potatoes.
- **SKUS Cold Store:** Located in Kadimabad, this facility offers various cold storage services for different products.

---

<sup>4</sup> PWD Highways and LPAI

Benfed (The West Bengal State Cooperative Marketing Federation Ltd.) has a branch office in Dakshin Dinajpur and provides crucial support to the district's agricultural sector through procurement, storage, and distribution services.

### **Gangarampur branch office**

- **Location:** The Benfed office in Dakshin Dinajpur is located at Kaldighi in the Gangarampur block.
- **Services:** From this location, Benfed facilitates a range of services for local farmers, including the operation of a cold storage facility for agricultural products<sup>5</sup>.

### ***Warehouse facility in the district***

Dakshin Dinajpur's warehouse infrastructure includes facilities operated by the West Bengal State Warehousing Corporation (WBSWC), private players, and agricultural cooperatives like Benfed. A significant portion of these storage facilities is dedicated to agricultural products like rice and potatoes.

There are three government registered warehouses specifically for Rice under West Bengal state warehousing corporations developed under RIDF Scheme of 15000 MT capacity. Also state government has rented six more private godowns of total capacity of 28997 MT. (Refer Table A3 in the Annexure)<sup>6</sup>

There are few private warehouses in the district.

## **8. AGRICULTURAL PROFILE**

There is about 1830 Ha. of land under miscellaneous tree crops in Dakshin Dinajpur and the net sown area is 1,75,620 Ha., according to the Potential Linked Credit Plan, 2024-25, by NABARD.

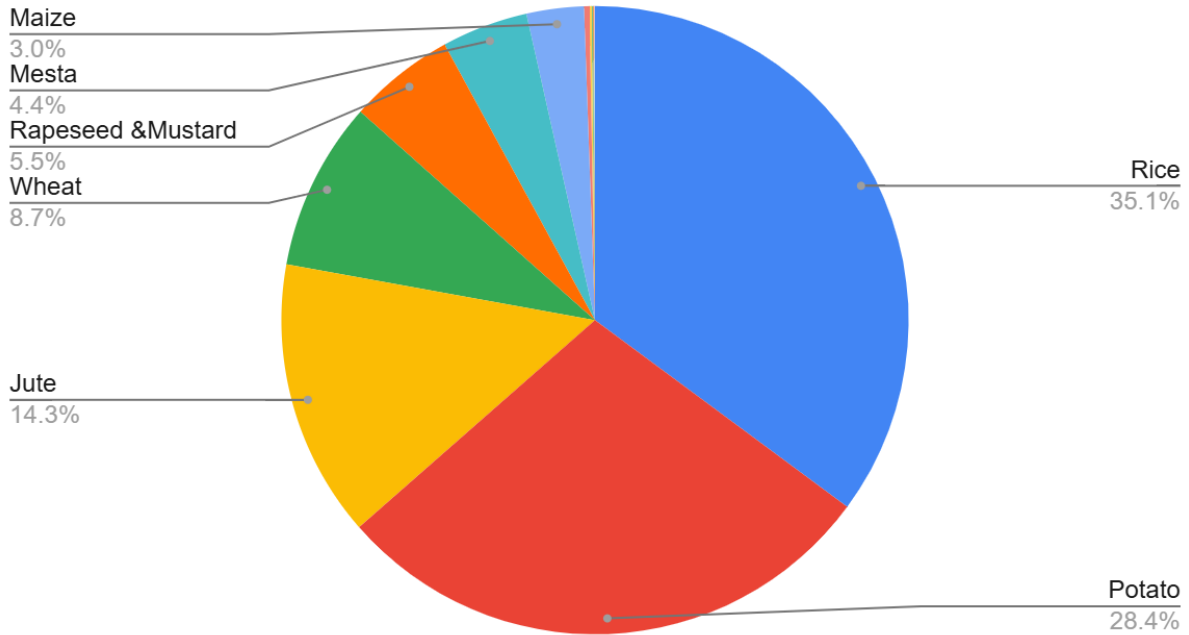
---

<sup>5</sup> Data compiled from West Bengal State Cooperative Marketing Federation Ltd

<sup>6</sup> Data compiled from West Bengal State Warehousing Corporation and West Bengal Regulatory Development Authority

The major crops are, Rice Potato, Jute, Wheat etc. Rice amongst these contribute about 35% to the total production basket for crops of the district. Potato also takes another major share of 28.4%. Rice dominates the crops even for area, having the largest area (54%) cultivated.

### Production (Tonnes)



**Fig 3: Composition of Crop's Production**

The details of these crops can be found in Table A4, in the Annexure section.

### ***Horticulture***

Horticulture in Dakshin Dinajpur adds color and vitality to the district's landscape, reflecting its rich agricultural tradition. Lush orchards and vegetable fields shape the livelihood and rhythm of rural life here.

### **Flowers:**

The major flowers, produced in the district are, Rose, Gladiolus, Tuberose and Marigold. Tuberose has the production of 0.760 Cr. Sticks. Marigold is measured in Thousand MT and covers an area of 0.038 thousand Ha.

**Table 2: Major Flower Production for Dakshin Dinajpur**

Name	Area in (Thousand ha)	Production in Crore Sticks (2023-24)	Unit
Rose	0.014	0.535	In Cr. Sticks
Gladiolus	0.015	0.304	In Cr. Sticks
Tuberose	0.019	0.760	In Cr. Sticks
Marigold	0.038	0.190	Thousand MT

Source: "Report from the Directorate of Horticulture Dept. of FPI & H, Govt. of W.B."

### **Fruits:**

Mango is the most produced fruit of the district with a share of about 30%. Banana also takes a major share of 27%. Other important fruits of the district are Litchi, Jackfruit, Guava etc.

**Table 3: Major Fruit Production for Dakshin Dinajpur**

Name	Area in (Thousand ha)	Production in Crore Sticks (2023-24)	Unit
Mango	3.824	40.205	Thousand MT
Banana	2.953	36.154	
Litchi	1.344	9.385	
Jackfruit	1.444	6.665	
Guava	1.458	6.340	
All fruits	16.019	132.640	

Source: "Report from the Directorate of Horticulture Dept. of FPI & H, Govt. of W.B."

### **Vegetable:**

Brinjal is the most produced vegetable of the district, having a share of 20% amongst total vegetable production of Dakshin Dinajpur. Cabbage comes second, with not much of a difference, having a contribution of 20%. The other important vegetables are Cauliflower, Green Chili and Tomato, together contributing about 34%

**Table 4: Major Vegetable Production for Dakshin Dinajpur**

<i>Name</i>	<i>Area in (Thousand ha)</i>	<i>Production (2023-24)</i>	<i>Unit</i>
Brinjal	6.679	107.474	Thousand MT
Cabbage	4.282	107.041	
Cauliflower	2.953	59.066	
Green Chili	4.275	42.332	
Tomato	1.91	34.448	
Total Vegetables	43.621	536.606	

Source: "Report from the Directorate of Horticulture Dept. of FPI & H, Govt. of W.B."

### **National Agricultural Mandi**

<b>District</b>	<b>Name</b>	<b>Major Commodities Trading</b>
Dakshin Dinajpur	Gangarampur krishak bazar	Brinjal, Cabbage, Carrot, Cauliflower, Chilli, Cluster Beans, Coriander, Cucumber, Drumstick, Garlic, Ginger, Green Chilli, Jack Fruit, Ladies Finger, Onion, Papaya, Potato, Raddish, Ridge Gourd, Spinach, Anumulu, Sweet Potato, Tomato, Squash

Source: [E-NAM Markets](#)

The NAM statistics shows that, the vegetables majorly produced in the district such as Brinjal, Cabbage, Cauliflower, Tomato, Chili etc. are being endorsed and traded in the NAM facilities.

## **9. INDUSTRIAL PROFILE**

Dakshin Dinajpur's industrial profile is predominantly agro-based, with a limited presence of heavy industries. The district's economy relies on micro, small, and medium enterprises (MSMEs), especially in the handloom and agro-processing sectors. The District Industries Centre (DIC) coordinates government efforts to promote industrial development.

### **Key industries**

- **Agro-based industries**

- **Rice milling:** As a rice-producing region, Dakshin Dinajpur has numerous rice mills, including entities like [Shree Bajrangbali Agro Industries Pvt Ltd](#)
- **Food processing:** The district has food processing units such as A K Food Industry in Patiram. The potential for further agro-industrial development is high, supported by credit flow schemes from institutions like NABARD.

➤ **Cottage and handloom industries**

- **Handloom weaving:** The handloom industry is a significant cottage industry in the district, particularly known in the Gangarampur block. Weavers produce a variety of handloom products, with the traditional "Tant" saree being particularly well-known.
- **MSME clusters:** The West Bengal government promotes cluster development for MSMEs, including handloom, to boost production and provide employment. There are three MSME clusters for Handloom which mainly manufactures Cotton, Tangail & Jamdani Saree employing around 1200 artisans. (Refer Table A5 in the Annexure)<sup>7</sup>

## 10.BANKING PROFILE

Banking Sector of Dakshin Dinajpur District is providing banking facilities through a network of 17 Commercial Banks with 101 bank branches, 29 branches of Bangiya Gramin Vikash Bank (BGVB), 9 branches of Dakshin Dinajpur District Central Cooperative Bank Ltd (DDCCB), 3 branches of Raiganj CCB Ltd and 3 branches of Dakshin Dinajpur District ARDB. There are 84 working Primary Agricultural Credit Societies (PACS) affiliated to DDDCCB and 48 Primary Agricultural Credit Societies (PACS) affiliated to RCCB. The total deposits of all banks in the district stood at ₹ 534118 lakh as on 31 March 2023 compared to ₹ 499190 lakh as on 31 March 2022. The Deposits registered a growth of 7% in 2022-23 compared to the previous year. The total loans outstanding of all banks was ₹ 332372 lakh as on 31 March 2023 compared to ₹ 308730 lakh as on 31 March 2022. The loans outstanding registered a growth of 7.65 % during 2022-23. During

---

<sup>777777</sup> Data compiled from Directorate of Textiles

2022-23, Credit Deposit Ratio was 62.23 % which is slightly higher than last year's 61.85 %. Thus CD ratio is above the RBI stipulated standard of 60%.

The **Lead Bank** is **Punjab National Bank**.

## 11. ODOP SECTOR

The district of Dakshin Dinajpur has two ODOP sectors,

### Wooden Mask & Wall Hanging

The wooden masks of Dakshin Dinajpur are typically made from soft, locally available woods such as gamar (silk cotton tree), neem, or mango wood, which are easy to carve and durable for performances and rituals.

### Bamboo Craft

Standard bamboo craft items made in Dakshin Dinajpur include baskets, mats, hand fans, containers, furniture, fishing traps, and decorative home articles.

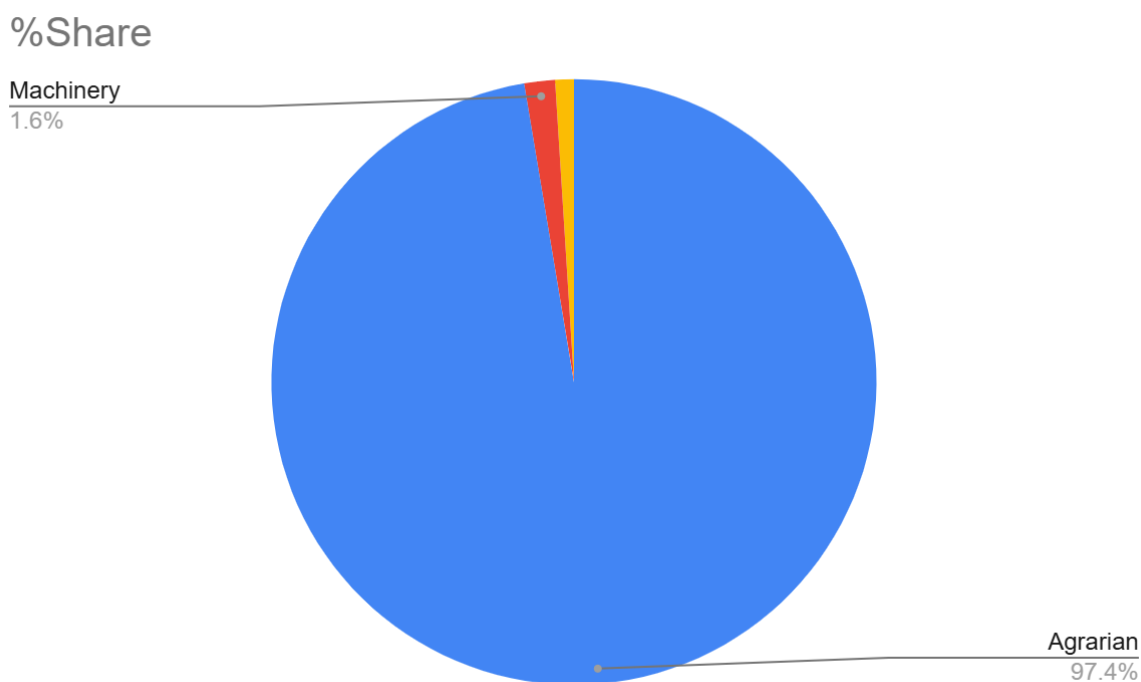
Amongst these, the Wooden Mask has been **GI tagged** as well. Along with the wooden mask Tulaipanjhi Rice cultivated here has GI product.

## 12. EXPORT PROFILE

Dakshin Dinajpur exports Parboiled Rice (10063010) the most, about 2.74 billion Rupees. This product takes about 65.2% of the district's export basket. The Bran Sharps of Wheat (23023000) are second with export volume of Rs. 0.68 billion. The Bran sharps contributed about 16.2%. The other major product is semi-milled or wholly milled Rice (excl basmati rice) (10063090). It makes

up about 8.4% of the export volume of the district with the value of Rs. 0.36 billion. The rest of the products together take up to about 10%. (Refer Table A6 in the Annexure)

It can be observed from the below figure that about 97.4% of the whole share of exports is dominated by agrarian products. Infact, Table A6 shows, 8 out of 10 products exported from the district are agrarian in nature. The other two products are from Machinery Industry and Food processing industry, possessing negligible contribution to the district's export basket.



**Fig 4; Sectorial share of exports for Dakshin Dinajpur**

### **Product Market Analysis**

The Indian exports of **Semi-milled Rice (10063010)** has grown 114.43% in the period of 2020-2024. Along with the expanding supply market, as given by the aforementioned rate of growth, the global demand for the same has grown by 30.74%. India is the top producer of the good, worldwide.

The **Shelled Leguminous Vegetables (07139090)** increased 442.79%, in its exports from India, in the concerned period. The global demand in the market has also risen by 58.13%, that ensures future potential of an expanding market. India is the second ranked exporter, worldwide.

The **Shelled Chickpeas (07132020)** has grown by 97.64% in Indian exports and the global demand for the same has grown by 94.08%, ensuring future prospect of an expanding market by both supply and demand sides. India, infact, is the top importer in this market, along with being the fourth ranked exporter, considered globally.

The Indian exports of **Shelled Beans of species "Vigna mungo [L.] Hepper or Vigna radiata [L.] Wilczek" (07133110)** have grown by 331.07% and the global demand has grown by 77.44%. India itself is the top importer in the global market and the fourth ranked exported as well. **Onions (07031019)** has lost its export in the global market by 15.37% while the demand for the same keeps growing by a 29.95% in the same period. India is the fourth exporter in the world for the good. **Bran Sharps (23023000)** has shown phenomenal growth in the Indian exports; by 20,179.19%. This huge growth is supported by the expansion in global demand (48.20%). India is the third exporter of the good. The **Semi-milled Rice given by 10063090** has decreased Indian exports (13.84%), although the global import demand has risen by 47.17%. India also happens to be the top exporter for the good in the world. For **Maize Seeds (10051000)** India is ranked 21 in the global exporter's list. The top importing markets such as Malaysia, Germany, France etc. may be potential target markets to enhance India's relative position in the global market. The Indian exports as well as the global imports of the same have grown in low rate. The **Agricultural, horticultural or forestry machinery for soil preparation or cultivation given by 84328020** has recorded low rates of growth for both the Indian exports (33.65%) and the global imports (13.29%). India is ranked seventh in the global exporter's list. Except for USA, which is already exported to by India, other top importing markets such as France, Poland, Germany etc. may also be targeted for better expansion of the Indian supply of the good. The market for **Oilcake (23069012)** has contracted. The Indian exports have decreases by 49.66% while the International demand for the has also decreased by 20.35%. India itself is one of the top importers; and the second most exporting country for the good. The details of all these goods are given in the table below.

**Table 5 : Export Prospects of the District (Unit: Ten Million USDs)**

HS Code	Product Details	Exported value in 2020	Exported value in 2021	Exported value in 2022	Exported value in 2023	Exported value in 2024	Export growth of India in five years (in %)	World Import Growth of the sector @ 6 digit in five years (in %)	Top five importers of India	Top ten importer of the sector @ 6 digit in world market	India's rank in world exporter list of the sector
1006 3010	Semi-milled or wholly milled rice, whether or not polished or glazed: Rice parboiled	180.78	296.52	276.97	315.12	387.65	114.43	30.74	Benin,Guinea, Côte d'Ivoire, Togo,Somalia	Malaysia,Germany, Indonesia, France, Mexico, United Kingdom, United States of America, Canada, Italy, Netherlands	1
0713 9090	Dried, shelled leguminous vegetables, whether or not skinned or split (excluding peas, chickpeas, beans, lentils, broad beans, horse beans and pigeon peas): Other of hdg. 071390	0.51	0.50	1.16	2.20	2.77	442.79	58.13	Bangladesh, Viet Nam, United States of America, Canada, United Arab Emirates	China, Pakistan, United States of America, Saudi Arabia,Bangladesh, Canada, Malaysia, Netherlands,Kuwait, United Arab Emirates	2
0713 2020	Dried, shelled chickpeas "garbanzos", whether or not skinned or split: Bengal gram (desi chana)	4.13	3.73	6.60	9.04	8.16	97.64	94.08	Bangladesh, Iran, UAE, USA, UK	Pakistan, Türkiye, Bangladesh, Algeria, United Arab Emirates, Saudi Arabia, Iraq, United States of America, Spain	4
0713 3110	Dried, shelled beans of species "Vigna mungo [L.] Hepper or Vigna radiata [L.] Wilczek", whether or not skinned or split: Beans of the spp vigna mungo (l.) hepper	1.74	4.86	3.19	6.19	7.48	331.07	77.44	Bangladesh, United States of America, United Arab Emirates, Canada, United Kingdom	China, Viet Nam, Indonesia, Japan, United States of America, United Arab Emirates, Thailand,Dominican Republic,Philippines	4

0703 1019	Fresh or chilled onions and shallots: Other onions fresh or chilled	0.00	0.00	0.00	43.02	36.40	-15.37	29.95	Bangladesh, United Arab Emirates, Sri Lanka, Malaysia, Kuwait	United States of America, United Kingdom, Malaysia, Canada, Germany, Netherlands, Bangladesh, Viet Nam, United Arab Emirates, Sri Lanka	4
2302 3000	Bran, sharps and other residues of wheat, whether or not in the form of pellets, derived from sifting, milling or other working	0.04	3.99	14.63	20.37	8.96	20179.19	48.20	Bangladesh, Nepal, Australia, USA	Türkiye, China, Viet Nam, Bangladesh, Netherlands, Ireland, Germany, Morocco, Oman, Saudi Arabia	3
1006 3090	Semi-milled or wholly milled rice, whether or not polished or glazed: Rice except parboiled (excl basmati rice)	133.36	197.19	212.37	135.07	114.90	-13.84	47.17	Cameroon, Viet Nam, Malaysia, Kenya, Guinea	Indonesia, Philippines, Saudi Arabia, Iraq, United States of America, Malaysia, Côte d'Ivoire, Iran, United Arab Emirates, Benin	1
1005 1000	Maize seed for sowing	3.79	5.97	5.08	5.65	4.07	7.19	24.32	Bangladesh, Nepal, Thailand, Viet Nam, Côte d'Ivoire	Malaysia Germany, France Poland Austria Canada Hungary Italy Romania United States of America	21
8432 8020	Agricultural, horticultural or forestry machinery for soil preparation or cultivation	3.41	6.23	5.51	3.34	4.56	33.65	13.29	USA, Bangladesh, Nepal, Sri Lanka, Türkiye	United States of America, France, Poland, Germany, Canada, United Kingdom, Australia, Austria, Romania, Italy	7
2306 9012	Oilcake and other solid residues, whether or not ground or in the form of pellets, resulting from the extraction of vegetable fats or oils Oil-cake and oil-cake meal of mustard seeds expeller variety	4.82	2.10	1.96	3.27	2.42	-49.66	-20.35	Bangladesh, Nepal, Bhutan, Italy, USA	Malaysia, Korea, Bangladesh, France, China, Japan, United States of America, Cambodia, Viet Nam	2

Source: Trademap

### 13.SWOT ANALYSIS

Studying and examining the different aspects of the district and collecting data from the primary and secondary sources and the focus group discussions conducted in the district, the SWOT Analysis of the district in terms of export development has been depicted below:

<p><b>STRENGTHS</b></p> <ul style="list-style-type: none"> <li>• Vast Availability of Natural Resources</li> <li>• Well connected by Road and Railway</li> <li>• Existence of organized clusters in textiles</li> <li>• Massive Production of Agricultural and Horticultural products suitable for exports</li> <li>• Access to Hili Land Port (LCS)</li> </ul>	<p><b>WEAKNESSES</b></p> <ul style="list-style-type: none"> <li>• Lack of export infrastructure and effective employment in the clusters</li> <li>• Lack of Export Facilitation and International Marketing Assistance</li> <li>• The land port has many infrastructural issues including availability of broad roads and truck layover facilities.</li> <li>• Lack of support for R&amp;D, Quality Certifications</li> <li>• Lack of Warehouse &amp; cold storage infrastructure</li> <li>• Lack of Industrial Estates/Parks</li> </ul>
<p><b>OPPORTUNITIES</b></p> <ul style="list-style-type: none"> <li>• Growing International market for Bran Sharps and agro products</li> <li>• E-commerce exports are gaining momentum</li> <li>• Supportive schemes of both the Central and State Governments for exports</li> </ul>	<p><b>THREATS</b></p> <ul style="list-style-type: none"> <li>• Stricter environmental and food safety requirements in international markets.</li> <li>• Lack of facilities in the clusters leading to migration of value addition to other districts/states</li> <li>• Emergence of ESG requirements and other non-tariff barriers in international markets</li> </ul>

### 14.EXPORT CHALLENGES OF THE DISTRICT

Dakshin Dinajpur district is pre-dominantly agriculture dependent district of West Bengal producing rice, potato and jute. The major contributions for exports from the district is accounted

by agricultural products (97.4%), followed by miniscule exports of agricultural machinery (1.6%). The exports are majorly carried out by traders. Though Mili LCS is in this district to connect to Bangladesh boarder export, the facilities in the LCS are far from acceptable levels. The major export challenge for the district is entrepreneurship for exports by the farmers and FPOs. Moreover, the FPOs has opportunities to explore value added agricultural products from the rice bran. The wooden products and bamboo craft of the district have good export potential.

### **Infrastructure and logistics**

- Warehouse and cold storage facilities: The district uses majorly private warehouses for paddy and rice and lacks cold storage facilities for potato and other agricultural products.
- The district has three handloom clusters which are mainly for textile products like Tangail saree, scarfs and cotton shirting.
- The LCS at Mili has shown a mixed performance and suffers from lot of infrastructural issues including narrow roads, storage facilities etc.

### **Market access and finance**

- Difficulty reaching export markets: Farmers and FPOs, particularly in other vegetable products face difficulties in accessing international markets due to lack of awareness which not only denies direct export but also fetches low price. The rice export from the district is carried out majorly by traders.
- Limited access to formal credit: Financing challenges, due seasonality of production and cropping patterns are significant barriers for many small farmers and FPOs. Most of the farmers avail trade and supplies credit as provided by the buyers and moneylenders.
- Weak export strategy: Though government initiatives exist to boost exports, there are gaps in the district-level execution of a robust strategy for products with high export potential mainly for product diversification.
- The SEFC should make specific interventions to implement the district level initiatives.

### **Operational and Environmental challenges**

- Climate change impacts: As the district is predominantly agriculture based it faces high risk arising out of climate change and lowering of the water table.
- Irregular rainfall, frequent floods, and climate changes significant risks to both agriculture and horticulture sectors. Unpredictable weather directly disrupts crop yields.
- The support system and operational processes of the wood craft, bamboo craft and handlooms are weak and require proper support.

## 15. GIST OF THE ANALYSIS

The following are the salient points which emerge from the above discussions:

- The major export of the district is contributed by agricultural products which accounts for around 98% of the total exports as reported in the year 2024-25, followed by 1.6 % of agricultural machinery. Though the district hosts handloom clusters for sarees and shirting their export contribution is negligible.
- Opportunities for value added exports of rice and paddy based products are high.
- The district has limited warehouse facilities majorly for rice and no cold storage facilities for potato and other agricultural products.
- Several units located in the handloom clusters are majorly acting as feeder units for traders from or outside the district.

## 16. EXPORT ACTION PLAN SUGGESTED

Based on the above facts, analysis of the data and the input from the stakeholders, the following action plan is suggested. The action plan also indicates the desired output of the strategic actions, the responsible agency and the proposed intervention/tool for implementation. It has also been highlighted the activity/activities where a DPR may be required.

Category	Strategic Action	Output Desired	Suggested Agency	Instrument/Intervention

	Revamping the Handloom clusters and units.	Boosting direct exports of Artisans and weavers	MSME&T, WB	MSME&T, WB may organise special programmes for the handloom sector towards the direct opportunities for exports in association with EEPC, FIEO and SEFC.
	Operational issues at Mili LCS	Increased and smooth flow of border trade. utilization of Industrial Parks for exports	State Govt and GOI	The road infrastructure including broadening and providing for truck layovers needs to be taken up immediately. Currently the cost of doing business through the LCS is high due to delays and poor turnarounds etc. The State Govt may intervene with the concerned government agencies including MHA, BRO etc for the smooth flow of goods through the LCS.
	Foreign Post office facility in for E com Exports	Ease of E-Com exports through Dak Niryat Kendra	Postal Dept. + Customs	Mobile foreign post office visiting the district on designated days
	Strengthening the processes of Warehouse and formation of Cold Storage facilities in the district for vegetables.	Utilization by other agricultural producers with value added services for testing, packing	State Govt	The Warehouses may provide licensed or franchised testing and cold storage services to the other suitable products. They may also utilise packaging services through empanelled vendors.

		and packaging etc		
	Handholding for direct exports of MSMEs	Increased direct exports from the state	State Govt + GoI	Use acceleration services by institutions like IIFT under suitable schemes. The State Govt. may also launch export incubation fund for supporting the Direct Exports.
	Product and district specific capacity building on exports of MSMEs	Direct exports from MSMEs to diverse markets	State Government	The existing SEFC should undertake time bound product and district specific capacity building of MSMEs in Engineering products.

## 17.ANNEXURE

**TABLE A1: DETAILS OF THE ADDITIONAL DISTRICT MAGISTRATES**

Name	Designation	Contact No. (Office/ Residence)
SHRI VIVEK KUMAR, IAS	A.D.M. (Gen.)	03522-255248
DR. HAARIS RASHEED, IAS	A.D.M.(L.R.)	03522-255314
SHRI NAVEEN KUMAR CHANDRA, IAS	A.D.M. (Zilla Parishad)	03522-255506

Name	Designation	Contact No. (Office/ Residence)
SHRI SUVAJIT MANDAL, WBCS(EXE)	A.D.M. (Development)	03522-255203

**TABLE A2: SUBDIVISION & BLOCKS**

SL No.	SUBDIVISION NAME	AREA	POPULATION (As per 2011 Census)
1.	Balurghat	1,202.88 km <sup>2</sup>	905,540
2.	Gangarampur at Buniadpur	1,047.90 km <sup>2</sup>	770,736

**BLOCKS**

SL No.	BLOCK NAME	AREA	POPULATION (As per 2011 Census)
1.	Balurghat	363.9 km <sup>2</sup>	2.51 lakhs
2.	Gangarampur	315.6 km <sup>2</sup>	2.38 lakhs
3.	Tapan	441.1 km <sup>2</sup>	2.51 lakhs

SL No.	BLOCK NAME	AREA	POPULATION (As per 2011 Census)
4.	Kumarganj	286.9 km <sup>2</sup>	1.69 lakhs
5.	Harirampur	214.9 km <sup>2</sup>	1.37 lakhs
6.	Kushmandi	310.5 km <sup>2</sup>	1.99 lakhs
7.	Hili	88.1 km <sup>2</sup>	83,754
8.	Banshihari	197.5 km <sup>2</sup>	1.41 lakhs

**TABLE A 3: WAREHOUSE IN THE DISTRICT**

Sr. No	Name & Details	Capacity (MT)	Remarks
1	RIDF Govt. Food Godown Kumarganj, PO-Mayurpur, P.S. – Kumarganj, Dist. – Dakshin Dinajpur , Pin – 733141	5000	Registered under WBSWC under RIDF Scheme for Rice only
2	RIDF Govt. Food Godown, Balurghat, Hazipur, Airport Road, PO – Beltala Park , Pin – 733103	5000	
3	RIDF Govt. Food Godown, Tapan, near Krishak bazaar, vill – Salash, kardah Road (near Tapan Hospital) PO + PS – Tapan, Dist. Dakshin Dinajpur, PIN – 733127	5000	
4	Gangarampur Agriculture, Vill. & Mouza – Raghunathbati, Ratanmala, PO-Kaldighi PS & Sub Divn. Gangarampur, Dist. Dakshin Dinajpur	4082	Rented private godown by WBSWC
5	Tulsi Das RS Rural Godown & Weighbridge Unit-I & II, Plot no. 6,9,10,11,12,13,14 Khatian No. 384, Mouza-Nazirpur and at Plot no. 315,316,343,344, Khatian No. 326, Mouza- Raghunathpur	3510	

6	Jailokenath Oil Extraction Pvt. Ltd Unit-I,II,III & IV, Plot no. 24,31,46,47,45,41,43,44,37, Khatian No. 922, Mouza-Jotmalkhan	12400	Rented private godown by WBSWC
7	Roy Commercial Unit-I, Plot no. 1149, Khatian No. 925, Mouza-Ratanmala	1600	
8	Roy Commercial Unit-II, Plot no. 1149,1150, Khatian No. 925, Mouza-Ratanmala	1800	
9	Sri Probhat Mustafi, Vill.+P.O.+P.S.- Kushmandi, Mouza –Kushmandi, Khatian No.-2010, Plot No. – 330	2250	
10	WBCONFED (Chamber No.-I & II), Mouza – Gochiar, J.L. No.-103, Khatian No.- 895,896,897 & 898, Plot No.- 119,255, 256,260,262,264, 276,278,283 & 284	3355	

**TABLE A4 : CROP WISE STATISTICAL DETAILS OF DAKSHIN DINAJPUR**

Sl. No.	Crop	Area (Hectare)	Production (Tonnes)	Yield (Ton./Ha.)
1	Rice	216057	686046	3.18
2	Potato	21153	555112	26.24
3	Jute	18608	279239	15.01
4	Wheat	48347	169893	3.51
5	Rapeseed & Mustard	71877	107181	1.49
6	Mesta	6623	86848	13.11
7	Maize	4621	57692	12.48
8	Masoor	6288	5310	0.84
9	Khesari	2116	2170	1.03
10	Sugarcane	18	1494	83
11	Peas & beans (Pulses)	446	453	1.02
12	Urad	901	441	0.49
13	Moong(Green Gram)	235	389	1.66
14	Gram	267	308	1.15
15	Groundnut	113	157	1.39
16	Arhar/Tur	47	99	2.11
17	Sesamum	119	94	0.79
18	Linseed	56	23	0.41

Source: Directorate of economics and Statistics

**TABLE A 5: LIST OF MSME CLUSTERS IN THE DISTRICT**

Sr. No.	Cluster Sector	Name of Cluster	Activity of Cluster	No. of Unit/Weaver/ Artisan
1	Textiles & Readymade Garments	Bordangi Handloom Cluster	Tangail Saree, Jamdani Saree, Tasar Silk Saree And Cotton Scarf	588
2	Textiles & Readymade Garments	Thangapara Handloom Cluster	80 X 80 Gangarampuri Saree Cotton Shirting And Cotton Scarf	438
3	Textiles & Readymade Garments	Gangarampur Handloom Cluster	80 X 80 Gangarampuri Saree, Cotton Scarf And Cotton Shirting	251

Source: [Directorate of MSME, Govt. of West Bengal](#)

**TABLE A6 : EXPORTED ITEMS FROM DAKSHI DINAJPUR IN 2024-25**

ITCHS Code	Item_Desc	Sum of Value (INR Billion)
10063010	Rice Parboiled	2.74
23023000	Bran Sharps And Othr Residues Of Wheat	0.68
10063090	Rice Exceptg Parboiled (Excl Basmati Rice)	0.36
07031019	Other Onions Fresh Or Chilled	0.10
10051000	Maize Seed	0.08
84328020	Rotary Tiller	0.07
07133110	Beans Of The Spp Vigna Mungo (L.) Hepper	0.06
23069012	Oil-Cake And Oil-Cake Meal Of Mustard Seeds Expeller Variety	0.04
07132020	Bengal Gram (Desi Chana)	0.04
07139090	Other Of Hdg. 071390	0.04

Source: [Ministry of Commerce and Industry](#)

**TABLE A7: FGD REMARKS**

Post FGD Report				
Section A				
Districts Covered		Date		Duration
Malda		13.08.25		1.00 to 4.30 PM
Dakshin Dimnajpur				
No. of participants				

<b>Total</b>	50				
<b>Entrepreneurs / Association/Cooperation/Chamber of commerce</b>	33				
<b>Trade Facilitation Institution</b>	4				
	3				
<b>Government Stakeholders</b>	8				
<b>IIFT Team Participant</b>	2				
Mr. Raktim Mitra	Mr. Kaustav Bhattacharyya				

### Section B

#### Products

Natural Honey	Makhana	Carpet - Silk & Jute Blended	Mango	Food Processing (Sauce)	Pottery Items
Maize Seed	Molases	Glucose	Ethanol	RMG (Men)	RMG (Women)

#### Salient Inputs from the FGD

Products	Physical Infra Core	Physical Support	Infra	Soft Infrastructure	Others	Activities
Natural Honey	Warehouse is required	Upto date Honey Processing Machine is required for increasing production capacity. Packaging Unit is required.		Marketing Assistance is required for other destination countries. Knowledge about various schemes & Handholding is required.	Certification Agency / Testing Lab facility is required nearby	
Makhana		Latest Machinery is required for increasing production capacity. Packaging Unit is required.		Marketing Assistance is required for other destination countries. Knowledge about various schemes & Handholding is required.		

Carpet (Silk & Jute Blended)		Packaging Centre required.	is	Marketing Assistance is required. Export Awareness & Handholding is required. Knowledge about finishing of the product like dyeing, cutting is required.	Related Testing Centres are required	
Mango (Raw & Byproducts)	Infrastructure like Plant & Machineries to Warehousing required	Packaging Centre required.	is	Marketing Assistance is required. Handholding for Export is required. Financial aid is required.	Related Testing Centres are required	
Horticulture Products	Cold Storage Chain & Warehousing Facility is required	Packaging Centre required.	is	Research Knowledge on latest agricultural techniques for bulk production is required. Export Handholding & Marketing is required.	Related Testing Centres are required	
RMG (Mens & Womens)		Packaging Centre required for more attractiveness.	is	Marketing Assistance is required. Export Awareness & Handholding is required. Knowledge about Various schemes for loans & subsidies is required.		
Handicraft Items		Packaging Centre required for more attractiveness & durability.	is	Marketing Assistance is required. Export Awareness & Handholding is required.		

			Knowledge about Various schemes for loans & subsidies is required.		
--	--	--	--	--	--